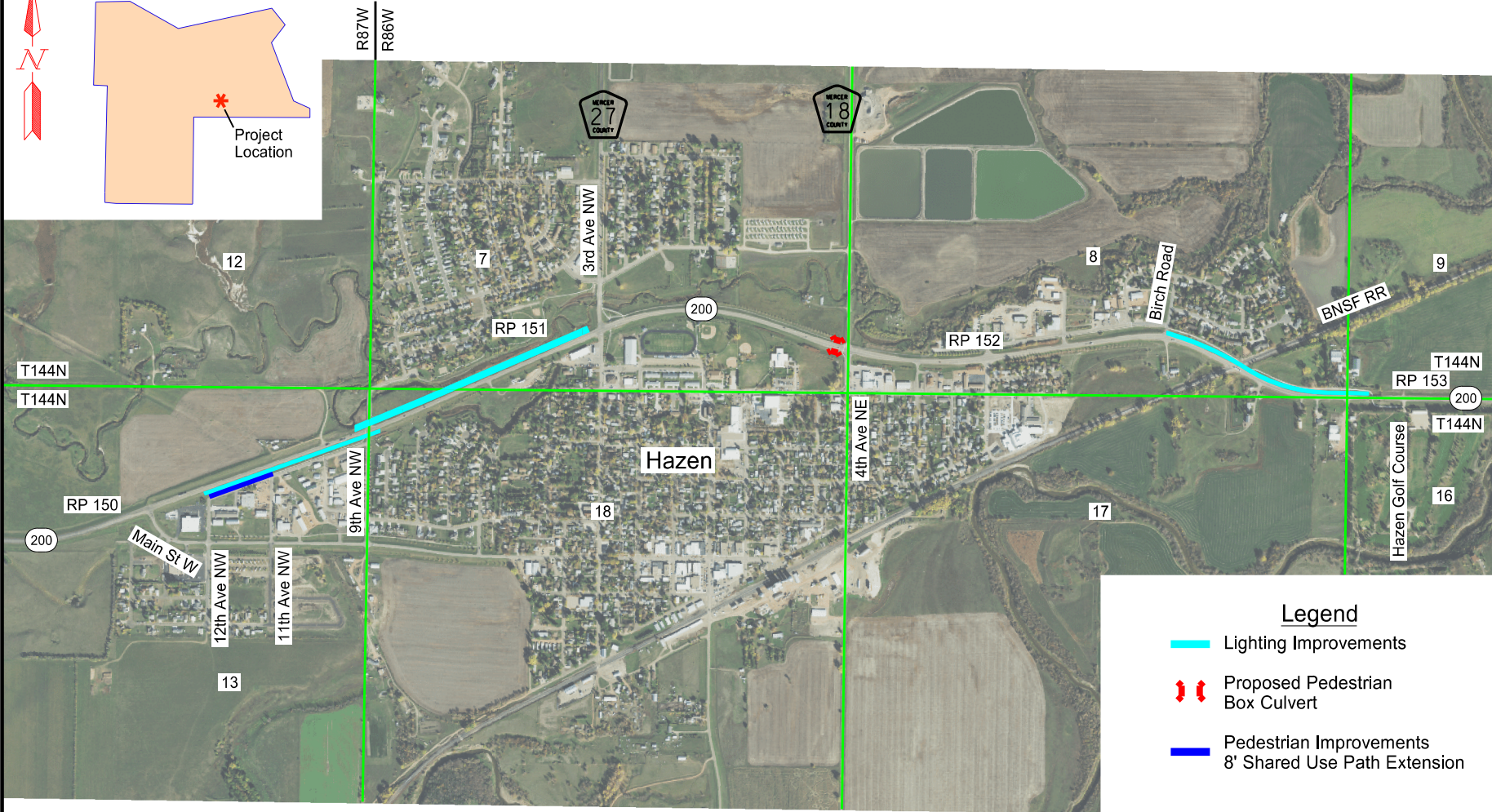
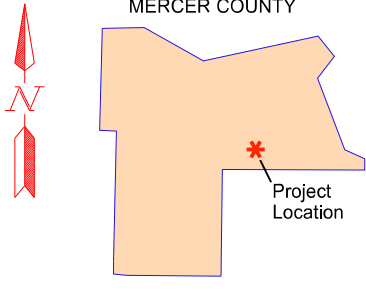
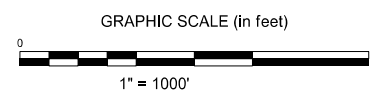


ND 200 Main St W - Hazen Golf Course Lighting, Shared-Use Path, Box Culvert Pedestrian Crossing



Legend

- Lighting Improvements
- Pedestrian Improvements
8' Shared Use Path Extension
- ⇄ Proposed Pedestrian
Box Culvert



NO. REVISIONS	BY	DATE	APPR.

**ACKERMAN
ESTVOLD**

1907 17th St SE · Minot, ND 58701
701.837.8737 · www.ackerman-estvold.com
Minot, ND | Fargo, ND | Williston, ND | Bismarck, ND

SCALE (H): 1" = 2000' SCALE (V): VSCALE	DRAWN BY: SF DESIGNED BY: SF CHECKED BY: TA
DATE: 4/19/23	

PROJECT NO. NH+5-200(034)150, PCN 22938	1 OF 1
DRAWING NAME Project Location Map	