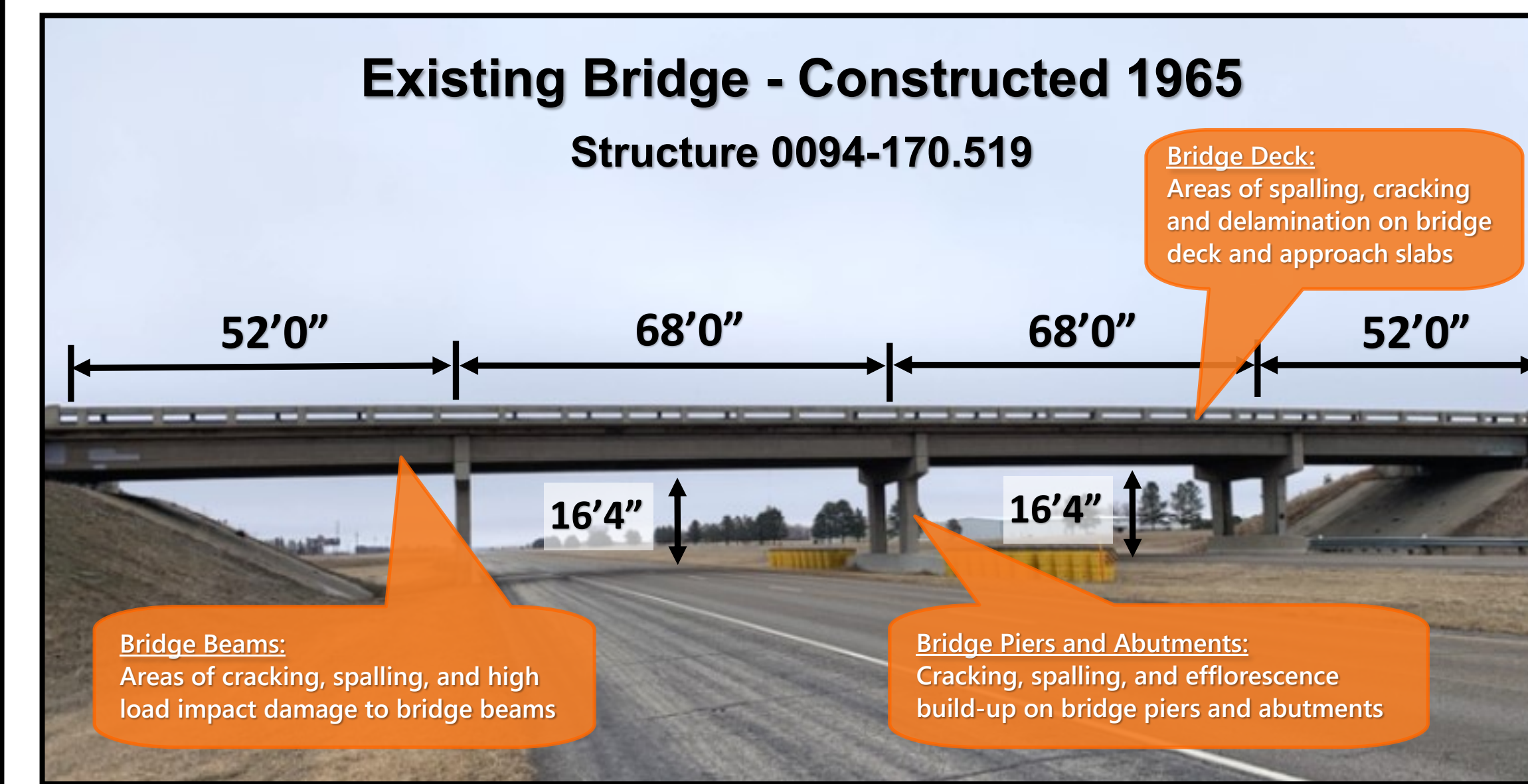
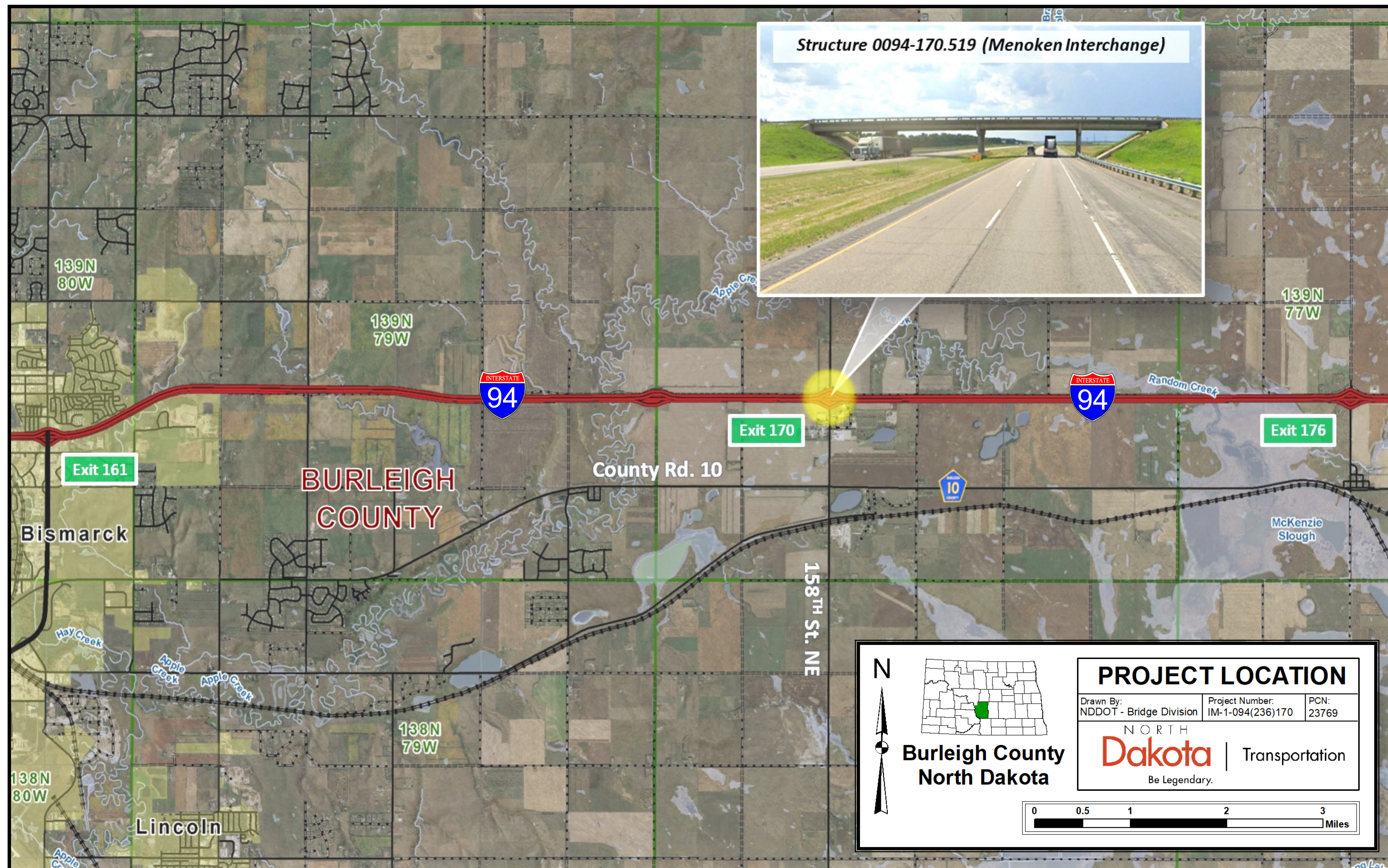


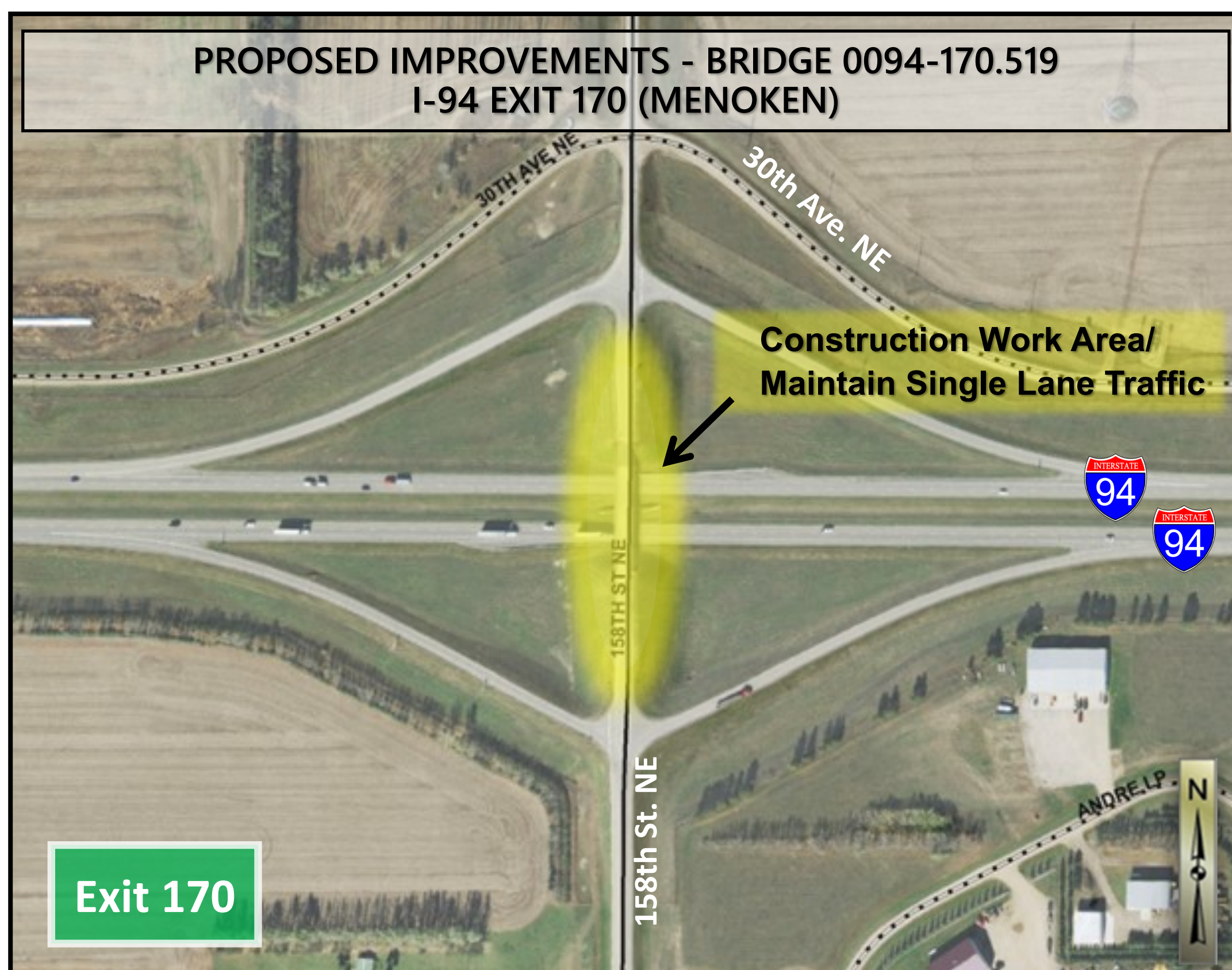
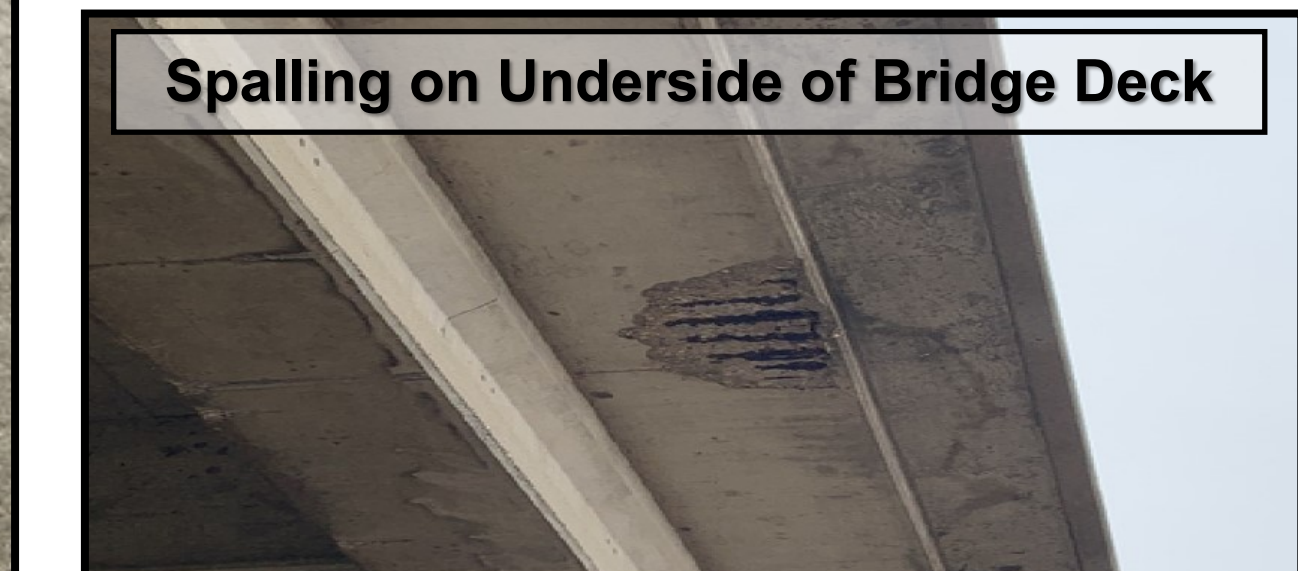
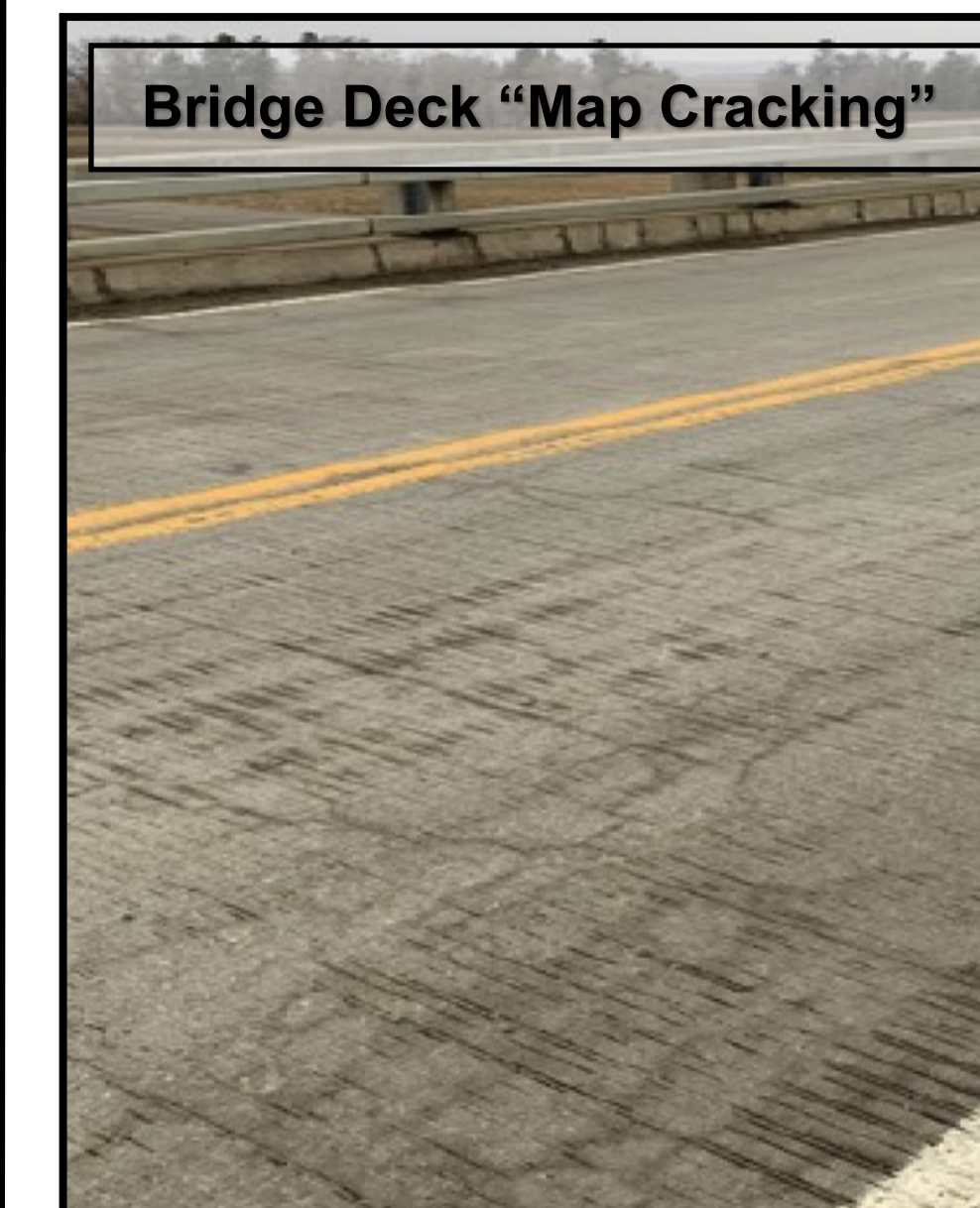
NORTH DAKOTA DEPARTMENT OF TRANSPORTATION

I-94 BRIDGE IMPROVEMENTS - EXIT 170 (MENOKEN)



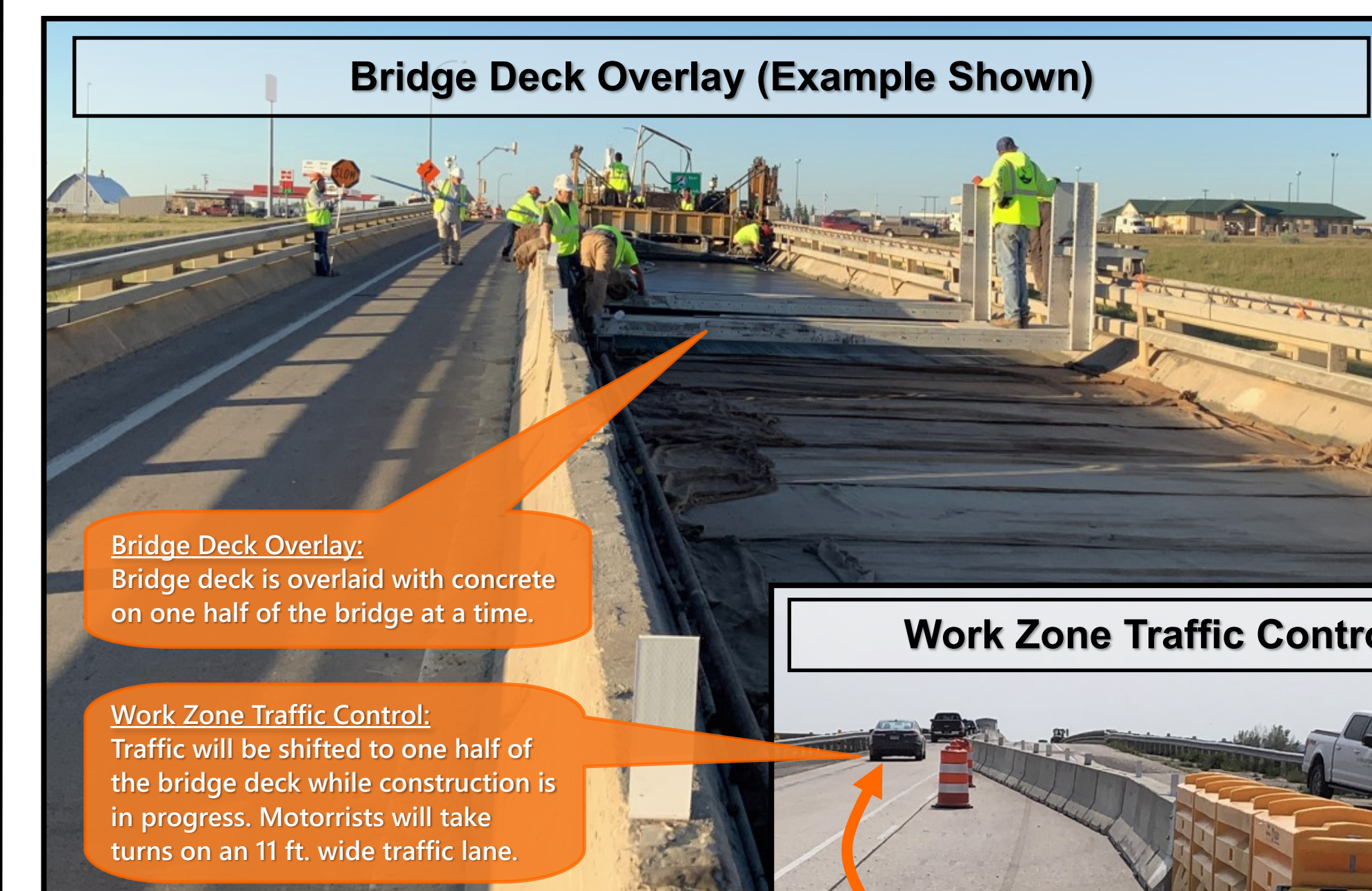
Existing Bridge

- Spans = 4
- Length = 240 ft.
- Width = 28 ft.
- Railing Height = 2'9"
- Vert. Clearance = 16'4"
- Deteriorating bridge components are requiring maintenance and repairs



Proposed Improvements (2026 Construction)

- Overlay the bridge deck with concrete pavement
- Reconstruct the existing bridge approach slabs
- Repair spalling on bridge abutments and wingwalls
- Repair impact damage and cracking on bridge beams
- Mill and overlay asphalt pavement adjacent to bridge and remove/reset guardrail



Project Phasing/WZTC*

- 1) Close one lane of traffic over the existing bridge (bridge will remain open but restricted to one driving lane)
- 2) Route vehicles to adjacent driving lane (11ft. lane width)
- 3) Maintain single-lane traffic across bridge when construction is in progress
- 4) Return traffic to normal driving conditions when construction activities on bridge and roadway are complete

*Project to be completed in 1 construction season

EXHIBIT 1 PROJECT OVERVIEW I-94 BRIDGE IMPROVEMENTS - EXIT 170 (MENOKEN)