

Intersection Improvements

US 2 from Montana to US 85 in Williston

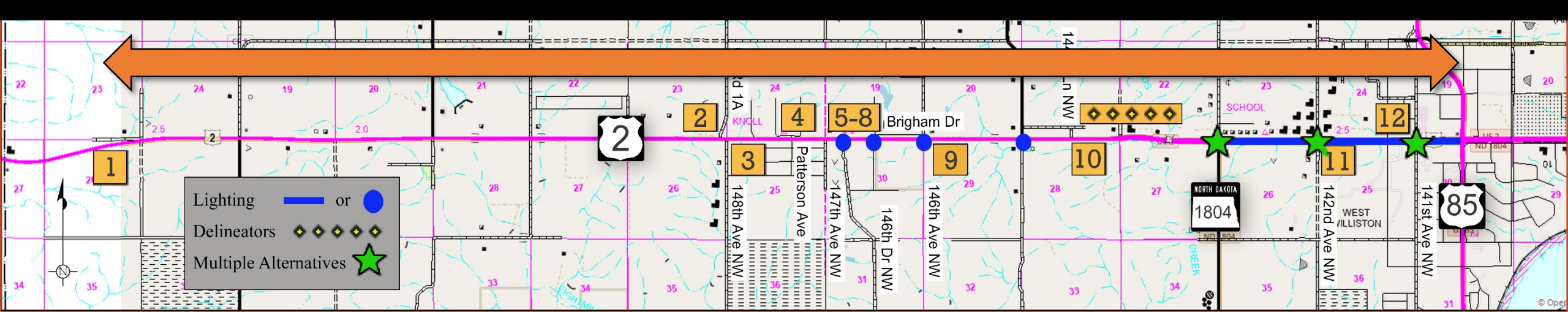


Housekeeping: Forms

- Sign-in Sheet
- Comment Sheet
- NDDOT Title VI Public Participation Survey
 - Forms near the Entrance
 - www.dot.nd.gov
(Public Events Calendar)

Overview

- Background
- Proposed Improvements
- Other Impacts
- Open House/ Opportunity for Input



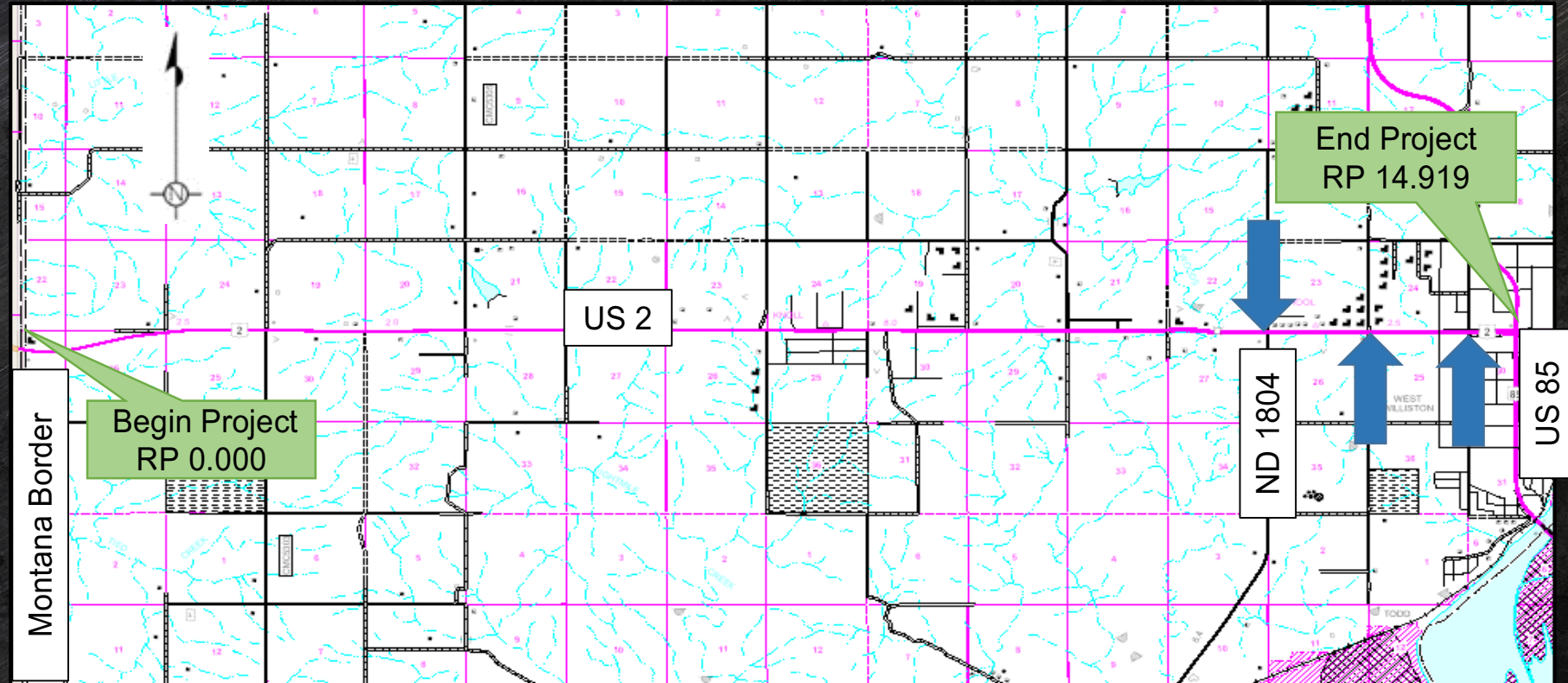
Project Location and Scope:

To reduce fatal & incapacitating crashes.
 Increase sight distance.
 Improve operations.



Project Location

Crash Data



*HEN-7-002(176)000 | PCN 23007 – US 2
Intersection Improvements*

What is a Right Angle Crash?

Right Angle Crashes

- Side Collision
- Broadside Collision
- T-bone Collision



*HEN-7-002(176)000 | PCN 23007 – US 2
Intersection Improvements*

NORTH
Dakota | Transportation
Be Legendary.™

What is a RIGHT ANGLE CRASH?

A Right Angle Crash is not:

- A single car crash
- A rear end collision:
- A side swipe:



*HEN-7-002(176)000 | PCN 23007 – US 2
Intersection Improvements*

NORTH
Dakota | Transportation
Be Legendary.™

What is a RIGHT ANGLE CRASH?

...this is a right angle crash



*HEN-7-002(176)000 | PCN 23007 – US 2
Intersection Improvements*

NORTH
Dakota | Transportation
Be Legendary.™

What is a RIGHT ANGLE CRASH?

...this is a right angle crash



*HEN-7-002(176)000 | PCN 23007 – US 2
Intersection Improvements*

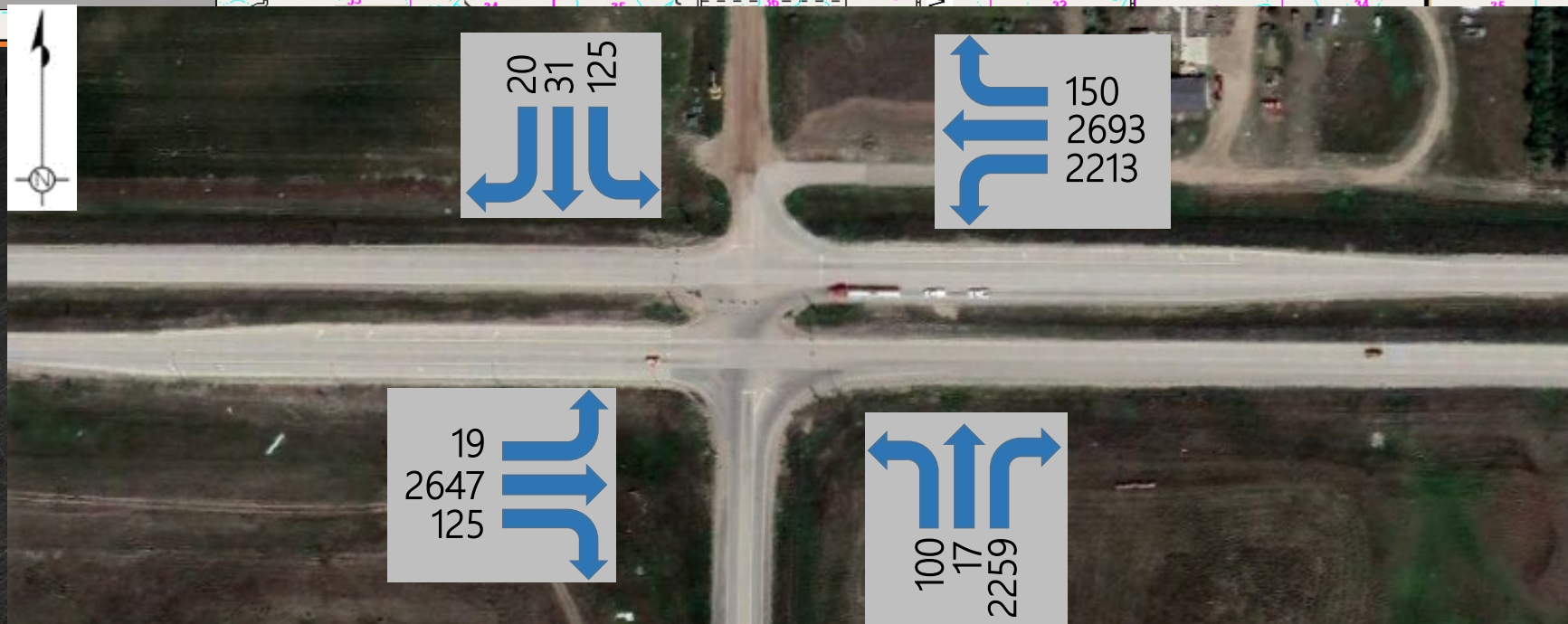
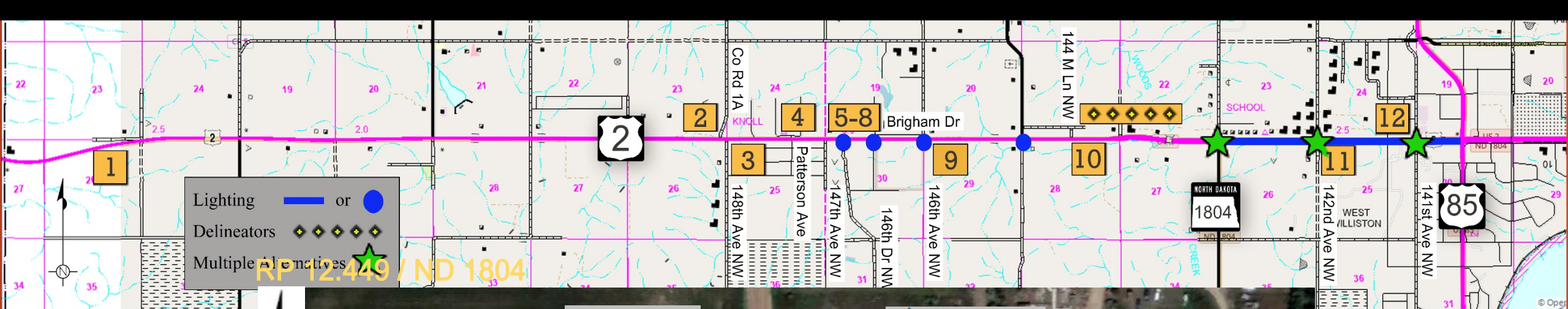
NORTH
Dakota | Transportation
Be Legendary.™

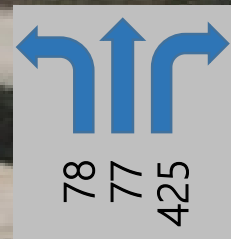
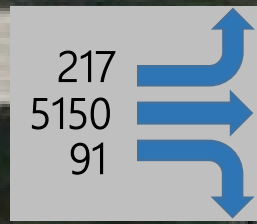
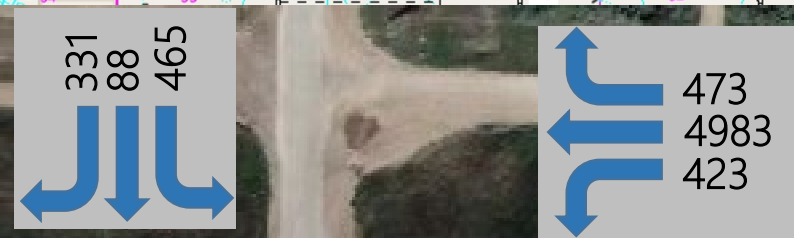
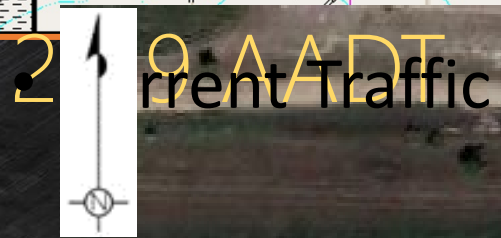
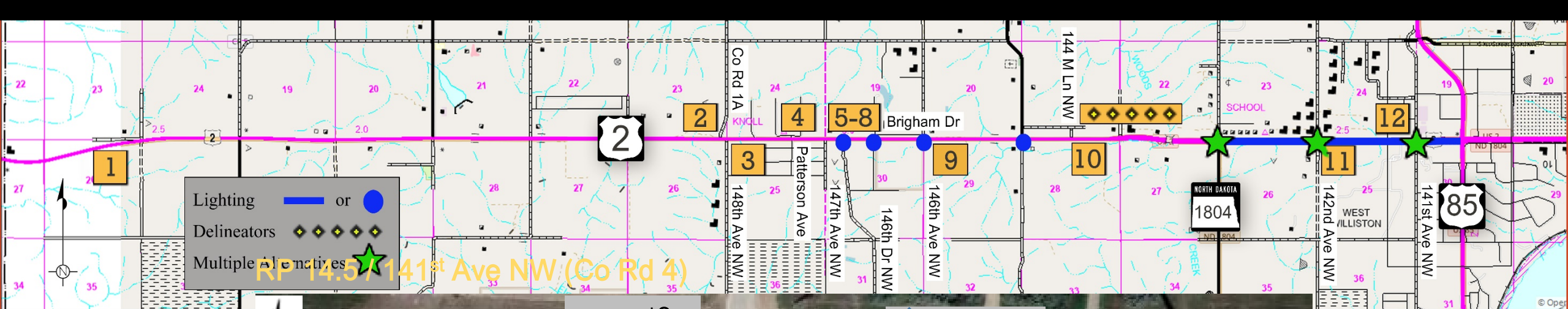
What is a RIGHT ANGLE CRASH?



*HEN-7-002(176)000 | PCN 23007 – US 2
Intersection Improvements*

NORTH
Dakota | Transportation
Be Legendary.™





Proposed Improvement

Alternative A: No Build

Intersections along US 2 unaltered

- No bypass lanes or turn lanes constructed
- No change to lighting and signing
- No sight distance or operational improvements
- No reduction in angle crashes

*HEN-7-002(176)000 | PCN 23007 – US 2
Intersection Improvements*

NORTH
Dakota | Transportation
Be Legendary.™

Proposed Improvement

Alternative B & C: Common Items

Both Alternatives 2 & 3 consist of the following:

- Constructing turn lanes
- Installing lighting
- Delineators along WB at the 2 to 4 lane transition
- Remove temporary signal at ND 1804

*HEN-7-002(176)000 | PCN 23007 – US 2
Intersection Improvements*

NORTH
Dakota | Transportation
Be Legendary.™

Proposed Improvement

Alternative B & C: Common Items

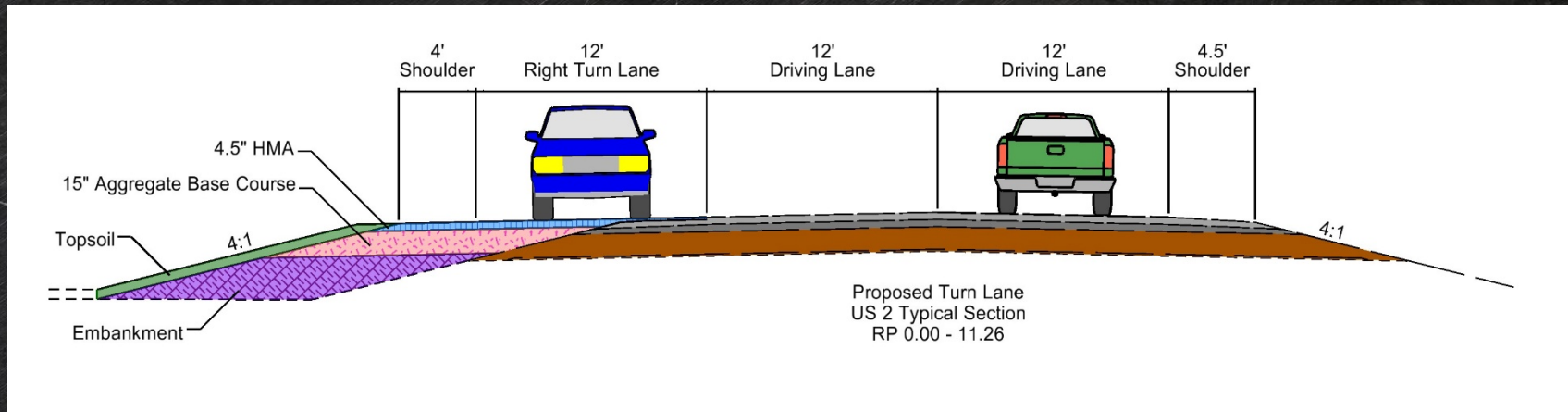
US 2 RP / Cross Street	Proposed Turn Lane Movements			
	WB Right	WB Left	EB Right	EB Left
RP 0.5 / Private Dr	X			
RP 7.4 / Co Rd 1A & 148 th Ave NW	X			
RP 7.5 / 148 th Ave NW		X		
RP 8.1 / Round Prairie Ave & Patterson Ave	X	X		
RP 8.5 / 147 th Ave NW		X		
RP 8.6 / 146 th Dr NW		X	X	
**RP 8.7 / Truck Private Dr	X			
RP 9.0 / Brigham Dr		X		
RP 9.5 / 146 th Ave NW	X			X
RP 11.0 / 144M Ln NW	X			
RP 13.5 / 142 nd Ave NW	X	*		*
RP 14.3 / NDSU Extension	X			

*HEN-7-002(176)000 | PCN 23007 – US 2
Intersection Improvements*

Proposed Improvement

Alternative B & C: Common Items

Typical Section

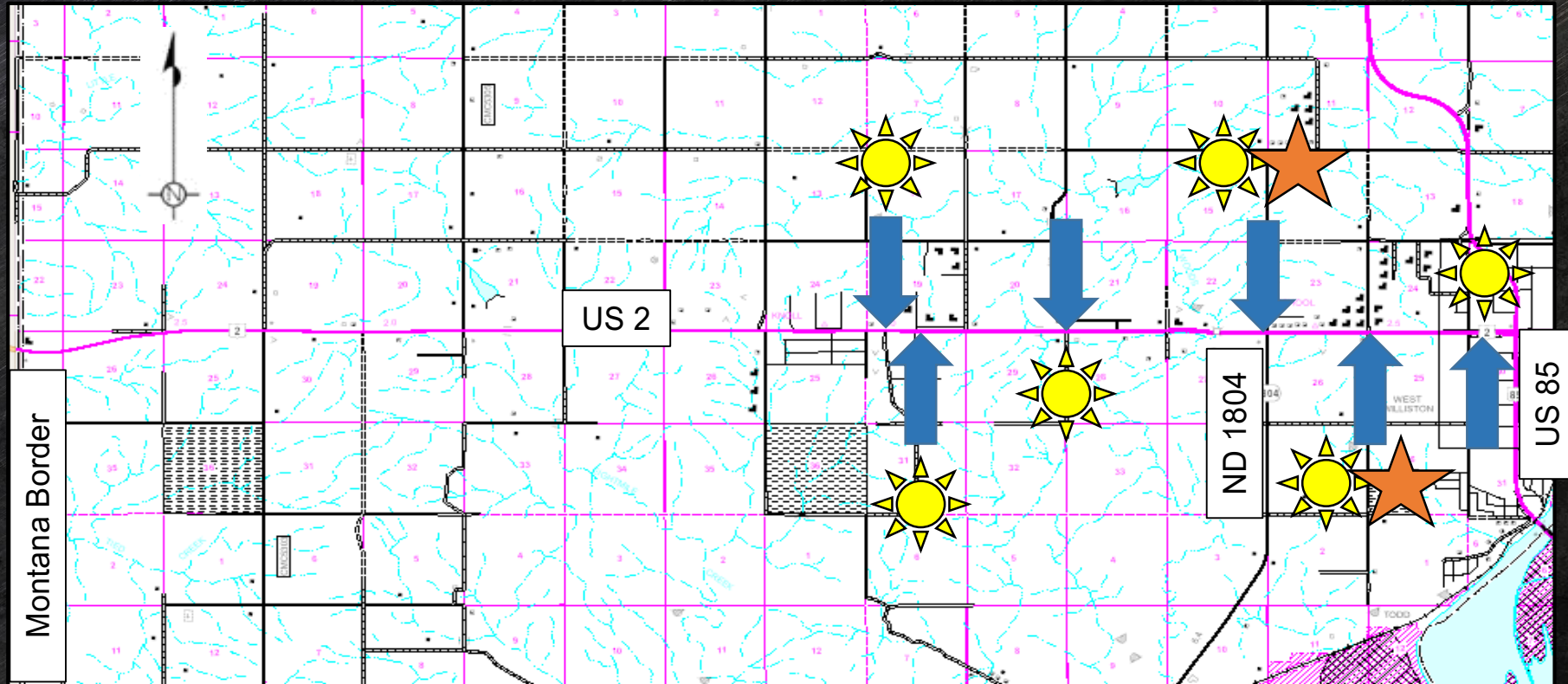


HEN-7-002(176)000 | PCN 23007 – US 2
Intersection Improvements

NORTH
Dakota | Transportation
Be Legendary.™

Proposed Improvement

Alternative B & C: Common Items



HEN-7-002(176)000 | PCN 23007 – US 2
Intersection Improvements

Proposed Improvement

Alternative B & C: WB Delineators



*HEN-7-002(176)000 | PCN 23007 – US 2
Intersection Improvements*

NORTH
Dakota | Transportation
Be Legendary.™

Proposed Improvement

Alternative B: Construct Offset Lefts

RP 12.449 / ND 1804



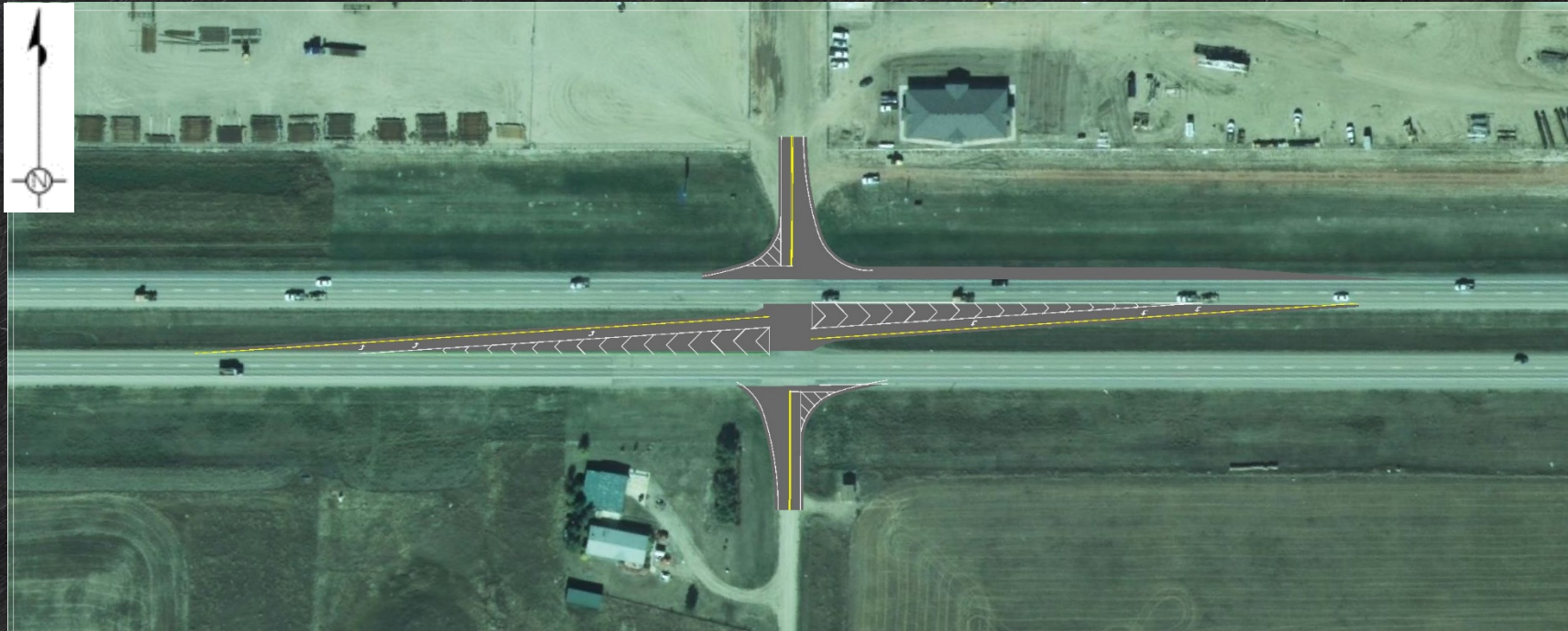
*HEN-7-002(176)000 | PCN 23007 – US 2
Intersection Improvements*

NORTH
Dakota | Transportation
Be Legendary.™

Proposed Improvement

Alternative B: Construct Offset Lefts

RP 13.5 / 142nd Ave NW



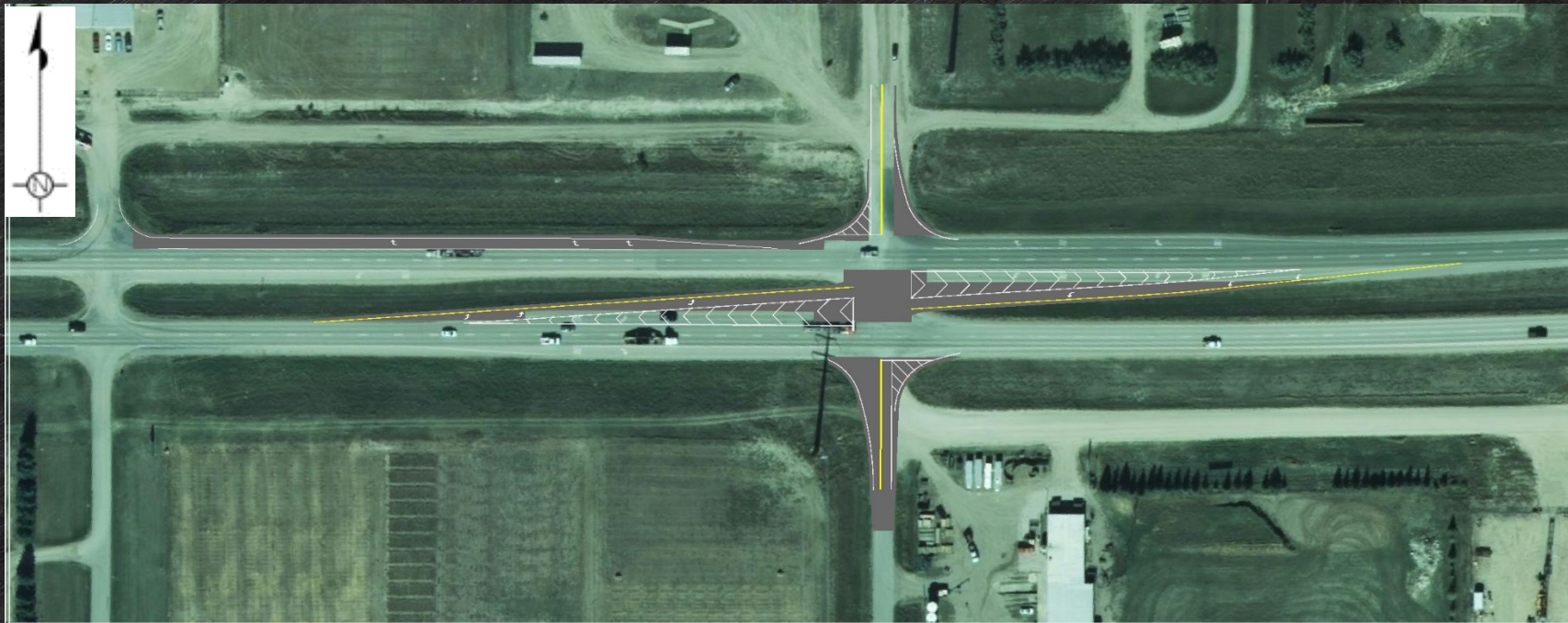
*HEN-7-002(176)000 | PCN 23007 – US 2
Intersection Improvements*

NORTH
Dakota | Transportation
Be Legendary.™

Proposed Improvement

Alternative B: Construct Offset Lefts

RP 14.5 / 141st Ave NW (Co Rd 4)



*HEN-7-002(176)000 | PCN 23007 – US 2
Intersection Improvements*

NORTH
Dakota | Transportation
Be Legendary.™

Proposed Improvement

Alternative C: Construct RCI

Typical RCI Example

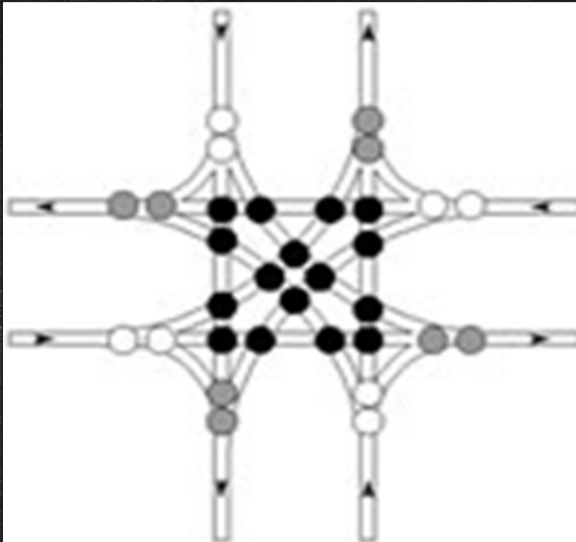


*HEN-7-002(176)000 | PCN 23007 – US 2
Intersection Improvements*

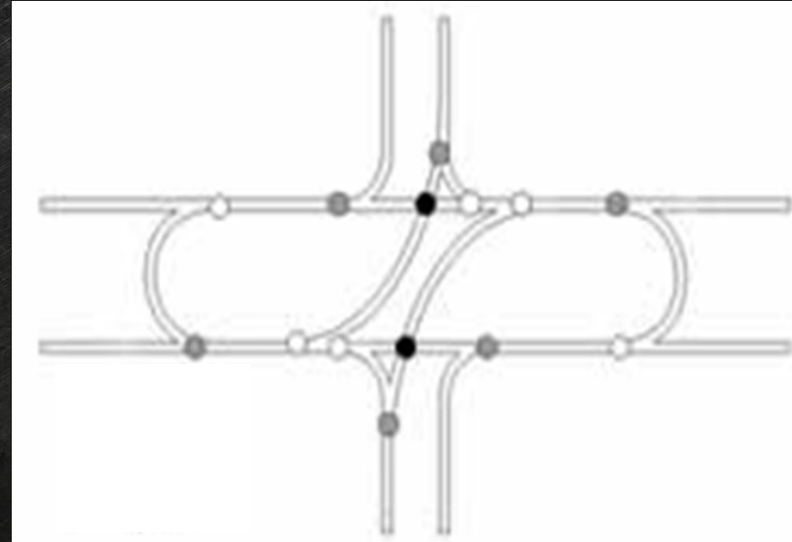
Proposed Improvement

Alternative C: Construct RCI

Conventional Intersection



Reduced Conflict Intersection



○ Crossing

○ Merging

○ Diverging

HEN-7-002(176)000 | PCN 23007 – US 2
Intersection Improvements

NORTH
Dakota | Transportation
Be Legendary.™

Proposed Improvement

Alternative C: Construct RCI

RP 12.449 / ND 1804



*HEN-7-002(176)000 | PCN 23007 – US 2
Intersection Improvements*

NORTH
Dakota | Transportation
Be Legendary.™

Proposed Improvement

Alternative C: Construct RCI

RP 13.5 / 142nd Ave NW



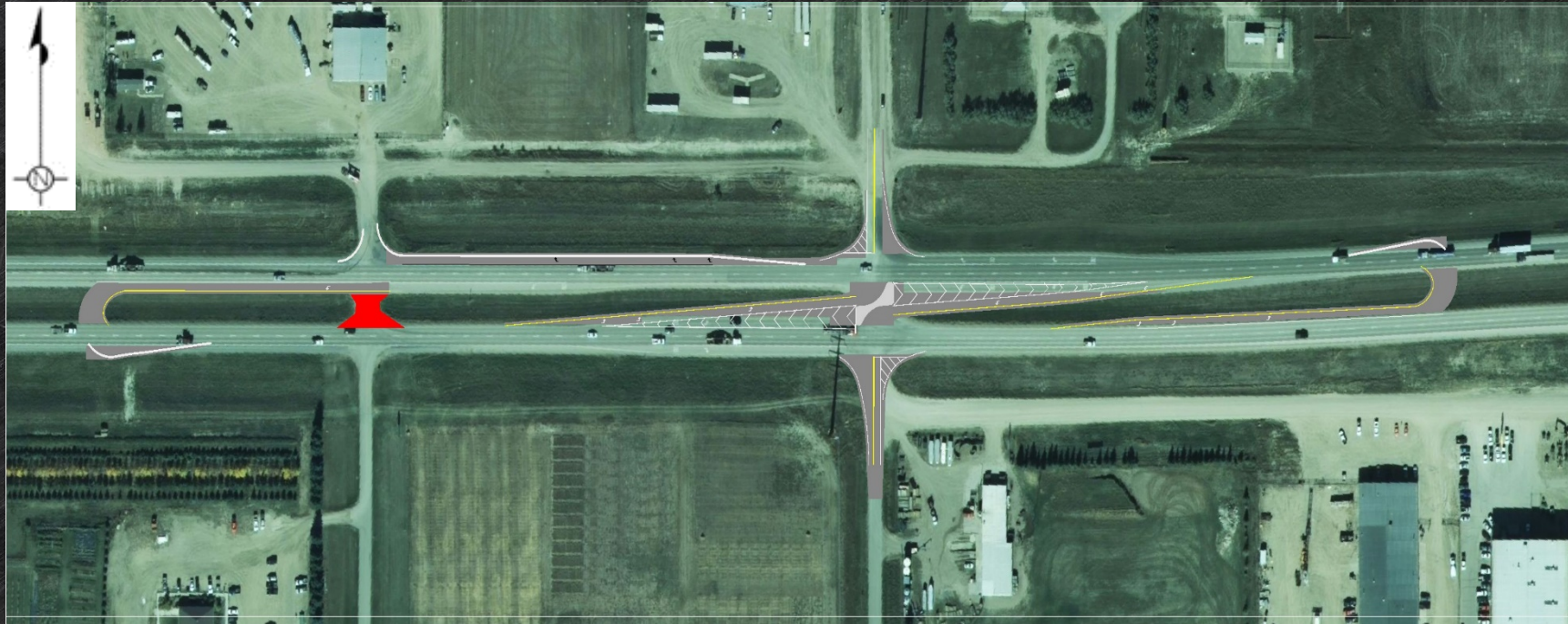
*HEN-7-002(176)000 | PCN 23007 – US 2
Intersection Improvements*

NORTH
Dakota | Transportation
Be Legendary.™

Proposed Improvement

Alternative C: Construct RCI

RP 14.5 / 141st Ave NW (Co Rd 4)

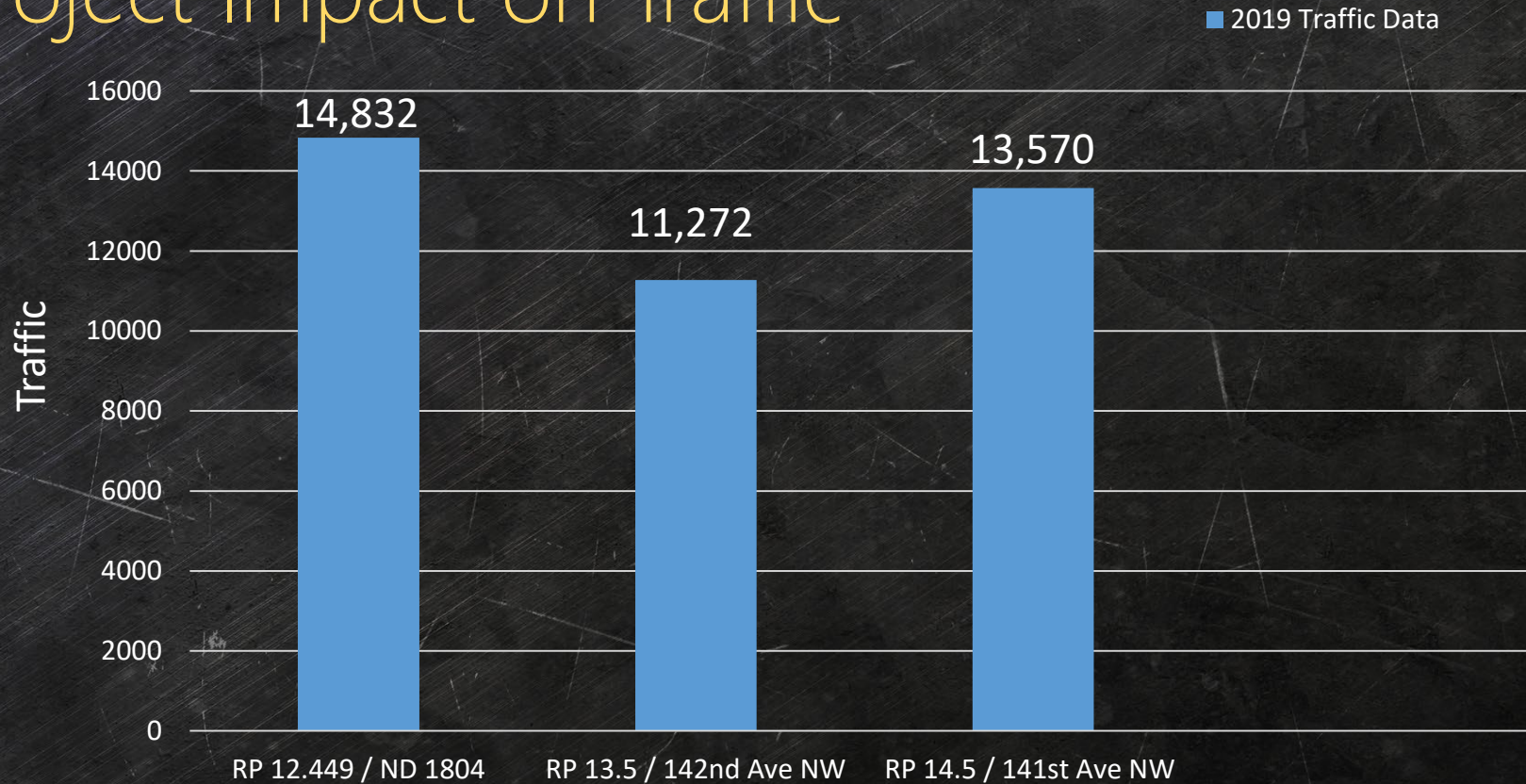


*HEN-7-002(176)000 | PCN 23007 – US 2
Intersection Improvements*

NORTH
Dakota | Transportation
Be Legendary.™

Traffic Data

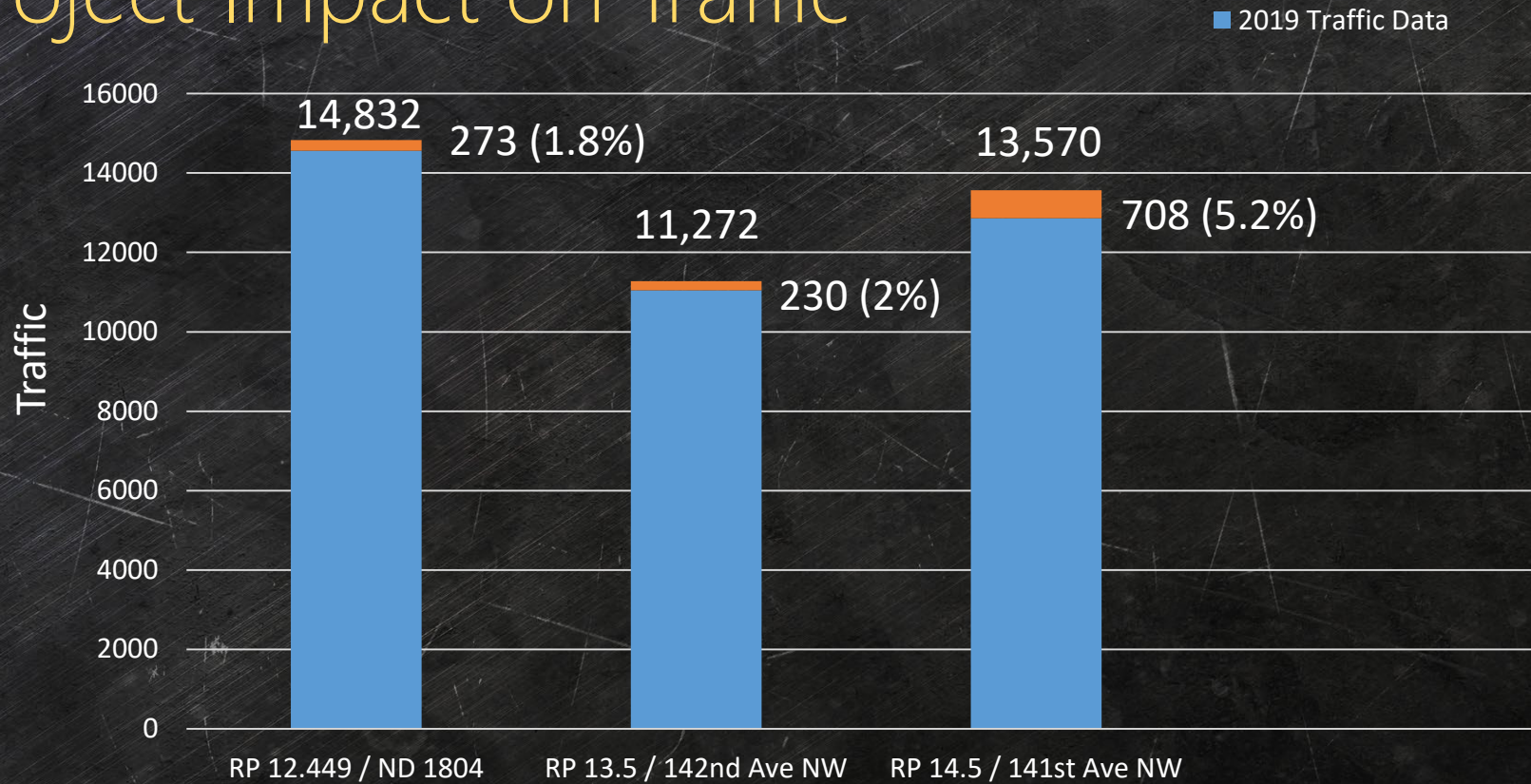
Project Impact on Traffic



*HEN-7-002(176)000 | PCN 23007 – US 2
Intersection Improvements*

Traffic Data

Project Impact on Traffic



*HEN-7-002(176)000 | PCN 23007 – US 2
Intersection Improvements*

Other Impacts

Work Zone

- Lane closures for construction on the 4 lane portion.
- Shoulder closures for all construction on the 2 lane portion.
- Both sides: close one shoulder at a time.
- Phasing will keep all intersections open during construction.
- Flagging for access maintenance will be utilized during construction.

*HEN-7-002(176)000 | PCN 23007 – US 2
Intersection Improvements*

NORTH
Dakota | Transportation
Be Legendary.™

Other Impacts

Utilities

- Water
- Telephone
- Electric
- Gas
- Television
- OH Utility Poles

*HEN-7-002(176)000 | PCN 23007 – US 2
Intersection Improvements*

NORTH
Dakota | Transportation
Be Legendary.™

Open House

Opportunity for Input

- NDDOT Representatives are on hand to answer your questions and discuss your concerns.
- Please visit with us at the exhibits around the room.

*HEN-7-002(176)000 | PCN 23007 – US 2
Intersection Improvements*

NORTH
Dakota | Transportation
Be Legendary.™

Intersection Improvements

US 2 from Montana to US 85 in Williston

