

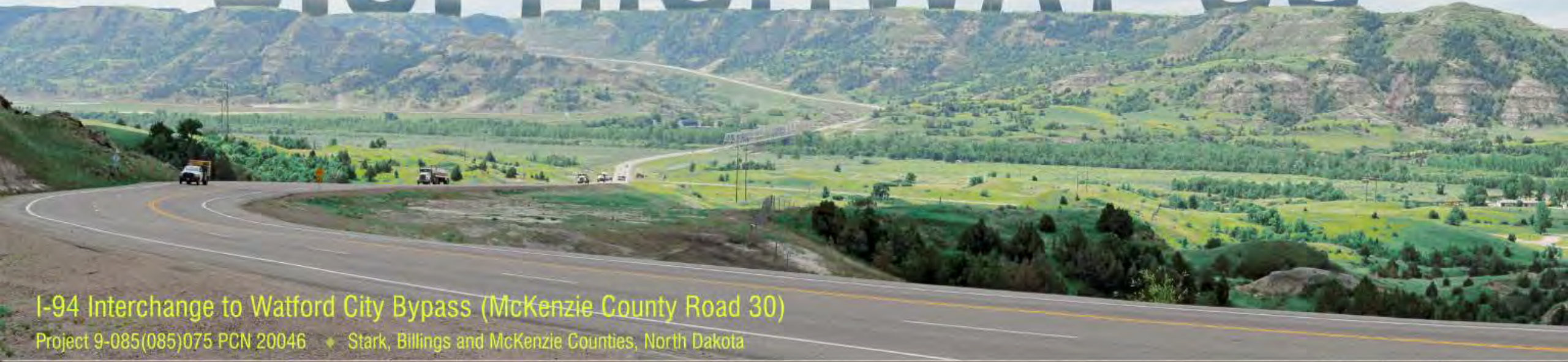


May 29, 2018:  
5:00 p.m. to 8:00 p.m. (MDT)  
Belfield Memorial Hall

May 30, 2018:  
5:00 p.m. to 8:00 p.m. (MDT)  
Billings County Rural Fire Hall

May 31, 2018:  
5:00 p.m. to 8:00 p.m. (CDT)  
Watford City City Hall

# U.S. HIGHWAY 85

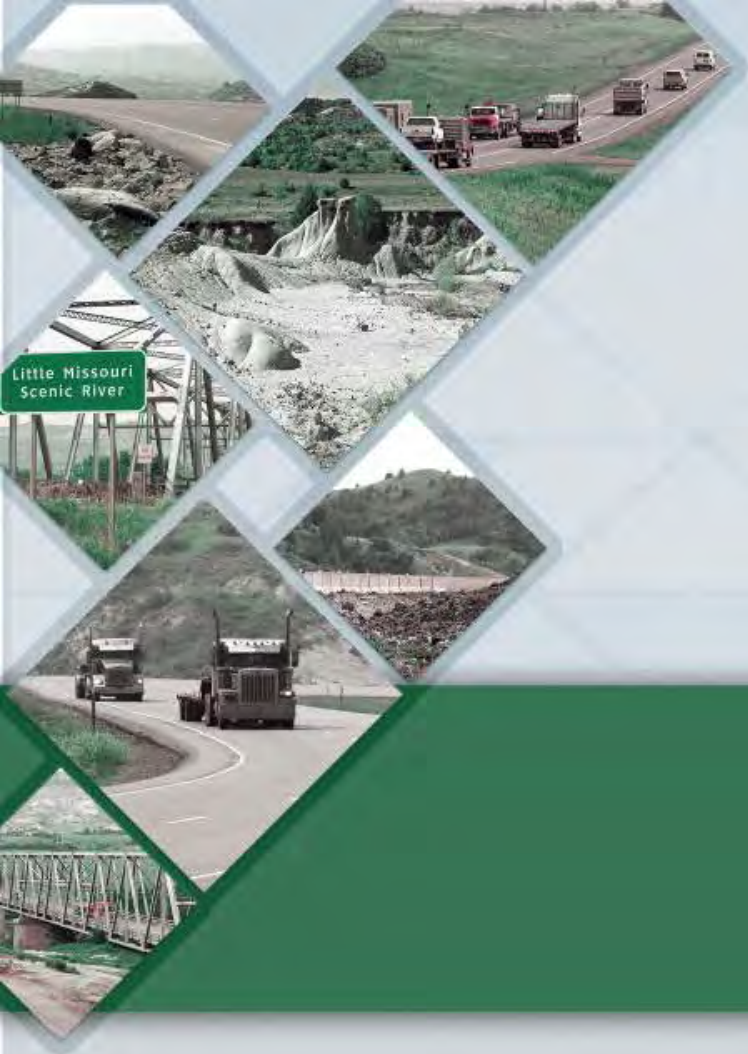


I-94 Interchange to Watford City Bypass (McKenzie County Road 30)  
Project 9-085(085)075 PCN 20046 ♦ Stark, Billings and McKenzie Counties, North Dakota



*Public Hearing* 





# Introductions & Housekeeping

# PUBLIC PARTICIPATION SURVEY

- › Optional anonymous survey
- › Used by FHWA & NDDOT to ensure all demographics are served
- › Leave completed surveys in box on sign-in table or send by mail

**NDDOT TITLE VI PUBLIC PARTICIPATION SURVEY**  
North Dakota Department of Transportation, Civil Rights  
SPR 62146 (Rev. 2/2014)

**PLEASE USE DARK INK AND PRINT CLEARLY**  
The Civil Rights Act of 1964 and related nondiscrimination authorities require the North Dakota Department of Transportation to ensure everyone has the opportunity to comment on the transportation programs and activities that may affect their community.

To help with that, we ask that you respond to the following questions. You are not required to disclose the information requested in order to participate. Any information provided to the NDDOT will be retained solely for the purpose of collecting statistical data to ensure inclusion of all segments of the population affected by transportation programs and activities.

**Sex:**  Female  Male **Disability:**  Yes  No

**Age:**  34 and younger  35-54  55 and older

**Race:**  
 American Indian/Alaskan Native  Native Hawaiian/Other Pacific Islander  
 Asian  White  
 Black/African American  Hispanic or Latino

**Language most frequently spoken in your home:**  
 Arabic  German  Somali  Vietnamese  
 Bosnian  Nepali  Spanish  Other \_\_\_\_\_  
 Croatian  Russian  Swahili  
 English  Serbian  Turkish

**Do you receive public assistance?**  Yes  No

**Indicate how you heard about the event:**  
 Internet  Mailing  NDDOT Contact  Newspaper  
 Radio  Social Service Agency  Television  
 Advocacy Group (which group) \_\_\_\_\_  
 Other \_\_\_\_\_

**Event Date** [ ] / [ ] / [ ]

**Div/Dist Number** [ ]

**For Office Use**

**Event Date** [ ] / [ ] / [ ] **City** [ ] **County** [ ] **MPO**  
 Bismarck-Mandan  
 Fargo-Moorhead Metro COG  
 Grand Forks-East Grand Forks

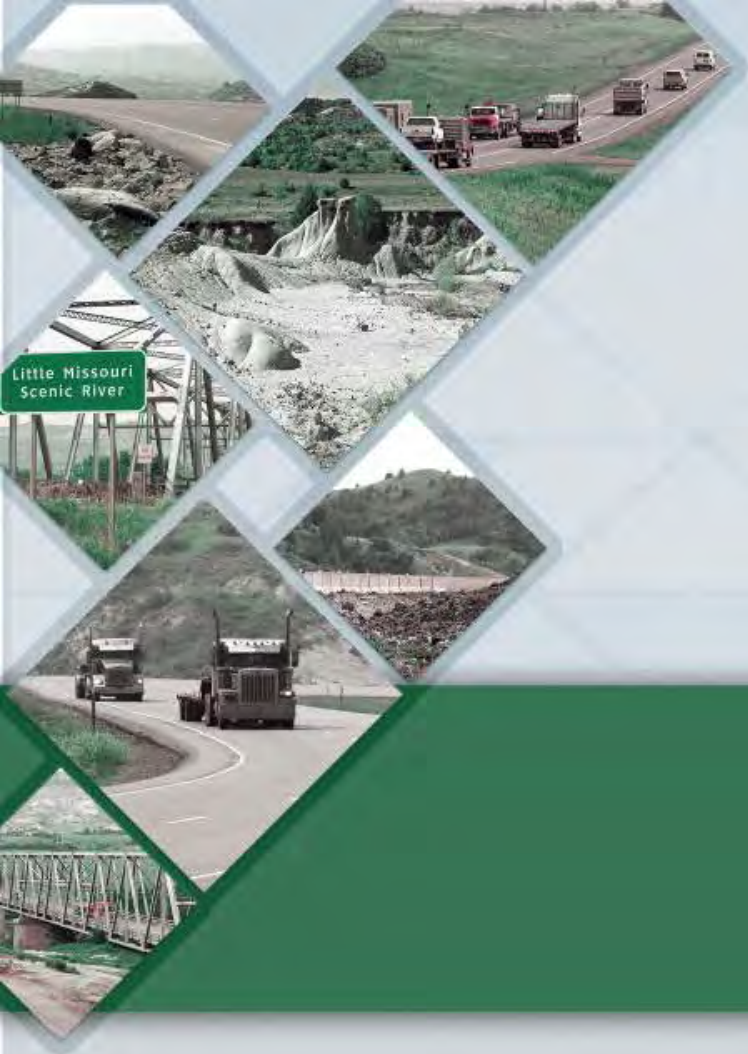
**Div/Dist Number** [ ] **PCN** [ ] **ROW**  Negotiation  Relocation **Consultant** [ ] **Subrecipient**  
 Yes  No

After you have completed this form, please place it in the designated location.

# PUBLIC HEARING OBJECTIVES

- › Review Proposed Project and Purpose & Need
- › Describe the Preferred Alternative & Options:
  - » Roadway Section
  - » I-94 Interchange
  - » Fairfield
  - » ND-200/US Highway 85 Intersection
  - » Badlands
  - » Wildlife Crossings
  - » Long X Bridge
  - » Trail
  - » Roadway Section near Watford City
- › Discuss impacts associated with the Preferred Alternative
- › Describe Long X Bridge Replacement Project
- › Gather input on the Project and Draft Environmental Impact Statement (EIS)
  - » Comments due June 25, 2018





# Proposed Project and Purpose & Need

# PROPOSED PROJECT

- › Expand US Highway 85 to four lanes with flexible design
- › Rehabilitate or replace the historic Long X Bridge over the Little Missouri River
- › EIS
  - ›› Lead agencies: FHWA & NDDOT
  - ›› Cooperating Agencies: NPS, USACE & USFS

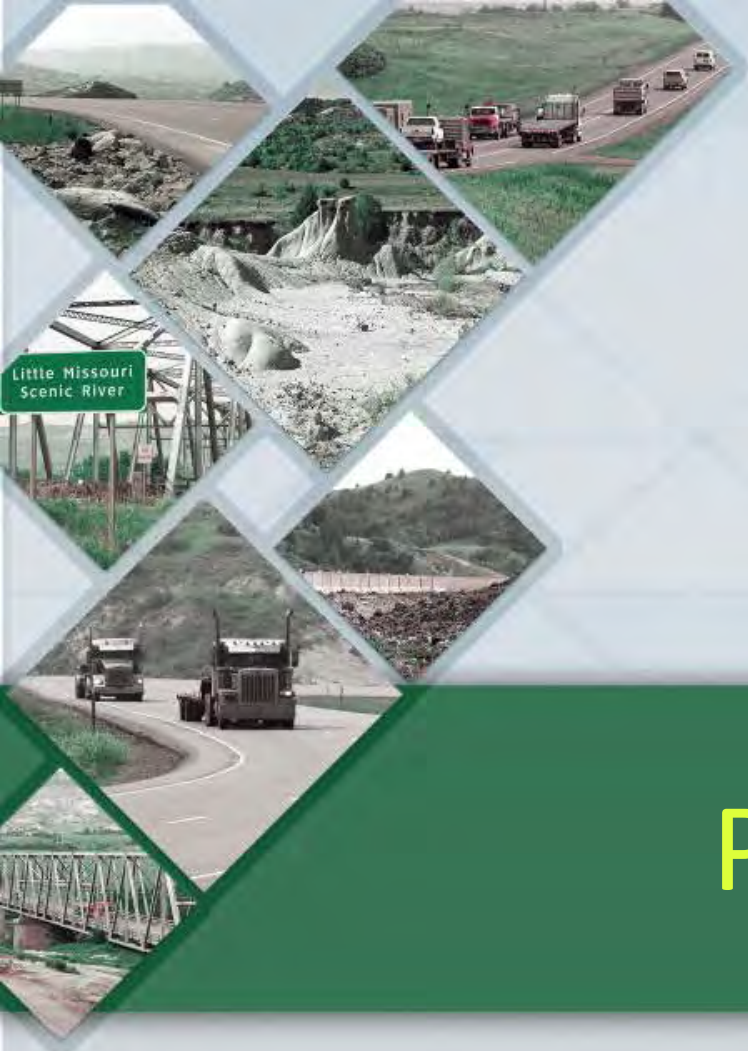




# PURPOSE & NEED

- › Social Demands/  
Economic Development
- › System Linkage/  
Connectivity
- › Safety
- › Capacity/Traffic Volumes
- › Transportation  
Demand/Roadway  
Classification
- › Slope Instability/Landslides
- › Ecological Connectivity





# Preferred Alternative & Options

Roadway Section

I-94 Interchange

Fairfield

ND-200/US Highway 85 Intersection

Badlands

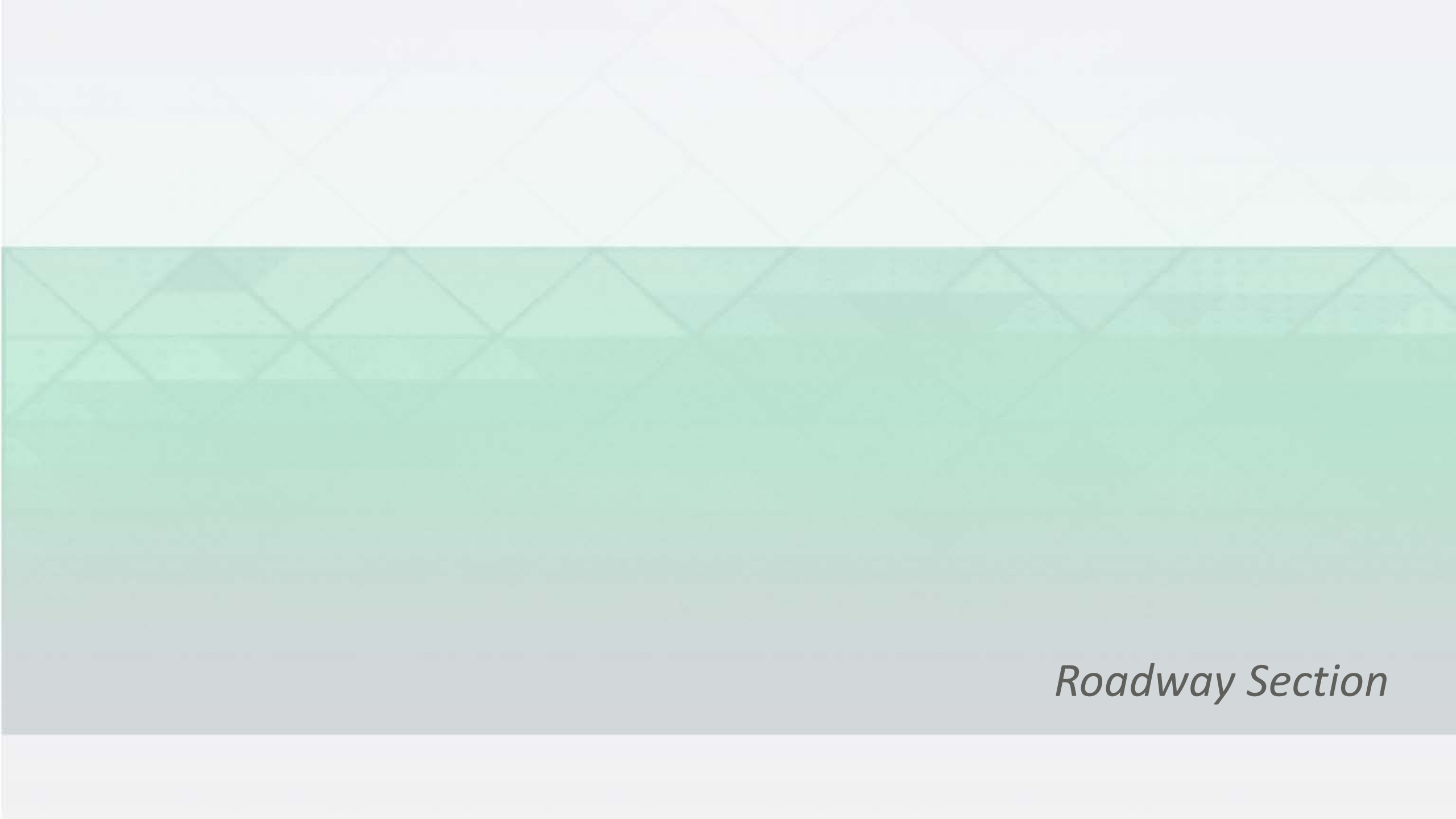
Wildlife Crossings

Long X Bridge

Trail

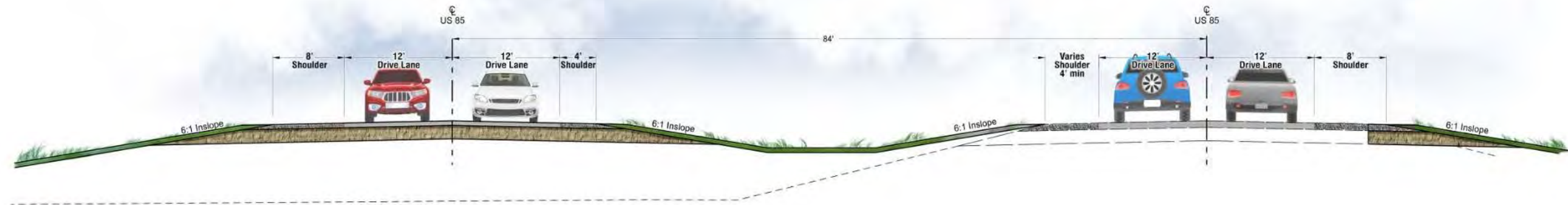
Roadway Section near Watford City





*Roadway Section*

# ALTERNATIVE B: FOUR-LANE DIVIDED HIGHWAY WITH DEPRESSED MEDIAN





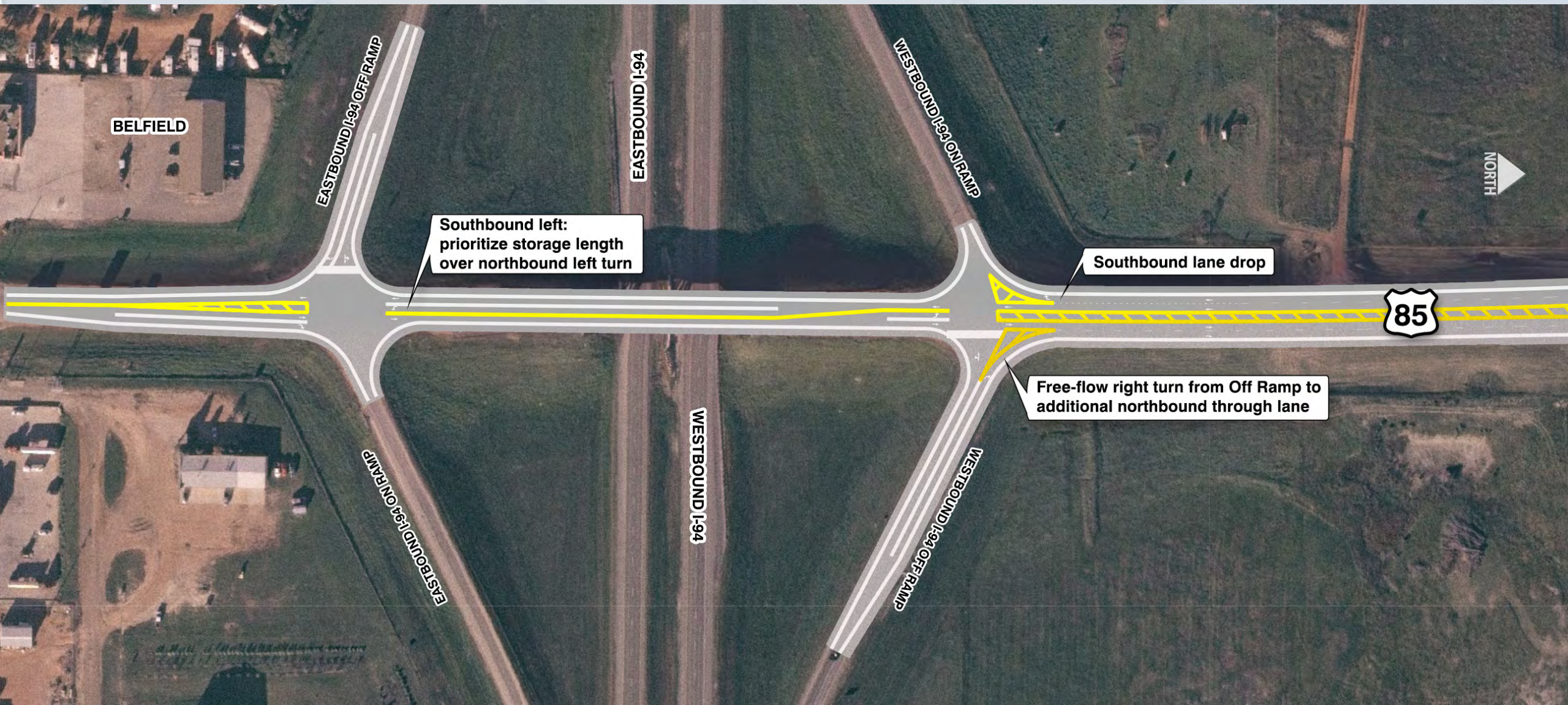
*I-94 Interchange*

# I-94 INTERCHANGE





# I-94 INTERCHANGE



BELFIELD

EASTBOUND I-94 OFF RAMP

EASTBOUND I-94

WESTBOUND I-94 ON RAMP

NORTH

Southbound left:  
prioritize storage length  
over northbound left turn

Southbound lane drop

85

Free-flow right turn from Off Ramp to  
additional northbound through lane

WESTBOUND I-94

EASTBOUND I-94 ON RAMP

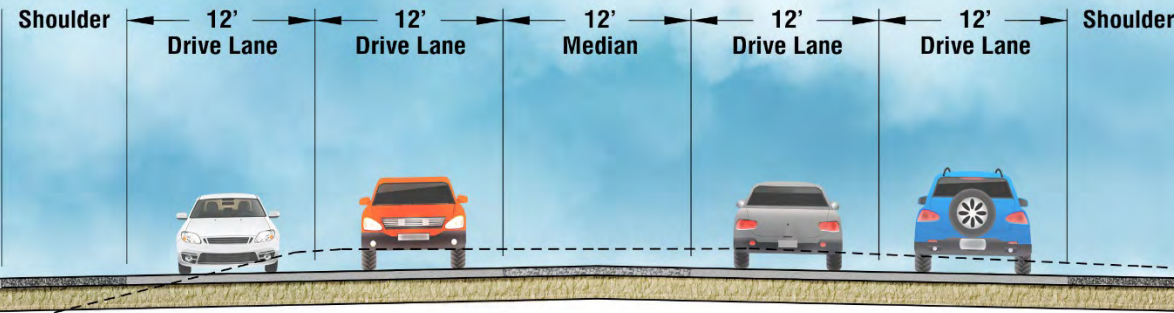
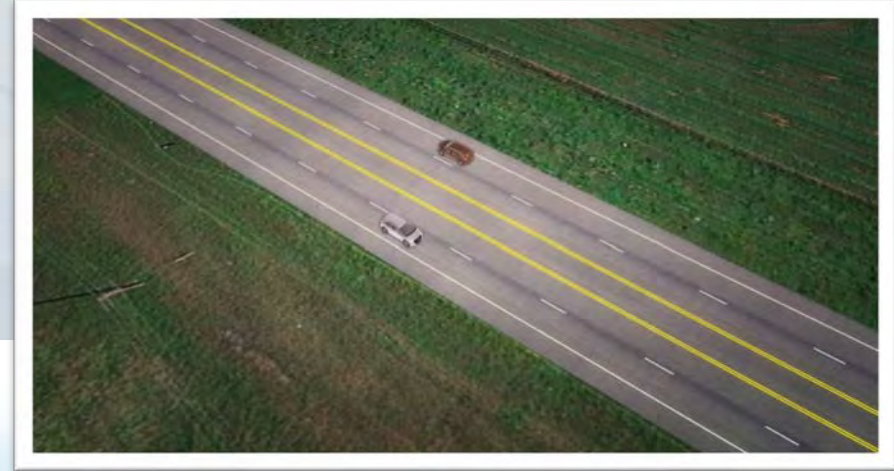
WESTBOUND I-94 OFF RAMP



*Fairfield*



# FAIRFIELD OPTION FF-1: URBANIZED, FOUR-LANE HIGHWAY ON EXISTING ALIGNMENT



*ND-200/US Highway 85 Intersection*



# ND-200/US HIGHWAY 85 INTERSECTION OPTION INT-2: MULTI-LANE ROUNDABOUT

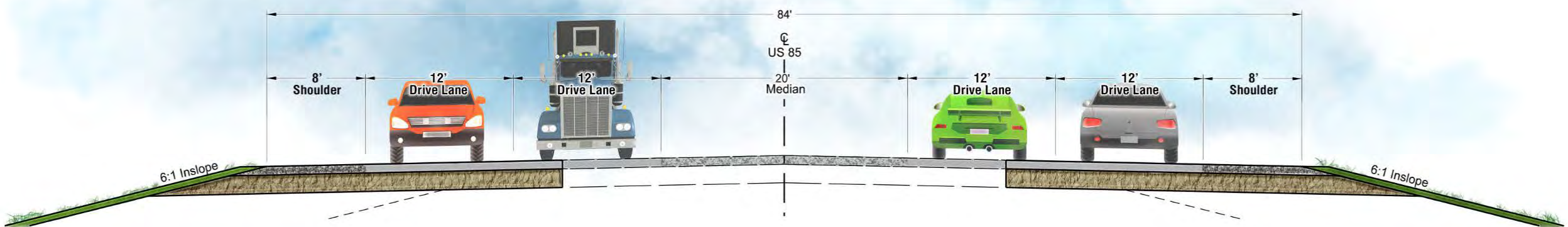
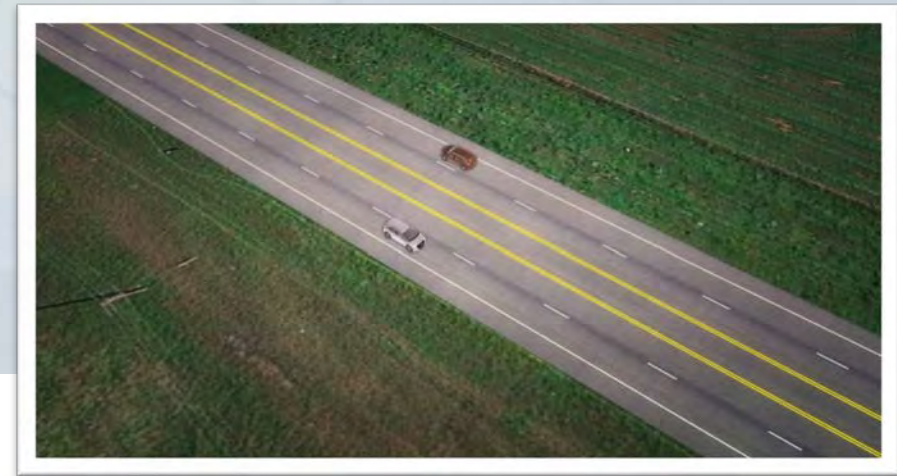




*Badlands*



# FOUR-LANE DIVIDED HIGHWAY WITH FLUSH, 20-FOOT-WIDE MEDIAN





# SCENIC OVERLOOKS



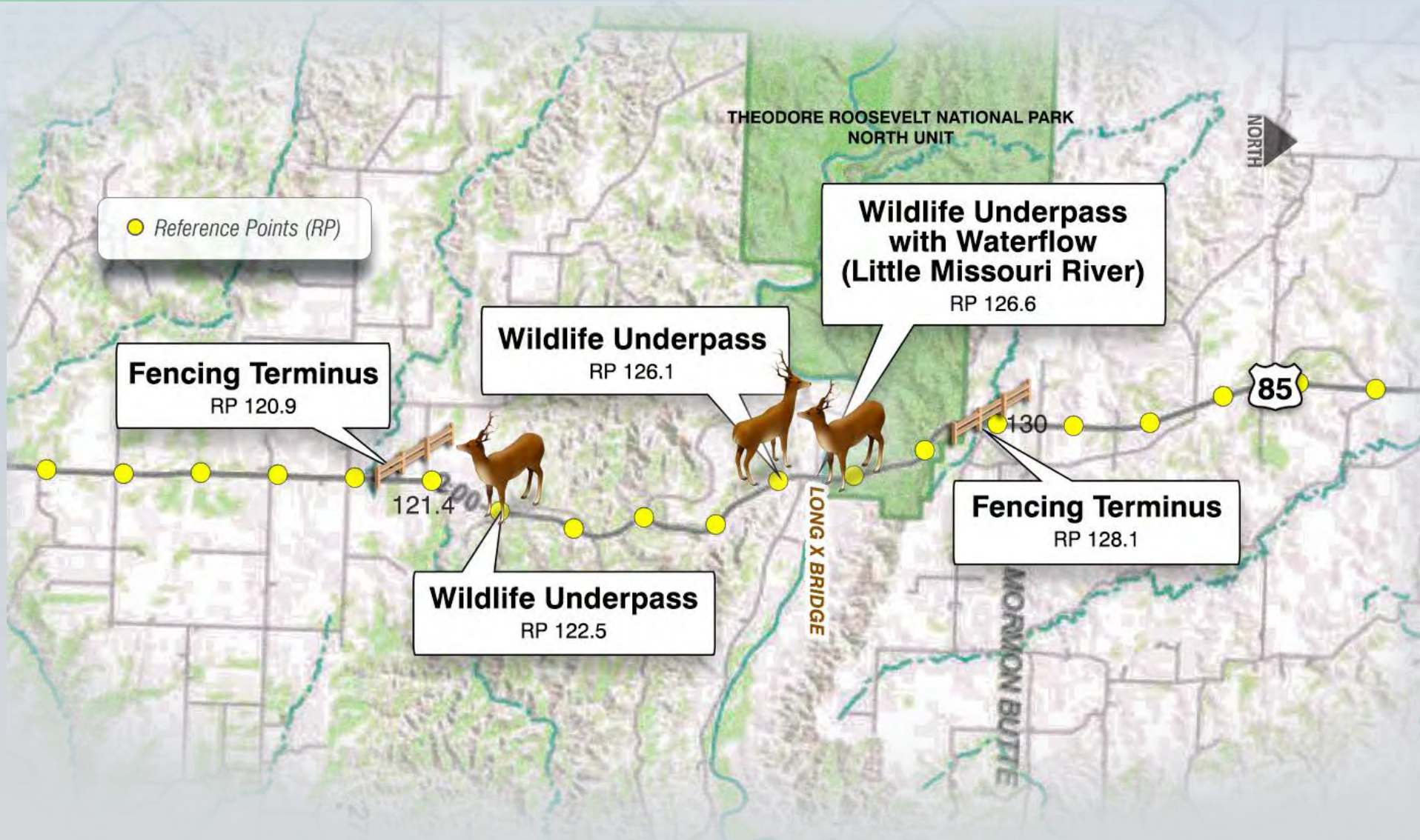
12' Parking Lane

12' Driving Lane

N

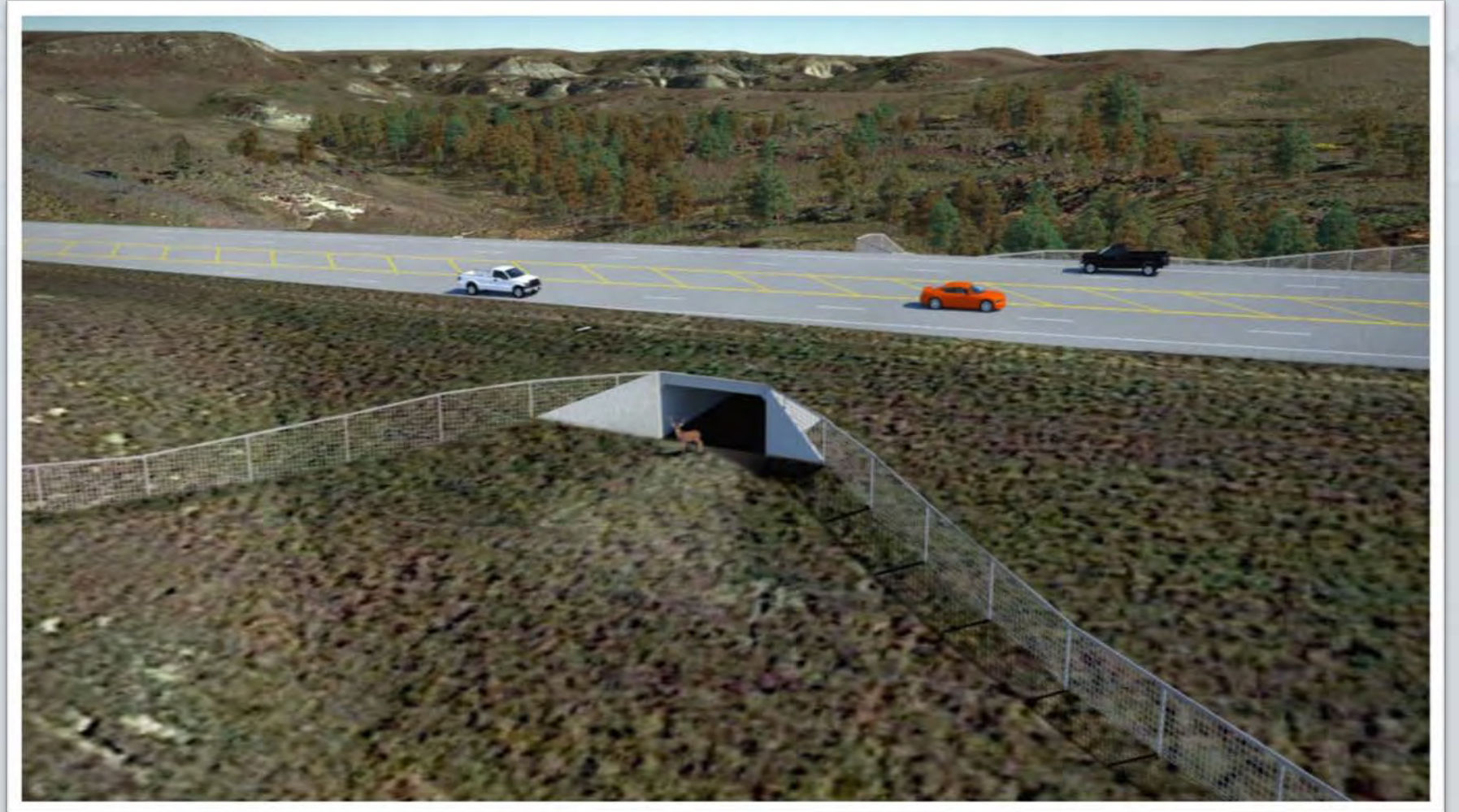


# WILDLIFE CROSSING SYSTEM





# WILDLIFE UNDERPASS SIMULATION (RP 122.5)





# WILDLIFE UNDERPASS EXAMPLES (RP 126.1)

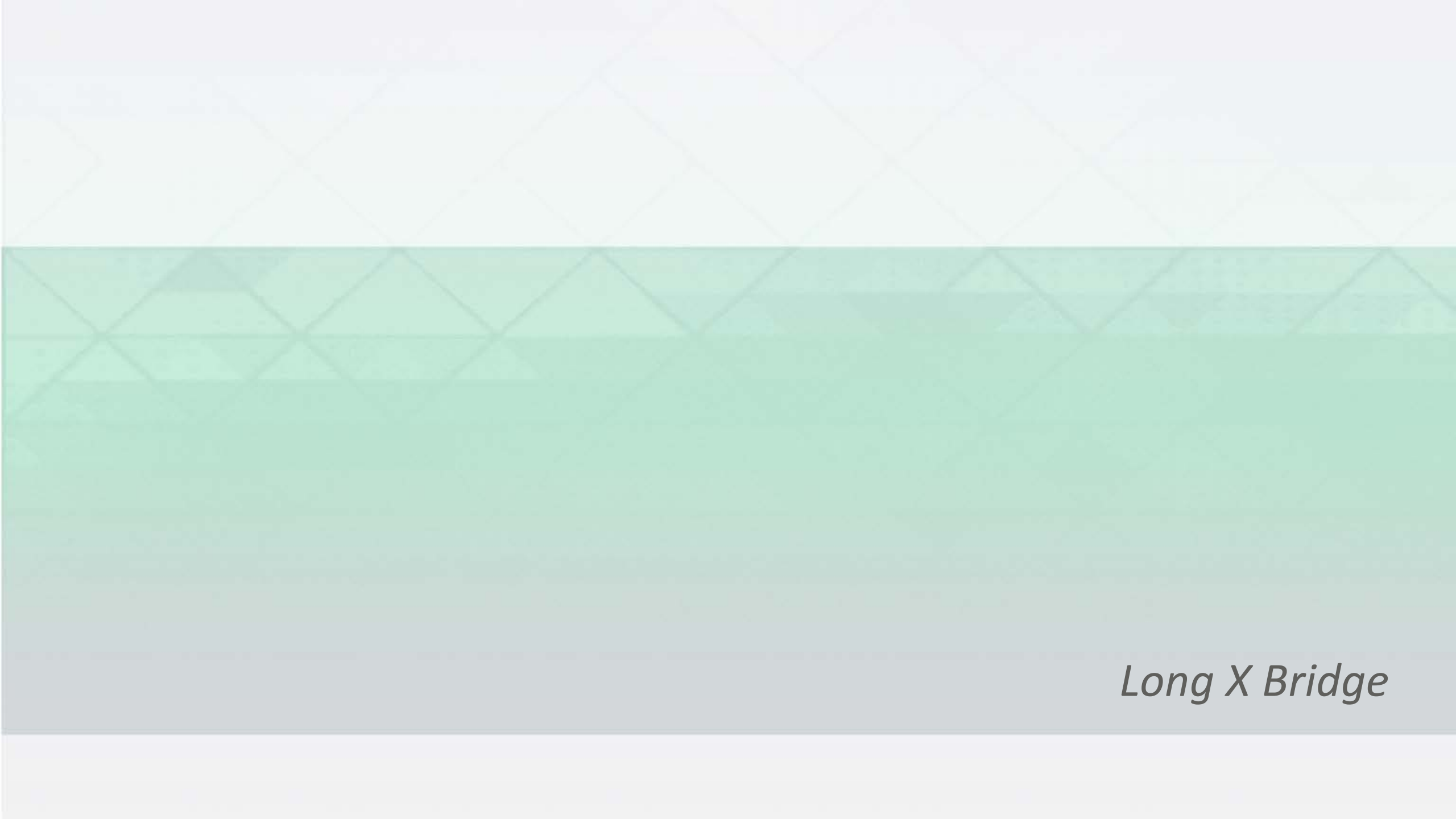




# WILDLIFE CROSSING SYSTEM

*Wildlife Fencing with Jump-out*





*Long X Bridge*



# LONG X BRIDGE OPTION LX-3: REMOVE & REPLACE EXISTING BRIDGE WITH NEW FOUR-LANE BRIDGE

*Simulation*





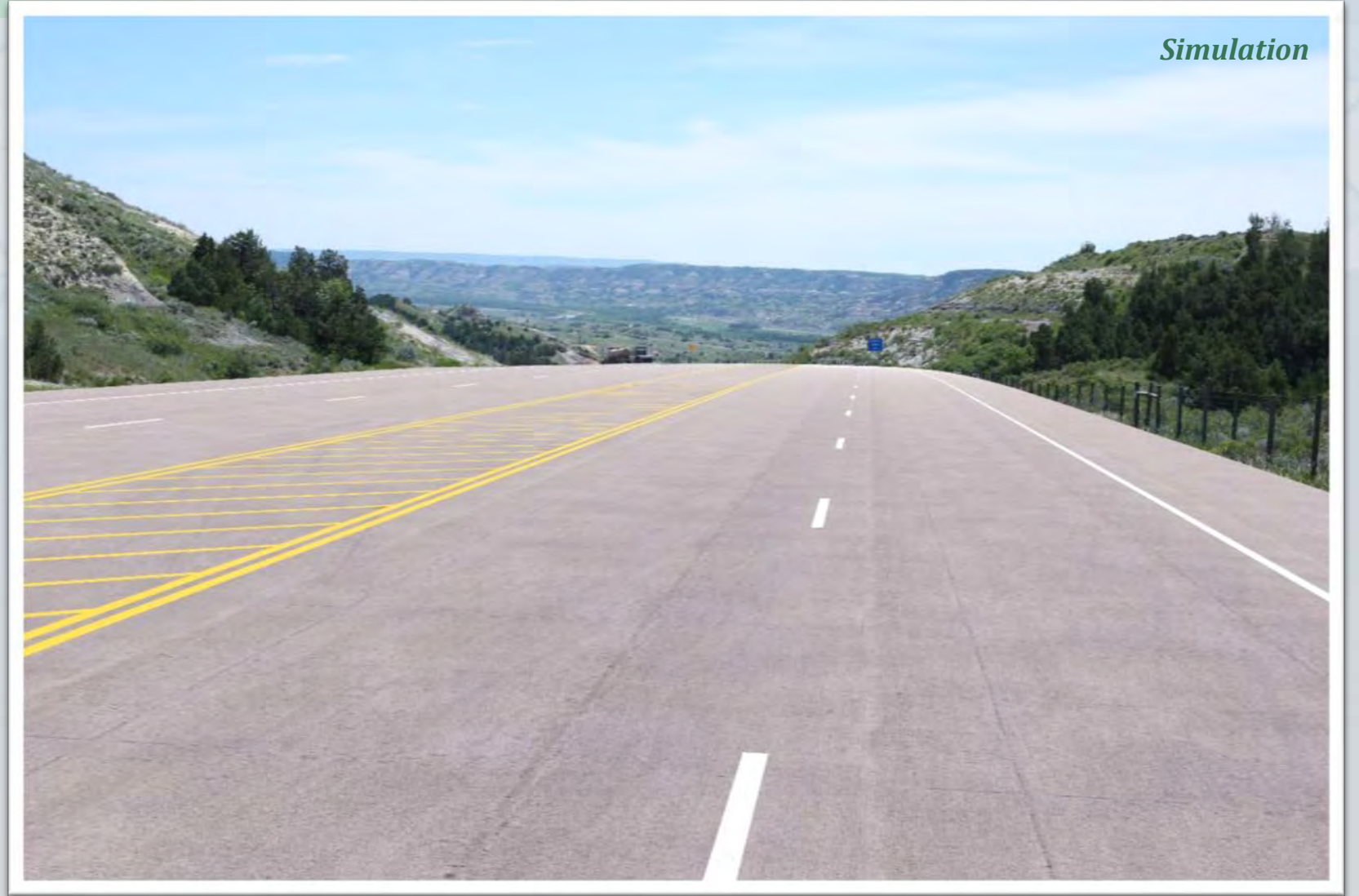
# LONG X BRIDGE OPTION LX-3: REMOVE & REPLACE EXISTING BRIDGE WITH NEW FOUR-LANE BRIDGE

*Existing*

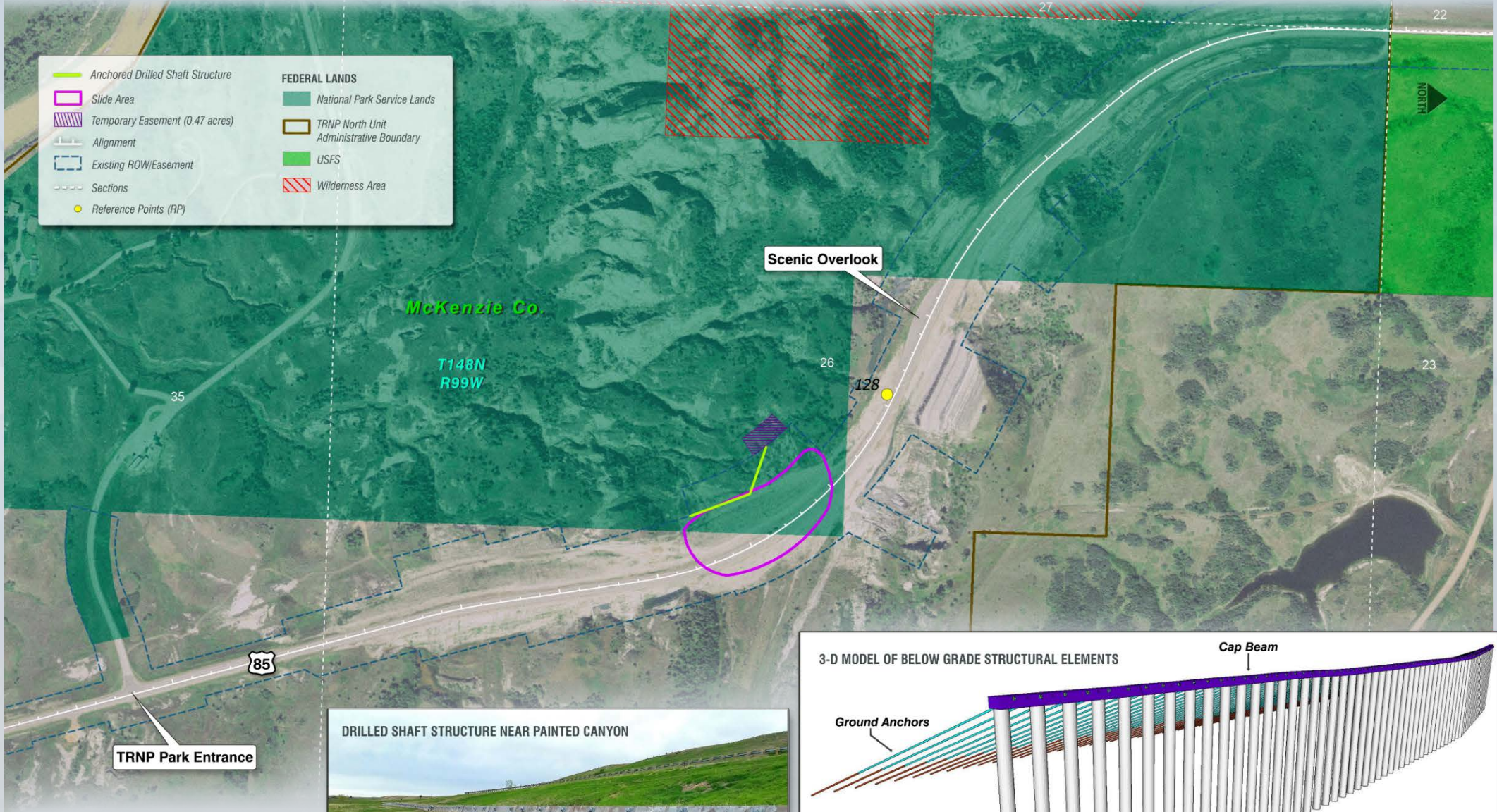




# FOUR-LANE DIVIDED HIGHWAY WITH FLUSH, 12-FOOT-WIDE MEDIAN







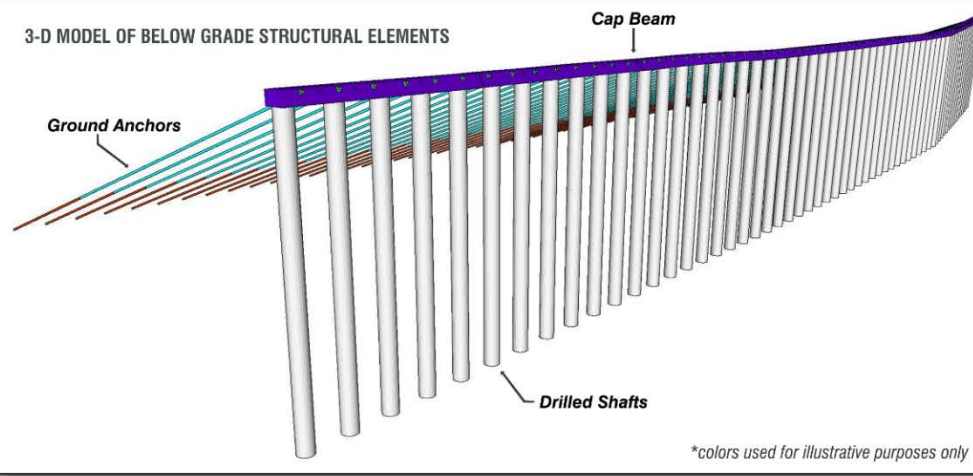
McKenzie Co.

T148N  
R99W

Scenic Overlook

TRNP Park Entrance

85

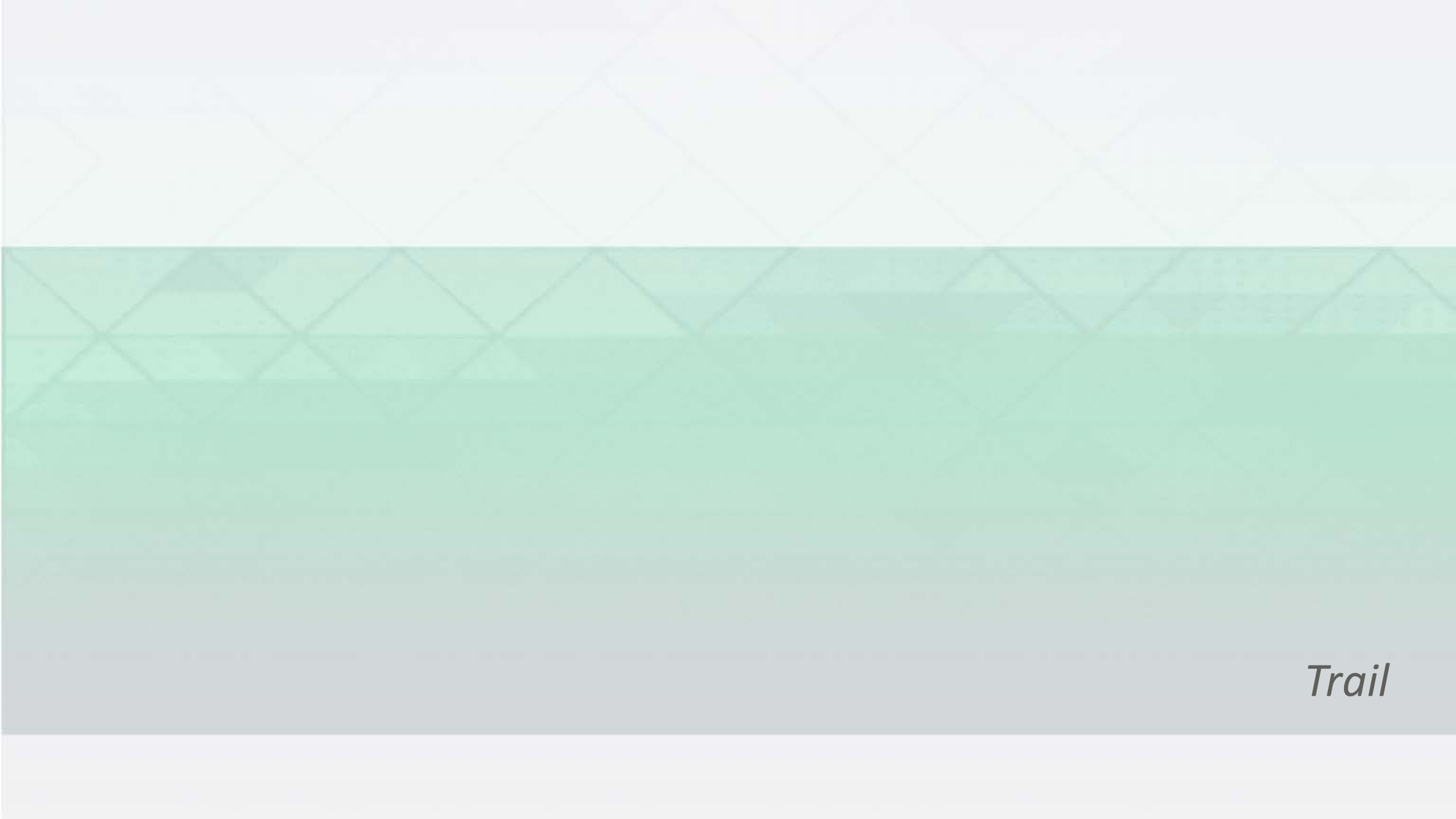


\*colors used for illustrative purposes only



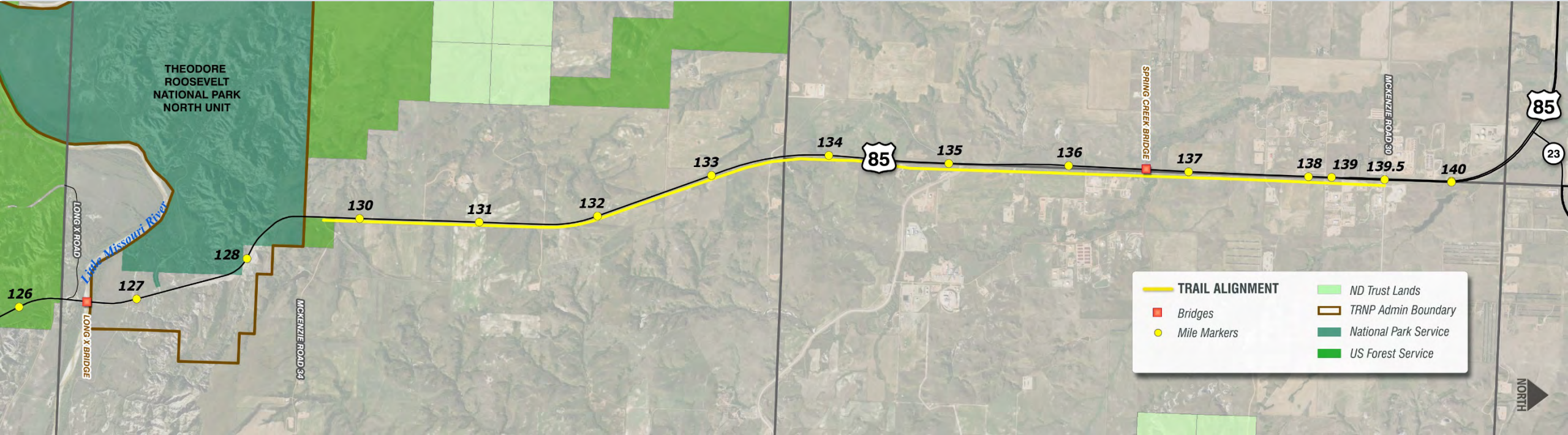
# HORSESHOE BEND LANDSLIDE MITIGATION





*Trail*

# TRAIL ALIGNMENT





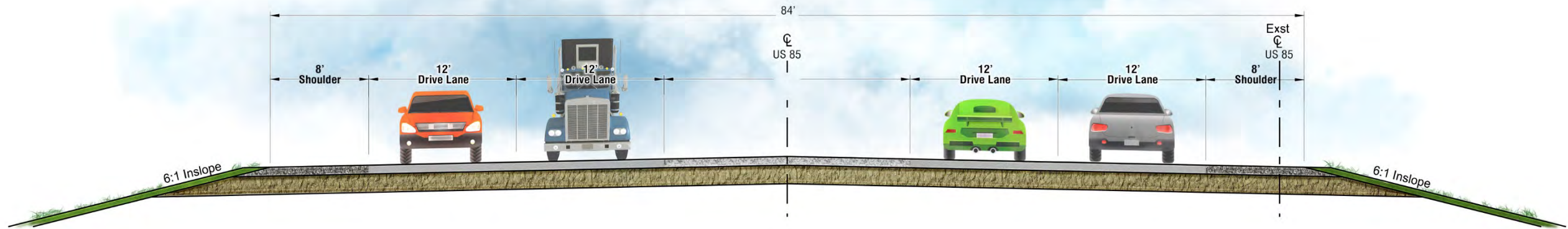
# TRAIL TYPICAL SECTION

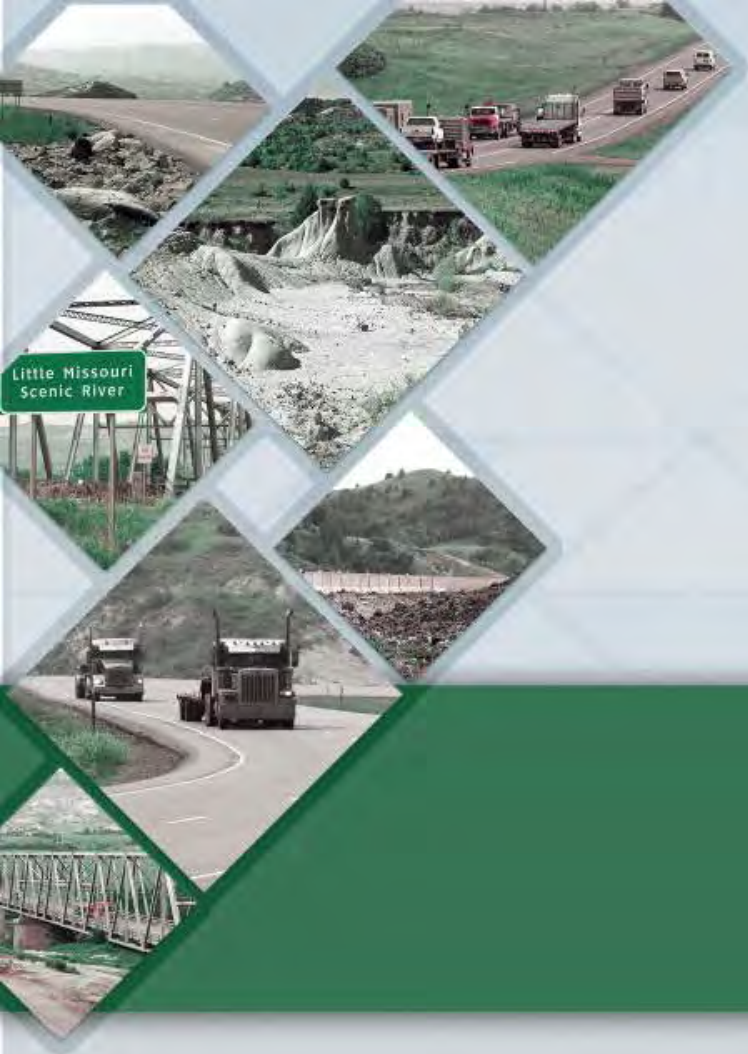


*Roadway Section Near Watford City*



# OFFSET FOUR-LANE DIVIDED HIGHWAY WITH FLUSH, 20-FOOT-WIDE MEDIAN





# Impacts



# LAND USE

## *Permanent ROW/Easement on Private and Federal Lands*

Alternative/Option	Permanent ROW Required – Private (acres)	Permanent Easement Required – Federal (acres)		Total (acres)
		USFS	NPS	
<b>Alternative B</b>	761.1	73.6	9.4*	<b>844.1</b>
<b>Option FF-1</b>	20.6	—	—	<b>20.6</b>
<b>Option INT-1</b>	2.6	—	—	<b>2.6</b>
<b>Option LX-3</b>	9.4	1.7	—	<b>11.1</b>
<b>TOTAL</b>	<b>793.7</b>	<b>75.3</b>	<b>9.4</b>	<b>878.4</b>

*\*A new Highway Easement Deed would be issued for the same 9.4-acre area as the existing Deed, plus an additional 0.2 acres impacted by a recent, unrelated, landslide repair project (9.6-acre total).*

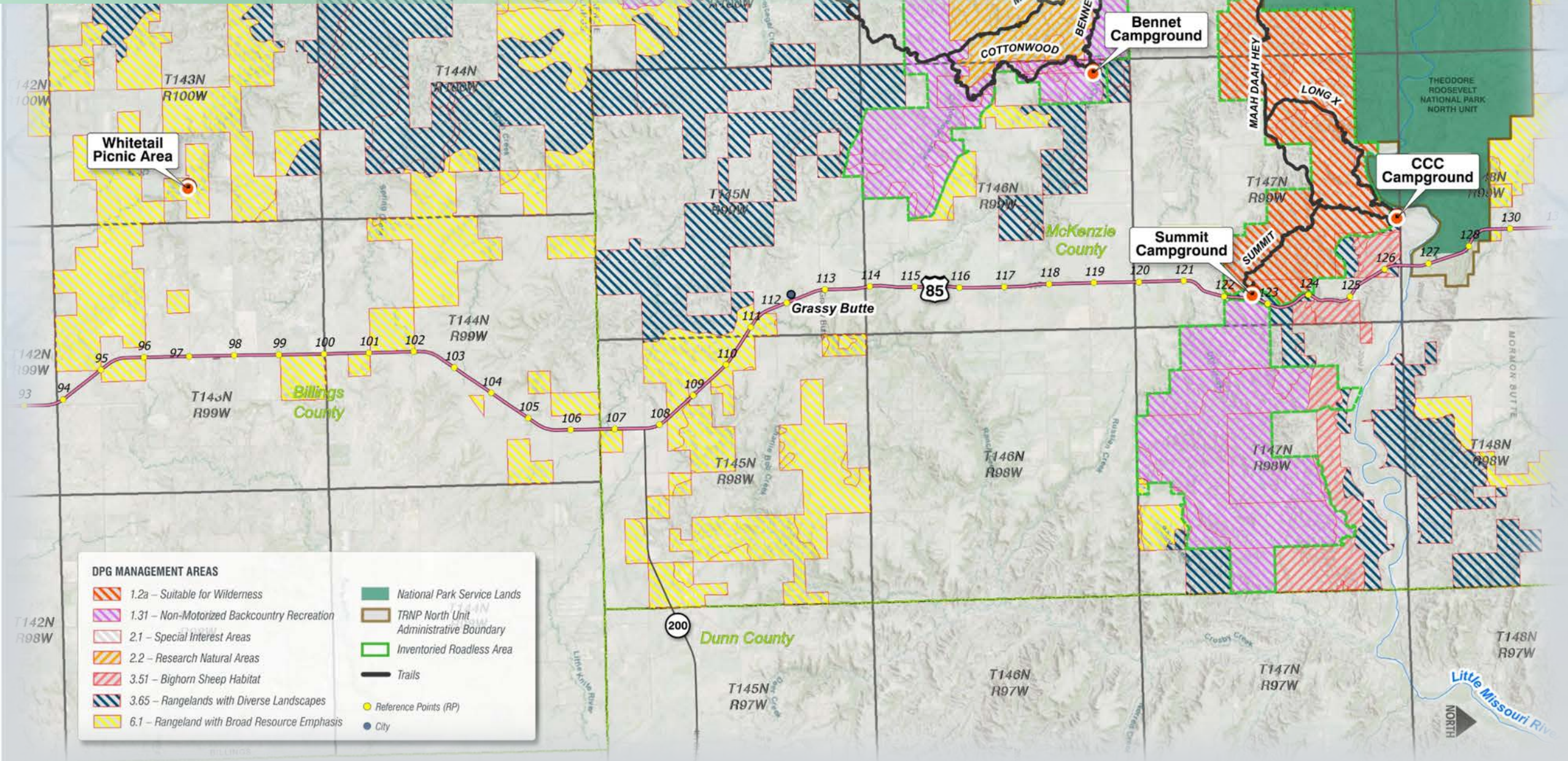
# SOCIAL

- › Communities
- › Emergency Services
- › Recreation
- › Construction





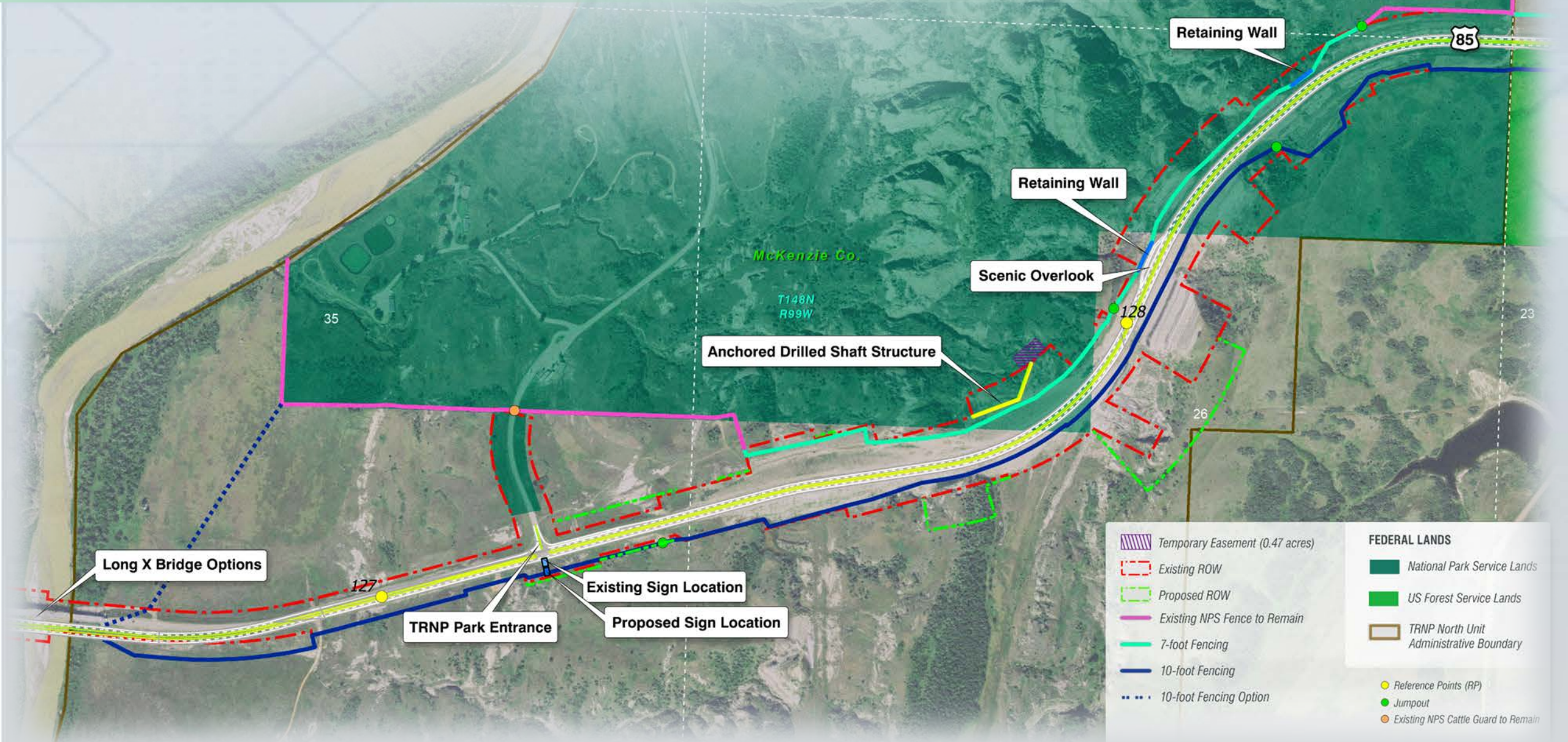
# PUBLIC LANDS USFS-MANAGED LANDS








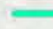









# PUBLIC LANDS

## NPS-MANAGED LANDS



 Temporary Easement (0.47 acres)	<b>FEDERAL LANDS</b>
 Existing ROW	 National Park Service Lands
 Proposed ROW	 US Forest Service Lands
 Existing NPS Fence to Remain	 TRNP North Unit Administrative Boundary
 7-foot Fencing	 Reference Points (RP)
 10-foot Fencing	 Jumpout
 10-foot Fencing Option	 Existing NPS Cattle Guard to Remain



# TRNP – NORTH UNIT IMPACTS/COMMITMENTS

## › Noise

- › Traffic Noise Analysis
- › SPreAD Analysis
- › Quiet Pavement Assessment

## › Visual

- › Visual Assessment



## › Commitments

- › Access would be maintained
- › Regular construction activities – 8 am-10 pm (central time)
- › Pile driving activities – 8 am-7 pm (central time)
- › Long-term lighting will be downcast and shielded
- › Visual screening along the western- and northern- most sides of the Long X Bridge staging areas
- › On USFS- and NPS-managed lands, construction equipment would be pressure washed and free of noxious weeds



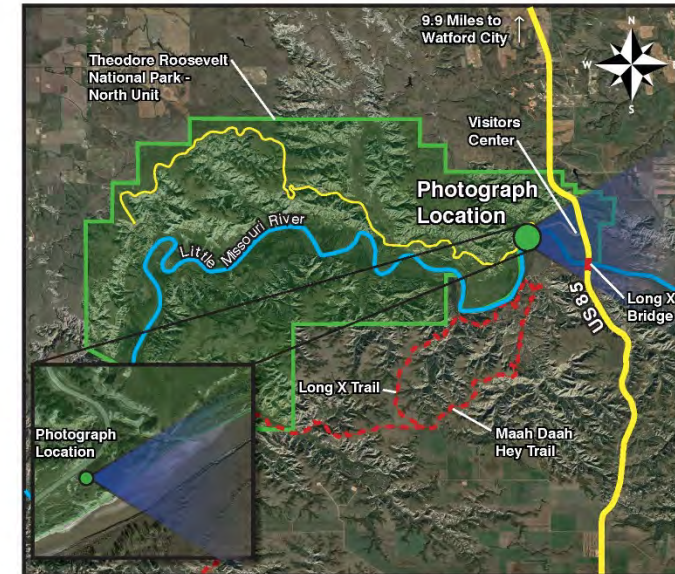
VISUAL



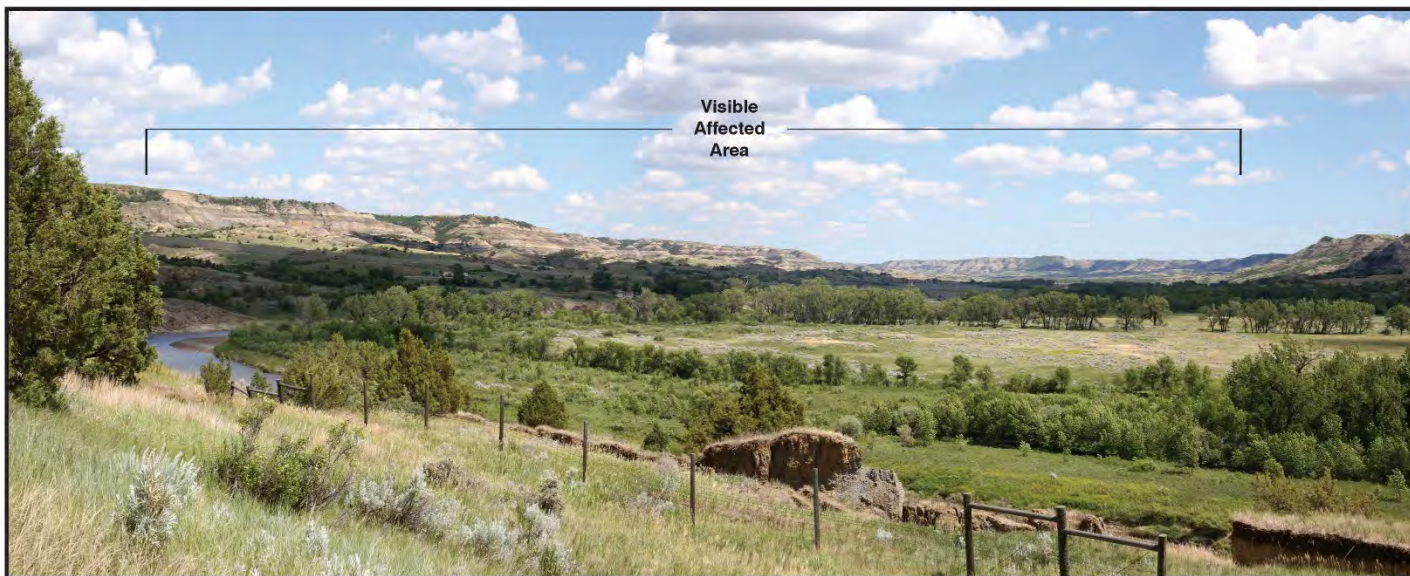




**Existing Condition** – View east from River Overlook within Theodore Roosevelt National Park - North Unit.



**Photograph Location:** Viewpoint is approximately 1.1 miles from US 85.



**Simulation** – Proposed is visible.



Site Conditions: Moderately Sunny  
Photo Date and Time: 6-15-17, 2:59 p.m. Focal Length: 50mm  
When printed on 11x17 inch paper, this simulation is meant to be viewed at a distance of 9.5 inches.  
3D models in this simulation were prepared based on preliminary engineering and may change based on final engineering and design.



# VISUAL

*Cut Section Characterized by Stratified Geological Layers (Maah Daah Hey Trail Vantage Point)*



*Large Flattened Slope and Wildlife Fencing (Temporary Visitor Center Vantage Point)*





# WATER RESOURCES

## *Wetland Impacts*

Wetland Impacts (acres)		Required Mitigation (acres)	
Temporary	Permanent	USACE	EO 11990*
23.64	27.73	12.97	6.56

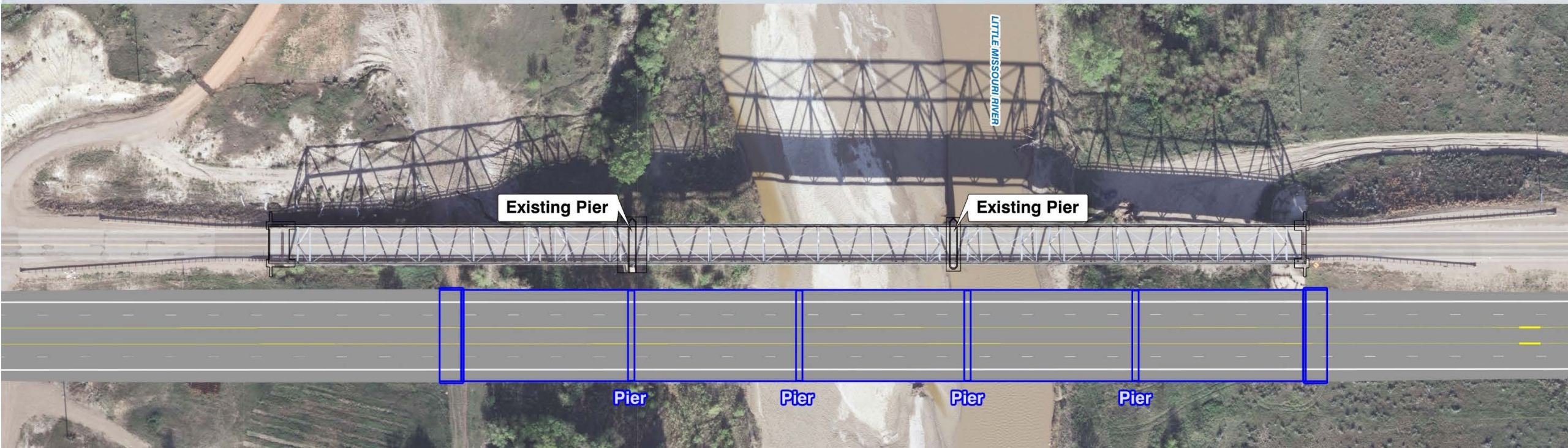
*\*Reflects required mitigation not already accounted for in USACE-required mitigation column.*

## *Other Waters Impacts*

Temporary Impact (linear feet)				Permanent Impact (linear feet)			
South Branch of the Green River	Spring Creek	Little Missouri River	Unnamed Tributary	South Branch of the Green River	Spring Creek	Little Missouri River	Unnamed Tributary
48	242	685	2,639	271	182	85	—

# WATER RESOURCES

## *Long X Bridge Pier Spacing*

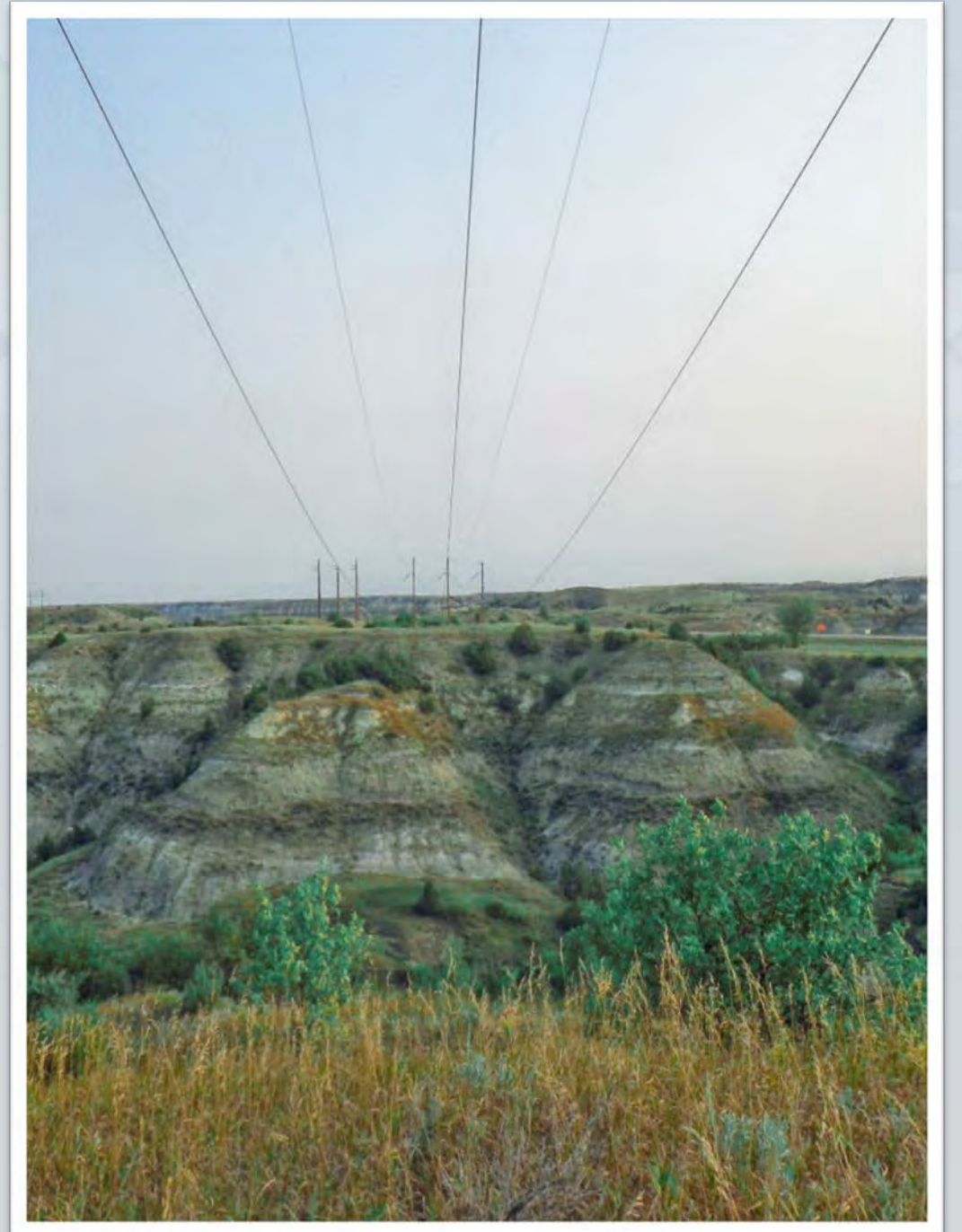




# UTILITIES

## *Utility Impacts*

Utility	Impact (miles)
Oil/Gas Pipelines	2.7
Communication Lines	88.6
Power Lines	7.0
Water Pipelines	21.9
<b>TOTAL</b>	<b>120.2</b>



# HISTORIC AND ARCHEOLOGICAL PRESERVATION

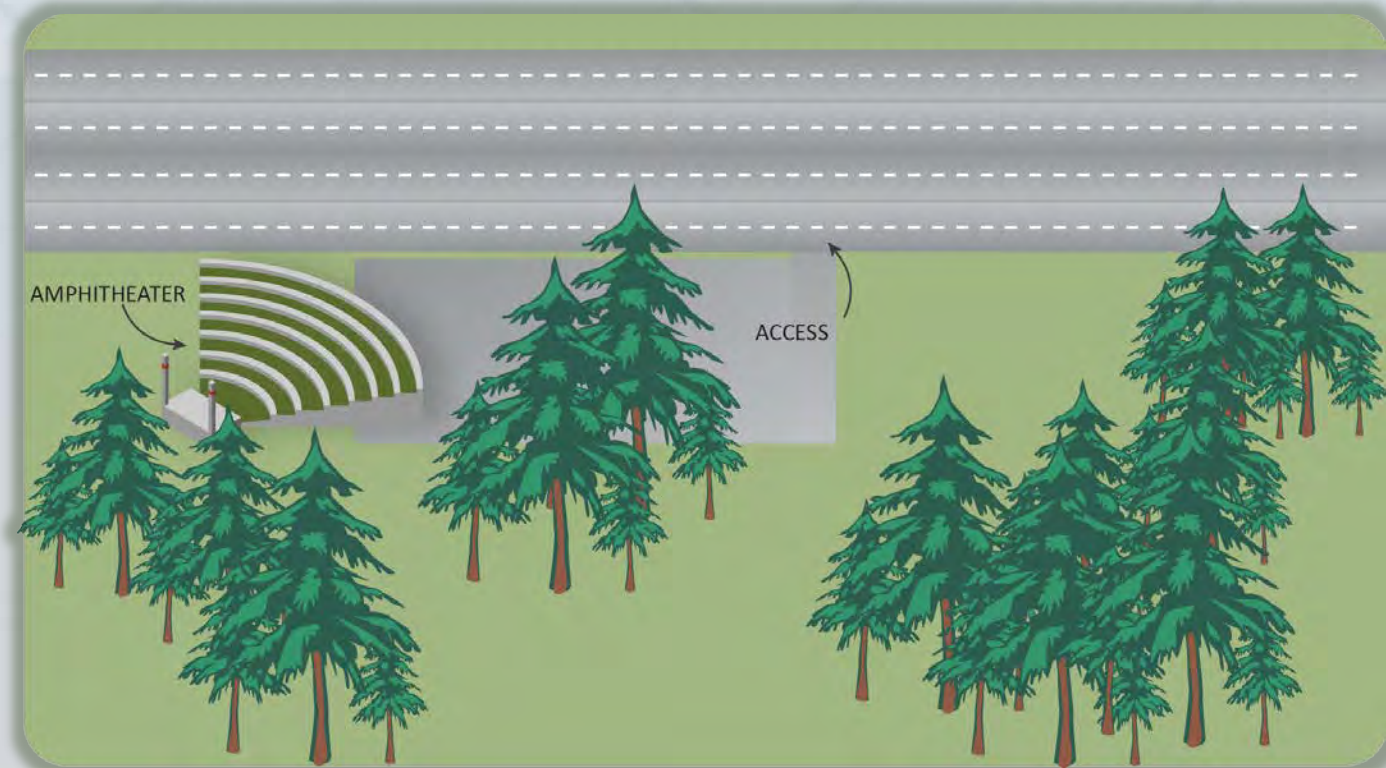
- › Dolyniuk Homestead: No Adverse Effect, after mitigation
- › Theodore Roosevelt National Park – North Unit Entry Sign: No Adverse Effect, after mitigation
- › Long X Bridge: Adverse Effect





# SECTION 4(F)

- › Use of land from publicly-owned parks, recreational areas, wildlife and waterfowl refuges or public and private historical sites
  - » No feasible and prudent avoidance alternative and includes all possible planning to minimize harm
  - » FHWA determines *de minimis* impact
- › Use
  - » Permanent
  - » Temporary
  - » Constructive



## SECTION 4(F) PROPERTIES THAT DID NOT MEET TEST OF 4(F)

- › MA 3.65—Rangelands with Diverse Natural-  
Appearing Landscapes
- › MA 6.1—Rangeland with Broad Resource  
Emphasis
- › NDDOT's existing easement with the USFS for  
US Highway 85
- › Privately owned  
property  
within the  
administrative  
boundary of TRNP
- › NDDOT's existing Highway Easement Deed  
with the NPS for US Highway 85
- › Scenic Overlooks
- › All archaeological sites *Not Eligible* for  
inclusion on the NRHP
- › St. Demetrius Ukrainian Catholic Church





# SECTION 4(F) PROPERTIES IDENTIFIED, NO USE

- › Summit Campground
- › Maah Daah Hey Trail
- › CCC Campground
- › St. Boniface Cemetery
- › St. Stanislaus Catholic Cemetery
- › St. Mary's Cemetery
- › Pre-historic CMS
- › Gregory Homestead
- › MA 1.31—Backcountry Recreation Non-Motorized
- › MA 3.51—Bighorn Sheep Habitat
- › MA 1.2a—Suitable for Wilderness



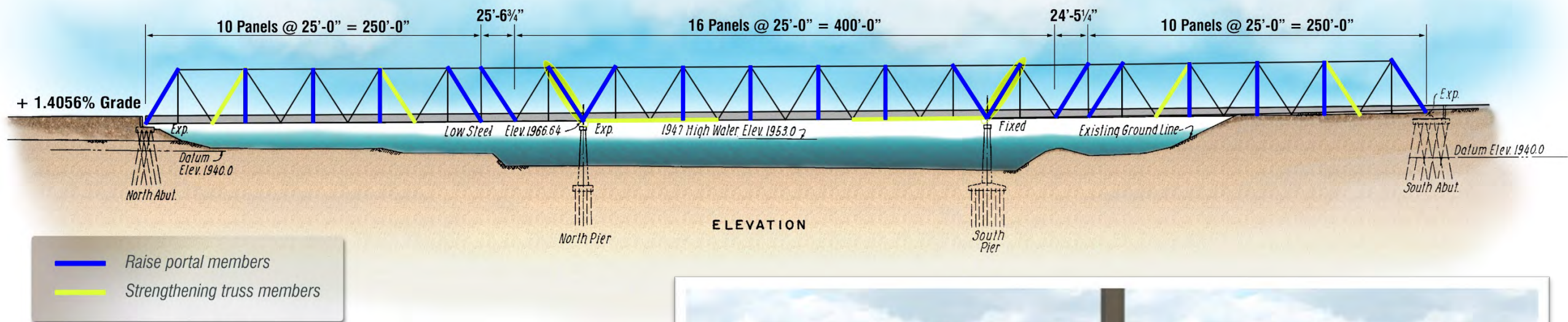
# SECTION 4(F)

## *Section 4(f) Uses and Approval Options*

Section 4(f) Property	Section 4(f) Use	Section 4(f) Approval Option
<b>NPS-managed Lands</b>	Temporary Occupancy— 0.5 acres	Exception for Temporary Occupancy
<b>TRNP – North Unit Entry Sign</b>	Relocation of Sign— <i>No Adverse Effect</i>	<i>De minimis</i> impact determination
<b>Long X Bridge</b>	Permanent— <i>Adverse Effect</i>	Nationwide Section 4(f) Programmatic Evaluation for Historic Bridges
<b>Dolyniuk Homestead</b>	Permanent— <i>No Adverse Effect</i>	<i>De minimis</i> impact determination



# LONG X BRIDGE



**Option LX-1: Scope of Rehabilitation**



**Raising the Portals**



# LONG X BRIDGE



*Long X Bridge collision*



*Skagit River Bridge failure caused by collision*



# LONG X BRIDGE

- › One or more segments available for adoption until June 14, 2018
- › NDDOT will fund disassembly of and transport one segment up to 100 miles
- › Preference given to public entities, must maintain bridge

## WARREN THROUGH-TRUSS BRIDGE AVAILABLE FOR ADOPTION MCKENZIE COUNTY, NORTH DAKOTA

The North Dakota Department of Transportation (NDDOT) is proposing the replacement of Bridge No. 85-126.262, the Long X Bridge. The Long X Bridge is Eligible for listing on the National Register of Historic Places. Therefore, the bridge must be made available for adoption prior to removal under the Bridge Adoption Program pursuant to 23 USC 144. The NDDOT is announcing that one or more segments of the historic Long X Bridge are currently available for adoption during a 30-day advertisement period ending June 14, 2018.

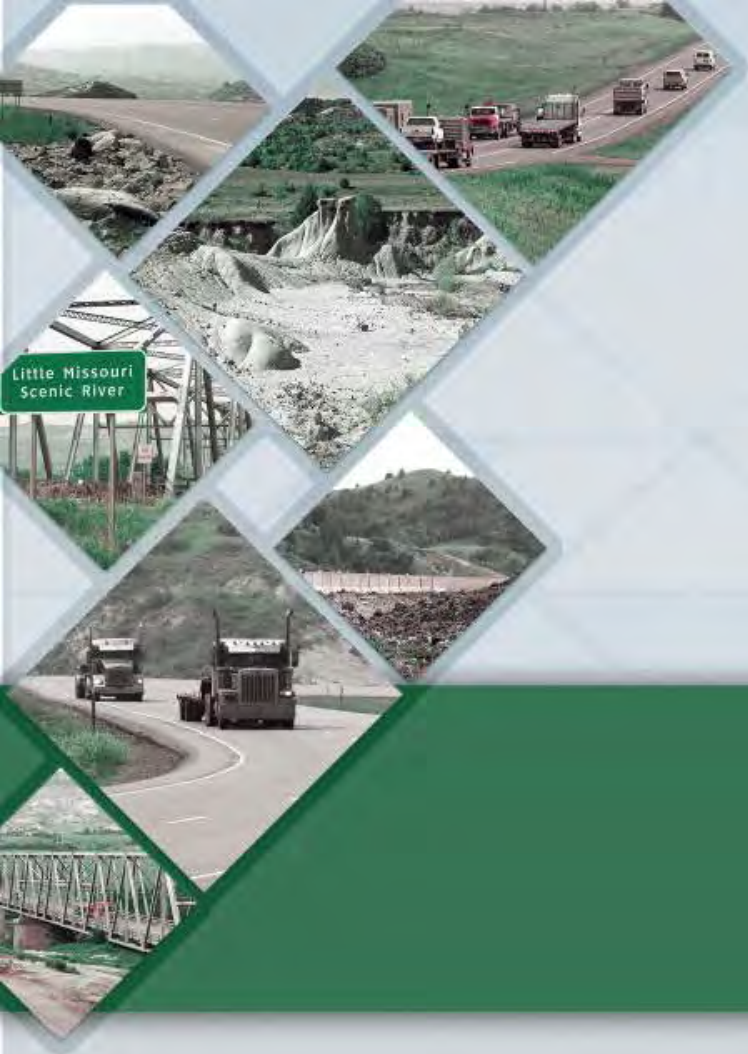
The Long X Bridge is located in McKenzie County along US Highway 85 over the Little Missouri River (approximately 15 miles south of Wadford City). The bridge is a cantilevered, sub-divided Warren through truss design that was constructed in 1959. The bridge has three spans, with a total length of 969 feet, a 30-foot roadway width and 16 feet of vertical clearance. There are two segments on either end of the bridge approximately 260 feet in length each, and one center segment approximately 450 feet in length.

The Long X Bridge is available to any responsible state, local or private agency willing to take ownership of, relocate and preserve the Long X Bridge in a new location (preference will be given to public entities). The adopting party would be responsible for maintaining the bridge segment(s) and would assume all future legal and financial responsibility associated with the bridge. In order to facilitate adoption, the NDDOT will fund the disassembly, loading and transport of one of the segments of the bridge within a 100-mile radius of its current location. The Long X Bridge is currently in use and would continue to be in service until a new bridge is constructed to replace it. Construction of the new bridge is anticipated to occur through 2020.

For more information, please contact the project manager or express interest in adoption by June 14, 2018.

Matt Linneman, Project Manager  
NDDOT  
300 Airport Road  
Bismarck, ND 58504-6005  
Phone: 701-328-6904  
Email: DOTUS85@nd.gov





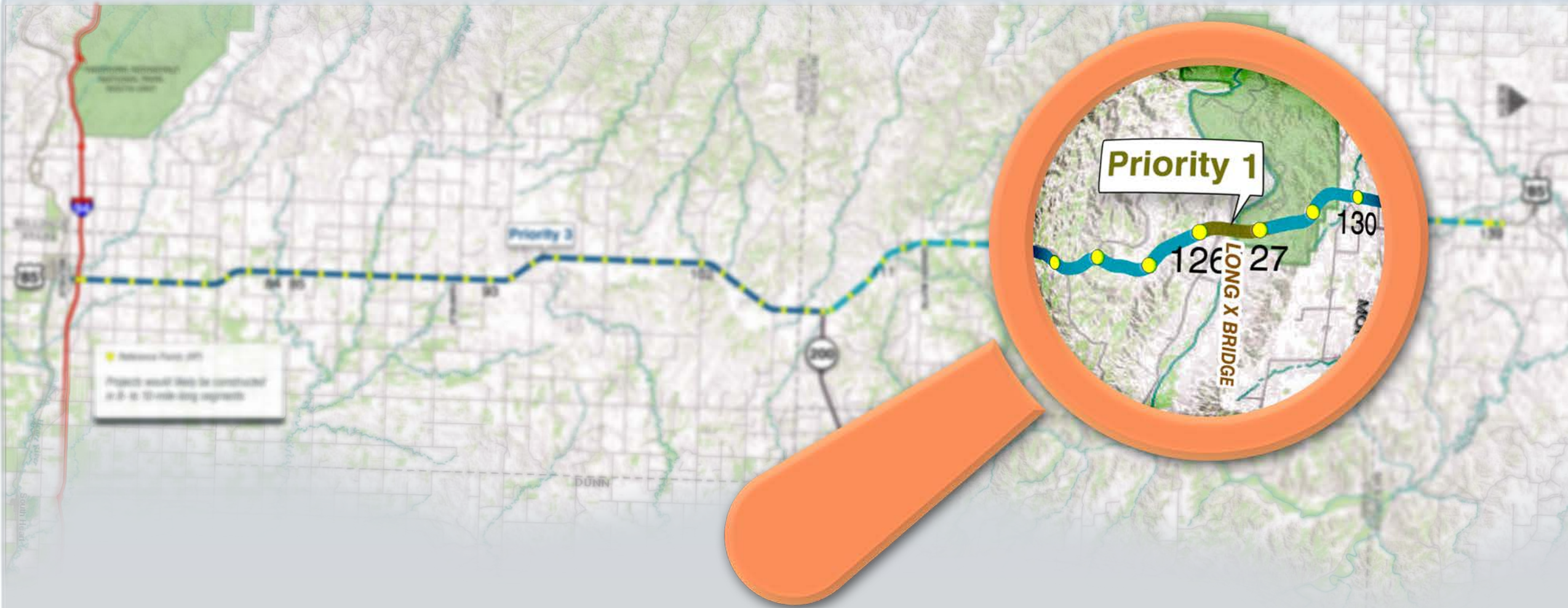
# Schedule & Next Steps



# ESTIMATED PROJECT COST

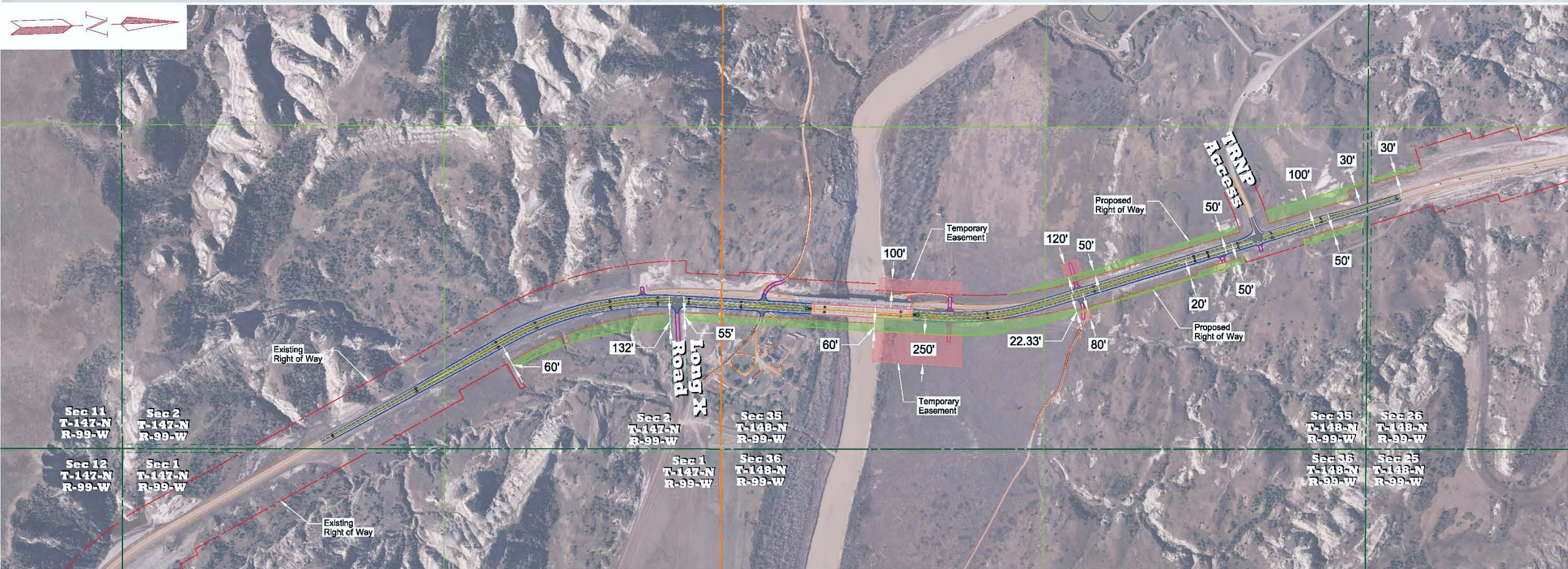
Project Component	Cost
Alternative B	\$419 million
Option FF-1	\$12 million
Option INT-2	\$4 million
Option LX-3	\$36 million
Trail	\$1 million
Wildlife Crossing System	\$7 million
<b>Total</b>	<b>\$479 million</b>

# ANTICIPATED CONSTRUCTION SCHEDULE





# LONG X BRIDGE REPLACEMENT PROJECT





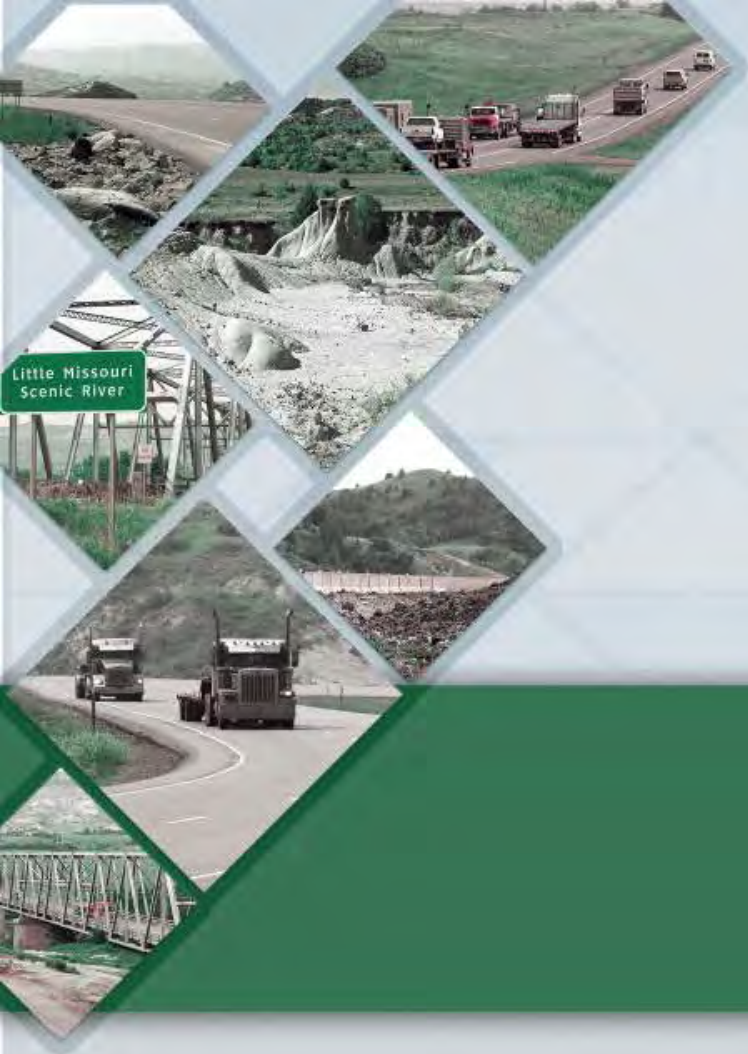
# NEXT STEPS



Maj  
Milestones

October 6, 2015	Notice of Intent
October 26, 2015	Invitation to Cooperating & Participating Agencies
November 9, 2015	Agency Scoping Meeting
November 9 & 10, 2015	Public Scoping Meetings
Winter 2015 to Early Spring 2016	Alternatives Method / Range of Alternatives
July 25 & 26, 2016	Alternatives Public Workshop
April/May 2018	Draft Environmental Impact Statement
May 2018	Public Hearings
Fall 2018	Final Environmental Impact Statement / Record of Decision





# Gather Input & Questions





# QUESTIONS & COMMENTS

## › Speaker Guidelines

- » State name
- » Describe issue or ask question
- » Be concise

Thank you for  
attending!

