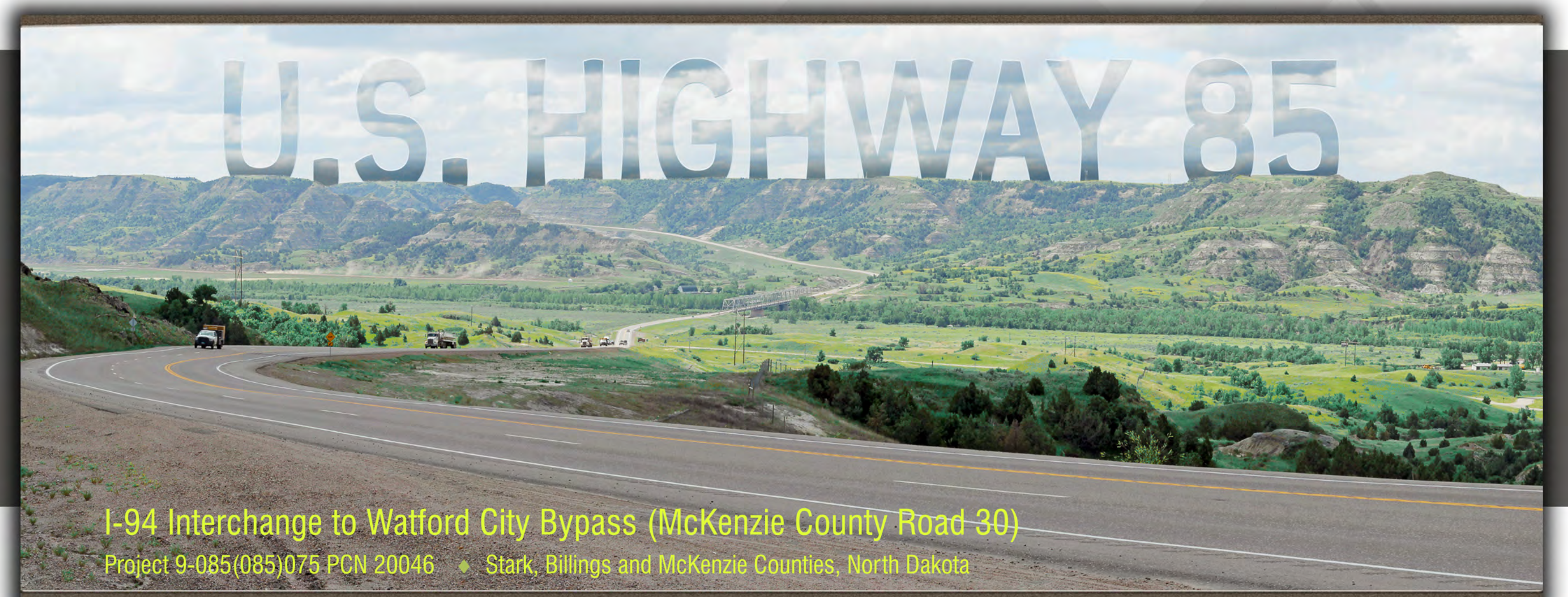
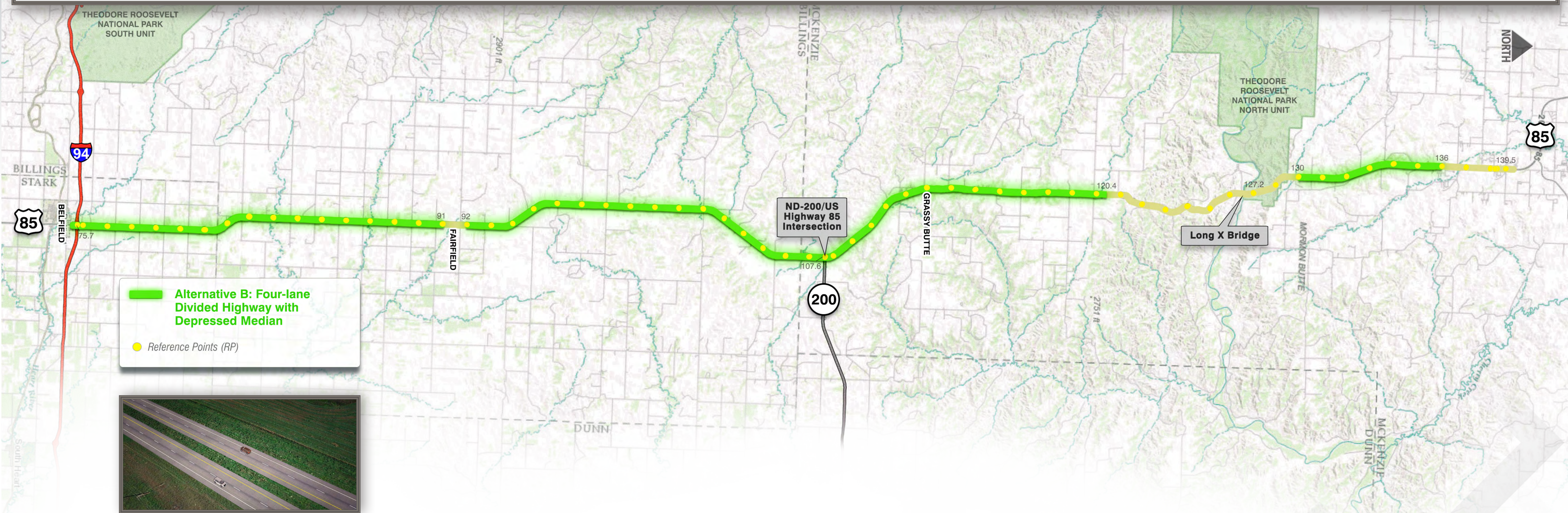
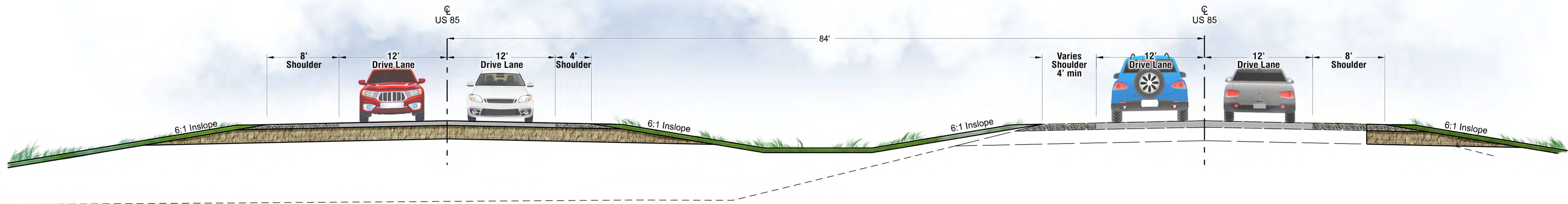


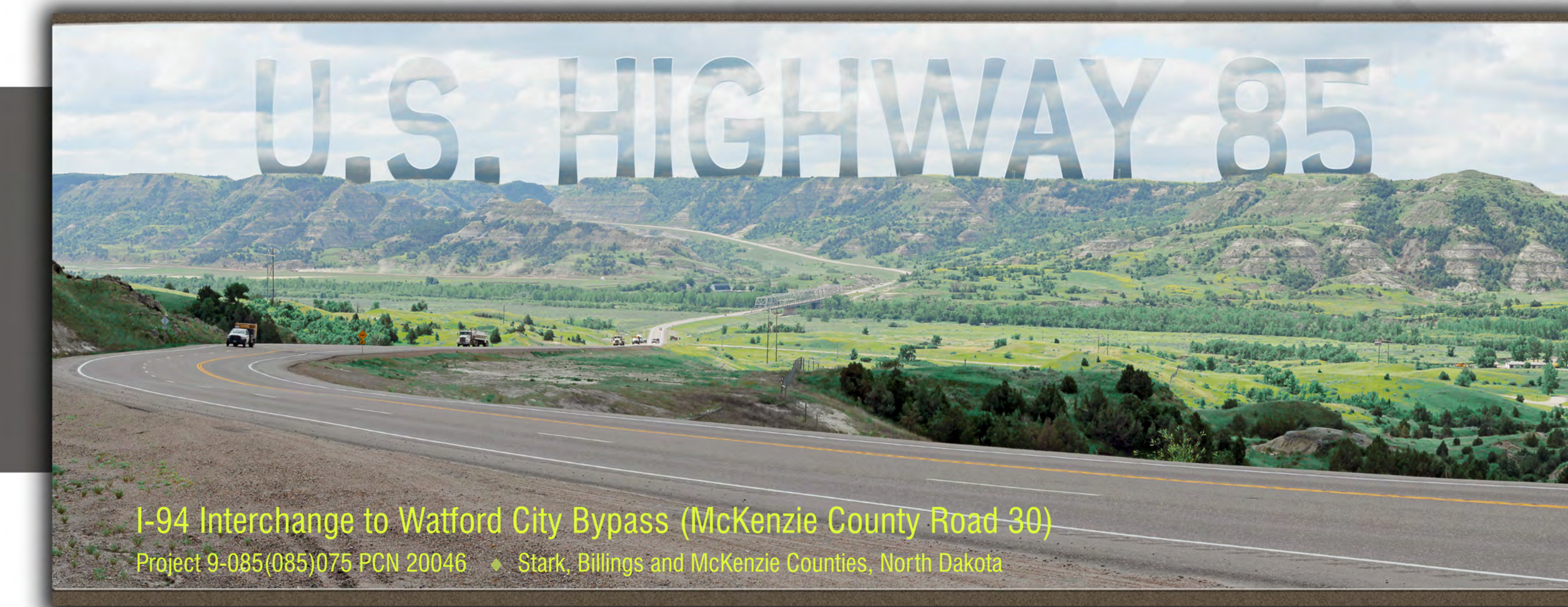
Preferred Alternative Overview



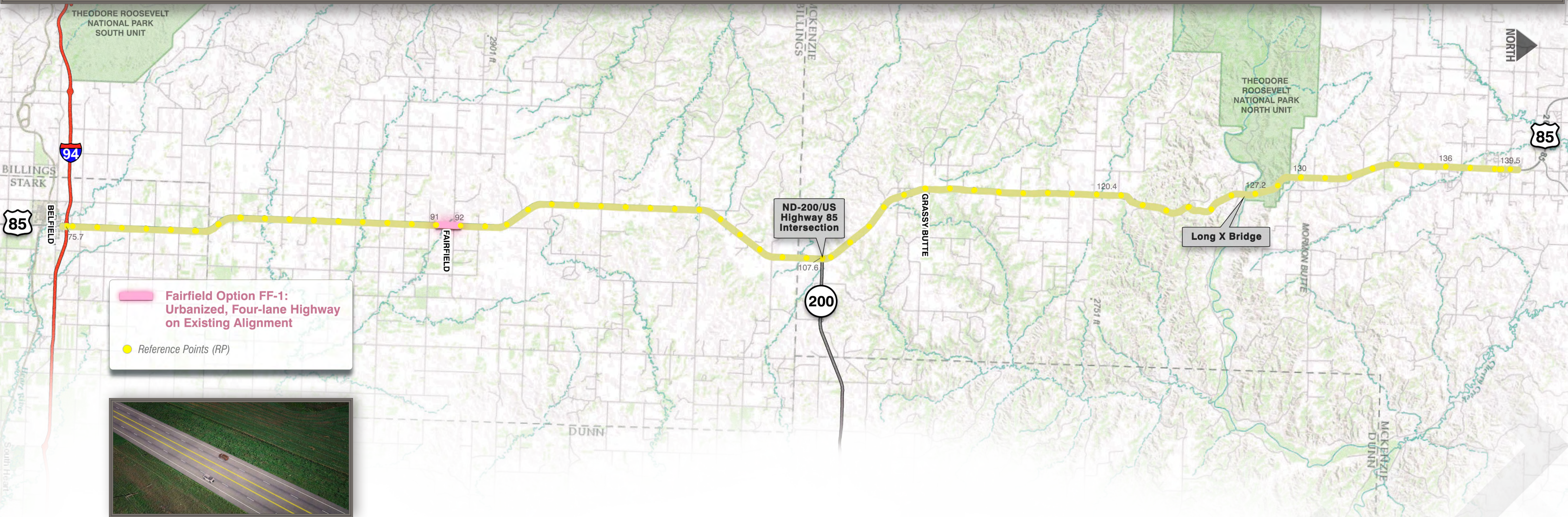
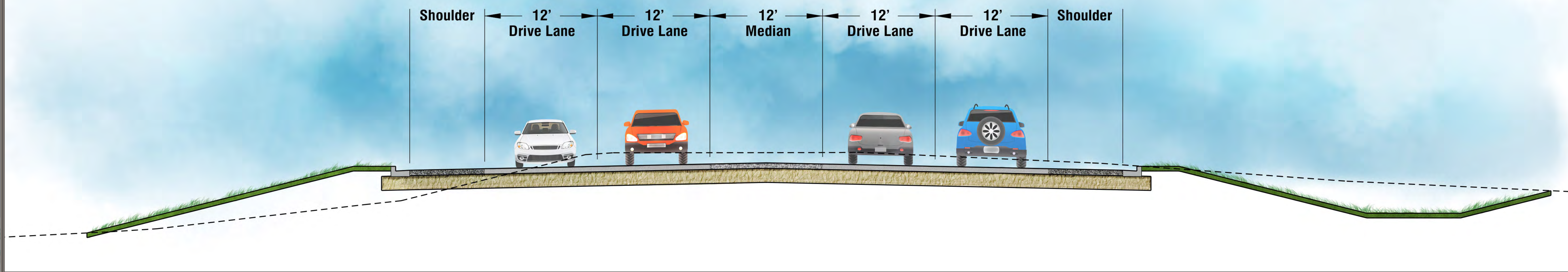
SPEED
LIMIT
70



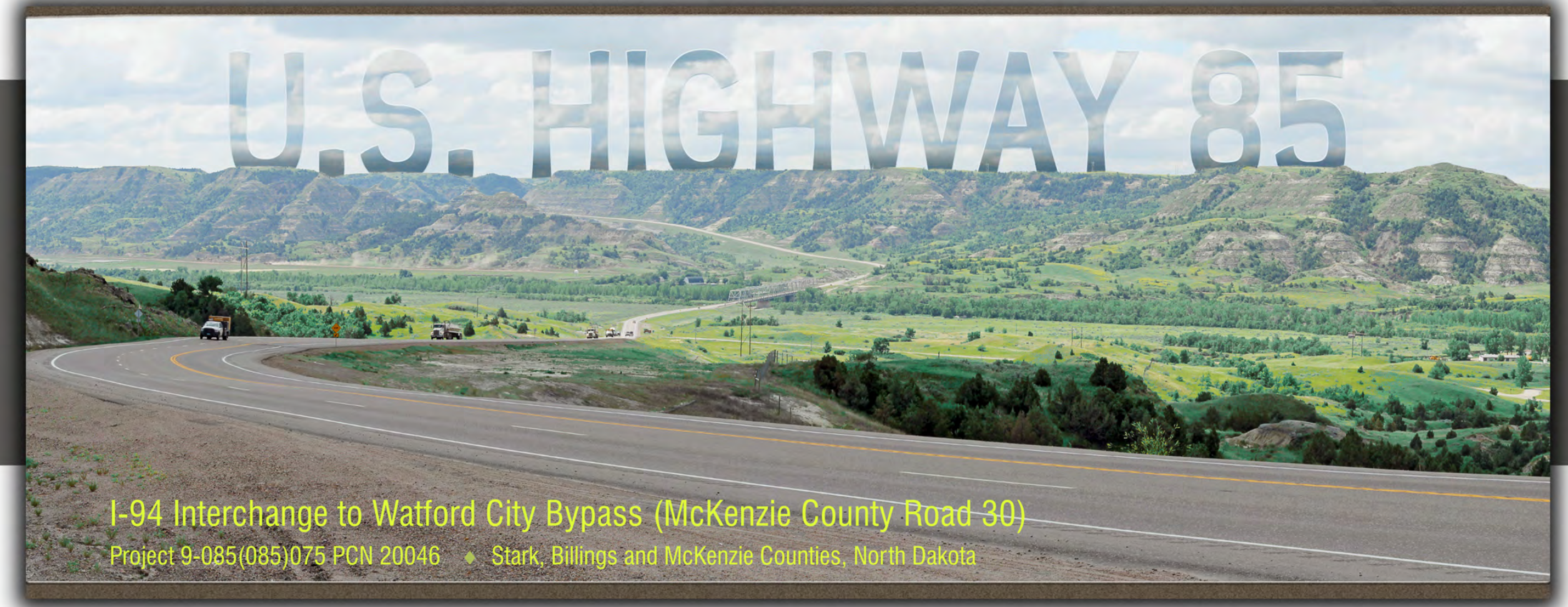
Alternative B: Four-lane Divided Highway with Depressed Median



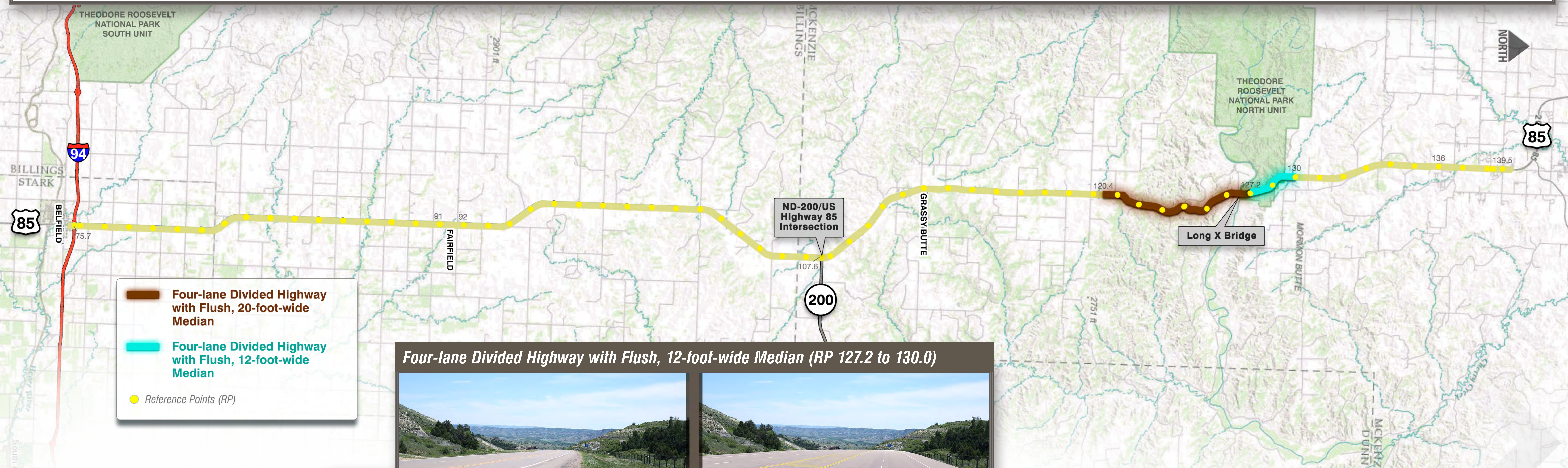
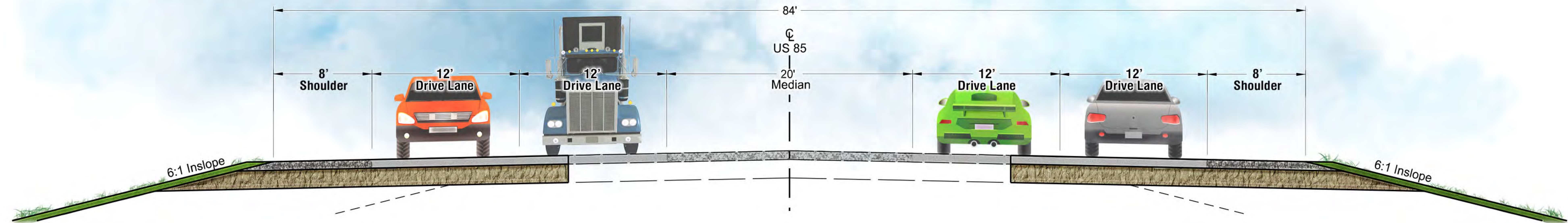
SPEED
LIMIT
45






Fairfield Option FF-1: Urbanized, Four-lane Highway on Existing Alignment (RP 91.4 to 91.9)



SPEED
LIMIT
65



-  Four-lane Divided Highway with Flush, 20-foot-wide Median
-  Four-lane Divided Highway with Flush, 12-foot-wide Median
-  Reference Points (RP)

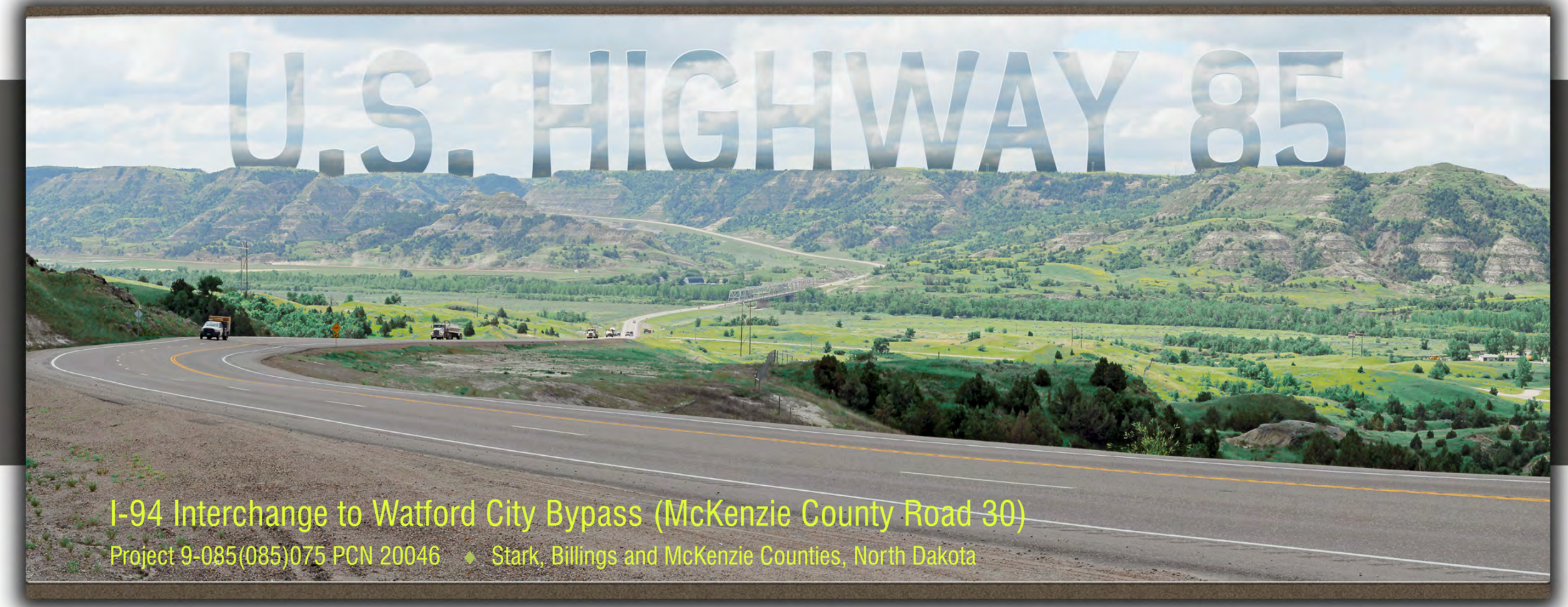
Four-lane Divided Highway with Flush, 12-foot-wide Median (RP 127.2 to 130.0)



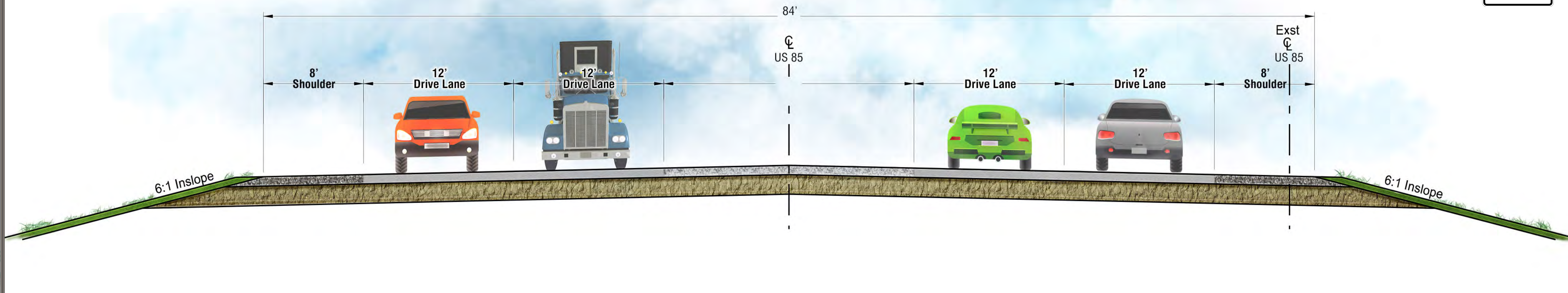
SPEED
LIMIT
60



Badlands: Four-lane Divided Highway, Flush



SPEED
LIMIT
65



THEODORE ROOSEVELT NATIONAL PARK SOUTH UNIT

BILLINGS STARK

THEODORE ROOSEVELT NATIONAL PARK NORTH UNIT

ND-200/US Highway 85 Intersection

GRASSY BUTTE

Long X Bridge

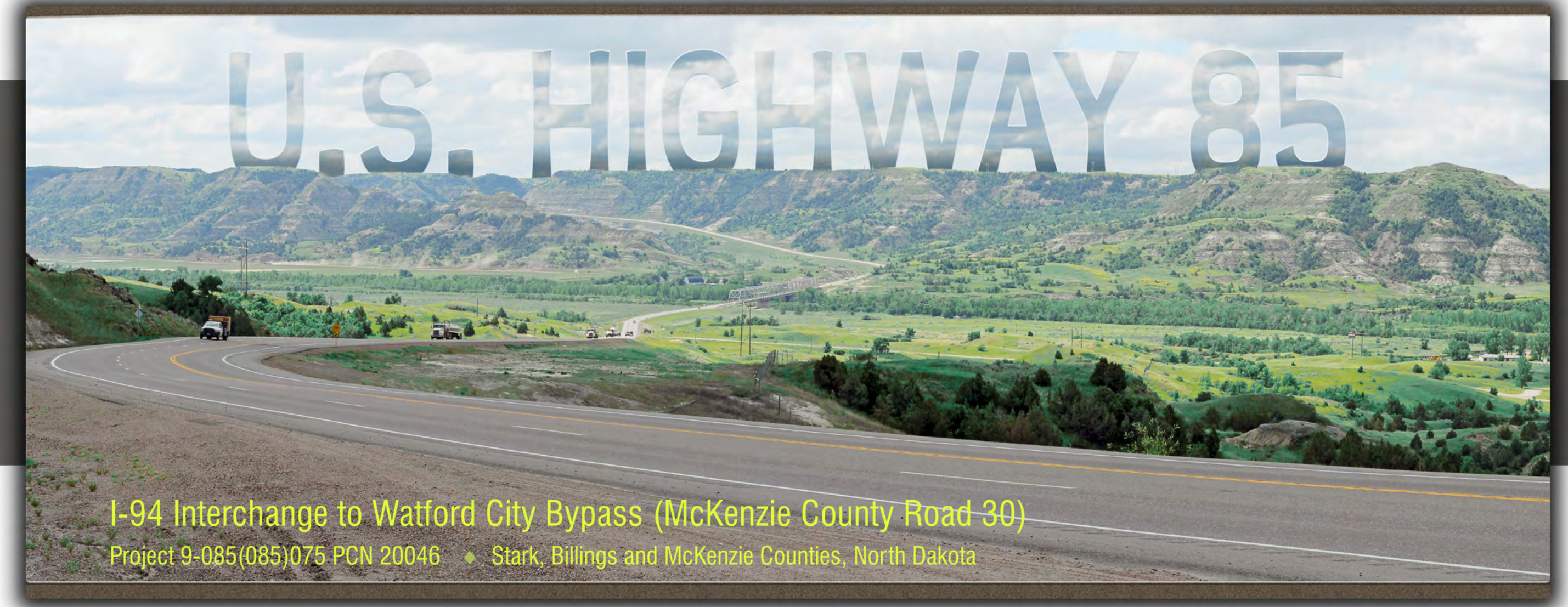
Reference Points (RP)

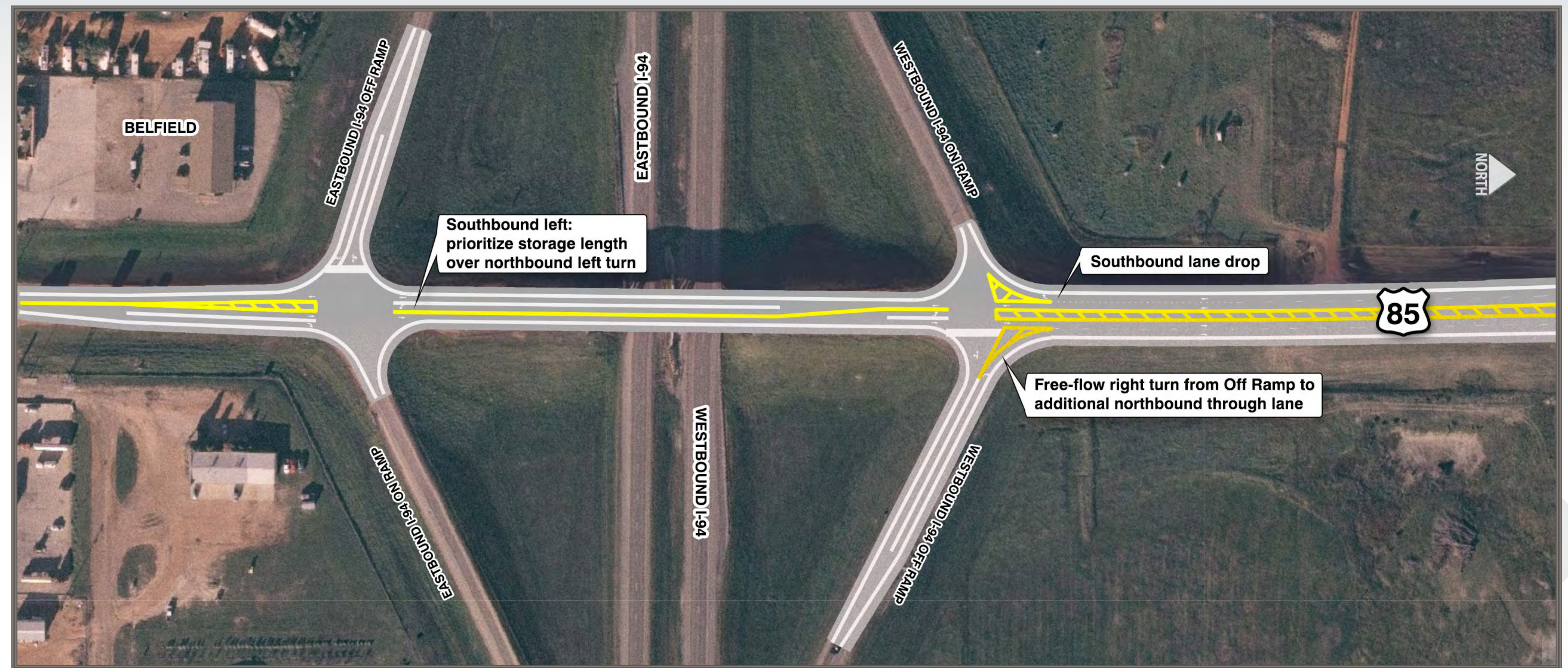
Offset Four-lane Divided Highway with Flush, 20-foot-wide Median

Map showing the proposed highway alignment (yellow line) through Watford City, North Dakota. The alignment starts near RP 75.7 and ends near RP 139.5. Key landmarks include the ND-200/US Highway 85 Intersection, Grassy Butte, and the Long X Bridge. The map also shows the Theodore Roosevelt National Park South and North Units, and the towns of Billings, Stark, and Dunn.

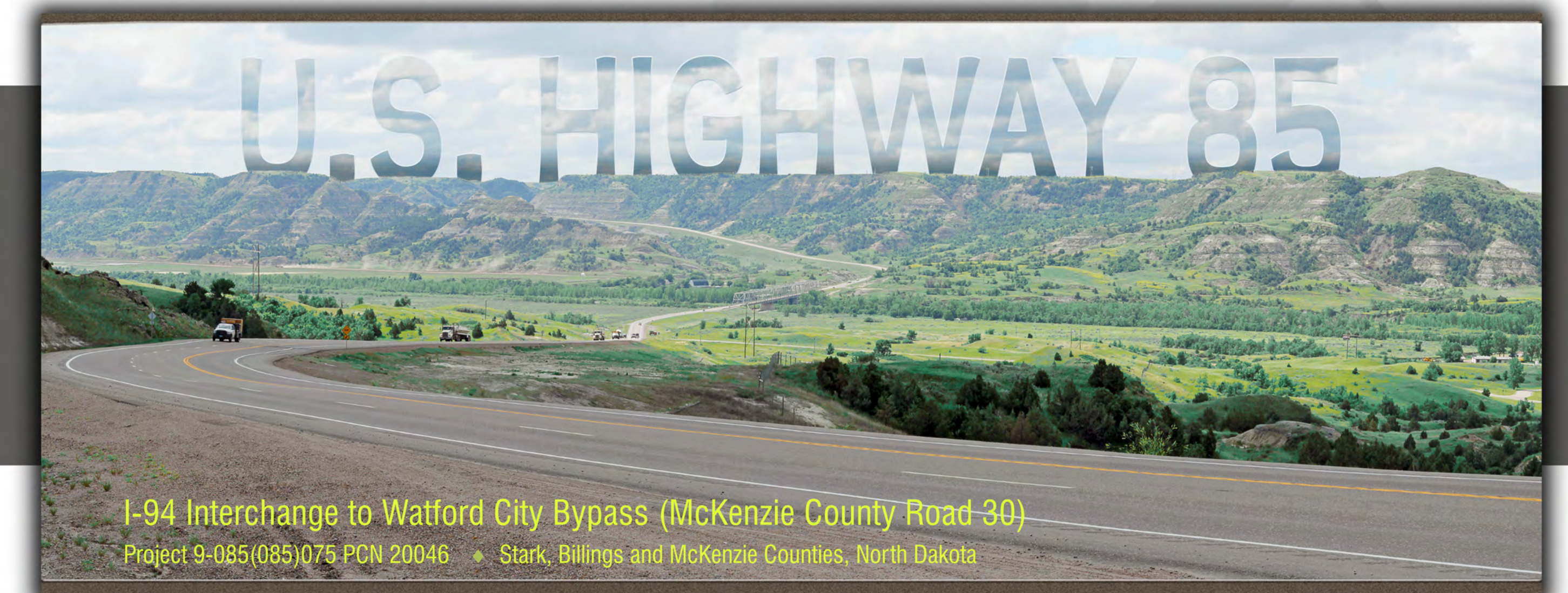


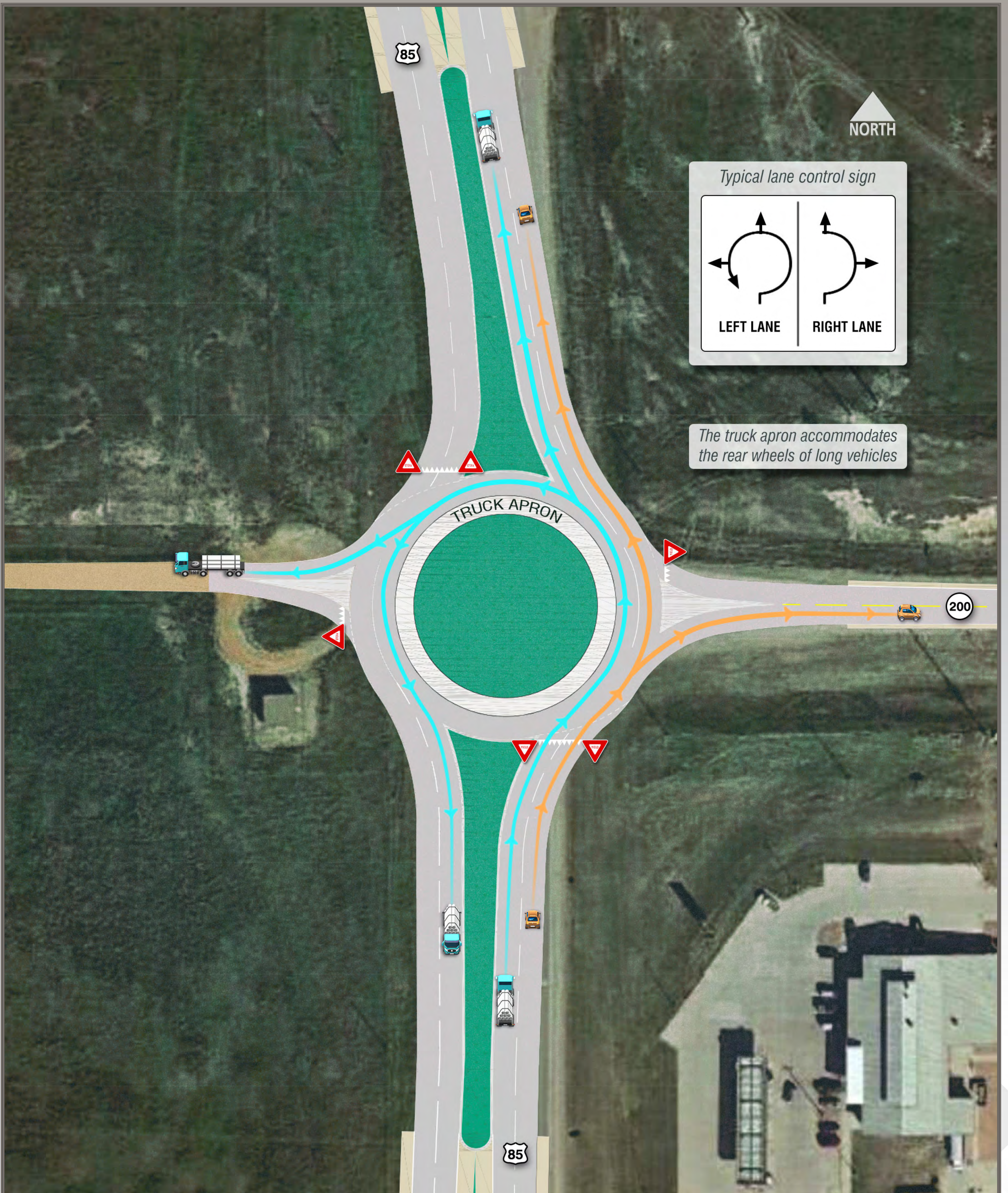
Watford City: Offset Four-lane Divided Highway with Flush, 20-foot-wide Median (RP 136.0 to 139.5)



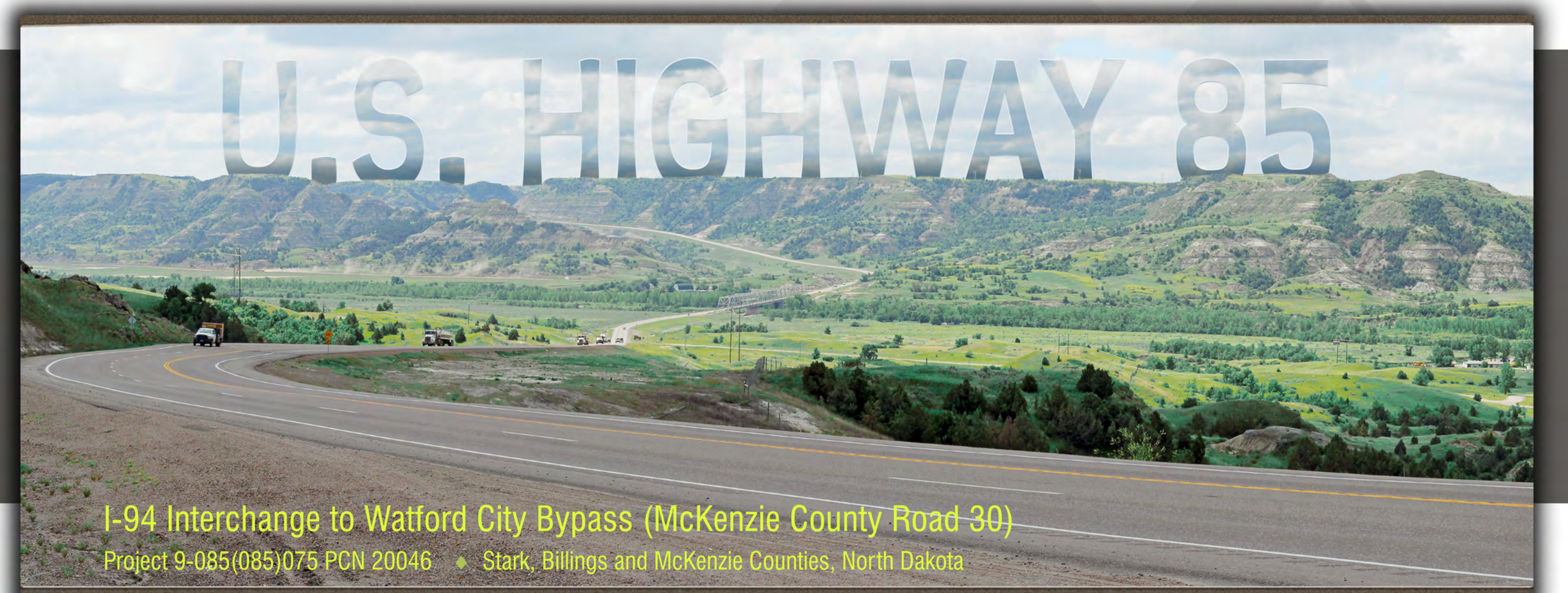


I-94 Interchange





ND-200/US Highway 85 Intersection Option INT-2: Multi-lane Roundabout





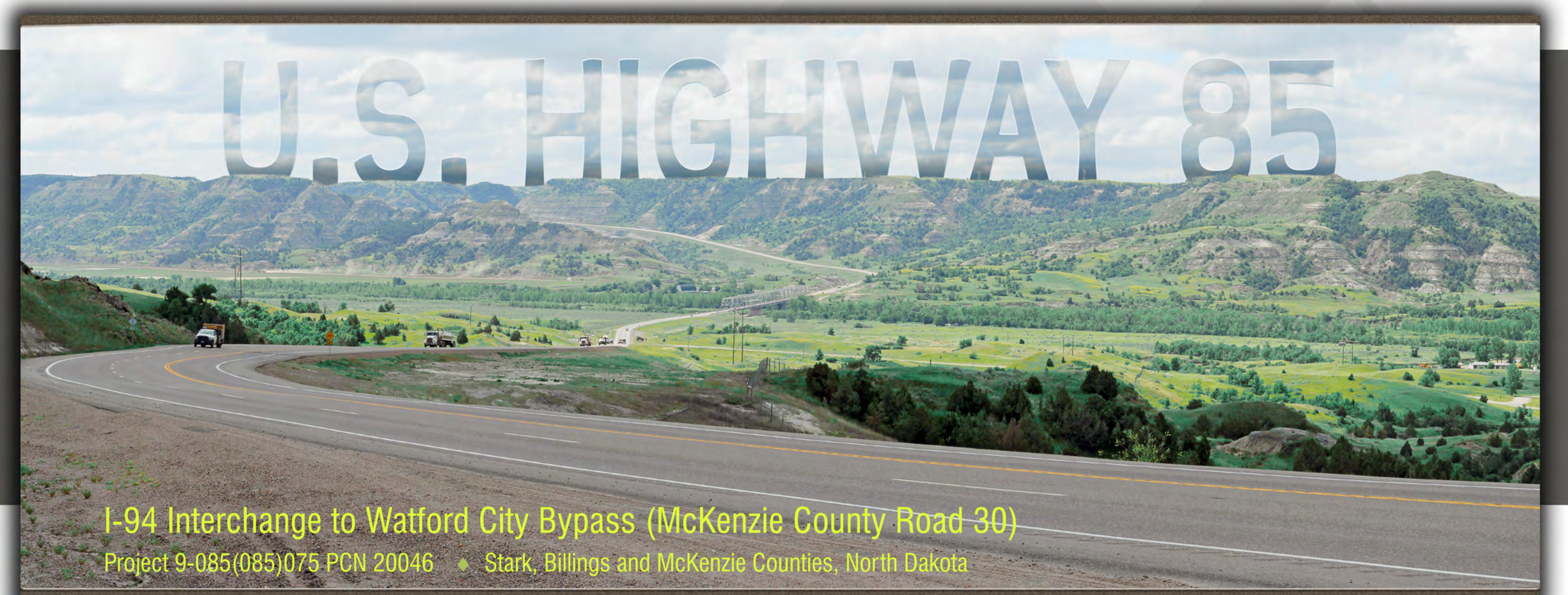
Aerial Simulation (looking northeast)

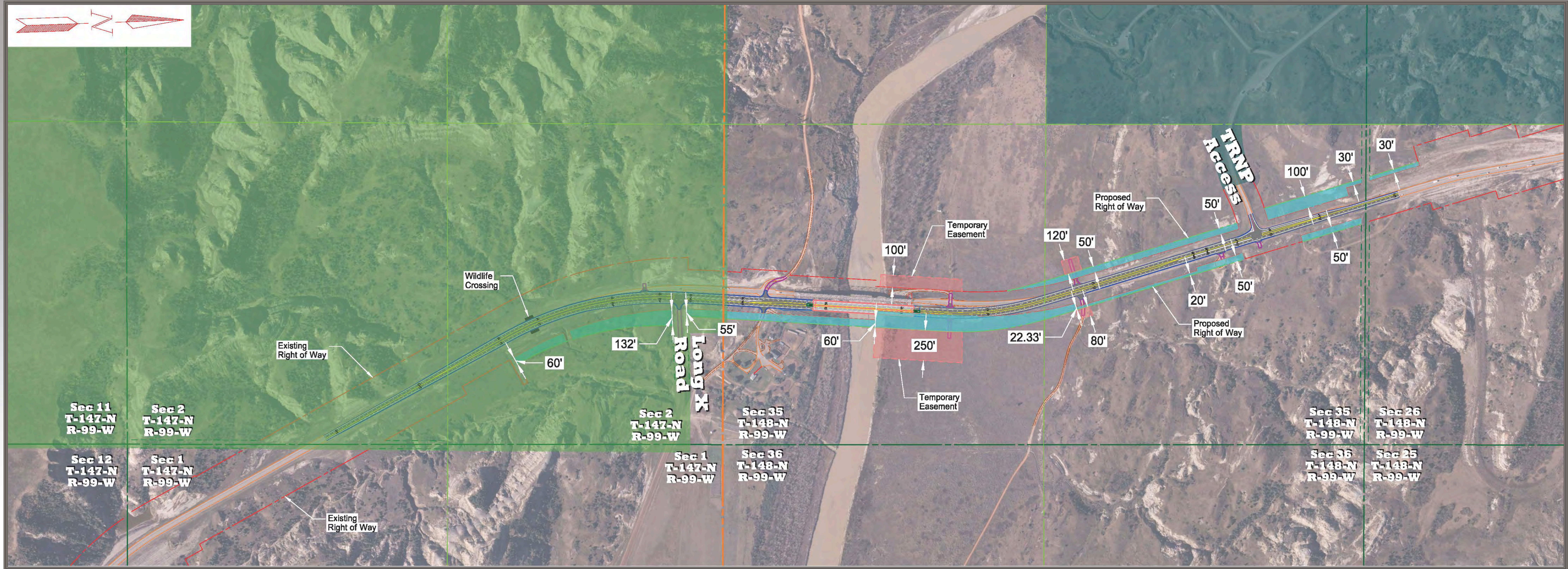


Roadway Simulation (looking north)



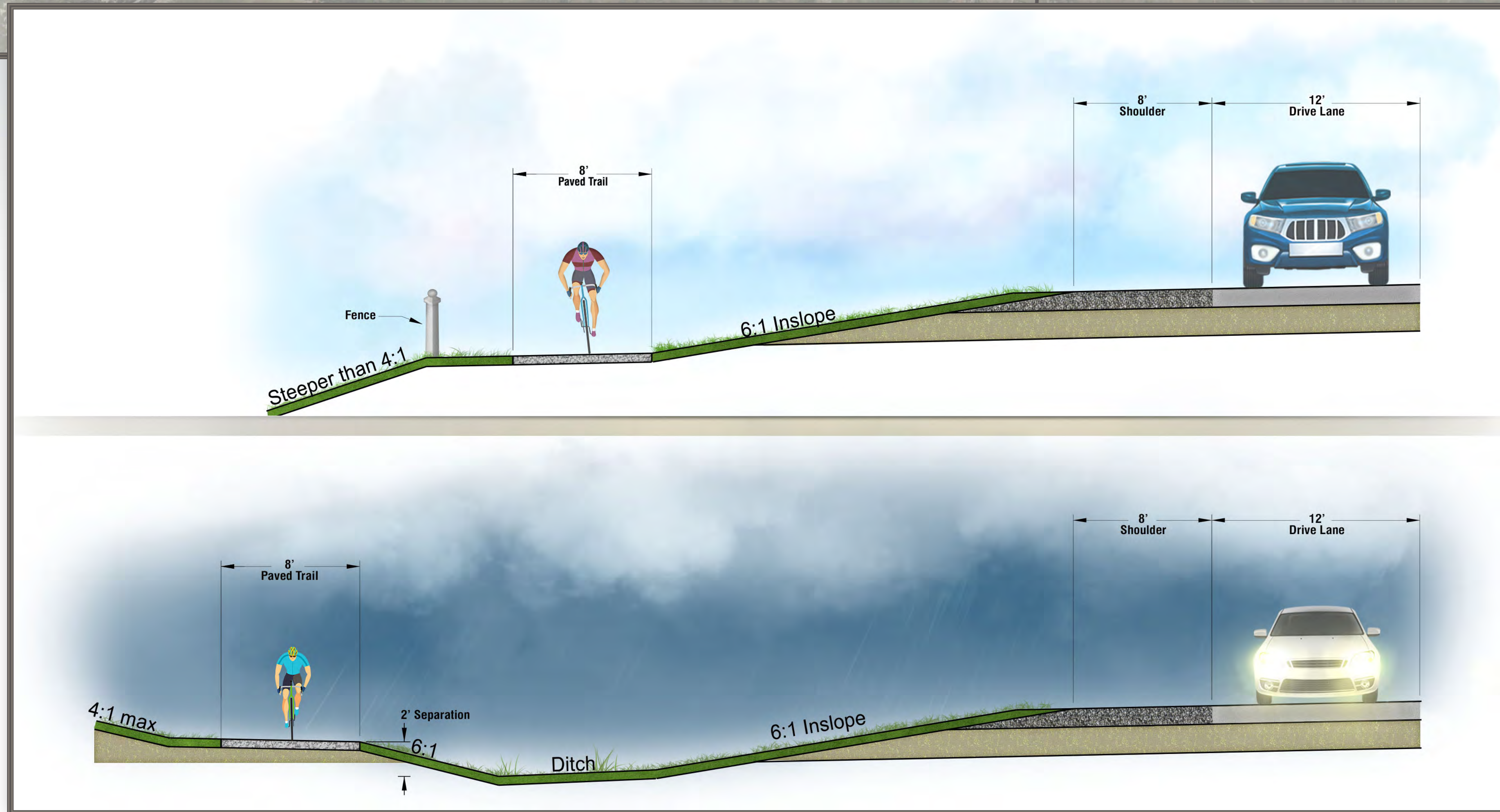
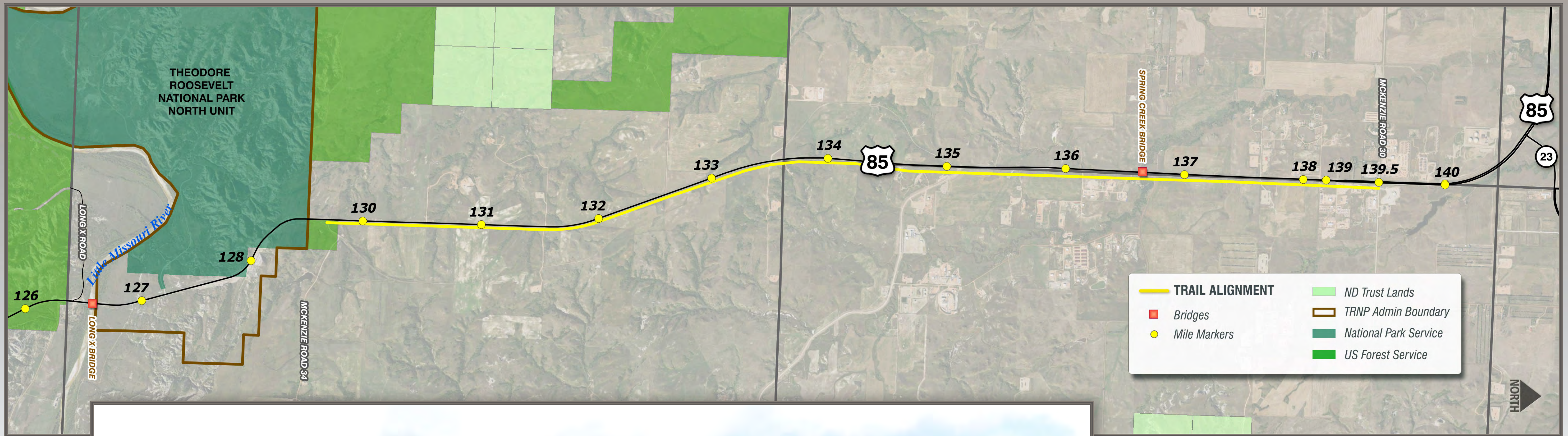
**Long X Bridge Option LX-3:
New Four-lane Bridge, Remove
Existing Long X Bridge**



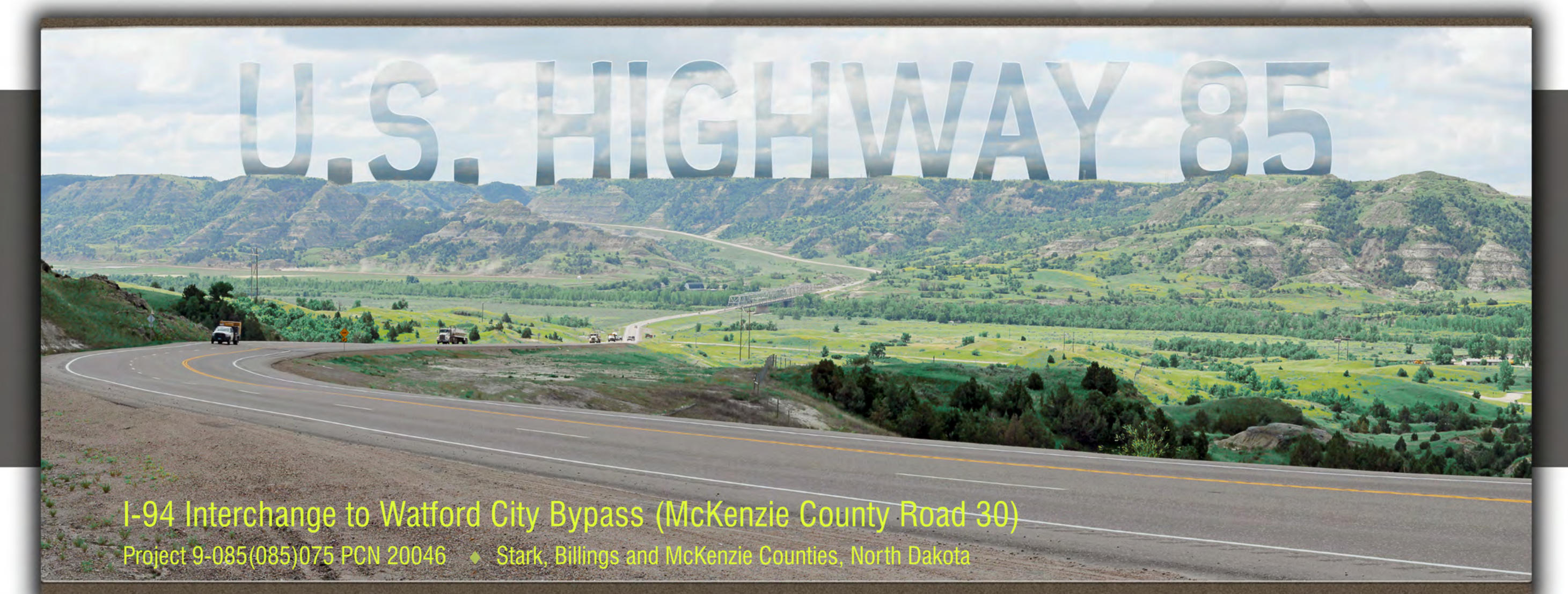


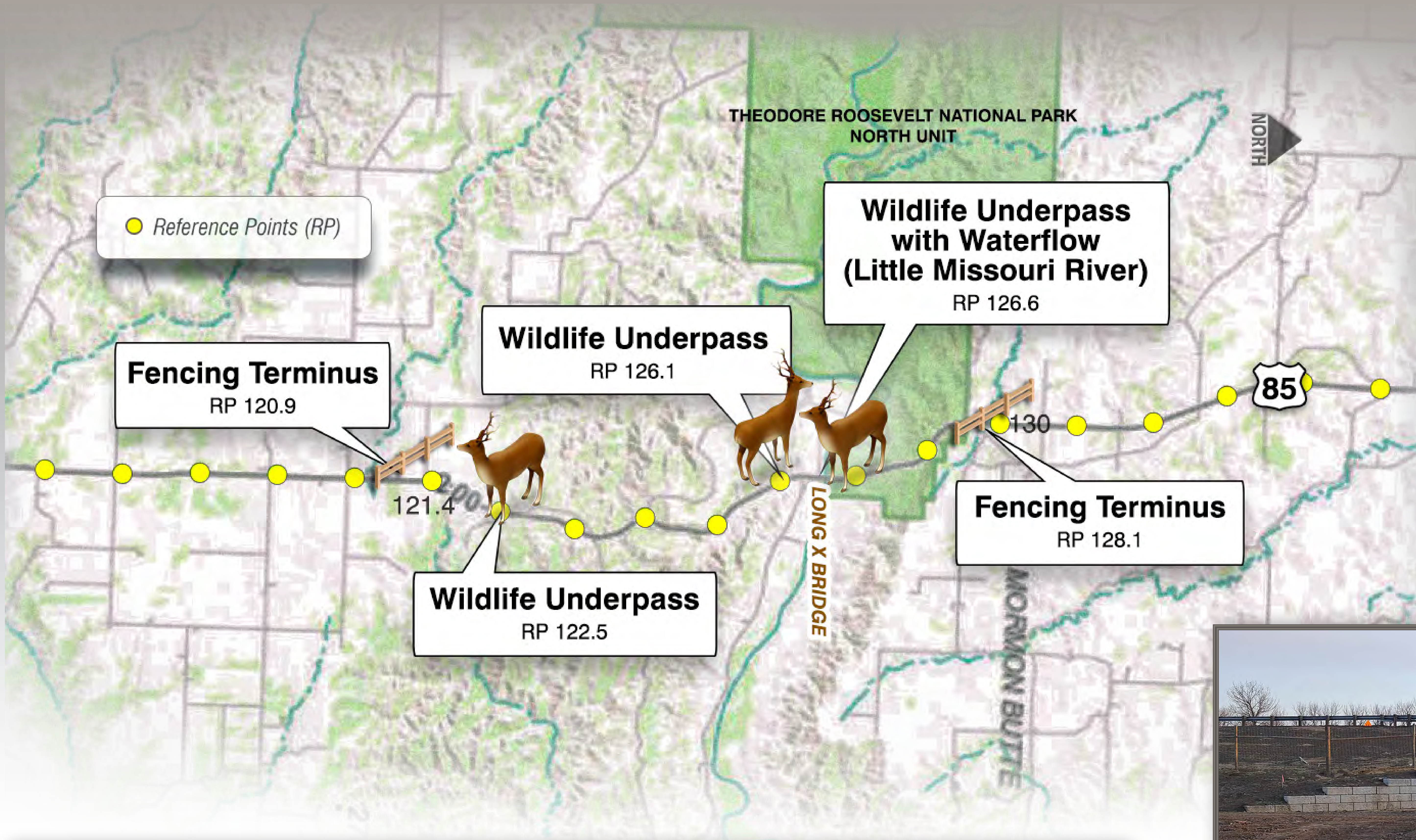
Long X Bridge Construction



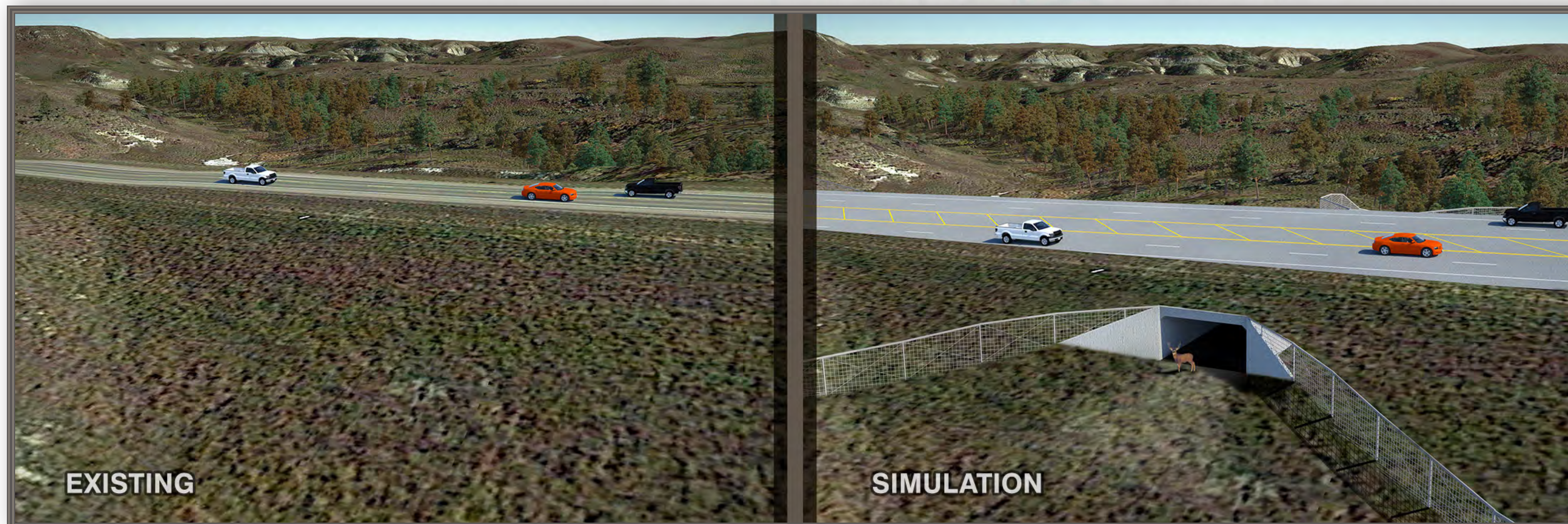


Trail





Jump-out and Fencing (view from non-roadway side)



Wildlife Underpass Simulation (RP 122.5)



SPAN BRIDGE



ARCH STRUCTURE

Wildlife Underpass Examples (RP 126.1)



Wildlife Crossing System

