

OVERHEAD SIGN LIGHTING DETAILS
(METAL HALIDE -- BRIDGE MOUNTED)

NOTES:

Conduit: Attach conduit to sign structure using steel banding and/or conduit hangers. See sign lighting layout sheet(s) for feeder conduit layout.

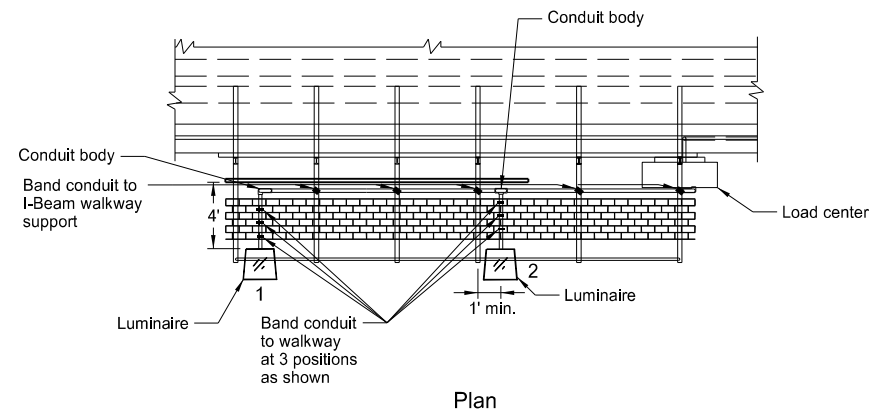
Banding: Use 3/4" width stainless steel with stainless steel buckles for banding.

Load Center: Provide load center of sufficient size to accommodate the required wiring, equipment, and feed conduit. See the sign lighting layout sheet(s) for size of conduit.

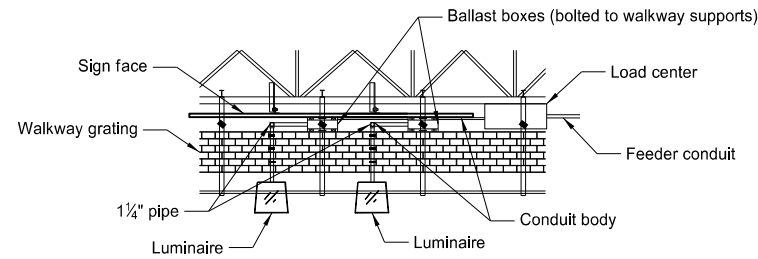
Ballast: Mount a separate ballast in each luminaire or ballast box bolted to the walkway support. Do not splice conductor between luminaire and ballast.

Luminaires: Operate metal halide luminaires on 240 Volts unless shown otherwise on layout sheet(s). See sign lighting layout sheet(s) for number and location of luminaires.

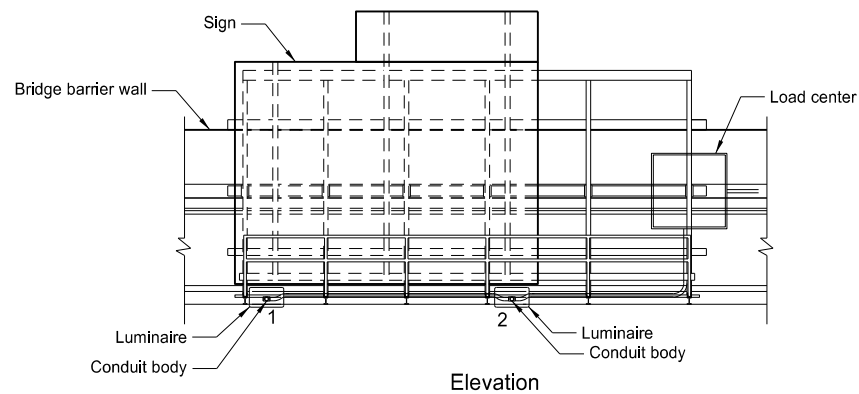
Bridge Mounting: See layout sheet(s) for bridge mounting details.



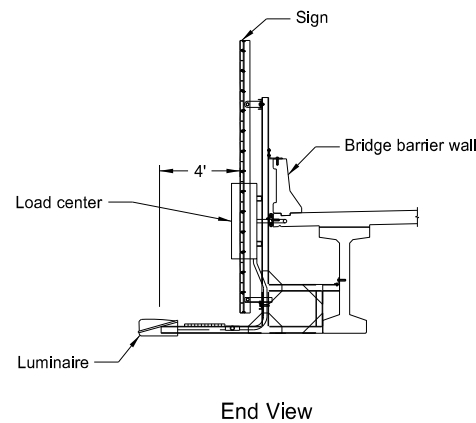
Plan



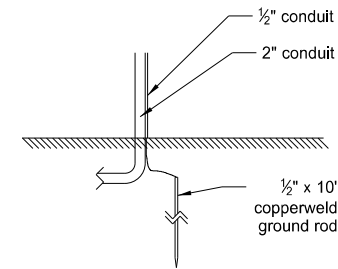
Ballast Box Detail



Elevation



End View



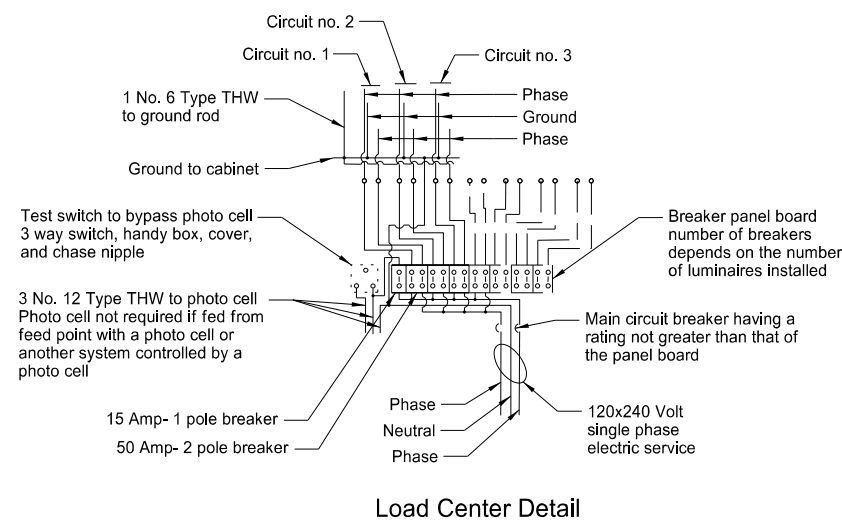
Ground Rod Detail

CONDUIT SIZES AND NUMBER OF CONDUCTORS			
FROM LUMINAIRE TO LUMINAIRE CONDUIT SIZE	NUMBER OF CONDUCTORS		
	FEEDER CONDUCTOR (No. 12 AWG)	GROUNDING CONDUCTOR (No. 12 THW)	
1-2	1 1/4"	2	1
2-3	1 1/4"	4	1
3-4	1 1/4"	6	1
4-5	1 1/4"	8	1
5-6	1 1/4"	10	1
6-7	1 1/4"	12	1
7-8	1 1/4"	14	1
8-9	1 1/2"	16	1
9-10	1 1/2"	18	1
10-11	1 1/2"	20	1
11-12	2"	22	1
12-13	2"	24	1
13-14	2"	26	1

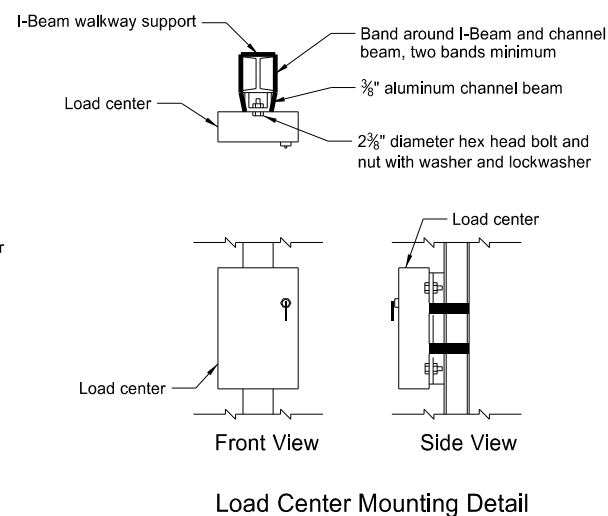
Install the number of luminaires shown in the plans, unless the appropriate shop drawings require a different number. Then install that number of luminaires instead.

Use conduit sizes shown in the conduit size table.

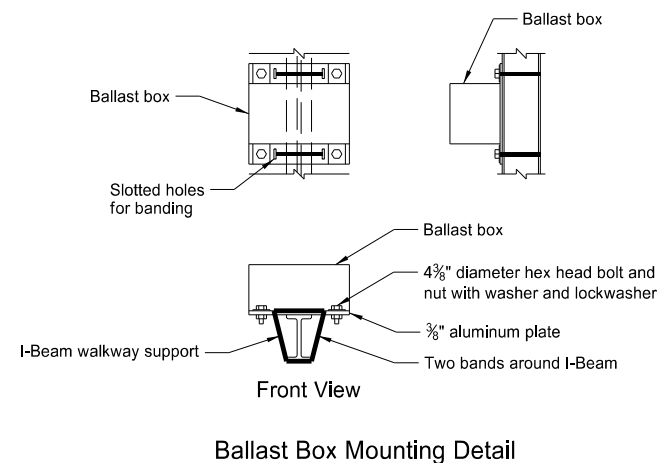
From the load center to the closest luminaire, use the size and number conduit and conductor shown as if running to the next sequential luminaire.



Load Center Detail



Load Center Mounting Detail



Ballast Box Mounting Detail

NORTH DAKOTA DEPARTMENT OF TRANSPORTATION	
10-15-13	
REVISIONS	
DATE	CHANGE
10-17-17 8-28-19	Updated to active voice. New Design Engineer PE Stamp.

This document was originally issued and sealed by
Kirk J Hoff,
Registration Number
PE- 4683,
on 8/28/19 and the original document is stored at the North Dakota Department of Transportation