

# OVERHEAD SIGN LIGHTING DETAILS (LED – BRIDGE MOUNTED)

D-770-6A

**NOTES:**

Conduit: Attach conduit to sign structure using steel banding and/or conduit hangers. See layout sheet(s) for feeder conduit layout.

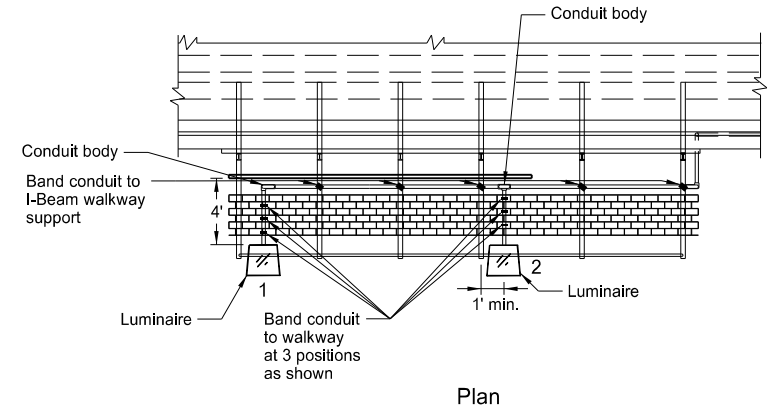
Banding: Use 3/4" width stainless steel with stainless steel buckles for banding.

Load Center: Provide load center of sufficient size to accommodate the required wiring, equipment, and feed conduit. See sign lighting layout sheet(s) for size of conduit.

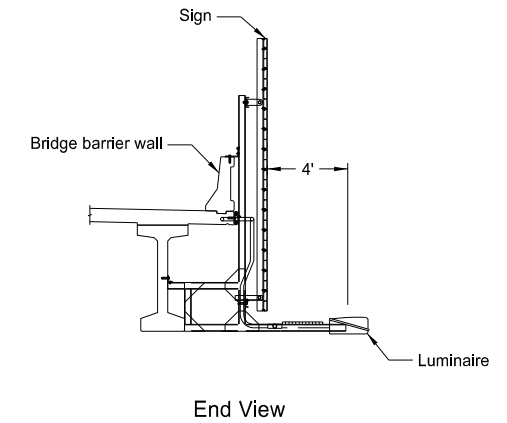
Luminaires: Operate LED luminaires on 240 Volts unless shown otherwise on layout sheet(s). See sign lighting layout sheet(s) for number and location of luminaires.

Optics: Provide optical system with uniform distribution of 4000K to 5000K light.

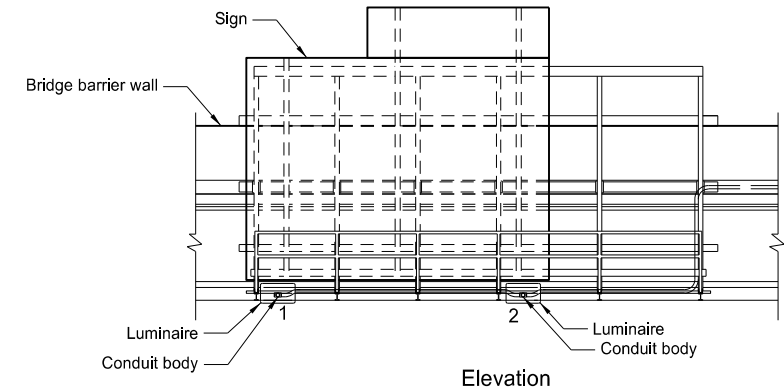
Bridge Mounting: See sign lighting layout sheet(s) for bridge mounting details.



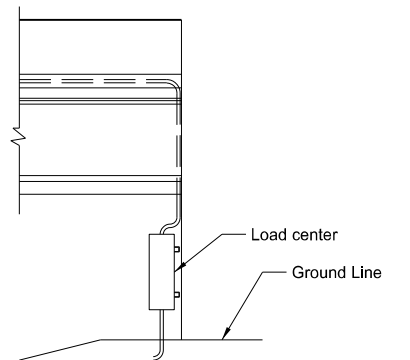
Plan



End View



Elevation

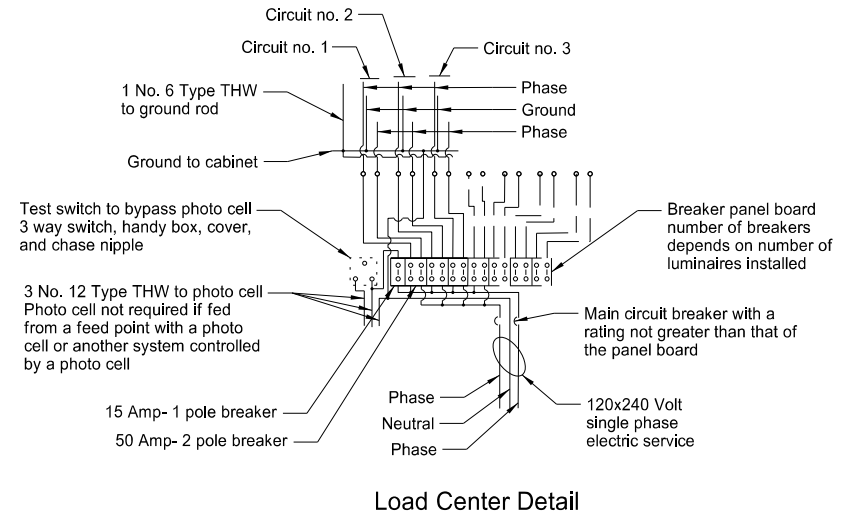


CONDUIT SIZES AND NUMBER OF CONDUCTORS				
FROM LUMINAIRE TO LUMINAIRE	CONDUIT SIZE	NUMBER OF CONDUCTORS		
		FEEDER CONDUCTOR (No. 12 AWG)	GROUNDING CONDUCTOR (No. 12 THW)	
1-2	1 1/4"	2	1	
2-3	1 1/4"	4	1	
3-4	1 1/4"	6	1	
4-5	1 1/4"	8	1	
5-6	1 1/4"	10	1	
6-7	1 1/4"	12	1	
7-8	1 1/4"	14	1	
8-9	1 1/2"	16	1	
9-10	1 1/2"	18	1	
10-11	1 1/2"	20	1	
11-12	2"	22	1	
12-13	2"	24	1	
13-14	2"	26	1	

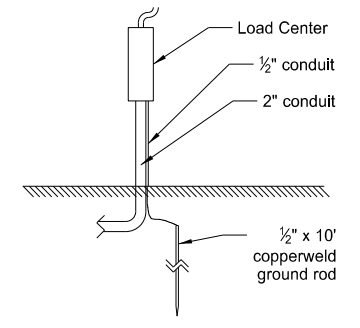
Install the number of luminaires shown in the plans, unless the appropriate shop drawings require a different number. Then install that number luminaires.

Use conduit sizes shown in the conduit size table.

From the load center to the closest luminaire, use the size and number conduit and conductor shown as if running to the next sequential luminaire.



Load Center Detail



Ground Rod Detail

NORTH DAKOTA DEPARTMENT OF TRANSPORTATION	
05-29-14	
REVISIONS	
DATE	CHANGE
10-17-17 8-28-19	Updated to active voice. New Design Engineer PE Stamp.

This document was originally issued and sealed by  
**Kirk J Hoff,**  
Registration Number  
**PE- 4683,**  
on **8/28/19** and the original document is stored at the  
North Dakota Department  
of Transportation