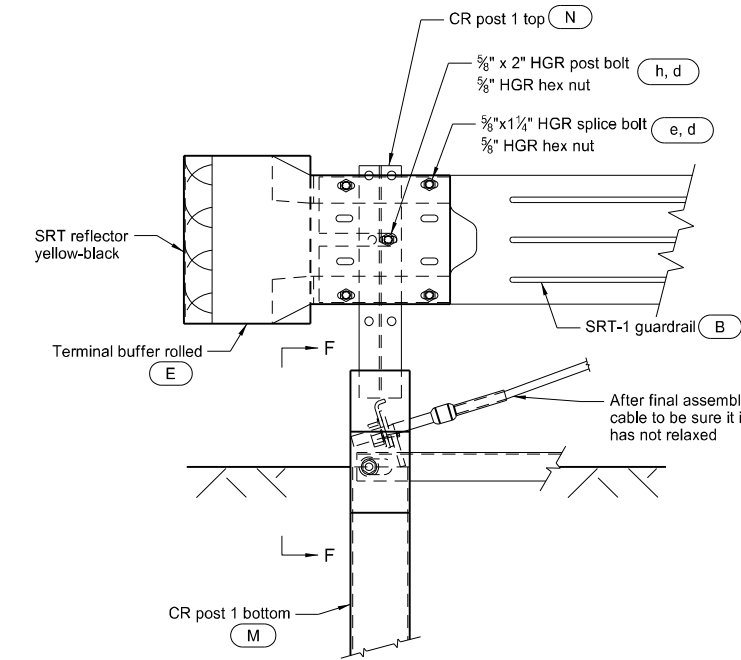
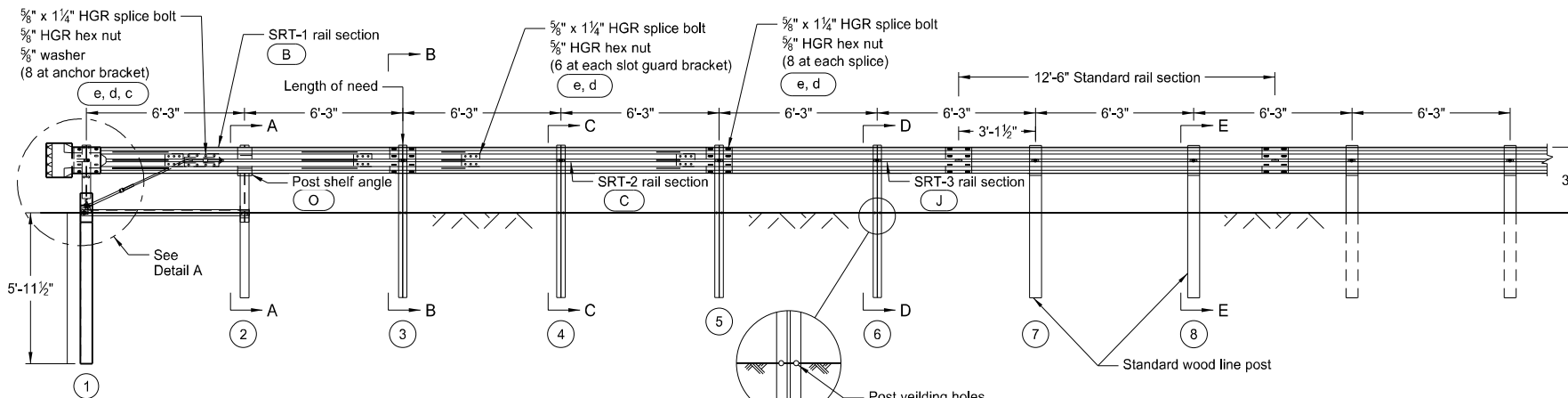
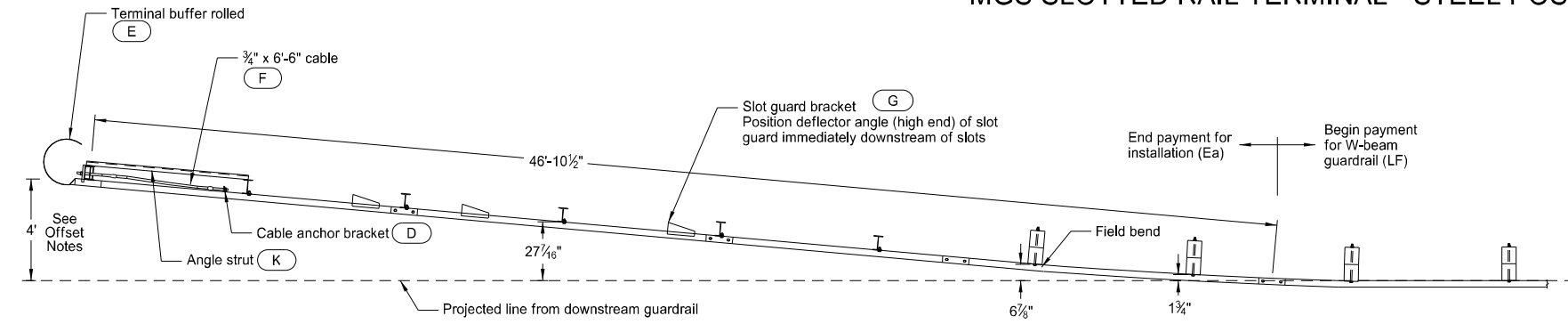
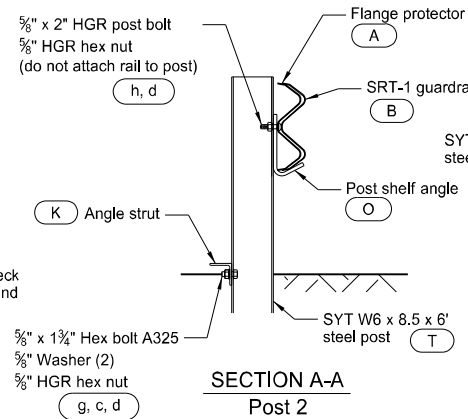


# MGS SLOTTED RAIL TERMINAL - STEEL POST

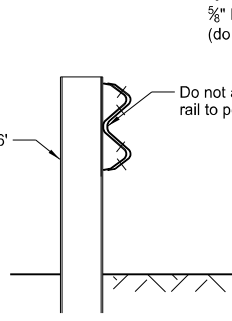
D-764-39



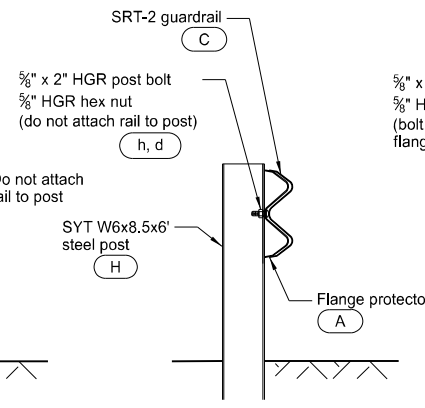
**DETAIL B**  
Posts 3 through 6



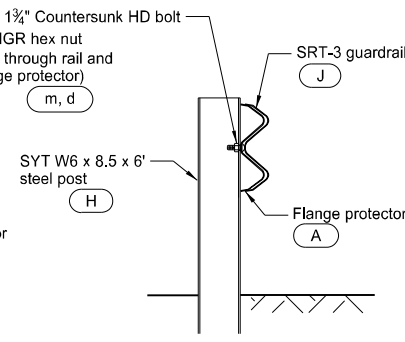
**SECTION B-B**  
Posts 3 and 5



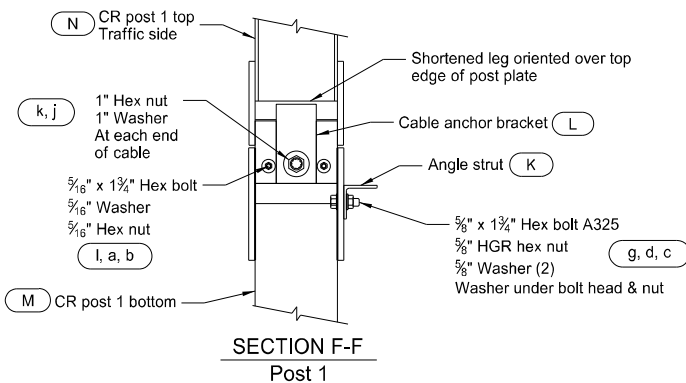
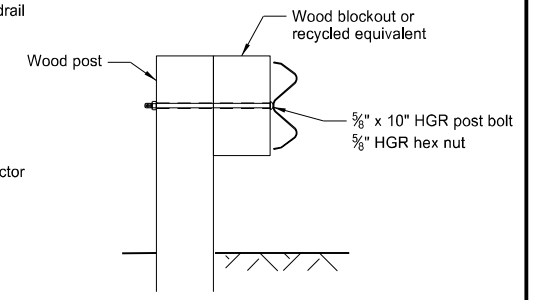
**SECTION C-C**  
Post 4



**SECTION D-D**  
Post 6



**SECTION E-E**  
Posts 7 and 8



**GENERAL NOTES:**

- Galvanize all bolts, nuts, cable assemblies, cable anchors, bearing plates, slot guards, struts, nails, pipes soil tubes and soil plates.
- Install breakaway cable assembly taut. Use a locking device (vice grips or channel lock pliers) to prevent cable from twisting when tightening nuts.
- For curb installation, end curb prior to post 7. Where curb extends beyond post 7, do not use the flared Slotted Rail Terminal. Use a straight end treatment at the end of straight guardrail placed at the face of the curb.
- For details not shown, see the manufacturer's installation manual.
- Only use the Slotted Rail Terminal as an end terminal when a minimum length of 175 feet, including the length of the end terminal, is provided in advance of fixed objects.

**OFFSET NOTES:**

- Post offset dimensions are given to the center of the traffic face of posts, except at posts 7 and 8 where dimensions are to the center of the traffic face of the blockouts.
- Guardrail between posts 1-7 is on a straight line flare.
- Install the Slotted Rail Terminal with a 4' flare for either a straight or flared guardrail installation.

ITEM	ITEM NO.	BILL OF MATERIALS	QTY
A	7G	12/6"/FLANGE PROTECTOR (POSTS 2, 4, 6)	3
B	30G	12/12-6"/S SRT-1 RAIL SECTION	1
C	39G	12/12-6"/S SRT-2 RAIL SECTION	1
D	700A	CABLE ANCHOR BRACKET	1
E	907G	TERMINAL BUFFER ROLLED	1
F	3000G	3/4" x 6-6" CABLE	1
G	9960G	SLOT GUARD BRACKET	4
H	15000G	SYT W6x8.5 6' STEEL POST	5
J	10967G	12/9-4 1/2"/3-1 1/2"/S SRT-3 RAIL SECTION	1
K	33875G	ANGLE STRUT 3" x 3" x 1/4"	1
L	33909G	CABLE ANCHOR BRACKET (POST 1)	1
M	34052A	CR POST 1 BOTTOM W6x15	1
N	34053A	CR POST 1 TOP W6x8.5	1
O	34054G	POST SHELF ANGLE (POST 2)	1
HARDWARE			
a	3240G	5/16" WASHER	2
b	3245G	5/16" HEX NUT	2
c	3300G	5/8" WASHER	12
d	3340G	5/8" HGR HEX NUT	75
e	3360G	5/8" Dia x 1 1/4" HGR SPLICE BOLT	60
f	3380G	5/8" Dia x 1 1/2" HEX HD BOLT	8
g	3391G	5/8" Dia x 1 3/4" HEX BOLT A325 (AT STRUT)	2
h	3400G	5/8" Dia x 2" HGR POST BOLT (POSTS 1, 2, 4)	4
j	3900G	1" WASHER (AT CABLE)	2
k	3910G	1" HEX NUT (AT CABLE)	2
l	4211G	5/16" Dia x 1 3/4" HEX BOLT (POST 1)	2
m	4419G	5/8" Dia x 1 3/4" COUNTERSUNK HD BOLT (POST 6)	1

NOTE: Standard rail section and standard wood line posts (including the blocks, and associated hardware) not included in Bill of Materials Table. All splice bolts (including associated nuts) are included in the Bill of Materials Table.

NORTH DAKOTA DEPARTMENT OF TRANSPORTATION	
7-14-17	
REVISIONS	
DATE	CHANGE
12-02-20	Updated notes to active voice.

