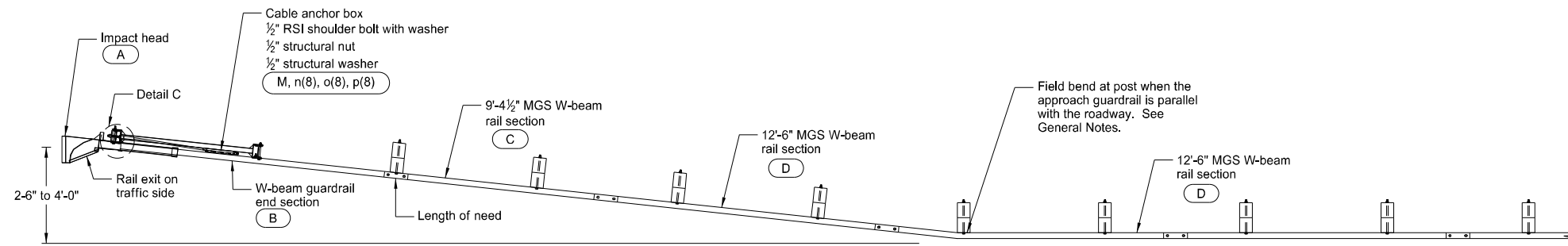
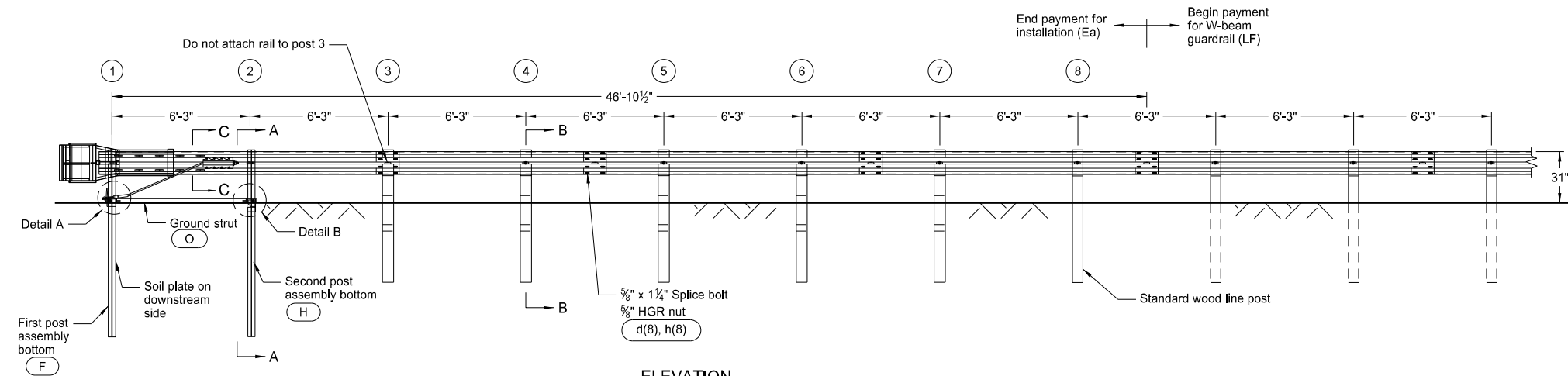


MGS FLARED ENERGY ABSORBING TERMINAL - WOOD POST

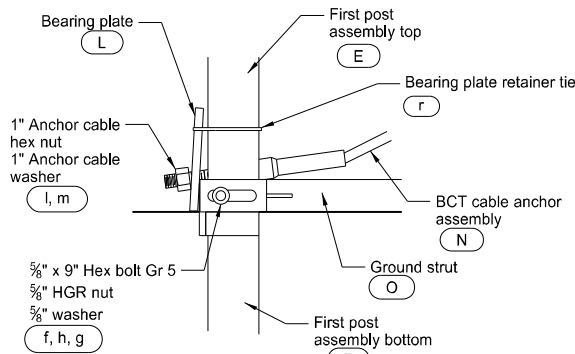
D-764-38



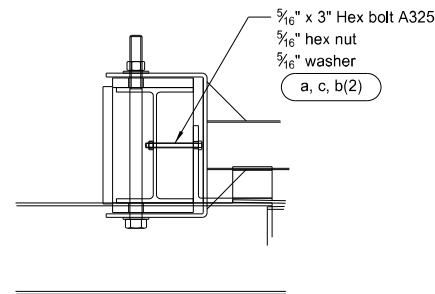
PLAN



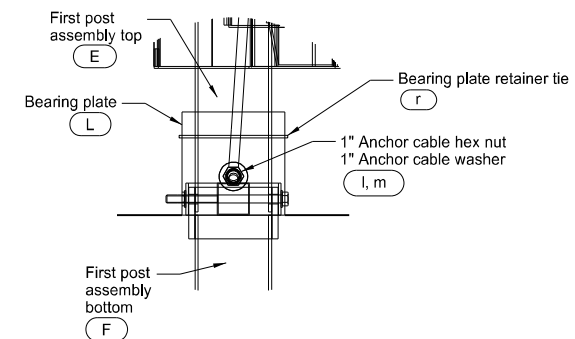
ELEVATION



SIDE VIEW

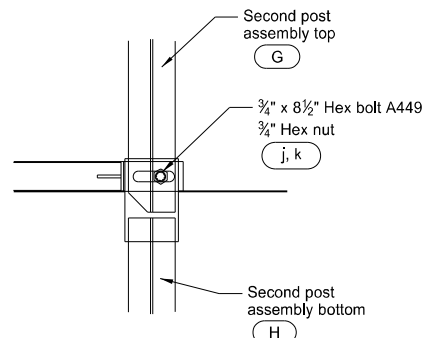


DETAIL C
Post 1 (Impact Head connection)

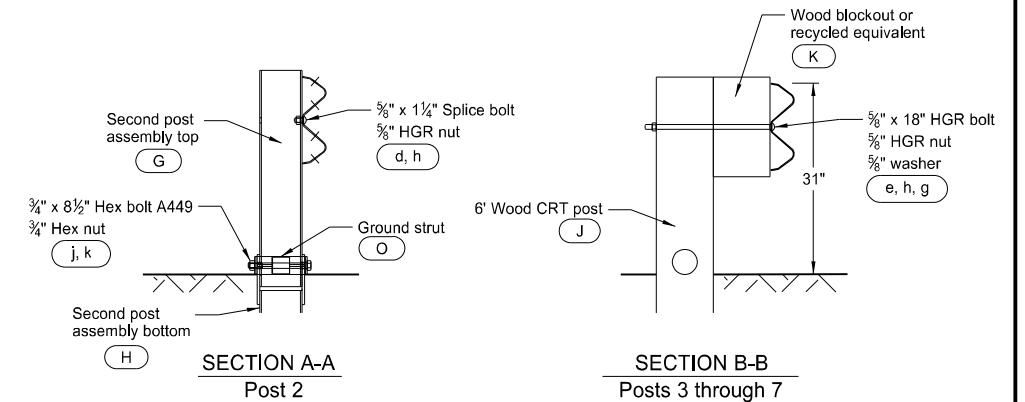


FRONT VIEW

DETAIL A
Post 1

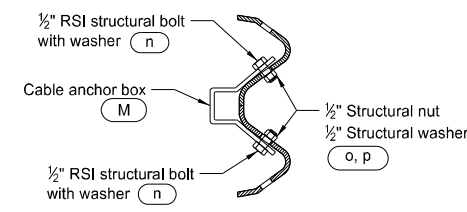


DETAIL B
Post 2



SECTION A-A
Post 2

SECTION B-B
Posts 3 through 7



SECTION C-C

GENERAL NOTES:

- Wood posts are required with the Flared Energy Absorbing Terminal except posts 1 and 2.
- Galvanize all bolts, nuts, cable assemblies, cable anchors, and bearing plates.
- Flare the Flared Energy Absorbing Terminal when the approach guardrail is parallel with the roadway. When the approach guardrail is flared at 16:1 to 10:1, ensure the Flared Energy Absorbing Terminal has only the flare rate of the guardrail. When the guardrail flare is between 10:1 and 7:1, ensure the Flared Energy Absorbing Terminal is turned parallel to the roadway.
- Site grade as necessary to ensure the lower sections of the posts do not protrude more than 4" above the ground (measured along a 5' cord).
- Install the lower section of the hinged posts without the upper post attached. If the post is placed in a drilled hole, compact the backfill material to prevent settlement.
- Install the breakaway cable assembly taut. Use a locking device (vice grips or channel lock pliers) to prevent cable from twisting when tightening nuts.
- "Toe nail" the wood blockouts to the rectangular wood posts with two 20 penny galvanized nails to prevent them from turning when the wood shrinks.

ITEM	ITEM NO.	BILL OF MATERIALS	QTY
A	F3000	IMPACT HEAD	1
B	SF1303	W-BEAM GUARDRAIL END SECTION, 12 Ga	1
C	G12025	9'-4 1/2" MGS W-BEAM RAIL SECTION, 12 Ga	1
D	G1203A	12'-6" MGS W-BEAM RAIL SECTION, 12 Ga	2
E	UHP1A	FIRST POST ASSEMBLY TOP	1
F	HP1B	FIRST POST ASSEMBLY BOTTOM	1
G	UHP2A	SECOND POST ASSEMBLY TOP	1
H	HP2B	SECOND POST ASSEMBLY BOTTOM	1
J	UP671	WOOD CRT POST	5
K	P675	WOOD BLOCKOUT OR RECYCLE EQUIVALENT	5
L	E750	BEARING PLATE	1
M	S760	CABLE ANCHOR BOX	1
N	E770	BCT CABLE ANCHOR ASSEMBLY	1
O	S785	GROUND STRUT HINGED POST	1
HARDWARE			
a	B5160304A	5/16" x 3" HEX BOLT A325	2
b	W0516	5/16" WASHER	4
c	N0516	5/16" HEX NUT	2
d	B580122	5/8" Dia x 1 1/4" SPLICE BOLT	33
e	B581802	5/8" Dia X 18" HGR BOLT	5
f	B580904A	5/8" Dia x 9" HEX BOLT GRD 5	1
g	W050	5/8" WASHER	7
h	N050	5/8" Dia HGR NUT	39
j	B340854A	3/4" Dia x 8 1/2" HEX BOLT GRD A449	1
k	N030	3/4" Dia HEX NUT	1
l	N100	1" ANCHOR CABLE HEX NUT	2
m	W100	1" ANCHOR CABLE WASHER	2
n	SB12A	1/2" RSI SHOULDER BOLT WITH WASHER	8
o	N012A	1/2" STRUCTURAL NUT	8
p	W012A	1/2" STRUCTURAL WASHER	8
r	CT-100ST	BEARING PLATE RETAINER TIE	1

NOTE: Standard wood line post, block, and associated hardware not included in Bill of Materials Table.

NORTH DAKOTA
DEPARTMENT OF TRANSPORTATION
7-14-17
REVISIONS

DATE CHANGE
12-02-20 Updated notes to active voice.



12 02 2020