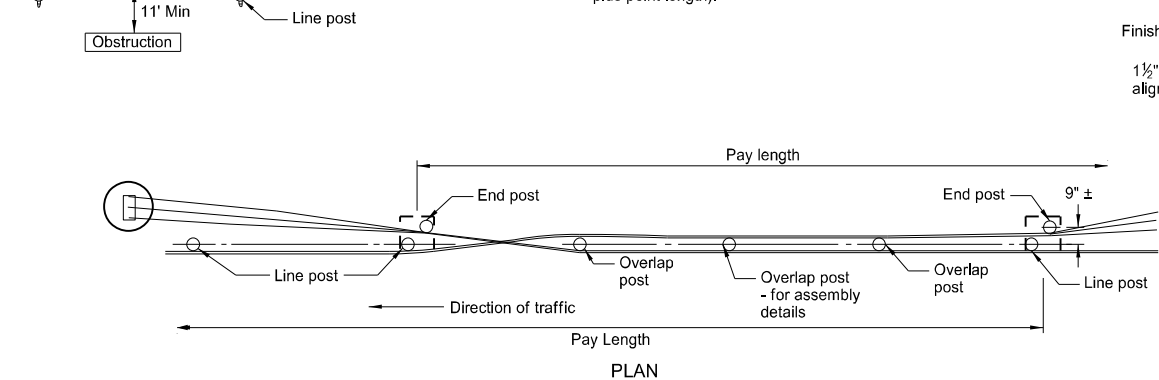
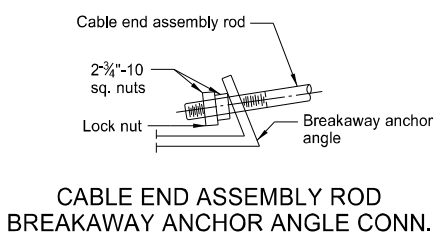


ASSEMBLY WITH END ANCHORAGES

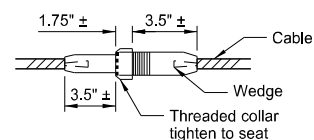
Note: If line post is pointed to facilitate driving, add additional length for the point (6'-0" plus point length).



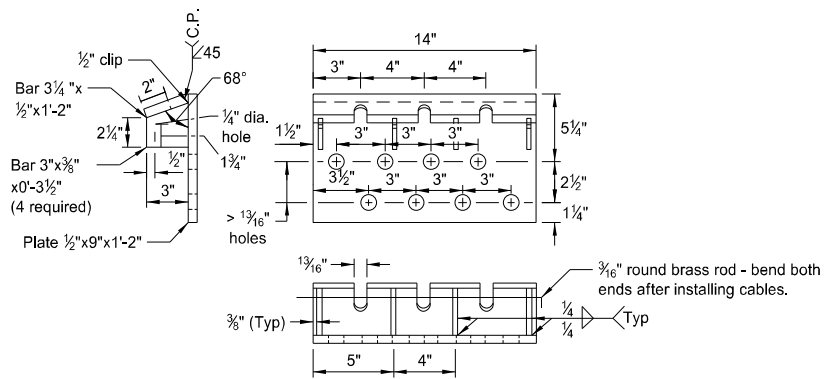
ASSEMBLY WITH INTERMEDIATE ANCHORAGES



CABLE END ASSEMBLY ROD BREAKAWAY ANCHOR ANGLE CONN.

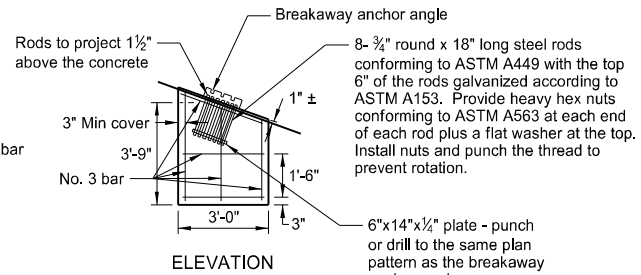


CABLE SPLICE ASSEMBLY



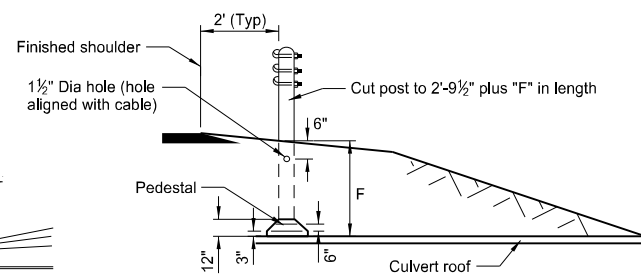
BREAKAWAY ANCHOR ANGLE

THREE CABLE GUARDRAIL



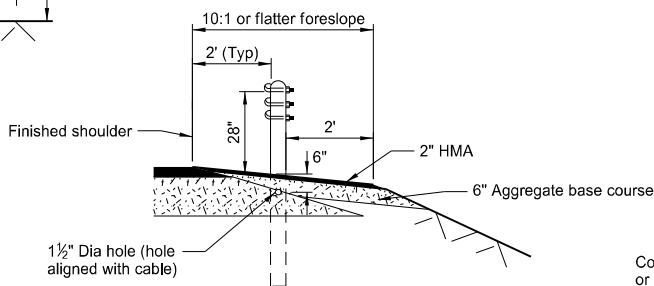
Cast class AE concrete foundation in place. Form foundation 6 inches into ground and surface rub finish top with chamfered edges.

CONCRETE ANCHOR

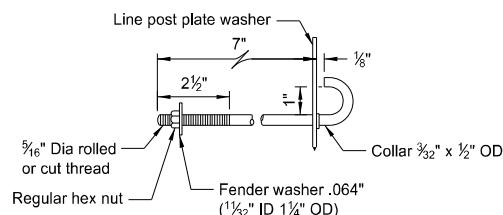


CONCRETE PEDESTAL AT CULVERTS (WHERE REQUIRED)

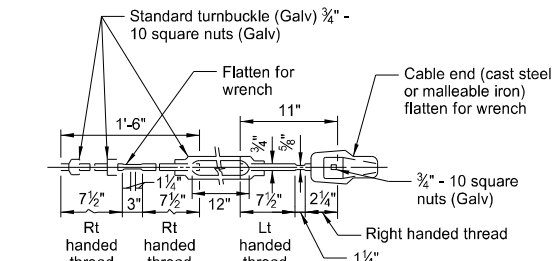
Detail of concrete pedestal for posts - use over culverts or footings when dimension "F" is less than 3'-8".



TYPICAL SECTION

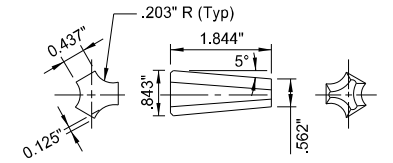


HOOK BOLT

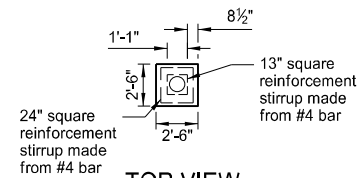


STEEL TURNBUCKLE CABLE END ASSEMBLY

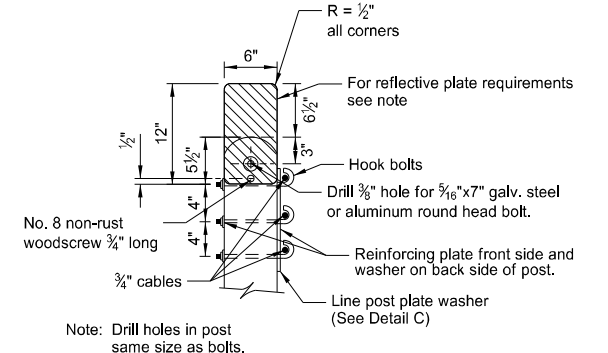
Minimum tensile strength - 25,000 lbs.



WEDGE DETAIL



TOP VIEW PEDESTAL



LINE POST ASSEMBLY WITH REFLECTORIZING DETAIL

Notes: ReflectORIZED Plates: Place reflector plates on first and last posts. Space between at 25' centers on guardrail less than 250' in length and at 50' centers for guardrail over 250' in length. Use same color reflector as the pavement marking adjacent to that reflector unless noted otherwise on the plans.

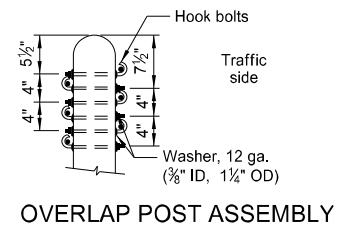
Space intermediate anchors equally at intervals not to exceed 1000 ft. on tangents and the outside of horizontal curves. Do not use cable guardrail on the inside of curves sharper than 4°. On the inside of curves 4° or flatter, space intermediate anchors at intervals not to exceed:

DEGREE OF CURVE (° MEASUREMENT)	DISTANCE BETWEEN INTERMEDIATE ANCHORS
4°	150 ft.
3°	175 ft.
2°	215 ft.
1°	300 ft.
30 minutes	430 ft.
15 minutes	600 ft.

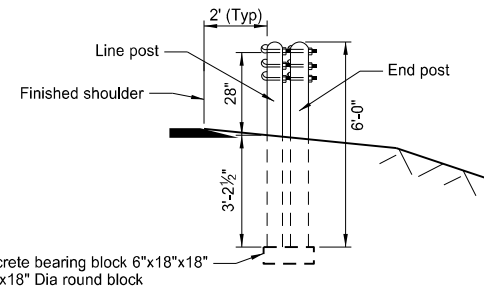
For intermediate curves, interpolate between values listed above.

The pay length is from end post to end post. Include costs for end posts, hardware, and blocks for the intermediate anchorage assembly in the price bid for "3-cable guardrail".

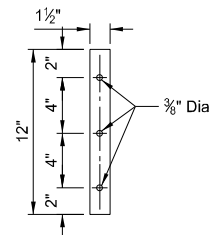
Furnish and install wood posts.



OVERLAP POST ASSEMBLY



END VIEW



LINE POST PLATE WASHER 1/8" x 1 1/2" x 12" DETAIL C

NORTH DAKOTA DEPARTMENT OF TRANSPORTATION	
2-28-14	
REVISIONS	
DATE	CHANGE
12-02-20	Updated notes to active voice.

KIRK J. HOFF
REGISTERED PROFESSIONAL ENGINEER
NORTH DAKOTA
PE-4683
12 02 2020