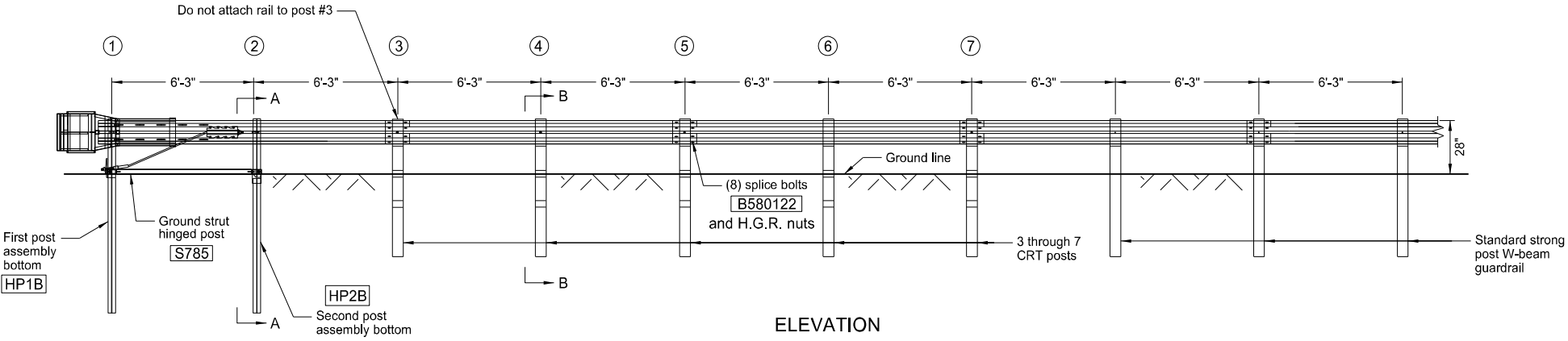
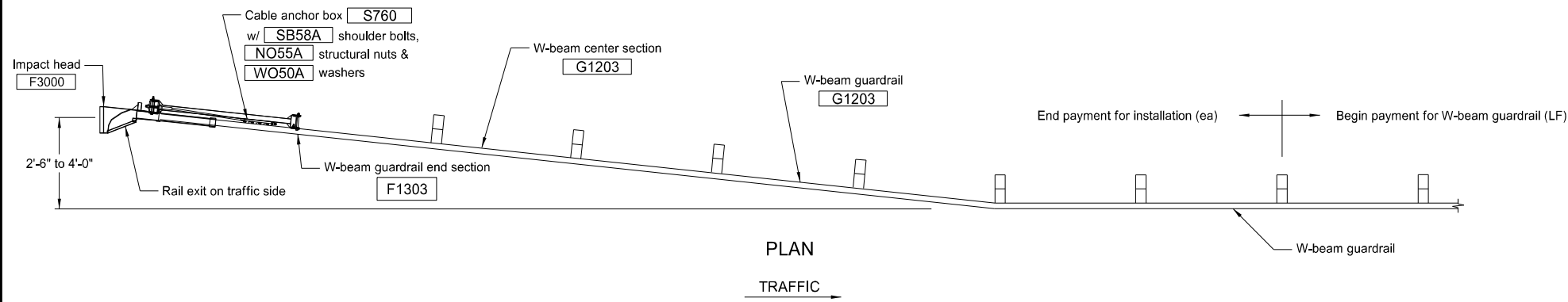


FLARED ENERGY ABSORBING TERMINAL

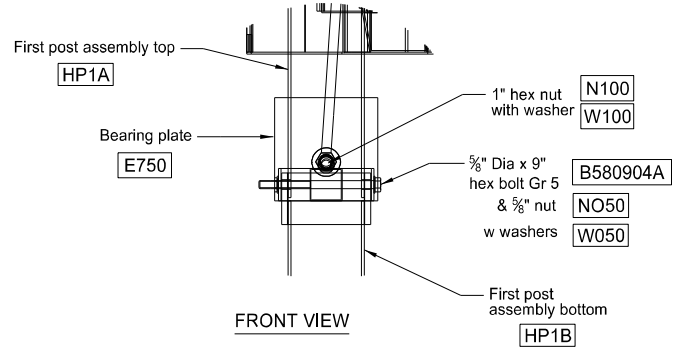
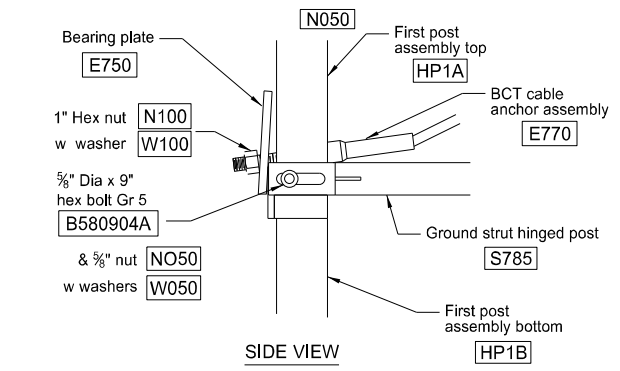
D-764-6



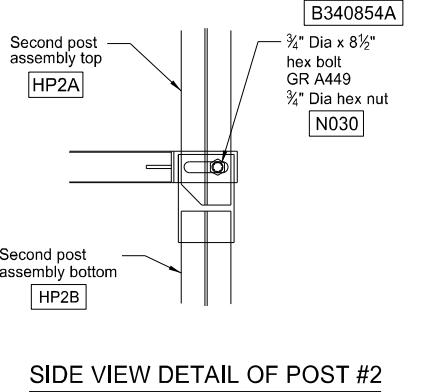
ITEM #	QTY	BILL OF MATERIALS
F3000	1	IMPACT HEAD
F1303	1	W-BEAM GUARDRAIL END SECTION, 12 GA
G1203	2	W-BEAM GUARDRAIL, 12 GA
HP1A	1	FIRST POST ASSEMBLY TOP
HP1B	1	FIRST POST ASSEMBLY BOTTOM
HP2A	1	SECOND POST ASSEMBLY TOP
HP2B	1	SECOND POST ASSEMBLY BOTTOM
P671	5	WOOD CRT POST
P675	5	TIMBER BLOCKOUT OR RECYCLED EQUIVALENT
E750	1	BEARING PLATE
S760	1	CABLE ANCHOR BOX
E770	1	BCT CABLE ANCHOR ASSEMBLY
S785	1	GROUND STRUT HINGED POST
HARDWARE		
B140404	2	1/4" Dia x 4" HEX BOLT
W014	4	1/4" WASHER
N014	2	1/4" HEX NUT
B580122	17	5/8" Dia x 1 1/4" SPLICE BOLT
B581802	4	5/8" Dia x 10" H.G.R. BOLT (POSTS 3 THRU 6)
B580904A	1	5/8" Dia x 9" HEX BOLT GR 5
W050	5	5/8" WASHER
N050	22	5/8" Dia H.G.R. NUT
B340854A	1	3/4" Dia x 8 1/2" HEX BOLT GR A449
N030	1	3/4" Dia HEX NUT
N100	2	1" ANCHOR CABLE HEX NUT
W100	2	1" ANCHOR CABLE WASHER
SB58A	8	CABLE ANCHOR BOX SHOULDER BOLT
N055A	8	1/2" A325 STRUCTURAL NUT
W050A	16	1 1/16" OD x 3/16" ID A325 STR. WASHER

GENERAL NOTES

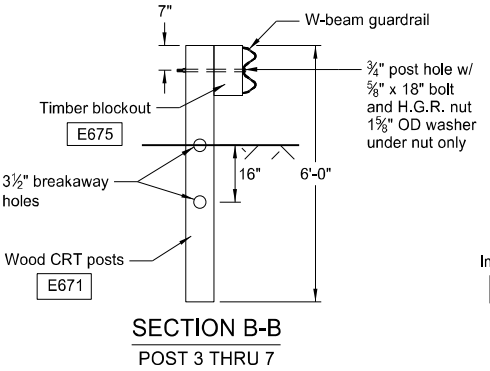
- Use wood posts with the Flared Energy Absorbing Terminal except posts #1 and #2.
- Use galvanized bolts, nuts, cable assemblies, cable anchors, and bearing plates.
- Grade site as needed to prevent lower sections of the posts from protruding more than 4 inches above the ground (measured along a 60 inch cord).
- Drive the lower section without the upper post attached. If the post is placed in a drilled hole, compact the backfill material satisfactorily to prevent settlement.
- When rock is encountered during excavation, use a 12" diameter post hole 20" into the rock surface, if approved by the Engineer. Place granular material in the bottom of hole approximately 2 1/2" deep to provide drainage. Field cut soil tubes to length, place in hole, and back fill with adequately compacted material excavated from hole.
- Place the breakaway cable assembly taut. Use a locking device (vice grips or channel lock pliers) to prevent the cable from twisting when tightening nuts.
- "Toe nail" the wood blockouts to the rectangular wood posts with two 20 penny galvanized nails in each post to prevent them from turning when the wood shrinks.
- Flare the Flared Energy Absorbing Terminal when the approach guardrail is parallel with the roadway. When the approach guardrail is flared at 16:1 to 10:1, flare the Flared Energy Absorbing Terminal at the flare rate of the guardrail. When the guardrail flare is between 10:1 and 7:1, turn the Flared Energy Absorbing Terminal parallel to the roadway.



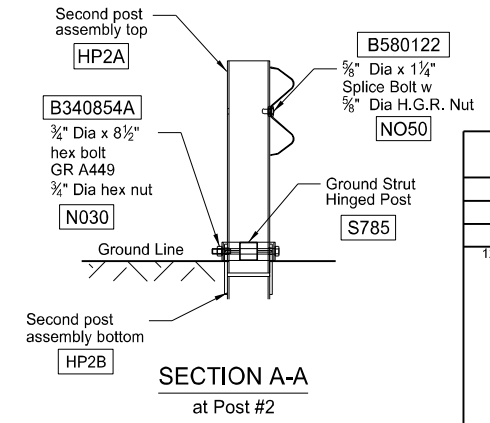
POST #1 CONNECTION DETAILS



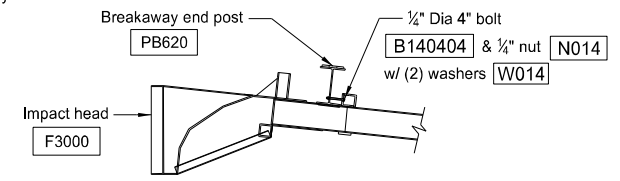
IMPACT HEAD CONNECTION DETAIL



SECTION B-B
POST 3 THRU 7



SECTION A-A
at Post #2



IMPACT HEAD CONNECTING DETAIL

NORTH DAKOTA DEPARTMENT OF TRANSPORTATION	
10-11-13	
REVISIONS	
DATE	CHANGE
12-02-20	Update notes to active voice.

