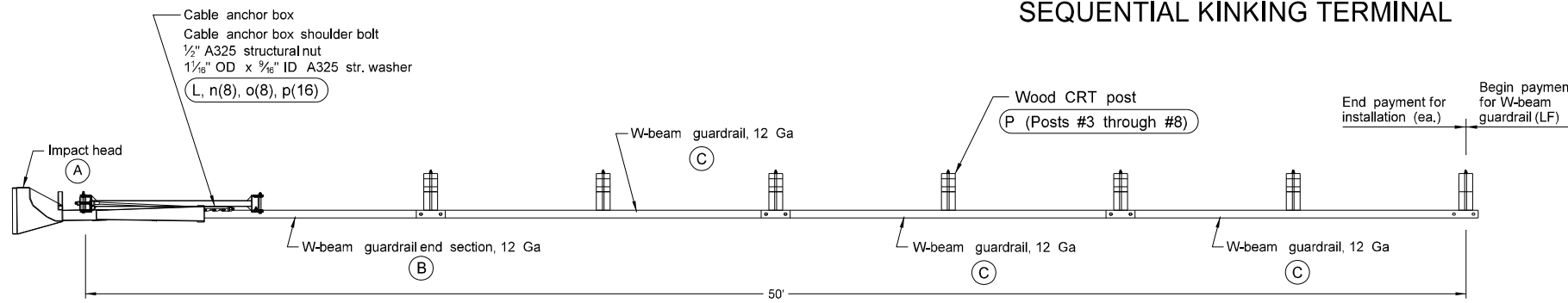
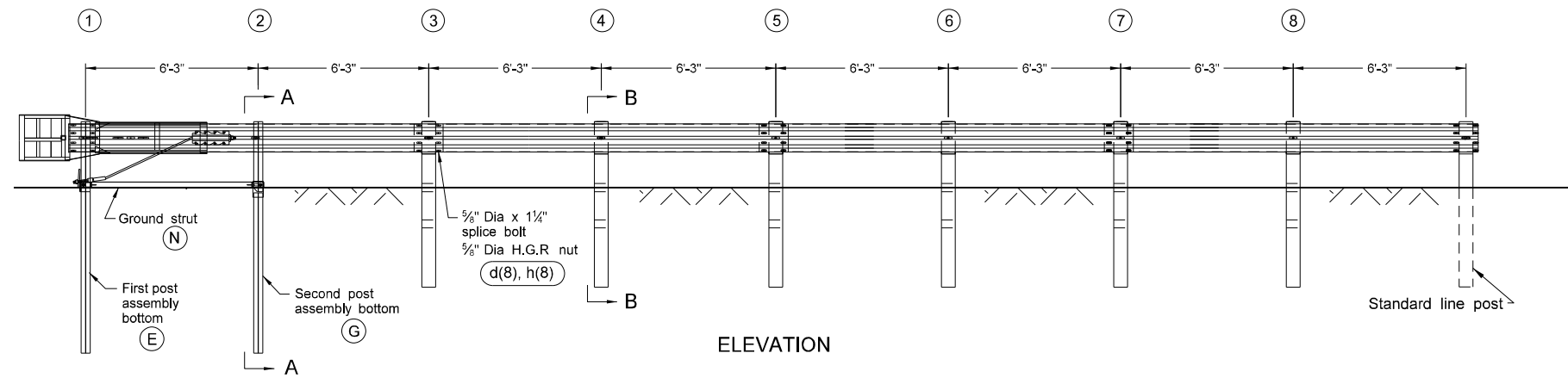


SEQUENTIAL KINKING TERMINAL

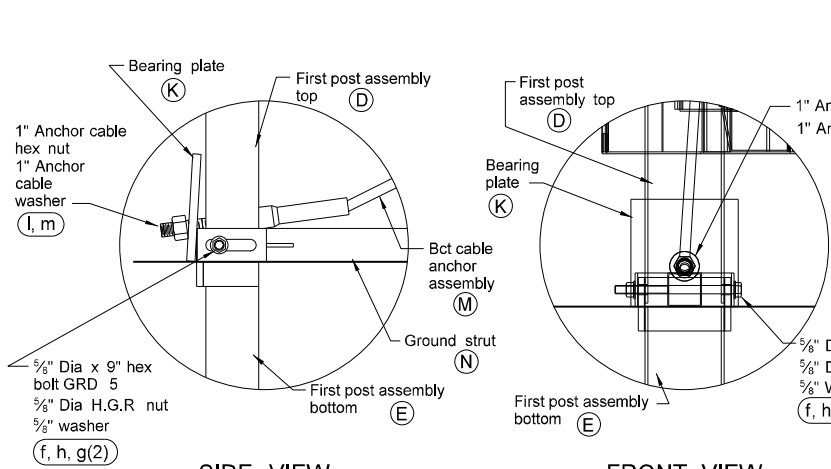
D-764-5



PLAN



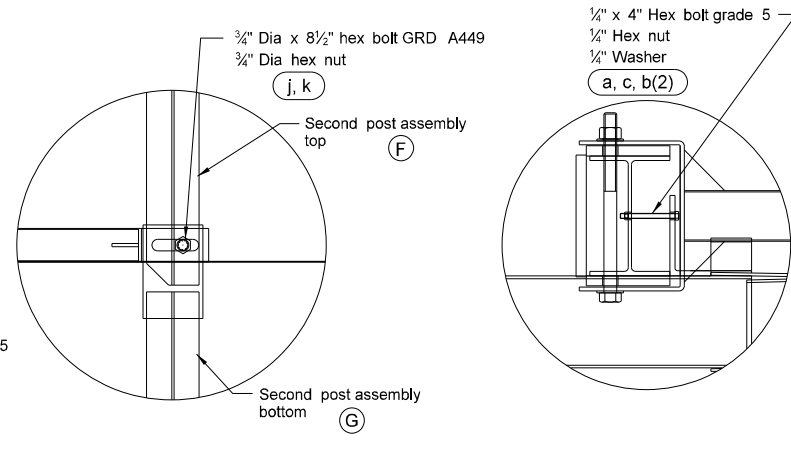
ELEVATION



SIDE VIEW

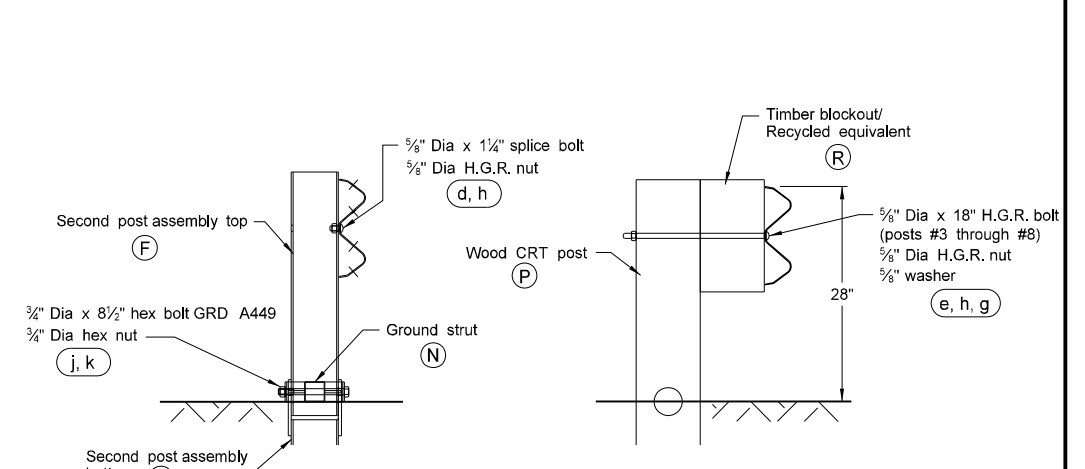
FRONT VIEW

POST #1 CONNECTION DETAILS



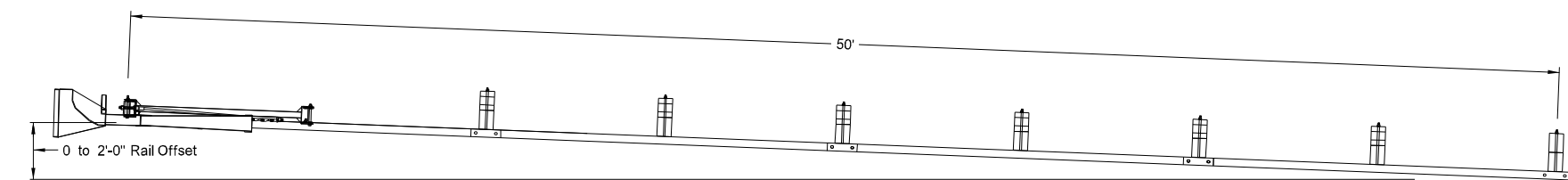
SIDE VIEW DETAIL OF POST #2

IMPACT HEAD CONNECTION DETAIL



SECTION A-A
Post #2

SECTION B-B
Posts #3 through #8



FLARED INSTALLATION
25:1 maximum flare rate

GENERAL NOTES:

- Use breakaway posts with the SKT.
- Use galvanized bolts, nuts, cable assemblies, cable anchors, and bearing plates.
- Flare the SKT at a rate of up to 25:1 to prevent shoulder encroachment by the impact head.
- Grade site as needed to prevent lower sections of the posts from protruding more than 4" above ground (measured along a 5' cord).
- Drive the lower section of the hinged posts without the upper post attached. If the post is placed in a drilled hole, compact the backfill material satisfactorily to prevent settlement.
- When rock is encountered during excavation, use a 10" diameter post hole, 20" into the rock surface, if approved by the engineer. Place granular material in the bottom of the hole, approximately 2 1/2" deep to provide drainage. Field cut posts 1 & 2 to length, place in the hole, and backfill with adequately compacted material excavated from the hole.
- Place the breakaway cable assembly taut. Use a locking device (vice grips or channel lock pliers) to prevent the cable from twisting when tightening nuts.
- "Toe nail" the wood blockouts on post #3 through post #8 with two 20 penny galvanized nails in each rectangular post, to prevent them from turning when the wood shrinks.

BILL OF MATERIALS		
ITEM	QTY	
A	1	IMPACT HEAD
B	1	W-BEAM GUARDRAIL END SECTION, 12 Ga
C	3	W-BEAM GUARDRAIL, 12 Ga
D	1	FIRST POST ASSEMBLY TOP
E	1	FIRST POST ASSEMBLY BOTTOM
F	1	SECOND POST ASSEMBLY TOP
G	1	SECOND POST ASSEMBLY BOTTOM
K	1	BEARING PLATE
L	1	CABLE ANCHOR BOX
M	1	BCT CABLE ANCHOR ASSEMBLY
N	1	GROUND STRUT HINGED POST
P	6	WOOD CRT POST
R	6	TIMBER BLOCKOUT/RCY EQUIVALENT
HARDWARE		
a	2	1/4 " x 4" HEX BOLT Grade 5
b	4	1/2" WASHER
c	2	1/4" HEX NUT
d	25	5/8" Dia X 1 1/4" SPLICE BOLT, POST #2
e	6	5/8" Dia X 18" H.G.R. BOLT (POSTS 3 THRU 8)
f	1	5/8" Dia X 9" HEX BOLT GRD 5
g	8	5/8" WASHER
h	32	5/8" Dia H.G.R. NUT
j	1	3/4" Dia X 8 1/2" HEX BOLT GRD A449
k	1	3/4" Dia HEX NUT
l	2	1" ANCHOR CABLE HEX NUT
m	2	1" ANCHOR CABLE WASHER
n	8	GROUND STRUT HINGED POST
o	8	1/2" A325 STRUCTURAL NUT
p	16	1 1/8" OD X 5/8" ID A325 STR. WASHER

NORTH DAKOTA DEPARTMENT OF TRANSPORTATION	
10-11-13	
REVISIONS	
DATE	CHANGE
12-02-20	Updated notes to active voice.

KIRK J. HOFF
REGISTERED
Kirk J Hoff
PROFESSIONAL
PE-4683
ENGINEER
NORTH DAKOTA
12 02 2020