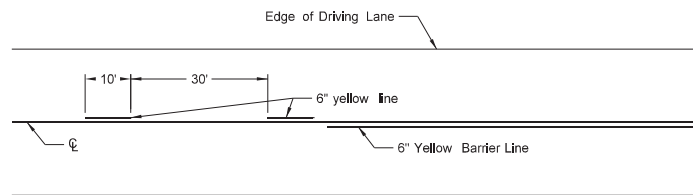
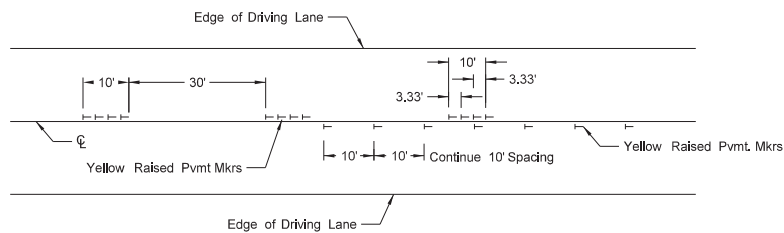


SHORT-TERM PAVEMENT MARKING

D-762-11

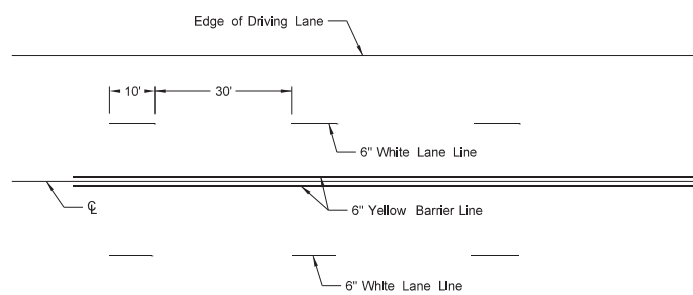


Painted or Tape Lines

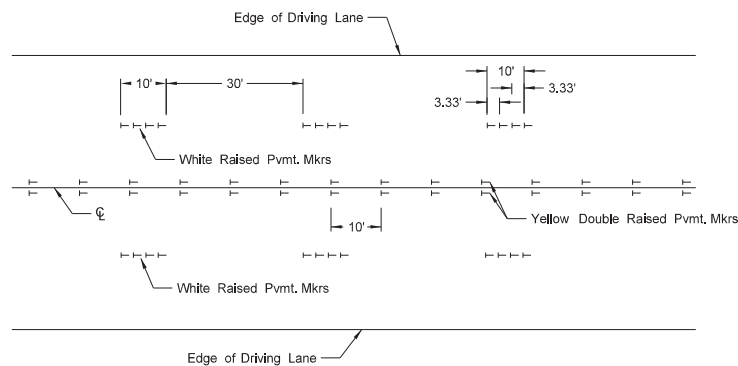


Raised Pavement Markers

TWO-LANE TWO-WAY ROADWAY

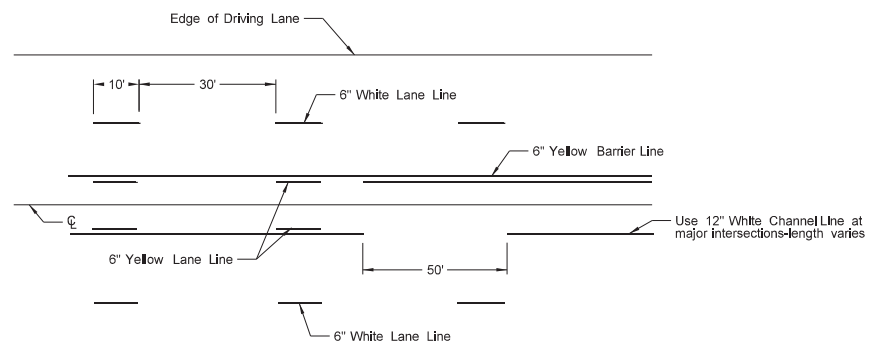


Painted or Tape Lines

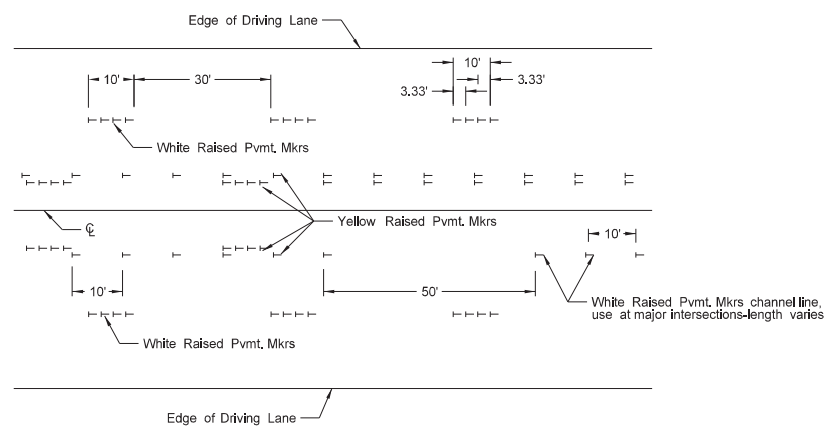


Raised Pavement Markers

FOUR LANE ROADWAY

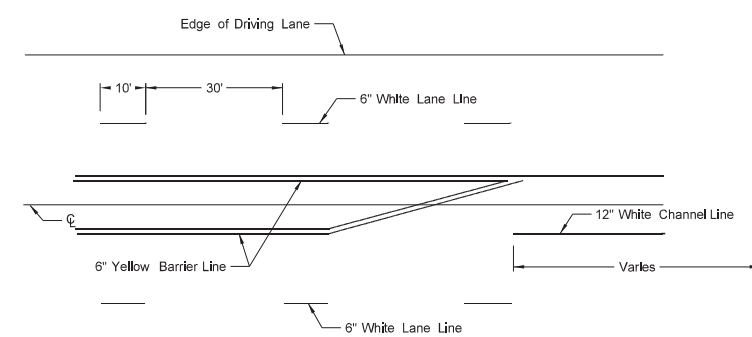


Painted or Tape Lines

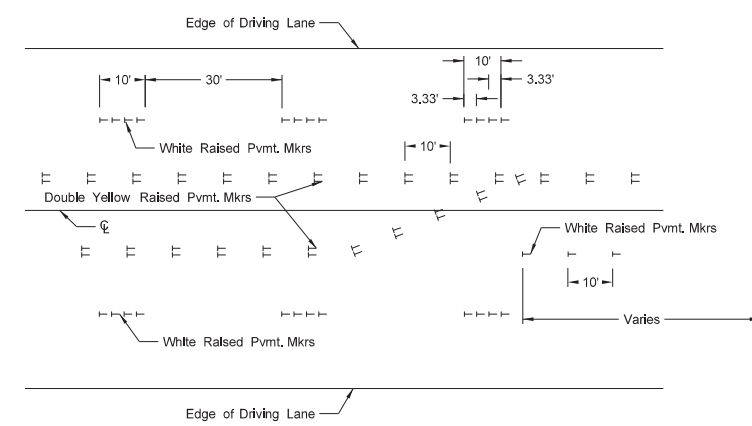


Raised Pavement Markers

FIVE LANE ROADWAY TWO WAY LEFT TURN



Painted or Tape Lines



Raised Pavement Markers

FIVE LANE ROADWAY WITH MARKED ISLANDS

NOTES:

1. Place no passing zones on two-lane two-way roadways as shown. In lieu of short term no passing zone pavement markings, place no passing zone signs. Replace no passing zone signs with short term no passing zone pavement marking within three days.
2. Place short term center line stripe (paint) on top lift to match exact placement of permanent stripe.
3. Remove raised markers and tape markings after permanent pavement marking is installed.
4. Normal width line - 6 inches wide for freeways, expressways, and ramps; 6 inches for all other roadways with speed limits > 40 mph.
5. Use 4 or 6 inch wide pavement marking for all other roadways with speed limits ≤ 40 mph.
6. Wide lines - 8 inches wide if 4 inch normal width lines are used and 12 inches wide if 6 inch normal width lines are used.

| NORTH DAKOTA DEPARTMENT OF TRANSPORTATION | |
|--|---|
| 12-1-10 | |
| REVISIONS | |
| DATE | CHANGE |
| 3-29-16 | Re-numbered to be D-762-11 (previously was D-762-6) |
| 10-17-17 | Updated to active voice. |
| 8-27-19 | New Desgn Engineer PE Stamp. |
| 11-22-23 | Revised pavement marking widths |
| 1-17-24 | Revised wide pvmt marking width. |

