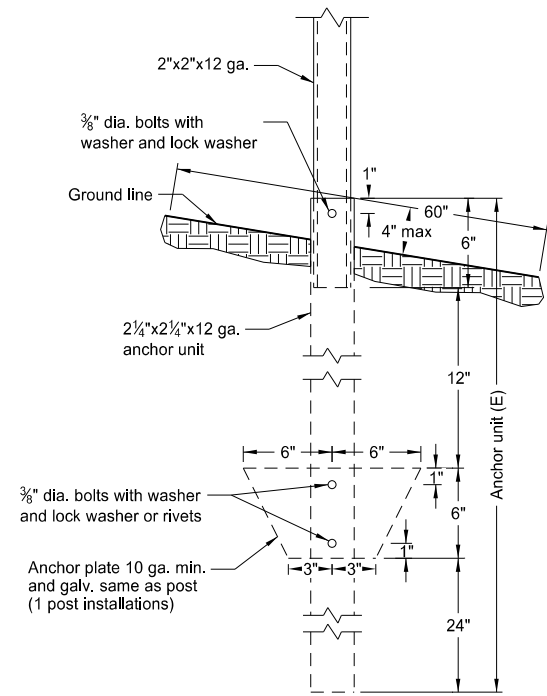
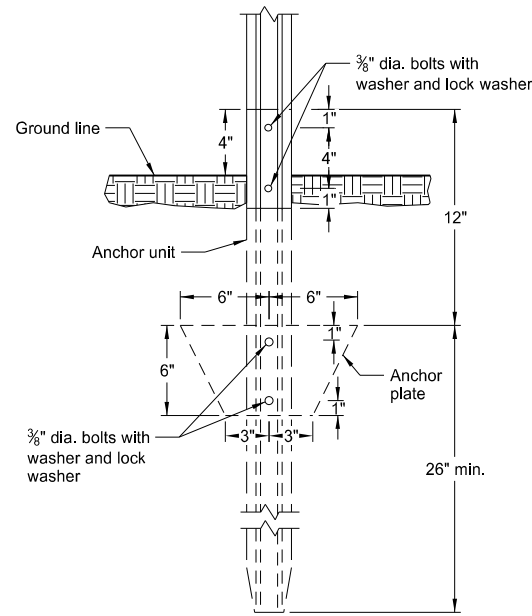


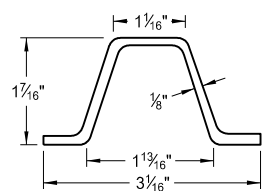
OBJECT MARKERS



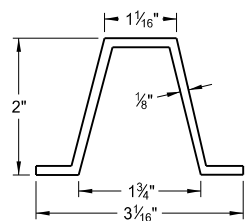
Perforated Tube Anchor Unit Assembly



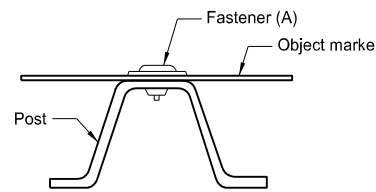
U-Channel Anchor Unit Assembly



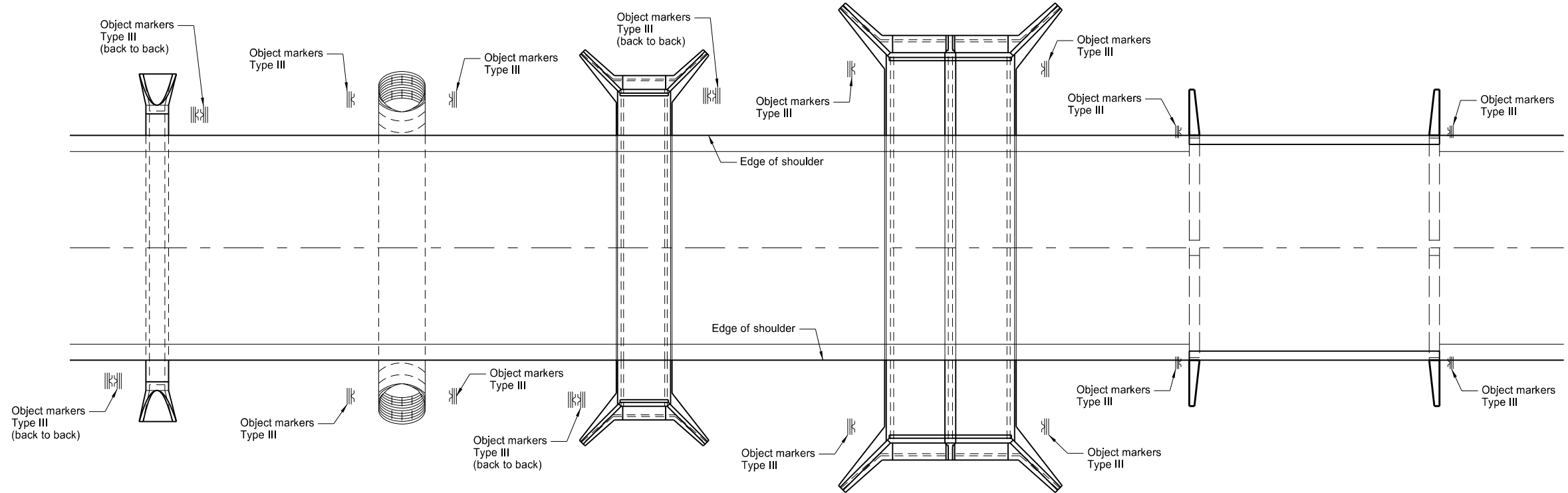
Steel Post Detail
Approx. 2 lb/ft



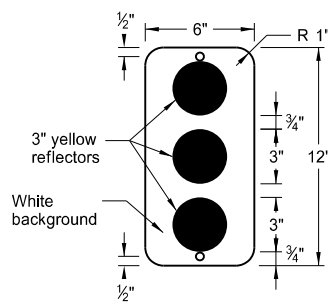
Aluminum Post Detail
Approx. 0.88 lb/ft



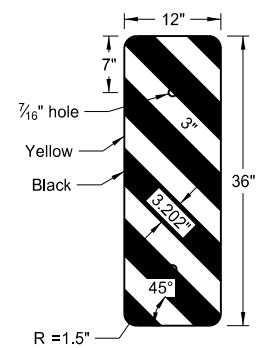
Fastener Detail



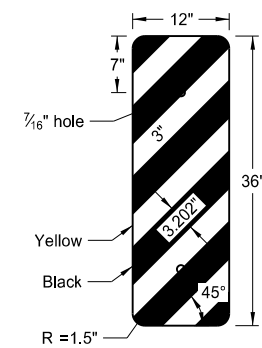
Pipe Culverts 10' max Pipe Culverts greater than 10' Box Culverts 10' max Box Culverts greater than 10' Bridges (B)



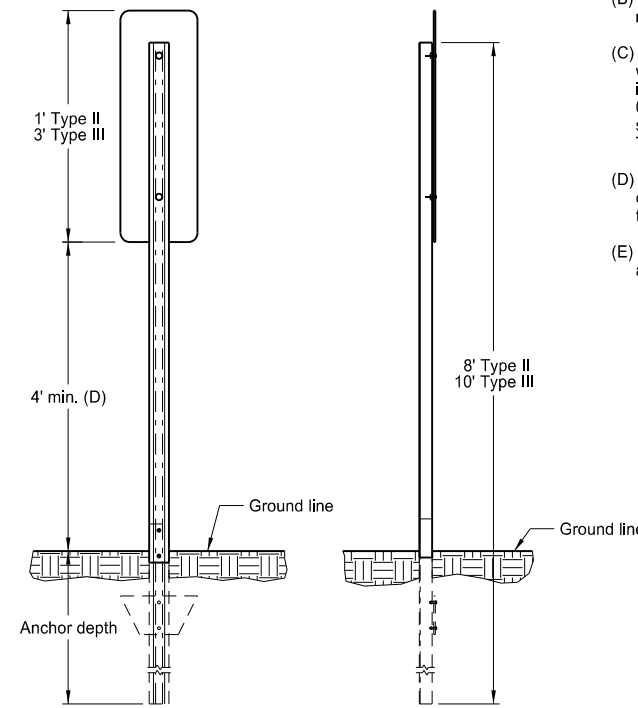
Object Marker OM2-1V (C)
Type II



Object Marker Left OM-3L (C)
Type III



Object Marker Right OM-3R (C)
Type III



Object Marker Installation Detail

Notes:

- (A) Use 3/8" dia. tension pin type or other non-rust vandal resistant fastener with min. outside dia. 1 3/16" flat washer.
- (B) At locations of approach guardrail with reflectors and end terminal with impact head object markers, do not install object markers.
- (C) Use two object markers for back to back mountings. On bridges where the distance between wheel guards is less than the approach width, mount object markers vertically on steel posts in front of the bridge railing on each side of highway to mark the horizontal clearance. Use 0.100" minimum thickness sheet aluminum for sign backing material. Use ASTM Type XI sheeting for Type III object markers and ASTM Type IV background sheeting with ASTM Type XI reflectors for Type II object markers.
- (D) When object marker is located 8' or less from shoulder or curb, provide 4' minimum vertical clearance from near edge of traveled way to bottom of sign. When located more than 8' from shoulder or curb provide 4' minimum vertical clearance from ground to bottom of sign.
- (E) Use 4" vertical clearance for anchor or breakaway base. Provide 4"x60" measurement above and below post location and back and ahead of post.

NORTH DAKOTA DEPARTMENT OF TRANSPORTATION	
10-3-13	
REVISIONS	
DATE	CHANGE
7-18-14	Revised Note C
8-30-18	Updated notes to active voice and removed note.
9-05-19	New Design Engineer PE Stamp.

This document was originally issued and sealed by
 Kirk J Hoff,
 Registration Number
 PE- 4683,
 on 9/05/19 and the original document is stored at the North Dakota Department of Transportation