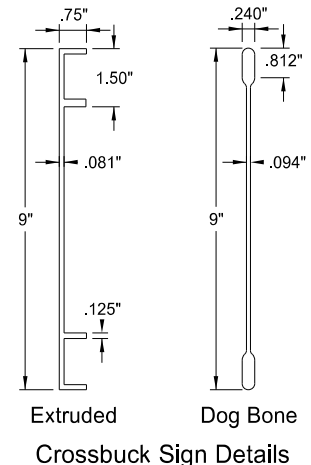
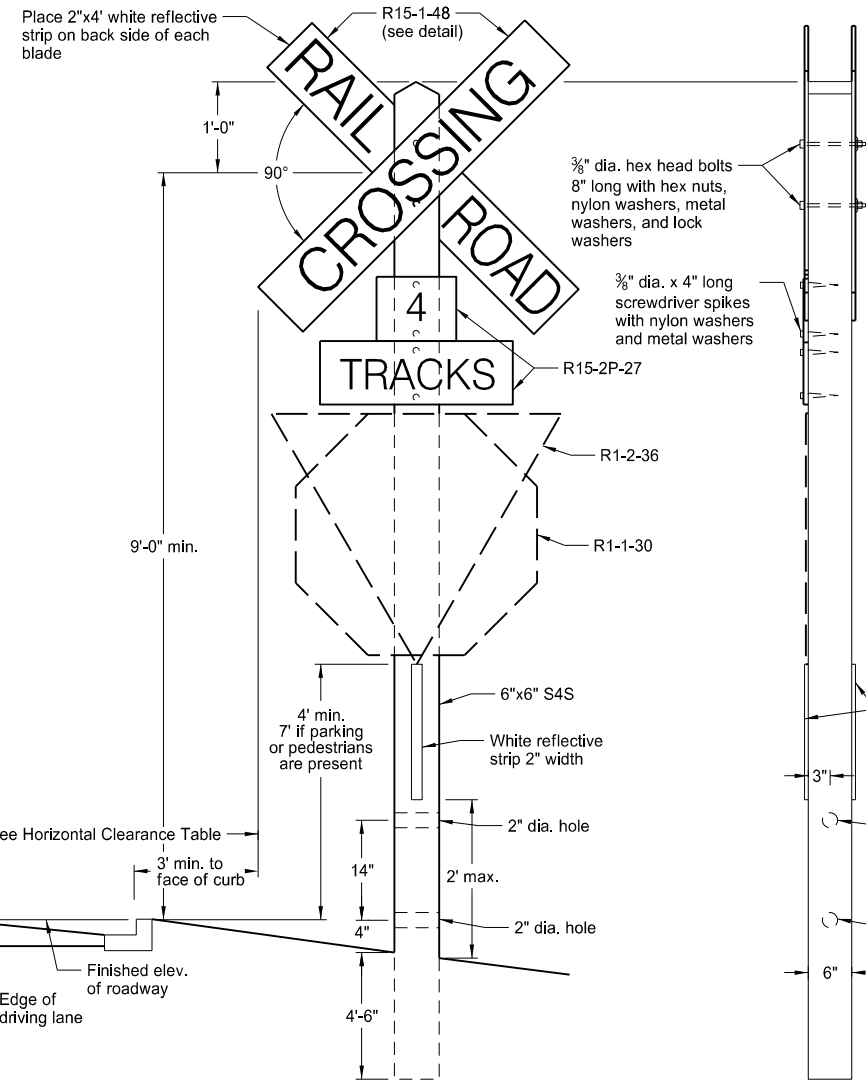


RAILROAD CROSSING SIGNS FOR PASSIVE GRADE CROSSINGS



Horizontal Clearance Table	
Shoulder Width ft	Offset ft
0 to 2	16
>2 to 4	18
>4 to 6	20
>6 to 8	22
>8 to 10	24

Notes:

See MUTCD for placement of Grade Crossing Warning Signs.

When distance between tracks exceeds 100', consider additional sign assemblies to inform the public.

Use metal washers and nylon washers with a minimum outside diameter of $\frac{5}{16}'' \pm \frac{1}{16}''$ and 10 gauge thickness on the sign face.

Where there are two or more tracks, use track number signs (R15-2P-27) to display the number of tracks being crossed.

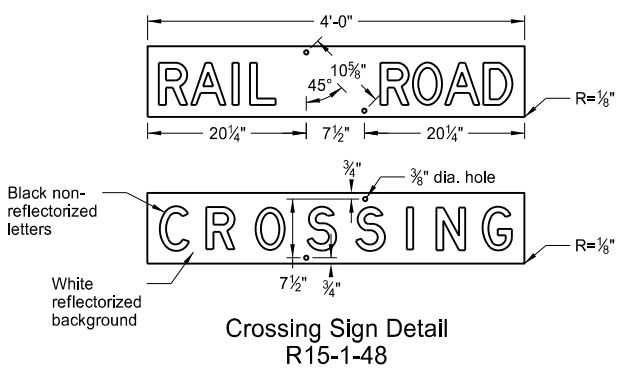
Use No. 1 white pine, fir, spruce, western hemlock, cedar, or western larch sign supports. Use sign supports free of heart centers, and in compliance with the Standard Grading Rules of the American Lumber Standards. Treat post in conformance with Section 846 of the Standard Specifications. Use wood post surfaced on all four sides (S4S).

Use sign material meeting ASTM D-4956 Type XI. On the crossing and track number sign, screen the message or apply non-reflective plastic film letters.

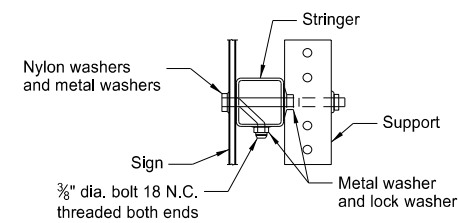
When extruded aluminum sign backing is used and the stiffener ribs are $\frac{1}{2}''$ from the edge, space the holes at $5\frac{1}{16}''$ from the center of the signs.

Rotate bolt location 90° as shown in the Crossing Sign Detail.

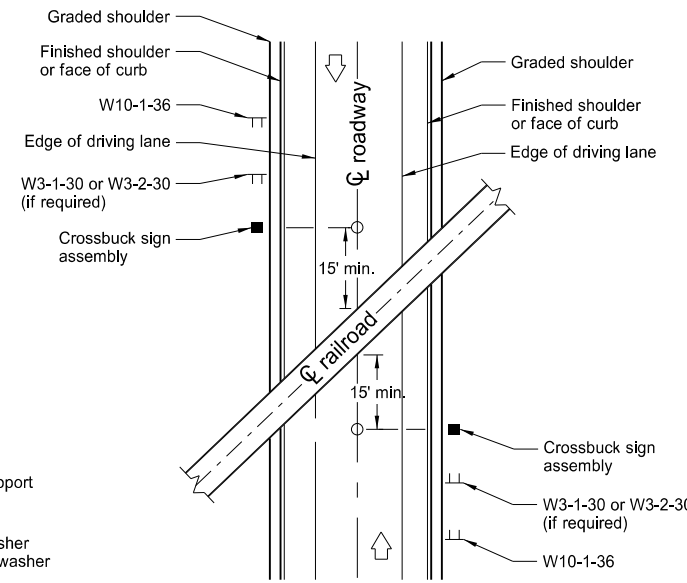
Crossing Sign Assembly



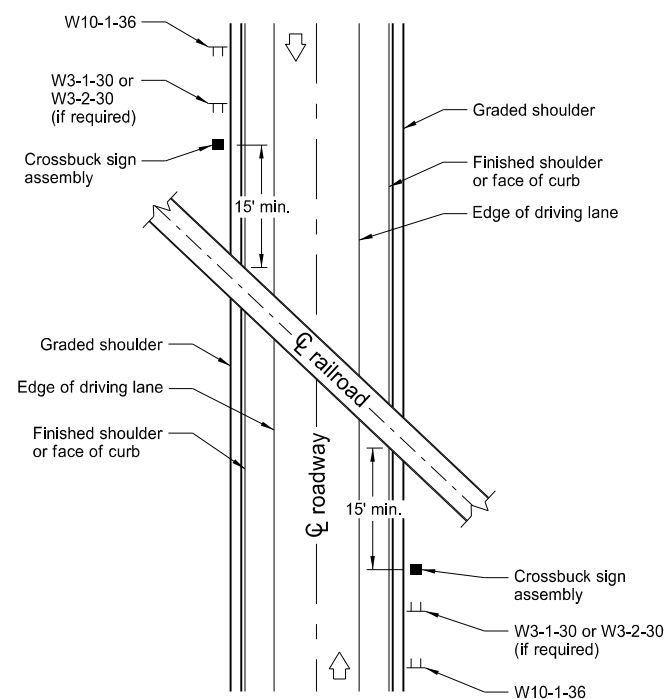
Crossing Sign Detail R15-1-48



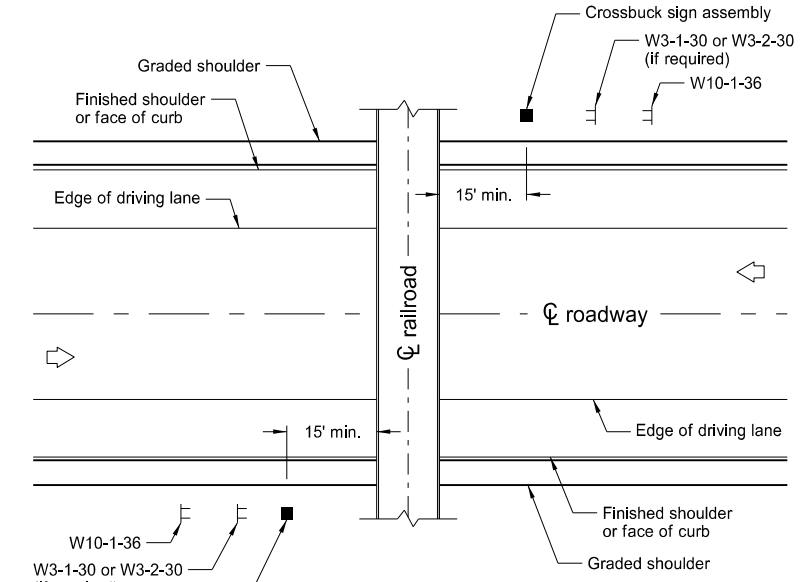
Section A-A



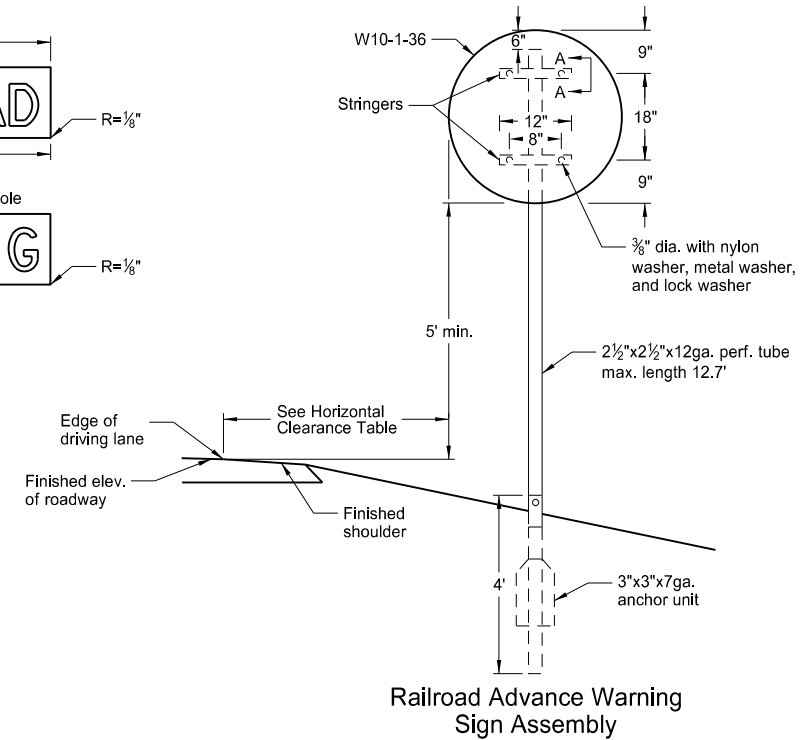
Layout for Obtuse Angle Intersection



Layout for Acute Angle Intersection



Layout for Right Angle Intersection



Railroad Advance Warning Sign Assembly

NORTH DAKOTA DEPARTMENT OF TRANSPORTATION	
10-10-13	
REVISIONS	
DATE	CHANGE
11-4-13	Anchor Unit detail was removed.
10-25-19	Updated notes to active voice.

This document was originally issued and sealed by Kirk J Hoff, Registration Number PE-4683, on 10/25/19 and the original document is stored at the North Dakota Department of Transportation