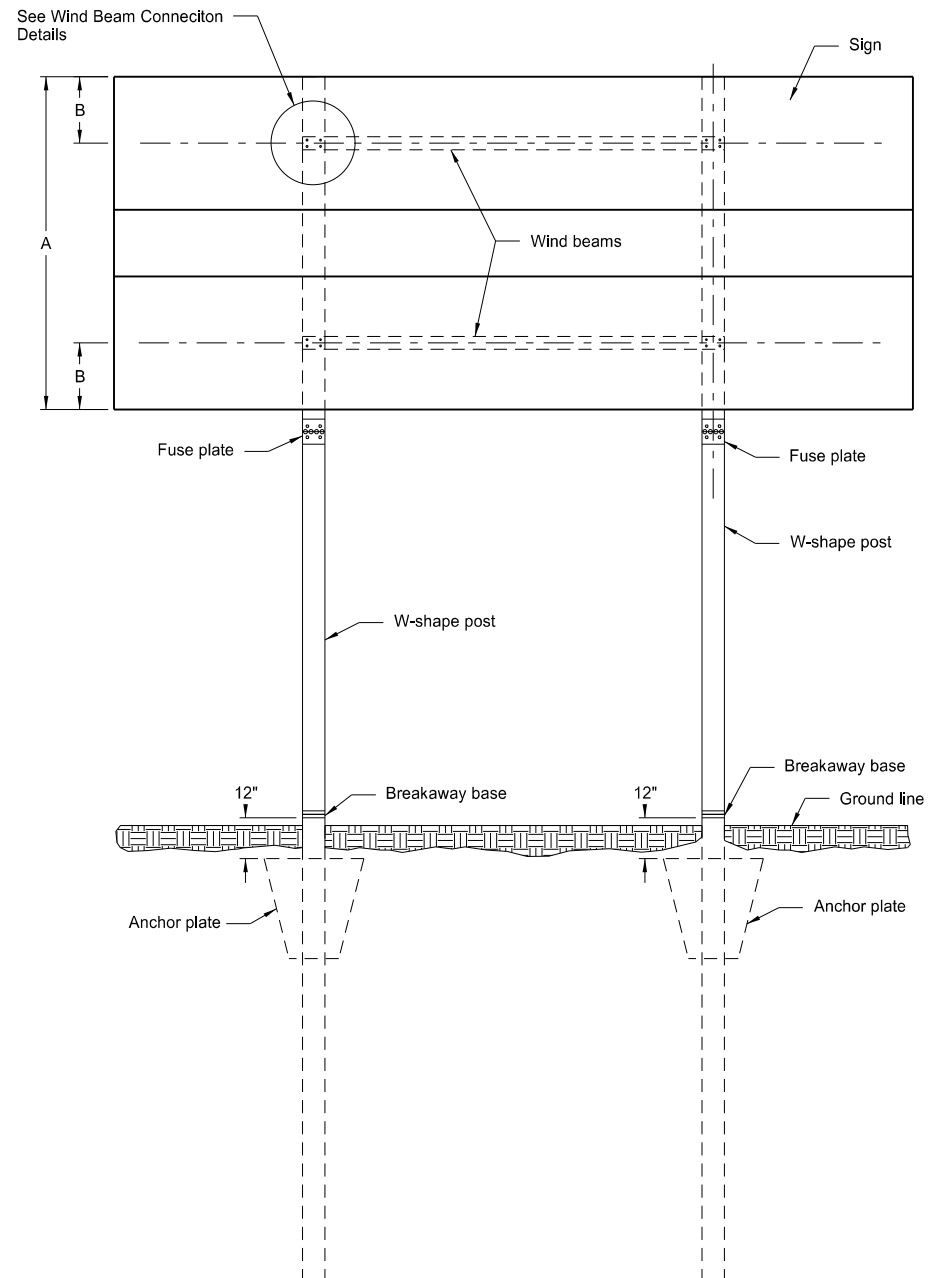
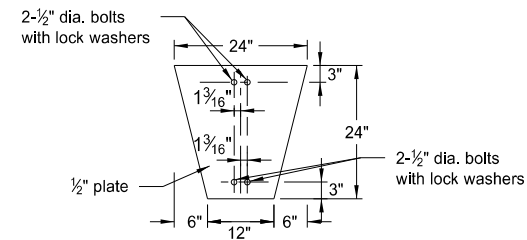


WIND BEAMS AND ANCHOR PLATES
FOR W-SHAPE SUPPORTS

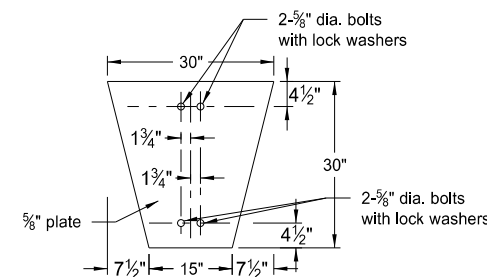


ASSEMBLY DETAIL
FOR WIND BEAMS
AND ANCHOR PLATES

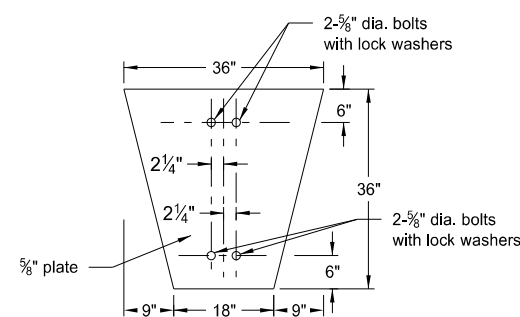
Notes:
Calculate the B distance using the formula, $B=A/4$.
Use wind beam conforming to Section 894.03 B.6 of the Standard Specifications.
Use bolts conforming to ASTM A307 and galvanized according to ASTM A153.



W4-13 & W5-16

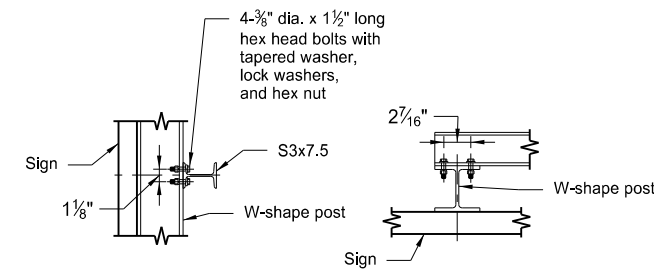


W6-20, W8-24 & W8-28

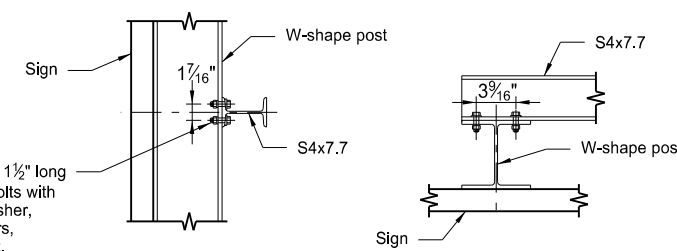


W8-31 & W10-39

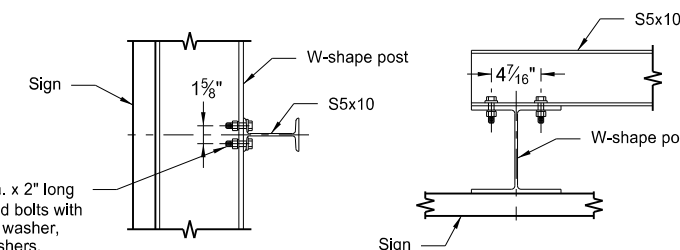
ANCHOR PLATE DETAILS



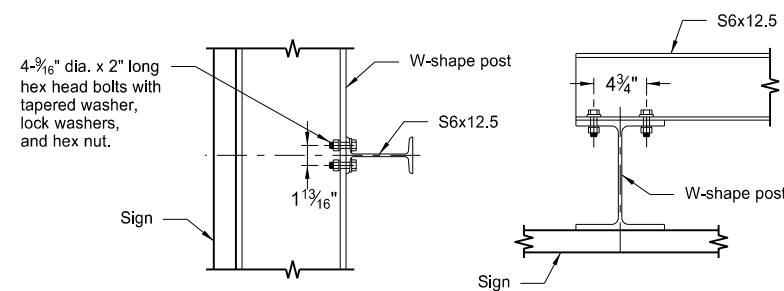
End View
Top View
W4-13 & W5-16



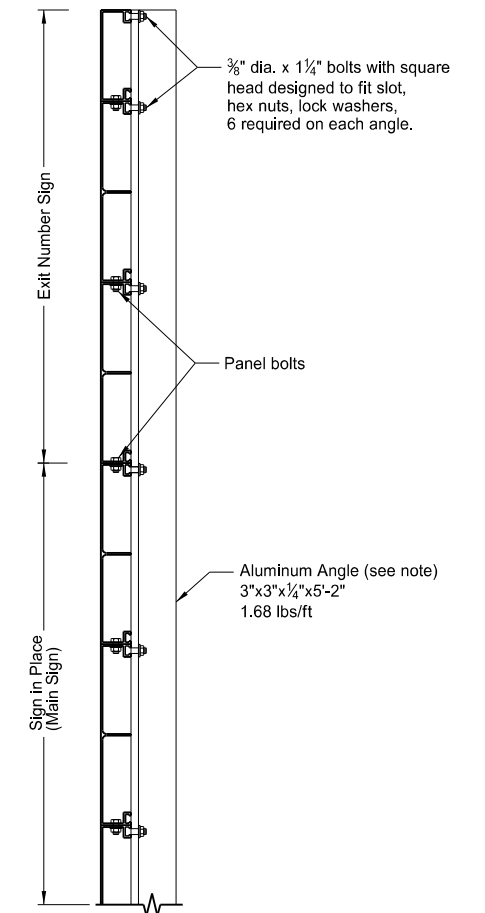
End View
Top View
W6-20, W8-24 and W8-28



End View
Top View
W8-31



End View
Top View
W10-39
WIND BEAM CONNECTION DETAILS



ASSEMBLY DETAIL FOR
EXIT NUMBER SIGNS

Note: Use two aluminum angles on each sign. Vary distance between angles dependent on post spacing of sign in place. Place angles as near as possible to posts. The Engineer will determine exact location.

NORTH DAKOTA DEPARTMENT OF TRANSPORTATION	
10-3-13	
REVISIONS	
DATE	CHANGE
7-8-14	Revised second note.
8-30-18	Updated notes to active voice.
8-29-19	New Design Engineer PE Stamp.

This document was originally issued and sealed by
Kirk J Hoff,
Registration Number
PE- 4683,
on 8/29/19 and the original document is stored at the North Dakota Department of Transportation