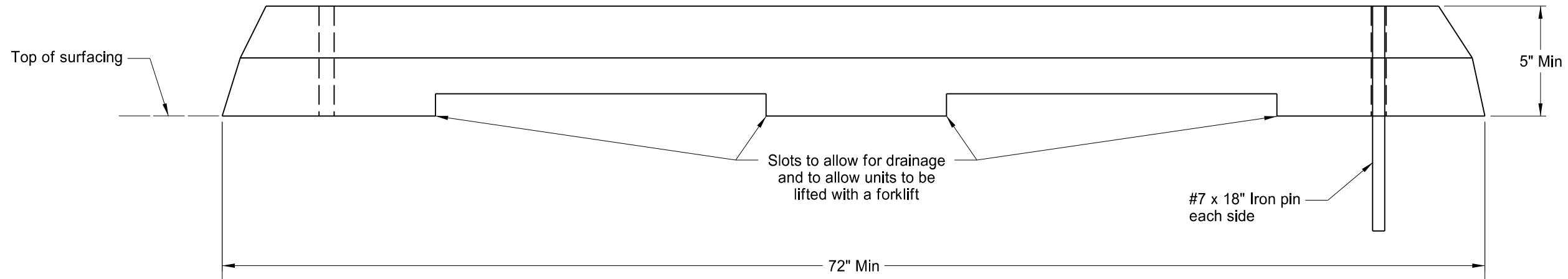
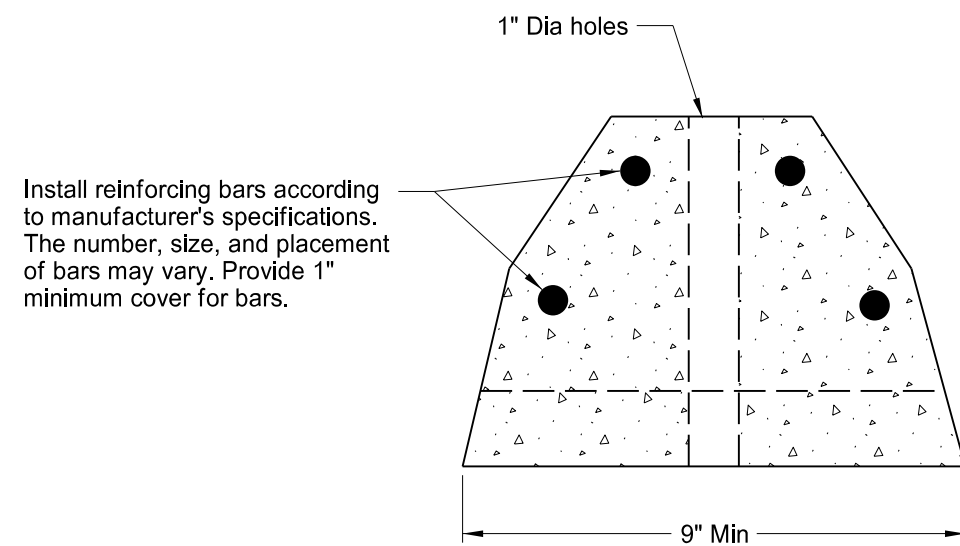


PRECAST CONCRETE WHEEL STOP

D-748-3



SIDE VIEW



SECTION

NOTES:

Description:
Furnish and install concrete wheel stops in locations shown on the plans or designated by the Engineer.

Materials:
Use size 3, 4, or 5 coarse aggregate for concrete.

Construction Details:
Set precast wheel stop on top of pavement with both ends bearing evenly on the pavement. Drive an iron pin into the underlying pavement through the hole at each end of the wheel stop. If necessary, pre-drill a hole in the pavement.

Method of Measurement & Basis of Payment:
Include all costs for materials, labor, tools, equipment, and incidentals necessary to install precast concrete wheel stops at the locations designated on the plans in the unit price bid for "Precast Concrete Wheel Stop."

NORTH DAKOTA DEPARTMENT OF TRANSPORTATION	
07-19-10	
REVISIONS	
DATE	CHANGE
10-17-17 08-27-19	Updated to active voice. New Design Engineer PE Stamp.

This document was originally issued and sealed by
Kirk Hoff,
Registration Number
PE- 4683,
on 8-27-19 and the original document is stored at the
North Dakota Department
of Transportation