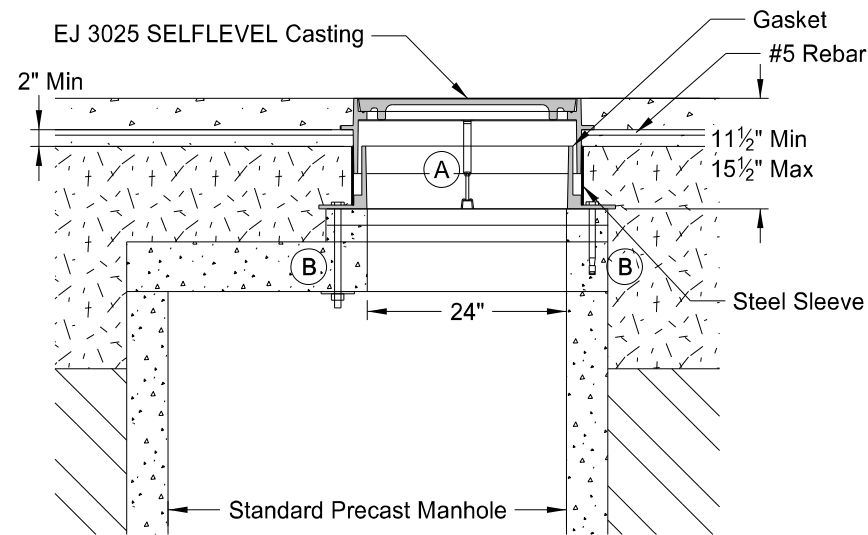
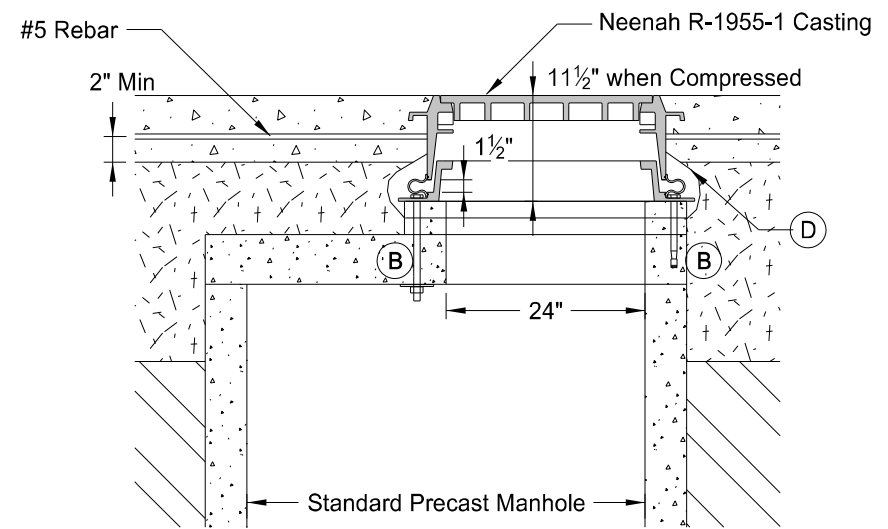


FLOATING MANHOLE CASTING

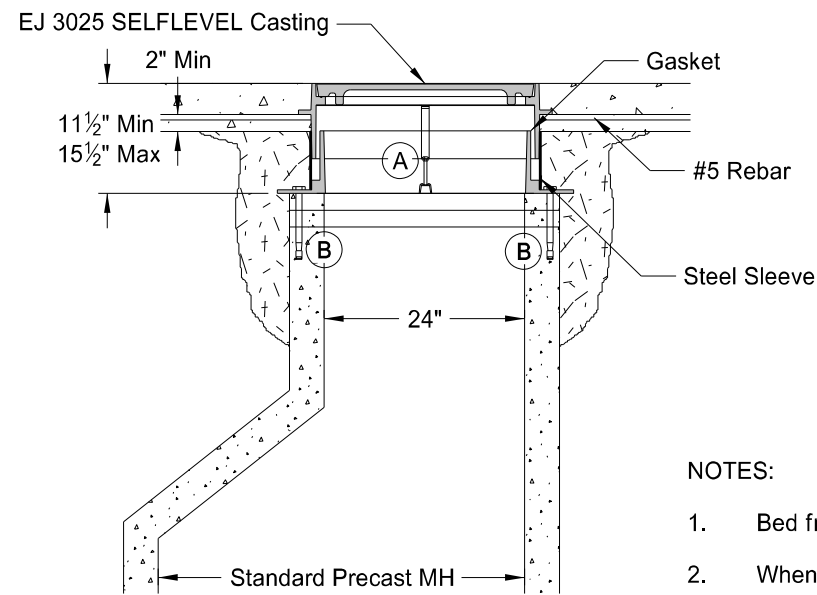
D-722-5A



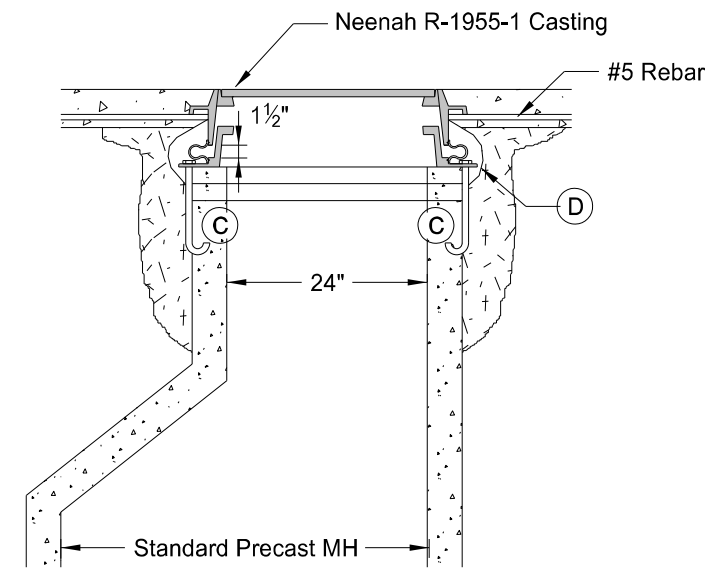
ELEVATION VIEW OF CONNECTION TO STANDARD PRECAST MANHOLE - TYPICAL



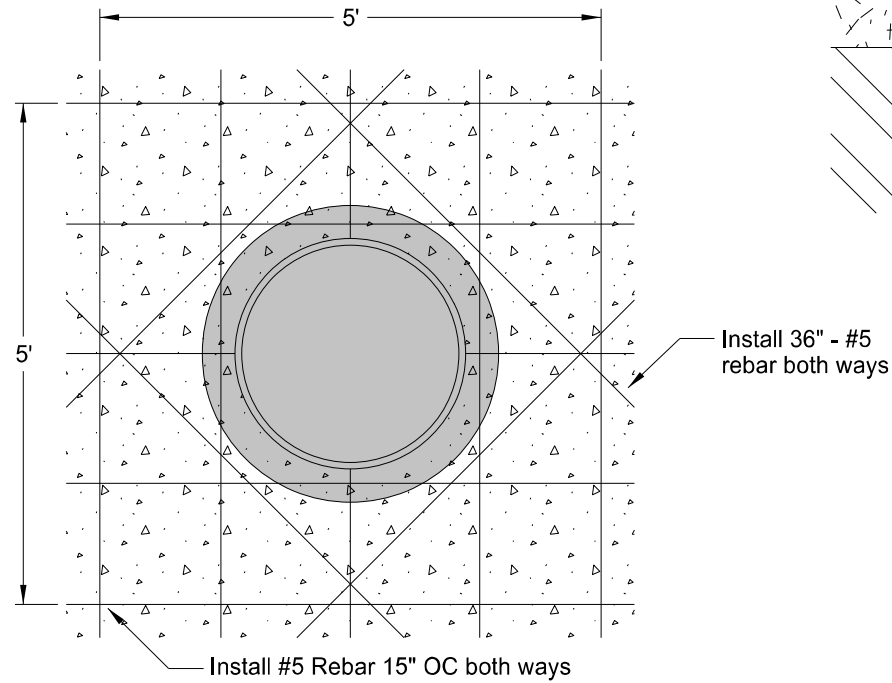
ELEVATION VIEW OF CONNECTION TO STANDARD PRECAST MANHOLE - TYPICAL



ELEVATION VIEW OF CONNECTION TO CONICAL MANHOLE - TYPICAL



ELEVATION VIEW OF CONNECTION TO CONICAL MANHOLE - TYPICAL

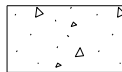
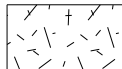


REBAR LAYOUT

NOTES:

1. Bed frame in mortar, install precast two-inch rings, and plaster inside and out with mortar.
 2. When installing an existing box out, drill 20" - #5 rebar into existing pavement 6" deep - 15" OC.
 3. The length of anchor bolts varies with the number of adjusting rings.
 4. Include installation costs at existing locations in the unit price bid for "MANHOLE CASTING TYPE ____."
 5. Include installation costs at new manhole locations in the unit price bid for "MANHOLE ____ IN."
- (A) (3) 6" full thread adjusting bolt and bracket (Remove after concrete cures.)
- (B) Provide 3/4" diameter stainless steel bolts, nut assemblies, and 1/2"x4"x4" plates to extend through the manhole cover, or provide anchor bolts to extend a minimum of 4" into the MH cover. Provide 4 bolts per casting.
- (C) Provide 3/4" diameter stainless steel bolts with nuts to extend 5" below the adjusting rings. Provide 4 bolts per casting.
- (D) Wrap and tape 6 mil polyethelene on casting above the rubber gasket and tape to adjusting rings below the gasket.

KEY:

-  Portland Cement Concrete Pavement
-  Granular Backfill

NORTH DAKOTA DEPARTMENT OF TRANSPORTATION	
12-2-20	
REVISIONS	
DATE	CHANGE

KIRK J. HOFF
REGISTERED
PROFESSIONAL
PE-4683
ENGINEER
NORTH DAKOTA
12 02 2020