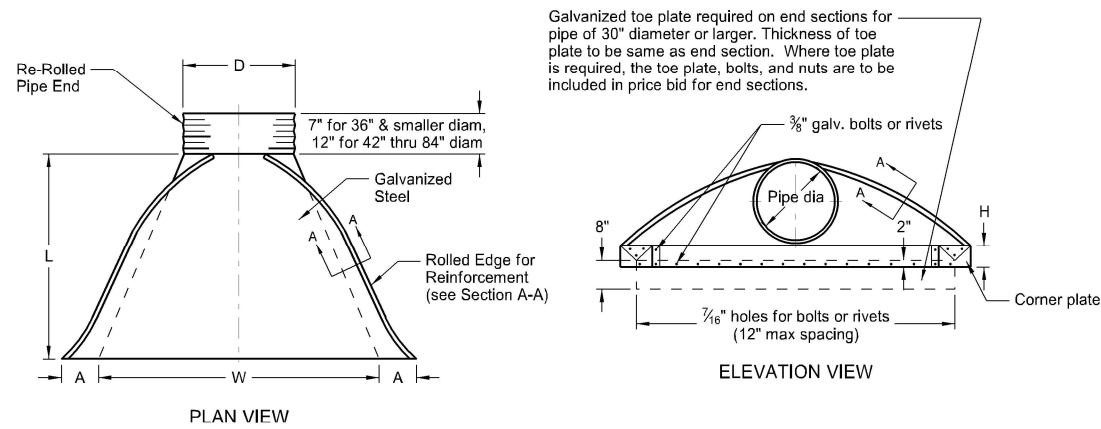
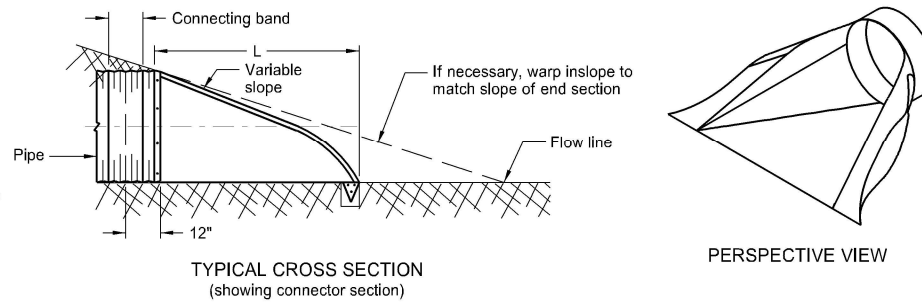


ROUND CORRUGATED STEEL PIPE CULVERTS AND END SECTIONS

D-714-4



Galvanized toe plate required on end sections for pipe of 30" diameter or larger. Thickness of toe plate to be same as end section. Where toe plate is required, the toe plate, bolts, and nuts are to be included in price bid for end sections.



PIPE DIA.	GALVANIZED THICKNESS	END SECTION DIMENSIONS					APPROX. SLOPE	BODY
		A	B	H	L	W		
15	0.064 - 0.079	7	8	6	26	30	2½:1	1
18	0.064 - 0.109	8	10	6	31	36	2½:1	1
24	0.064 - 0.109	10	13	6	41	48	2½:1	1
30	0.064 - 0.109	12	16	8	51	60	2½:1	1 or 2
36	0.064 - 0.109	14	19	9	60	72	2½:1	2
42	0.064 - 0.138	16	22	11	69	84	2½:1	2
48	0.064 - 0.168	18	27	12	78	90	2½:1	2
54	0.064 - 0.168	18	30	12	84	102	2:1	2
*60	0.064 - 0.168	18	33	12	87	114	1½:1	3
*66	0.064 - 0.168	18	36	12	87	120	1½:1	3
*72	0.064 - 0.168	18	39	12	87	126	1½:1	3
*78	0.064 - 0.168	18	42	12	87	132	1½:1	3
*84	0.064 - 0.168	18	45	12	87	138	1½:1	3

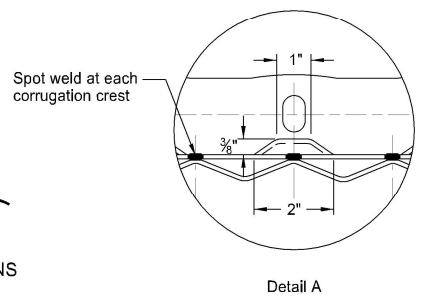
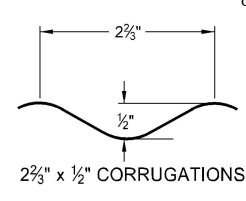
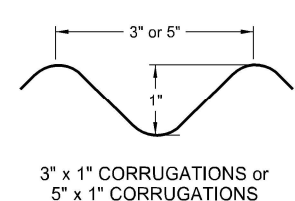
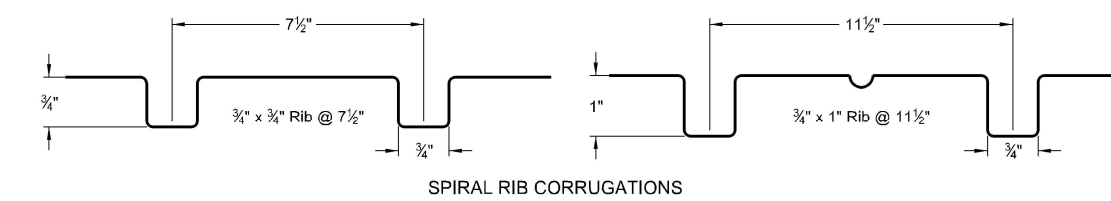
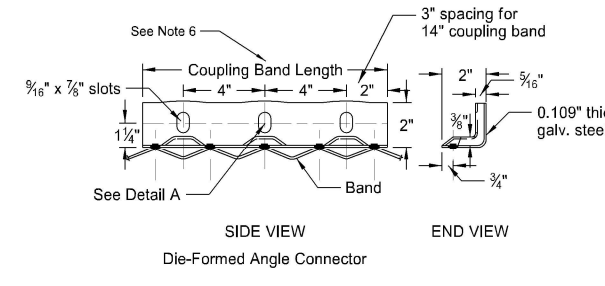
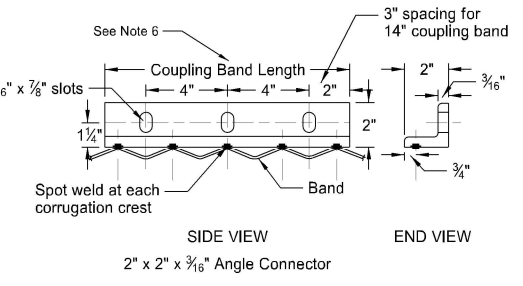
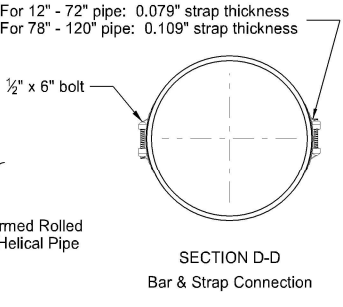
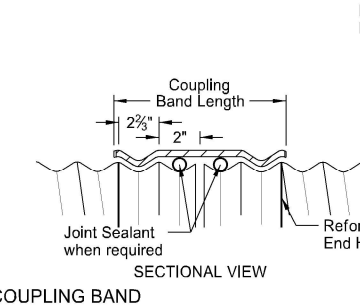
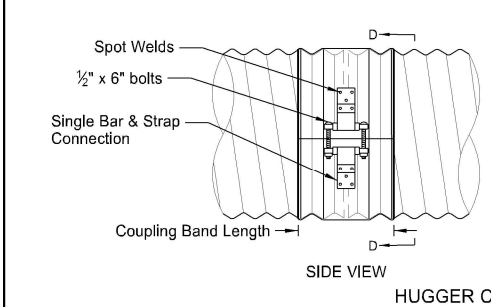
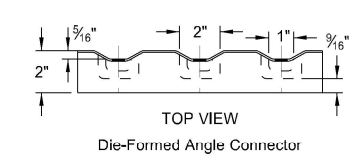
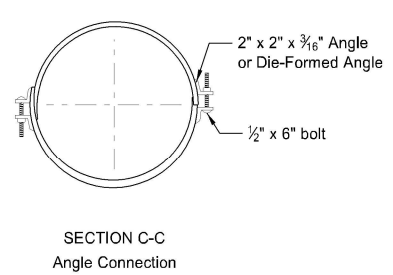
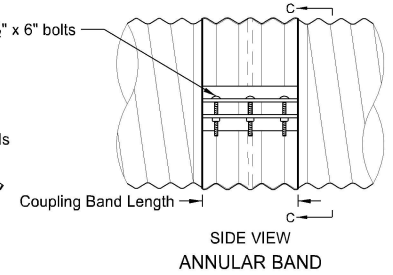
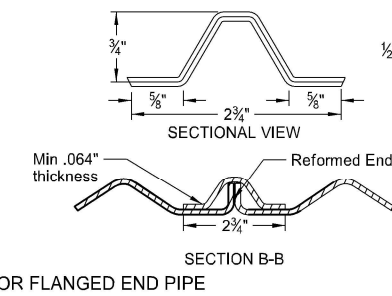
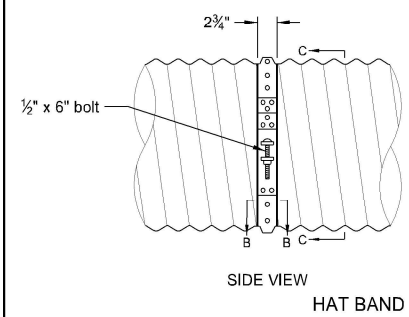
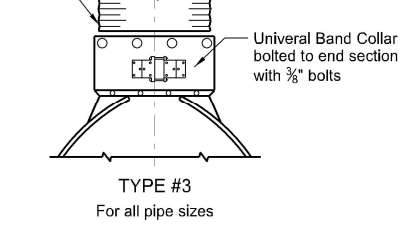
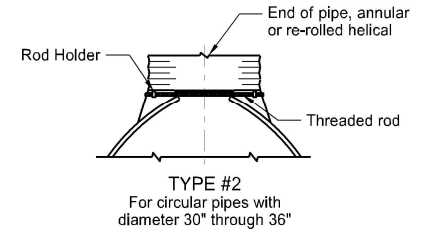
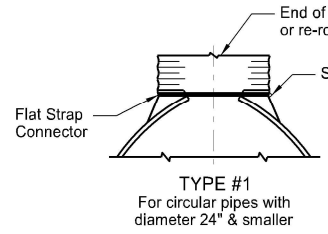
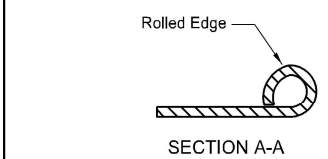
- * These sizes have 0.109" sides and 0.138" center panels.
 - * * Pipe diameter is equal to dimension "D" of end section.
- Manufacturers tolerances of above dimensions will be allowed.
- Splices to be the lap riveted type.

Multiple panel bodies shall have lap seams which are to be tightly joined with ¾" dia. galv. bolts or rivets. Nuts to be torqued to 25 foot-lbs ±.

NOTES:

- Pipes and connecting bands shall conform to applicable sections of NDDOT Standard Specifications and to AASHTO M-36.
- Top edge of all end sections to have rolled edges for reinforcement (see Section A-A). The reinforced edges are to be supplemented with 2" x 2" x ¼" galv. angle for 60" through 72" dia. and 2½" x 2½" x ¼" galv. angle for 78" and 84" dia.. Angles to be attached by galv. ¾" dia. bolts and nuts. Angles are to extend from pipe to the corner wing bend.
- Elongated pipes shall be factory preformed so that the vertical diameter shall be 5% greater and the horizontal diameter 5% less than a circular pipe.
- Coupling bands shall be two-piece for pipes larger than 36" as shown in Section C-C & D-D details. For pipes 36" and smaller, a one-piece band is acceptable.
- ½" x 8" bolts may be used as a substitute for the ½" x 6" bolts shown in the details.
- Coupling bands wider than 14" may be used if a minimum of four ½" bolts with maximum spacing of 5½" are used for the connection.
- Length of spot welds shall be minimum ½".

COUPLING BAND DIMENSIONS				
COUPLING TYPE	CORRUGATION PITCH x DEPTH	PIPE SIZE	COUPLING BAND LENGTH	MIN. BAND THICKNESS
Hat Band	2½" x ½"	12" - 48"	2¾"	.064"
		12" - 72"	12"	.052"
Annular Band	2½" x ½"	78" - 84"	12"	.079"
		48" - 120"	14"	.052"
Hugger Band	2½" x ½" Rerolled End	12" - 72"	10½"	.052"
		78" - 84"	10½"	.079"
	3" x 1" Rerolled End	48" - 120"	10½"	.052"
		48" - 120"	12"	.064"



NORTH DAKOTA DEPARTMENT OF TRANSPORTATION	
08-16-13	
REVISIONS	
DATE	CHANGE
01-07-14	End Section Plan View
02-27-14	3" x 1" Corrugation Detail
09-18-19	Added Perspective View Detail
09-23-22	Galvanized Thickness Table

Professional Engineer Seal for **THAN D KETTER**, PE-4684, State of North Dakota. The seal is circular with the text 'NORTH DAKOTA ENGINEER' and 'PROFESSIONAL PE-4684'. A signature is written across the seal.

09/23/22