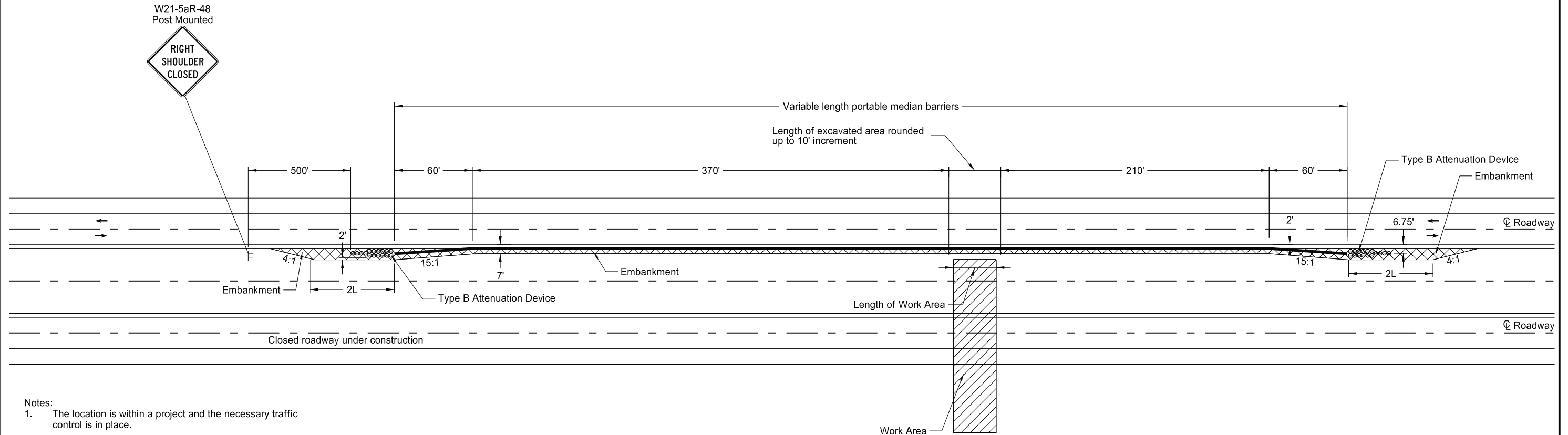


Two-way, Two-lane Operation on Divided Highway With Excavation in the Median

D-704-57



- Notes:
1. The location is within a project and the necessary traffic control is in place.
 2. Install Portable Median Barriers when excavation is within clear zone and 1 foot or more in depth.

L = length of attenuation device

KEY	
⏏	Flagger
⏏	Sign
▨	Embankment
▨	Work Area
⊗	Attenuation Device
—	Portable Median Barriers

ADVANCE WARNING SIGN SPACING			
Road Type	Distance Between Signs Min. (ft)		
	A	B	C
Urban - Low Speed (30 mph or less)	150	150	150
Urban - Low Speed (over 30 to 40 mph)	280	280	280
Urban - High Speed (over 40 mph to 50 mph)	360	360	360
Rural - High Speed (over 50 mph to 65 mph)	720	720	720
Urban Expressway and Freeway (55 mph to 60 mph)	850	1350	2200
Rural Expressway and Freeway (70 mph to 75 mph)	1000	1500	2640
Interstate/4-Lane Divided (Maintenance and Surveying)	750	1000	1500

NORTH DAKOTA DEPARTMENT OF TRANSPORTATION	
9-18-15	
REVISIONS	
DATE	CHANGE
9-18-15	Revised Standard Description
9-27-17	Updated to active voice
10-09-19	New Design Engineer PE Stamp
8-21-24	Renamed Portable Median Barrier



08/21/24