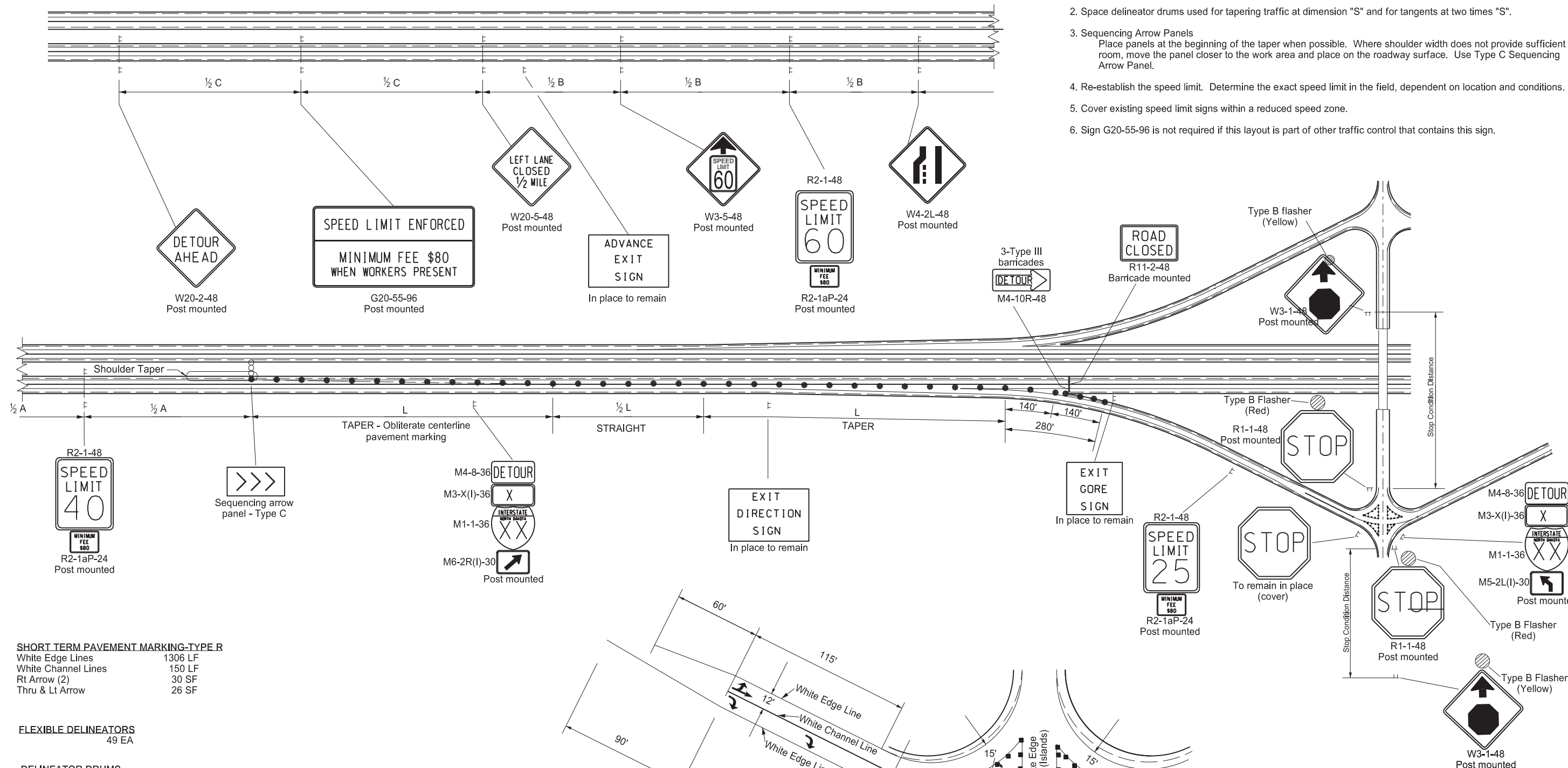


INTERSTATE ROAD CLOSURE USING RAMPS CLOSURE FOR MORE THAN FIVE DAYS and Crossroad is not Closed

- Notes:
- Variables
 S = Numerical value of speed limit or 85th percentile prior to work starting.
 W = The width of the taper.
 L = Minimum length of taper, or SxW for freeways, expressways, and all other roads with speeds of 45 mph or greater, or WxS/60 for urban, residential, and other streets with speeds of 40 mph or less.
 - Space delineator drums used for tapering traffic at dimension "S" and for tangents at two times "S".
 - Sequencing Arrow Panels
 Place panels at the beginning of the taper when possible. Where shoulder width does not provide sufficient room, move the panel closer to the work area and place on the roadway surface. Use Type C Sequencing Arrow Panel.
 - Re-establish the speed limit. Determine the exact speed limit in the field, dependent on location and conditions.
 - Cover existing speed limit signs within a reduced speed zone.
 - Sign G20-55-96 is not required if this layout is part of other traffic control that contains this sign.



SHORT TERM PAVEMENT MARKING-TYPE R

White Edge Lines	1306 LF
White Channel Lines	150 LF
Rt Arrow (2)	30 SF
Thru & Lt Arrow	26 SF

FLEXIBLE DELINEATORS
49 EA

DELINEATOR DRUMS
40 EA

ADVANCE WARNING SIGN SPACING

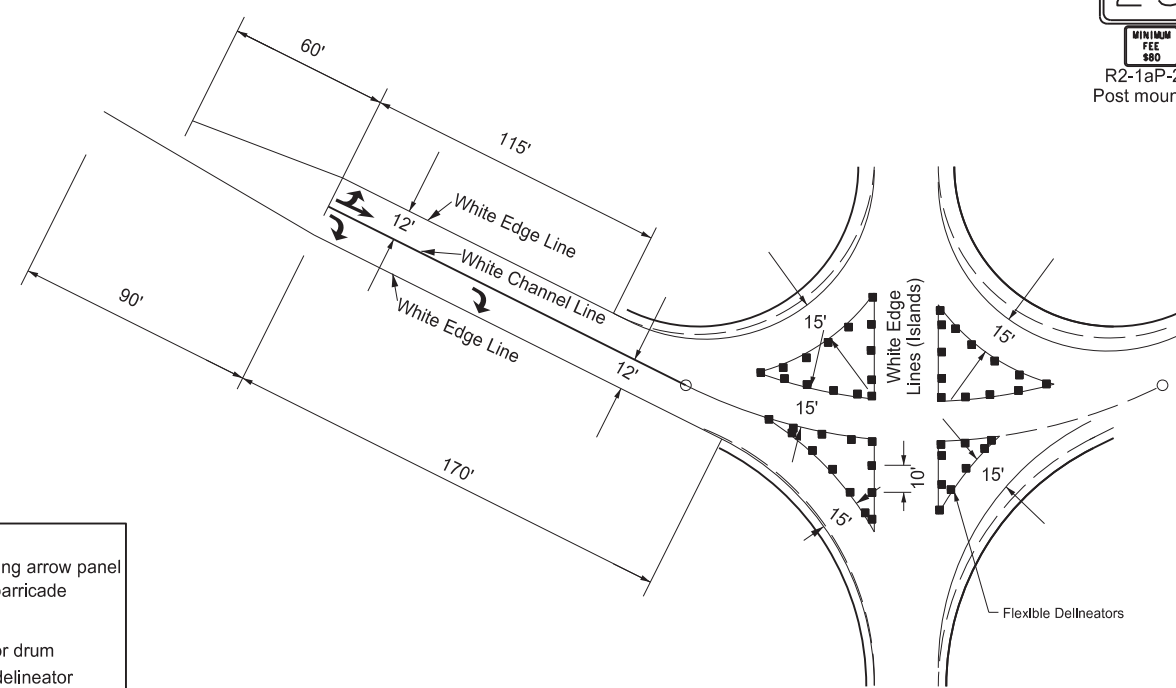
Road Type	Distance Between Signs		
	A	B	C
Urban - Low Speed (30 mph or less)	150	150	150
Urban - Low Speed (over 30 mph to 40 mph)	280	280	280
Urban - High Speed (over 40 mph to 50 mph)	360	360	360
Rural - High Speed (over 50 mph to 65 mph)	720	720	720
Urban Expressway and Freeway (55 mph to 60 mph)	850	1350	2200
Rural Expressway and Freeway (70 mph to 75 mph)	1000	1500	2640
Interstate/4-Lane Divided (Maintenance and Surveying)	750	1000	1500

STOP AHEAD SIGN PLACEMENT DISTANCE

POSTED OR PERCENTILE SPEED	STOP CONDITION
85 th	
30 mph	200 ft
40 mph	305 ft
50 mph	425 ft
55 mph	495 ft
65 mph	645 ft

KEY

- Sequencing arrow panel
- ≡≡≡ Type III barricade
- ⊢ Sign
- Delineator drum
- Flexible delineator



NORTH DAKOTA DEPARTMENT OF TRANSPORTATION
09-05-12

REVISIONS

DATE	CHANGE
06-24-14	Updated sign sizes & Deleted flexible delineators detail
03-15-16	Removed Do Not Pass signs & updated notes
11-01-19	Note 2, sign #s, & shldr taper
12-08-21	Switched order of Detour Ahead and Spd Limit Enforced & added Dollars At Work
11-29-22	Removed Dollars At Work
10-01-24	2023 MUTCD Updates



10/01/24