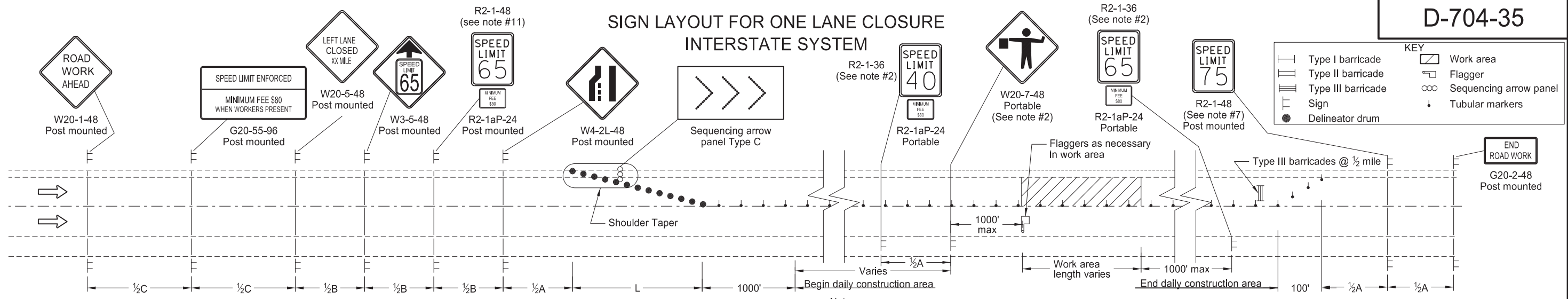


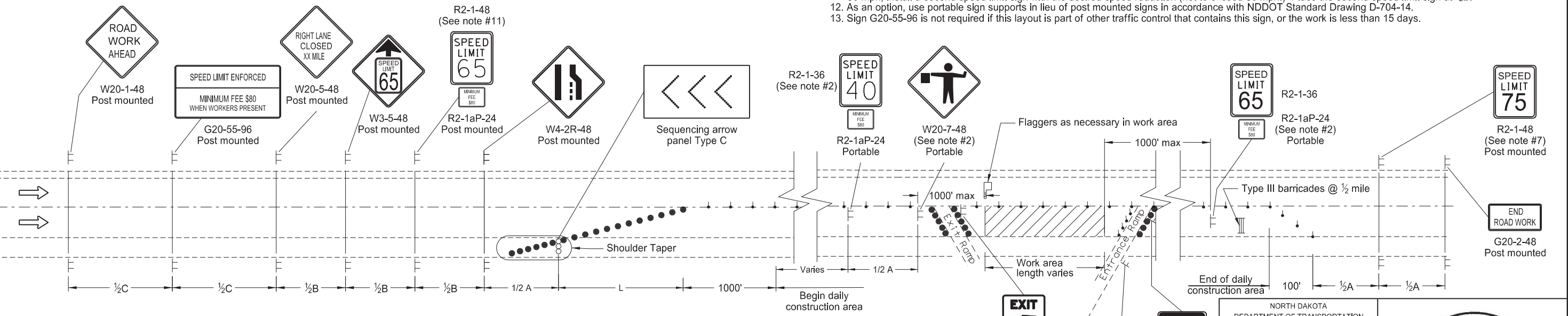
SIGN LAYOUT FOR ONE LANE CLOSURE  
INTERSTATE SYSTEM



LEFT LANE CLOSED  
WORKERS IN WORK AREA

- Notes:
1. Install advance signs for flagging when flaggers are flagging.
  2. Move the advanced flagger sign and the speed limit signs as the work area moves through the construction zone. When the work area is not visible from the flagger, move the flagger station so the work area is visible. Space the 40 mph speed limit sign at 1/2A in advance of the flagger sign and move the 65 mph speed limit sign. Cover or remove the 40 mph speed limit and Minimum Fee \$80 signs and the 65 mph speed limit sign upon completion of the work day or when workers are not present.
  3. RAMP: When the work area encompasses an entrance ramp, install a 40 mph speed limit sign on the ramp and cover any existing yield sign. Install new yield sign as necessary. Remove the ramp speed limit sign when the main line 40 mph speed zone is moved past the ramp.
  4. Variables:  
 S=Numerical value of speed limit or 85th percentile  
 W=The width of taper.  
 L=Minimum length of taper, or SxW for freeways, expressways, and all other roads with speeds of 45 mph or greater, or WxSxS/60 for urban, residential, and other streets with speeds of 40 mph or less.
  5. Space delineator drums for tapering traffic at the dimension "S". Space tubular markers used for tangents at 2 times dimension "S".
  6. Place sequencing arrow panels at the beginning of the taper when possible. Where shoulder width does not provide sufficient room, move the panel closer to the work area and place on the roadway surface.  
 Use Type C on roadways with high traffic speeds and volumes (over 40 mph or 5000 ADT or greater).
  7. Re-establish the speed limit. Determine the exact speed limit in the field, dependent on location and conditions.
  8. Cover existing speed limit signs within a reduced speed zone.
  9. Upon approval, the Engineer will measure obliterated or covered pavement marking as Obliteration of Pavement Marking.
  10. Install flags on warning signs in urban areas when signs are not portable. Mount 24 inch square flags perpendicular to the edges of the diamond sign, and at such a distance above the edge that the flag does not touch the sign when limp.
  11. Determine the reduced speed limit dependent on the in place speed limit before construction. When speed limits are to be reduced more than 30 mph, install a second speed limit sign with the desired speed reduction (not to exceed 30 mph.) Place the second speed limit sign at 1/2B.
  12. As an option, use portable sign supports in lieu of post mounted signs in accordance with NDDOT Standard Drawing D-704-14.
  13. Sign G20-55-96 is not required if this layout is part of other traffic control that contains this sign, or the work is less than 15 days.

ADVANCE WARNING SIGN SPACING			
Road Type	Distance Between Signs Min (ft)		
	A	B	C
Rural - High Speed (over 50 mph to 65 mph)	720	720	720
Urban Expressway and Freeway (55 mph to 60 mph)	850	1350	2200
Rural Expressway and Freeway (70 mph to 75 mph)	1000	1500	2640
Interstate/4-Lane Divided (Maintenance and Surveying)	750	1000	1500



RIGHT LANE CLOSED  
WORKERS IN WORK AREA

EXIT  
E5-1-48  
Portable

SPEED LIMIT ENFORCED  
MINIMUM FEE \$80  
WHEN WORKERS PRESENT  
G20-55-96  
Post mounted  
Install this sign only when ramp volume is 1000 ADT or more

SPEED LIMIT 40  
R2-1aP-24  
Portable  
(see notes #2 & #3)

YIELD  
R1-2-60  
Portable

NORTH DAKOTA DEPARTMENT OF TRANSPORTATION	
9-7-2012	
REVISIONS	
DATE	CHANGE
06-23-14	Revised Note 12
03-15-16	Removed Do Not Pass signs & updated notes
08-17-17	Moved speed signs & added note
10-17-17	Corrected spelling of "shoulder"
11-01-19	Revised tubular markers symbols
12-08-21	Switched order of Road Work Ahead and Spd Limit Enforced, added Dollars At Work, & removed table
11-29-22	Removed Dollars At Work

