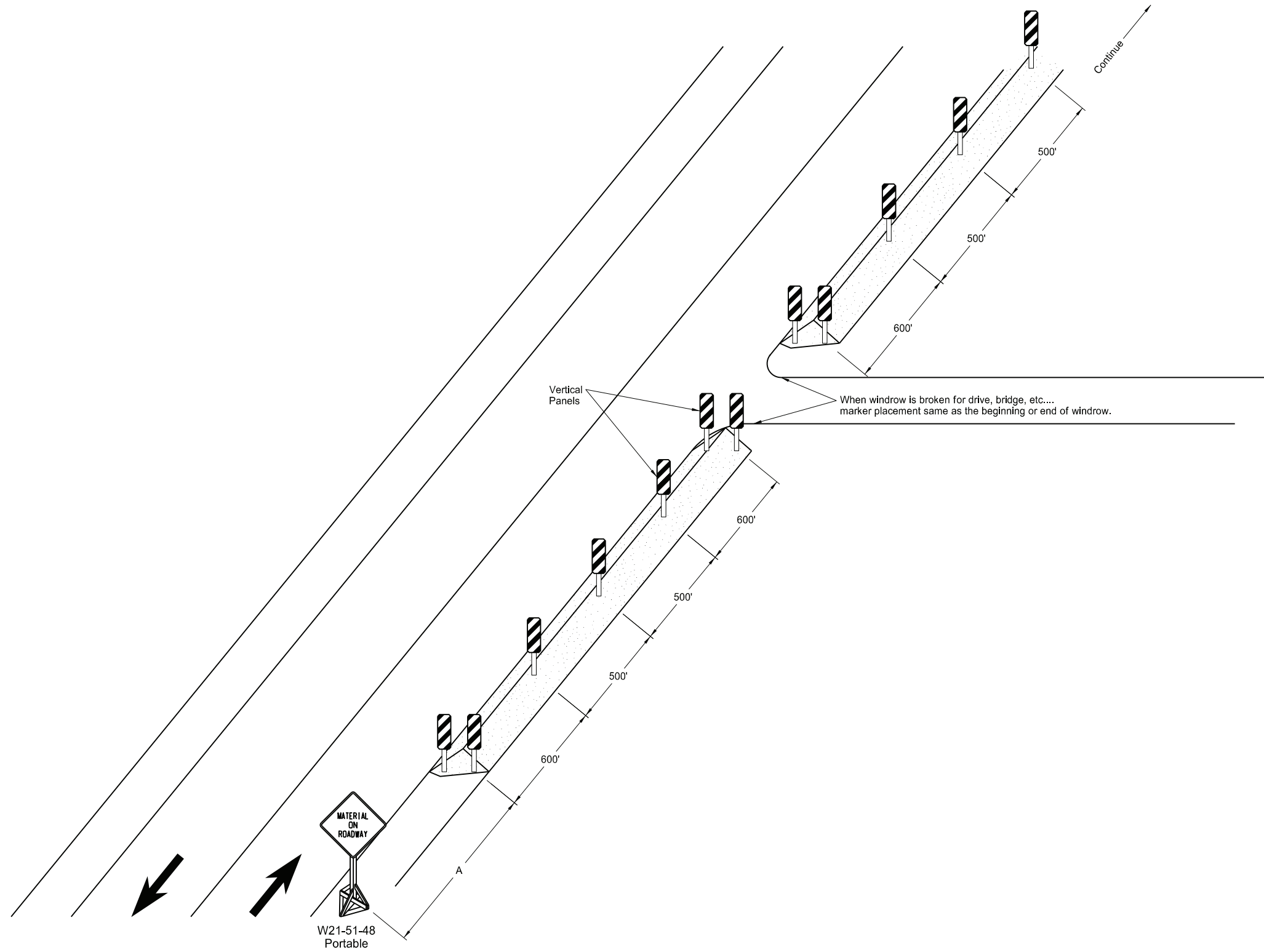


WINDROW MARKING

D-704-30



| ADVANCE WARNING SIGN SPACING | | | |
|---|----------------------------------|------|------|
| Road Type | Distance Between Signs Min. (ft) | | |
| | A | B | C |
| Urban - Low Speed (30 mph or less) | 150 | 150 | 150 |
| Urban - Low Speed (over 30 to 40 mph) | 280 | 280 | 280 |
| Urban - High Speed (over 40 mph to 50 mph) | 360 | 360 | 360 |
| Rural - High Speed (over 50 mph to 65 mph) | 720 | 720 | 720 |
| Urban Expressway and Freeway (55 mph to 60 mph) | 850 | 1350 | 2200 |
| Rural Expressway and Freeway (55 mph to 60 mph) | 1000 | 1500 | 2640 |
| Interstate/4-Lane Divided (Maintenance and Surveying) | 750 | 1000 | 1500 |

| NORTH DAKOTA DEPARTMENT OF TRANSPORTATION | |
|--|------------------------------|
| 9-27-13 | |
| REVISIONS | |
| DATE | CHANGE |
| 6-24-14 | Revised Note |
| 8-17-17 | Updated notes & sign support |
| 11-01-19 | Revised note |
| 8-02-24 | Electronic Stamp/Signature |



08/02/24

Notes:
As an option, use portable sign supports in lieu of post mounted sign in accordance with NDDOT Standard Drawing D-704-14.