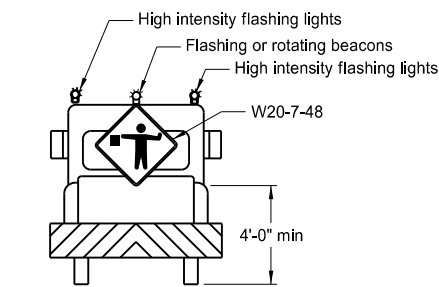
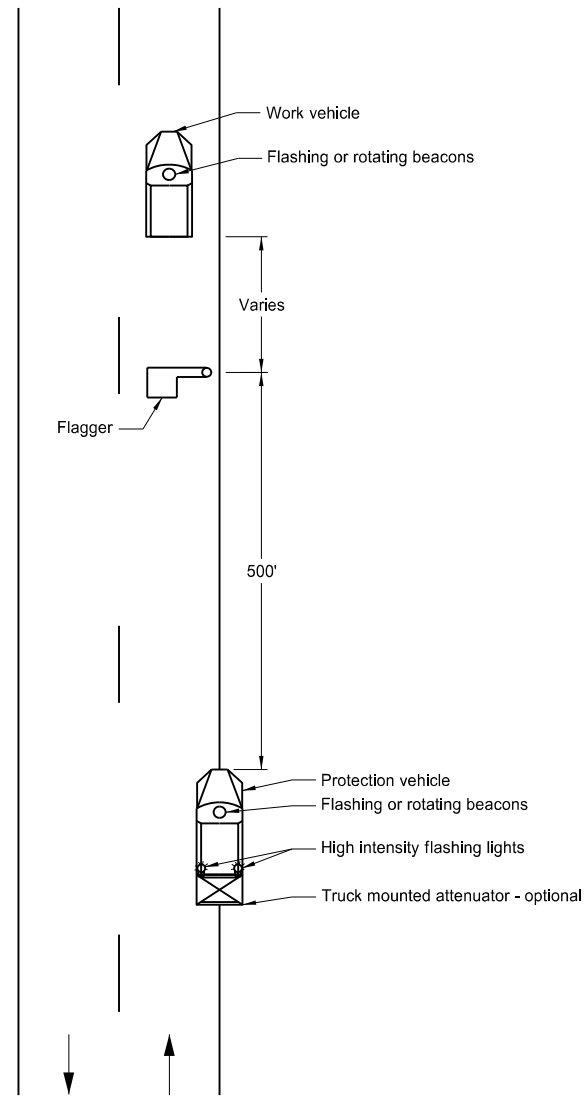
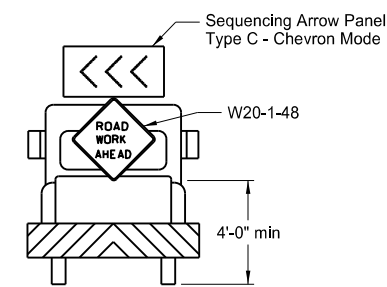
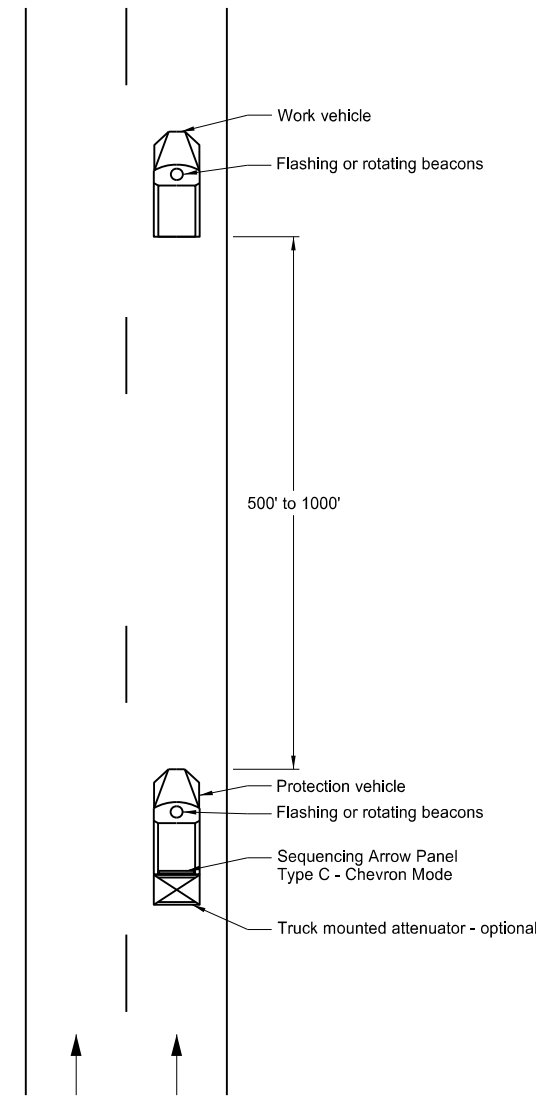


Two Lane, Two Way Roadways



Typical Protection Vehicle

Multilane Roadways



Typical Protection Vehicle

Notes:

1. Display a 360 degree rotating, flashing, oscillating or strobe light on the working vehicle.
2. Display a 360 degree rotating, flashing, oscillating or strobe light on the shadow vehicle. Operate a sequencing arrow panel Type C in chevron mode on the shadow vehicle for Multilane Roadway.
3. Use these layouts during daylight hours and in areas of good visibility only.
4. Use flagger to protect the work area and warn oncoming traffic for two lane, two way roadway.

NORTH DAKOTA DEPARTMENT OF TRANSPORTATION	
9-25-12	
REVISIONS	
DATE	CHANGE
9-27-17 10-03-19	Updated to active voice New Design Engr PE Stamp

This document was originally issued and sealed by
 Kirk J Hoff,
 Registration Number
 PE- 4683,
 on 10/03/19 and the original document is stored at the
 North Dakota Department
 of Transportation