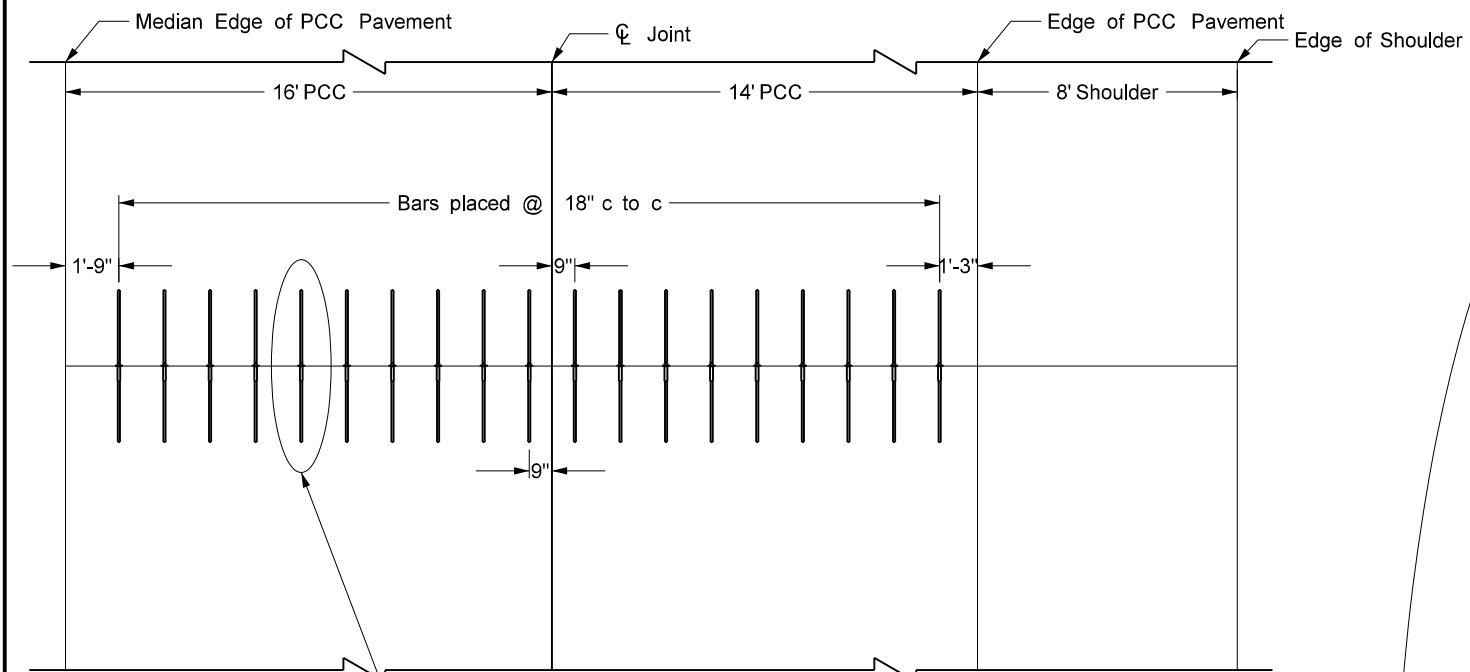
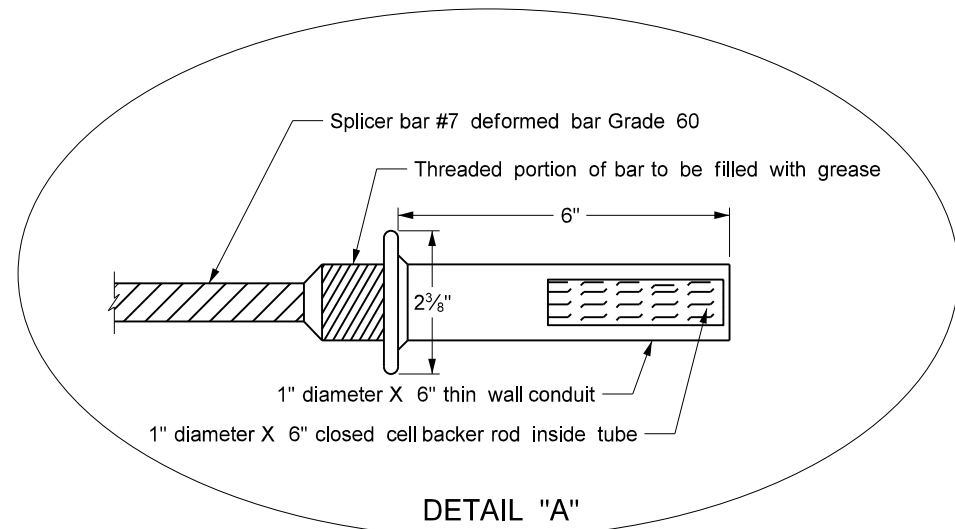


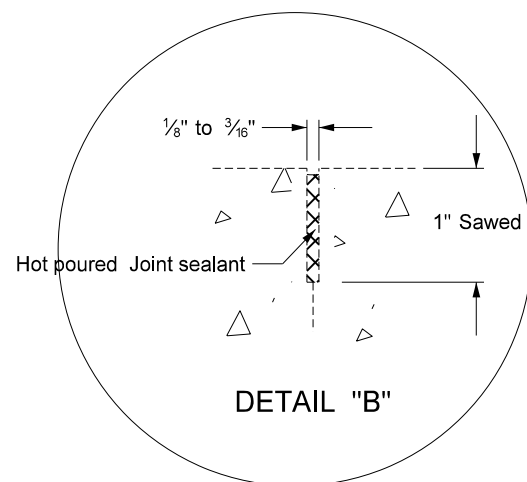
TRANSVERSE CONSTRUCTION JOINT



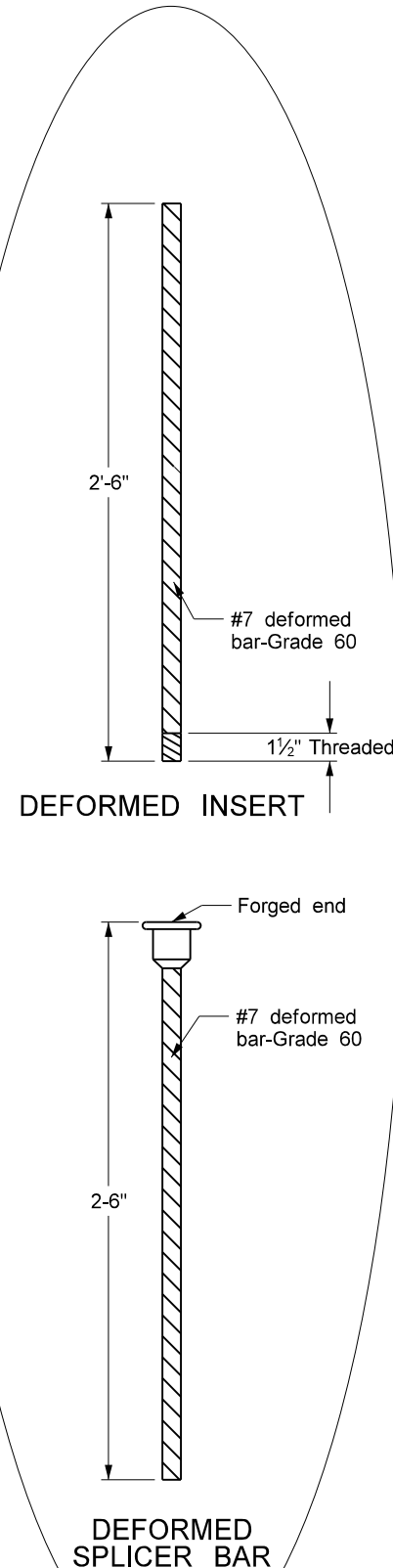
PLAN VIEW



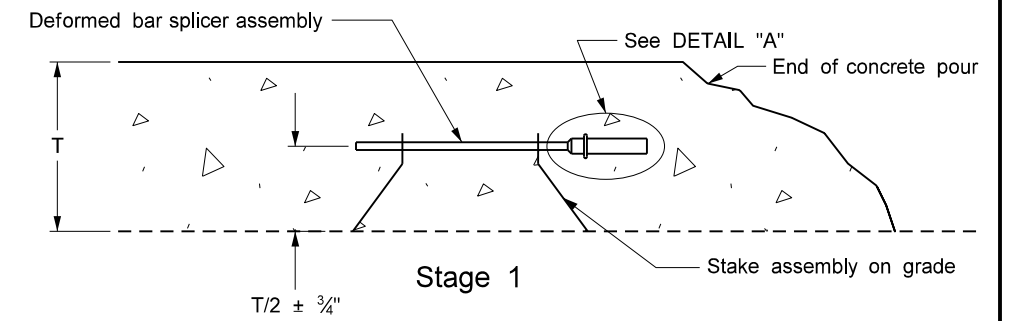
DETAIL "A"



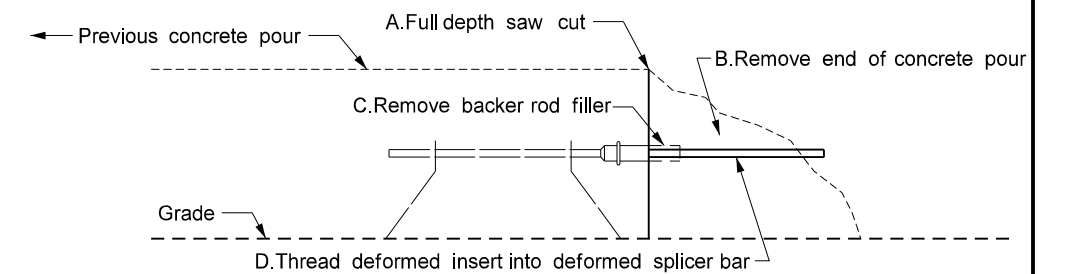
DETAIL "B"



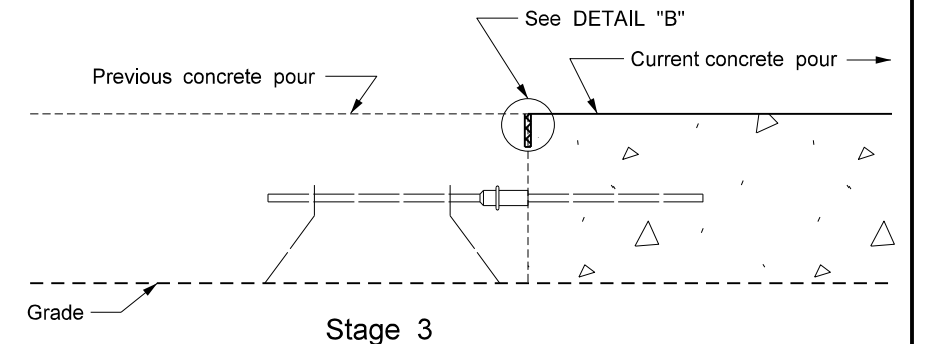
STAGES OF CONSTRUCTION



Stage 1



Stage 2



Stage 3

Notes

1. Saw and seal all construction joints.
2. Include all costs for transverse construction joints in the price bid for PCC pavement.
3. Do not saturate the subgrade during the sawing operation.

NORTH DAKOTA DEPARTMENT OF TRANSPORTATION	
9-15-2010	
REVISIONS	
DATE	CHANGE
3-16-16 8-27-19	Revised Joint Details & notes. New Design Engr PE Stamp.

This document was originally issued and sealed by Kirk J Hoff, Registration Number PE-4683, on 8/27/19 and the original document is stored at the North Dakota Department of Transportation