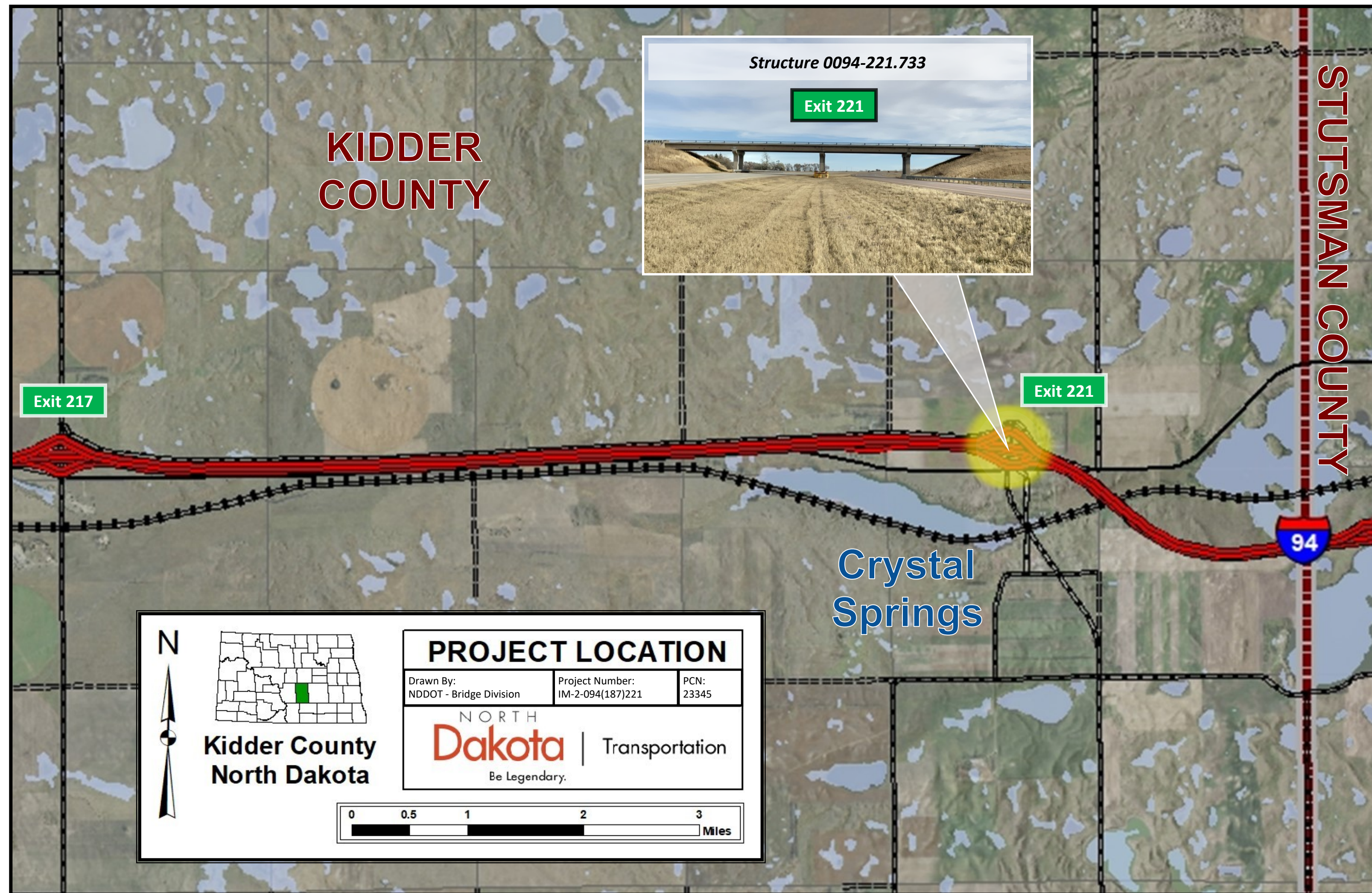
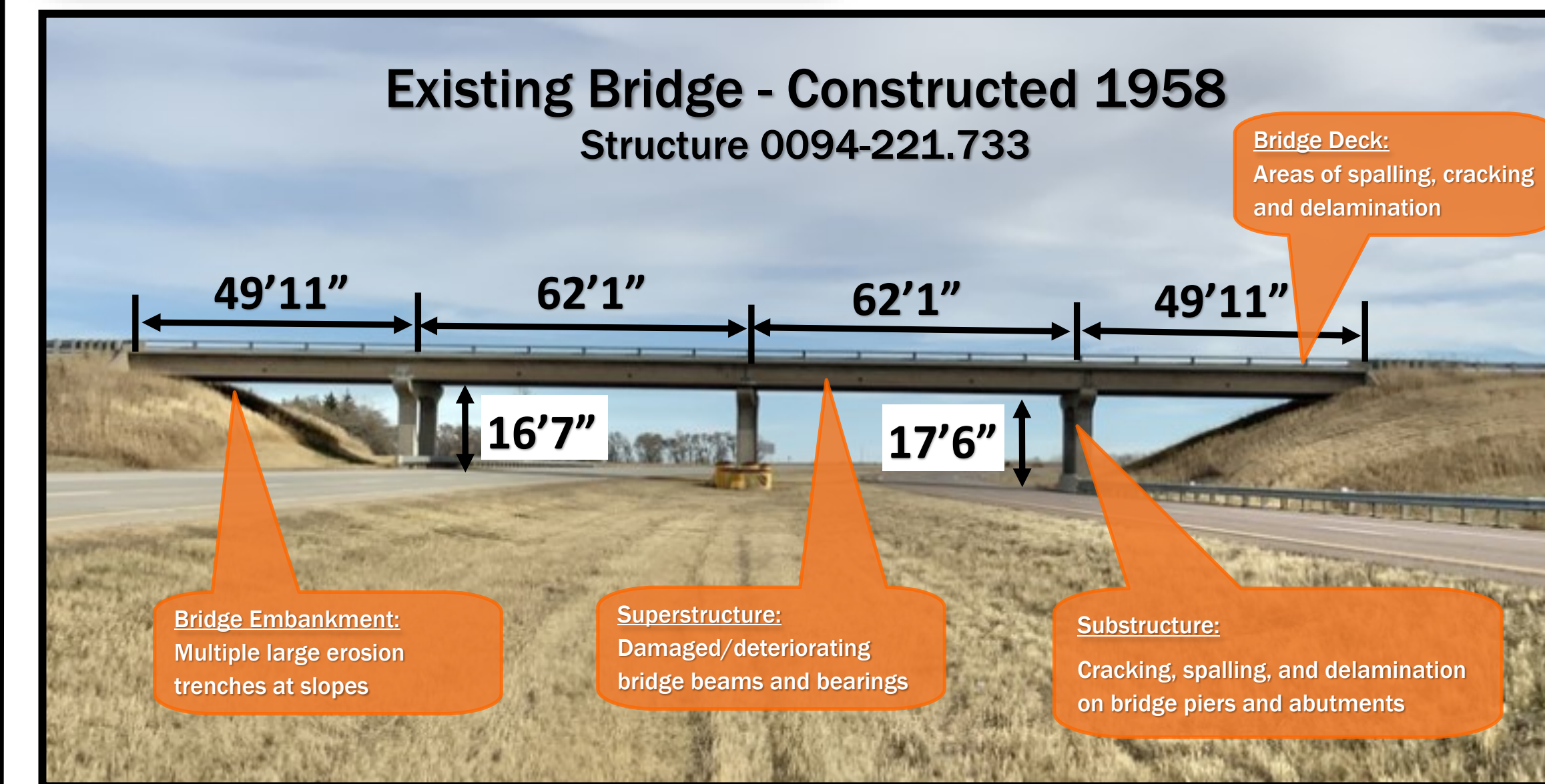


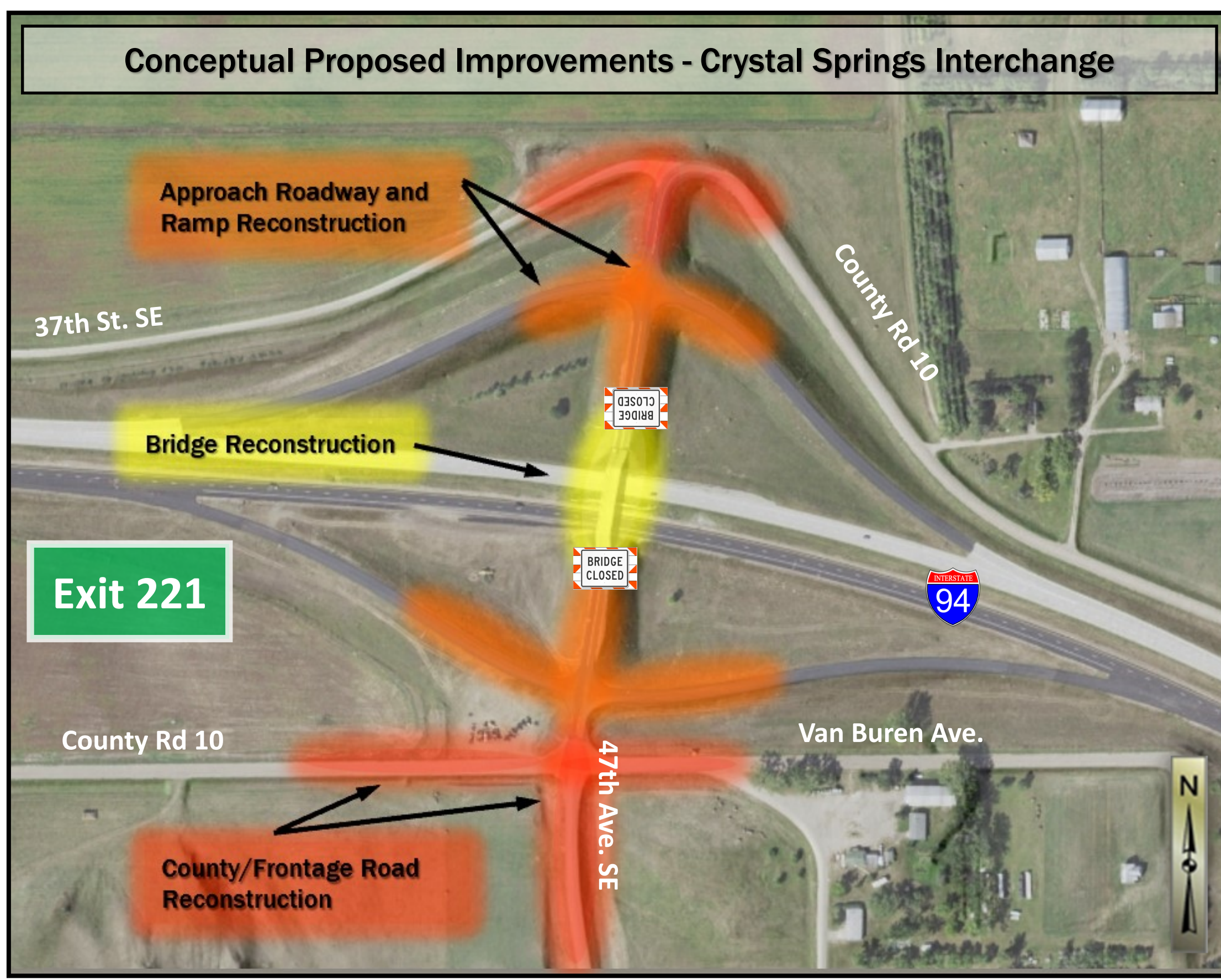
# NORTH DAKOTA DEPARTMENT OF TRANSPORTATION PUBLIC INPUT MEETING - TAPPEN, ND



- **Proposed Bridge**
  - Spans = 2 (min)
  - Length = ± 264 ft.
  - Width = ~ min. 32 ft.
  - Railing Height = 3'2"
  - Vert. Clearance ~ 17' or greater
  - New slope protection
  - Improved design, features, and reduced maintenance



- **Existing Bridge**
  - Spans = 4
  - Length = 224 ft.
  - Width = 24 ft.
  - Railing Height = 2'9"
  - Vert. Clear = 16'7"
  - No slope protection
  - Deteriorating bridge components require attention



- Project Phasing**
- 1) Close bridge and detour traffic as necessary
  - 2) Remove existing bridge and construct new bridge
  - 3) Reconstruct bridge approach roadways, interchange ramps, and county/frontage roads (roads will remain open to traffic)
  - 4) Reopen bridge and complete project

**EXHIBIT 1**  
PROJECT OVERVIEW  
I-94 CRYSTAL SPRINGS INTERCHANGE BRIDGE RECONSTRUCTION

