






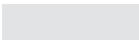
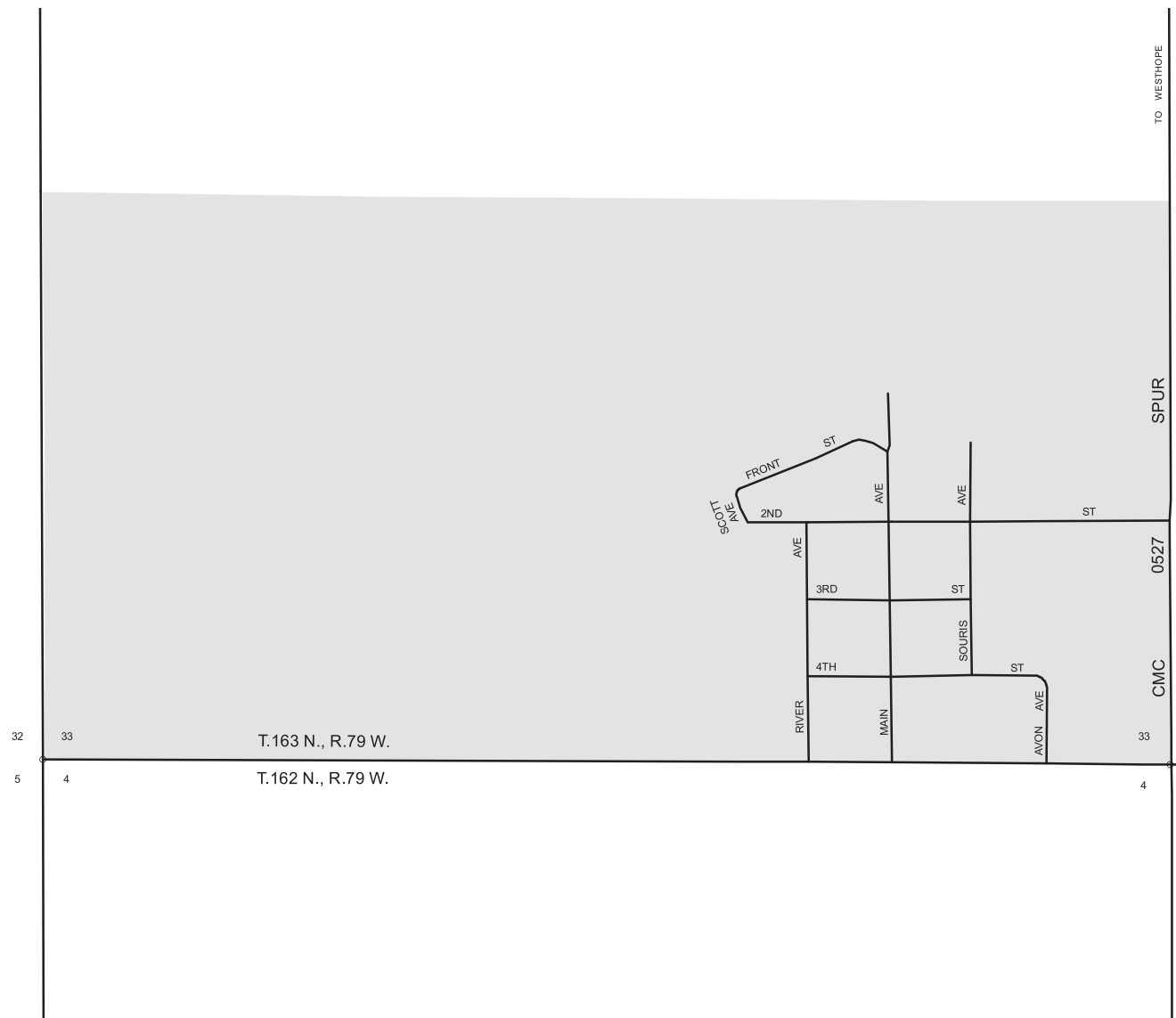


GENERAL LEGEND

- OPEN STREETS & SECTION LINE ROADS 
- RAILROADS 
- RAILWAY CROSSING 
- RAILWAY STATION 
- COUNTY MAJOR COLLECTOR **CMC**
- INTERSTATE NUMBERED HIGHWAY 
- U.S. NUMBERED HIGHWAY 
- STATE HIGHWAY 
- CORPORATE BOUNDARY 

- CROSSING TYPE
- AUTOMATIC FLASHING **Y012**
 - CROSS BUCKS **Y016**
 - AUTOMATIC FLASHING WITH GATES **Y018**



2010 Population 38

LANDA BOTTINEAU COUNTY NORTH DAKOTA

PREPARED BY
NORTH DAKOTA DEPARTMENT OF TRANSPORTATION
PLANNING / ASSET MANAGEMENT DIVISION
IN COOPERATION WITH THE
U.S. DEPARTMENT OF TRANSPORTATION
FEDERAL HIGHWAY ADMINISTRATION



2016

Notice of Disclaimer
The North Dakota Department of Transportation (NDDOT) makes this map available on an "as is" basis as a public service. Under no circumstances does NDDOT warrant or certify the information to be free of errors or deficiencies of any kind. NDDOT specifically disclaims all warranties, express or implied, including but not limited to the warranties of merchantability and fitness for a particular purpose.