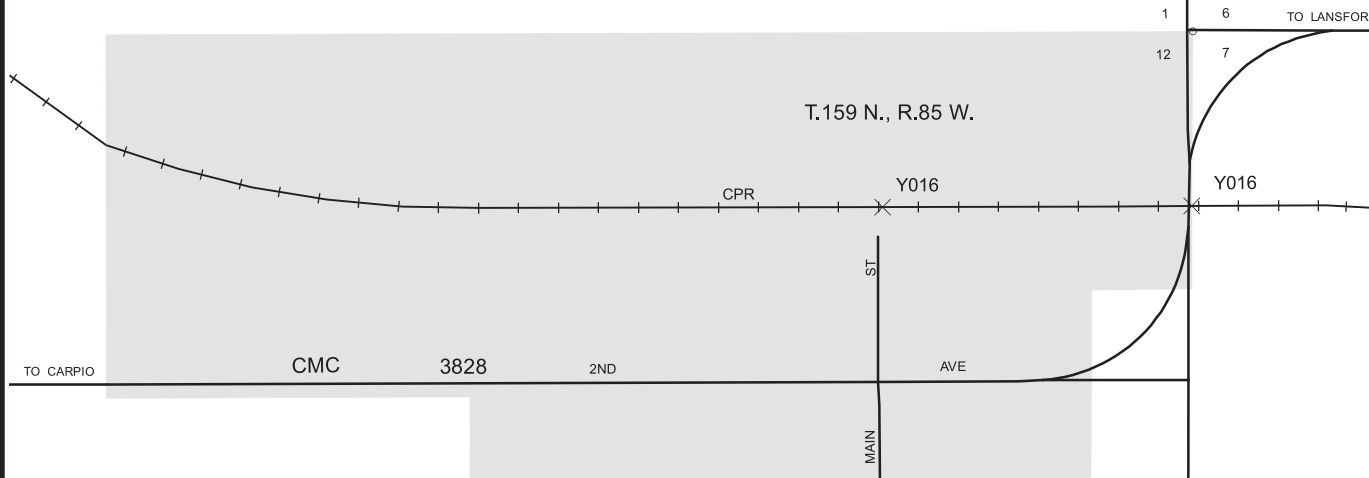


## GENERAL LEGEND

OPEN STREETS & SECTION LINE ROADS	
RAILROADS	
RAILWAY CROSSING	
RAILWAY STATION	
COUNTY MAJOR COLLECTOR	CMC
INTERSTATE NUMBERED HIGHWAY	
U.S. NUMBERED HIGHWAY	
STATE HIGHWAY	
CORPORATE BOUNDARY	
CROSSING TYPE	
AUTOMATIC FLASHING	Y012
CROSS BUCKS	Y016
AUTOMATIC FLASHING WITH GATES	Y018



2010 Population 7

# GRANO

## RENNVILLE COUNTY NORTH DAKOTA

PREPARED BY  
NORTH DAKOTA DEPARTMENT OF TRANSPORTATION  
PLANNING / ASSET MANAGEMENT DIVISION  
IN COOPERATION WITH THE  
U.S. DEPARTMENT OF TRANSPORTATION  
FEDERAL HIGHWAY ADMINISTRATION



2016

### Notice of Disclaimer

The North Dakota Department of Transportation (NDDOT) makes this map available on an "as is" basis as a public service. Under no circumstances does NDDOT warrant or certify the information to be free of errors or deficiencies of any kind. NDDOT specifically disclaims all warranties, express or implied, including but not limited to the warranties of merchantability and fitness for a particular purpose.