

# MEDORA TRANSPORTATION PLANNING STUDY

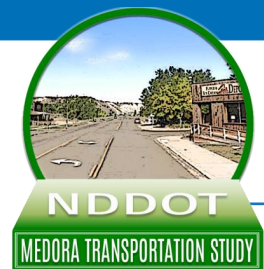
PRELIMINARY PROFESSIONAL CONSULTING ENGINEERING & PLANNING  
SERVICES FOR

SPR-P042(005), PCN 23530

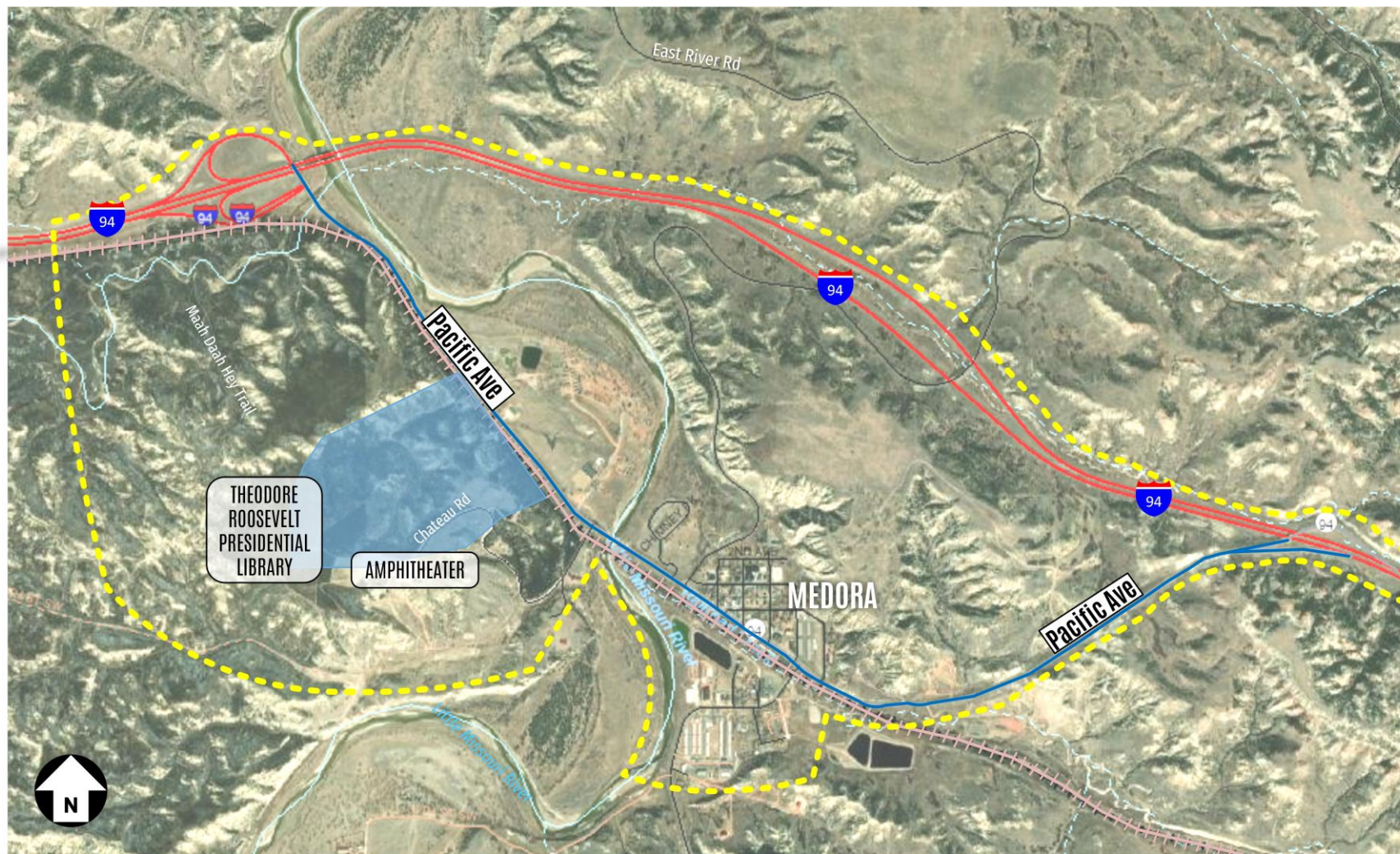
## PUBLIC INPUT MEETING #2 PRESENTATION



# TRANSPORTATION STUDY AREA

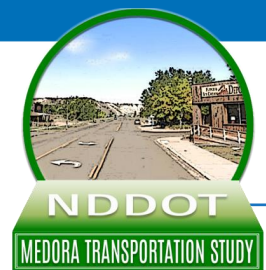


## THEODORE ROOSEVELT PRESIDENTIAL LIBRARY & AMPHITHEATER ACCESS

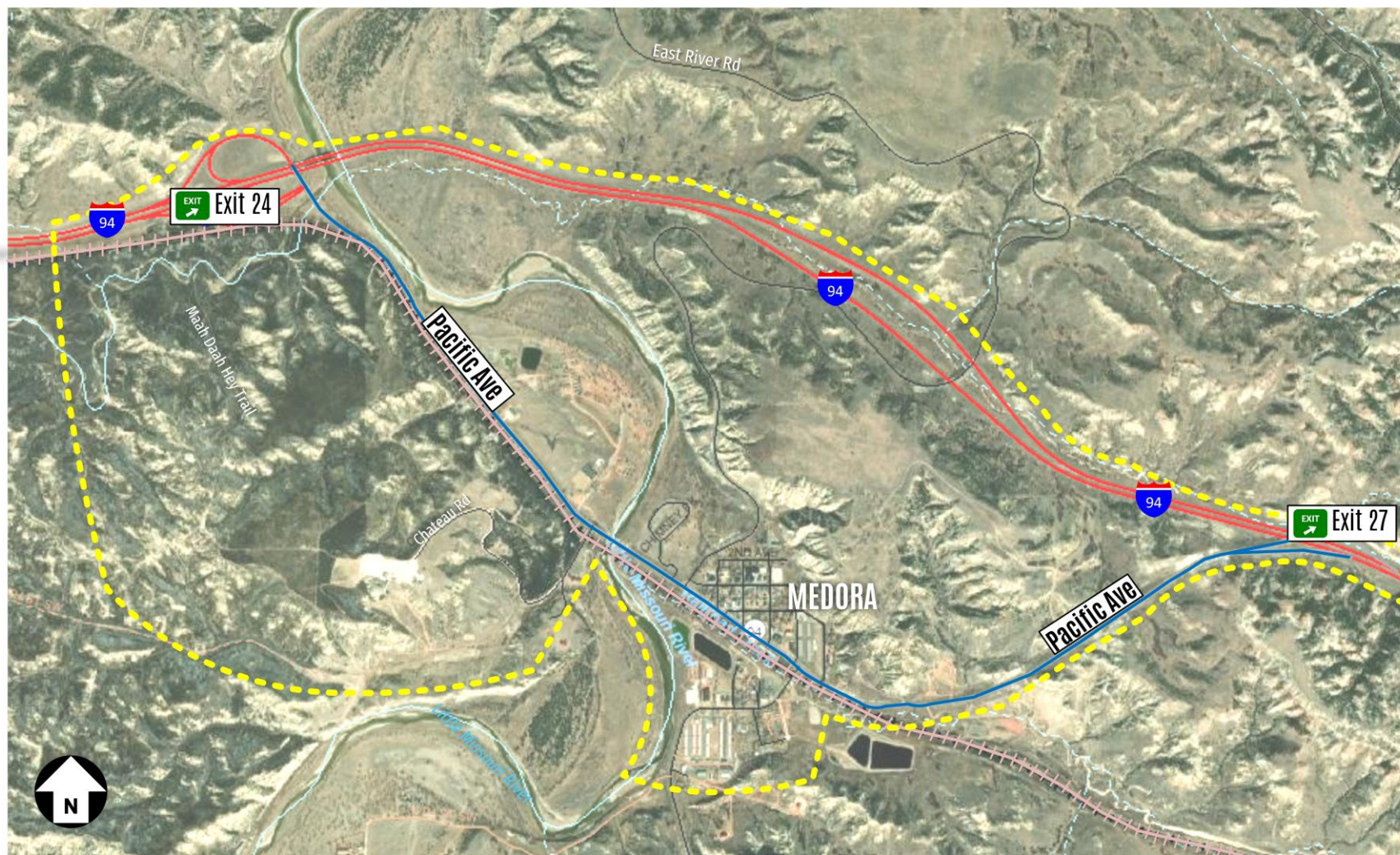




# TRANSPORTATION STUDY AREA

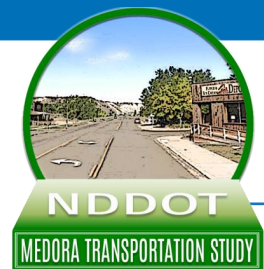


## I-94 EXIT 24 & EXIT 27 INTERCHANGES

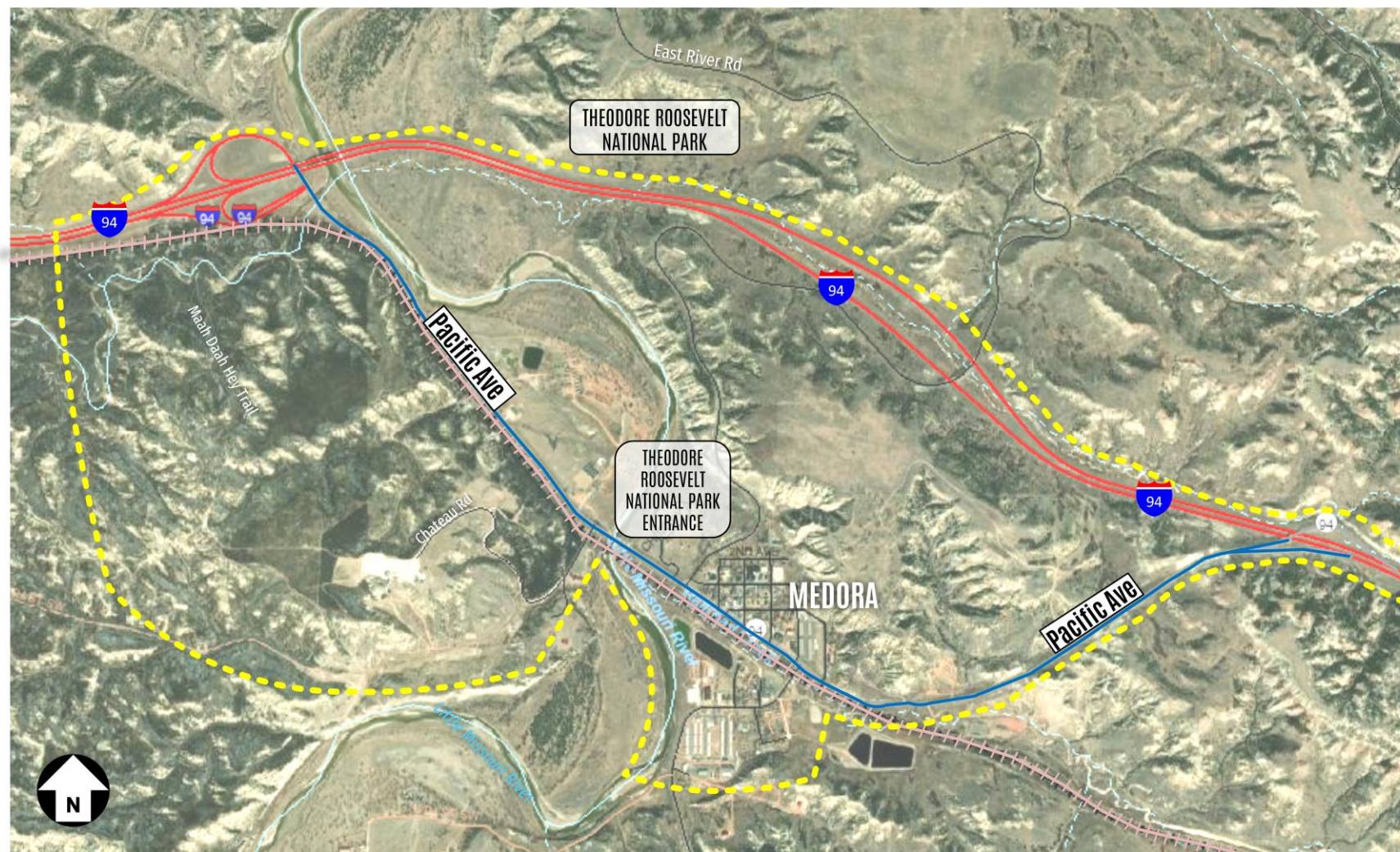




# TRANSPORTATION STUDY AREA

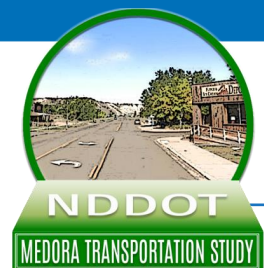


## THEODORE ROOSEVELT NATIONAL PARK ENTRANCE

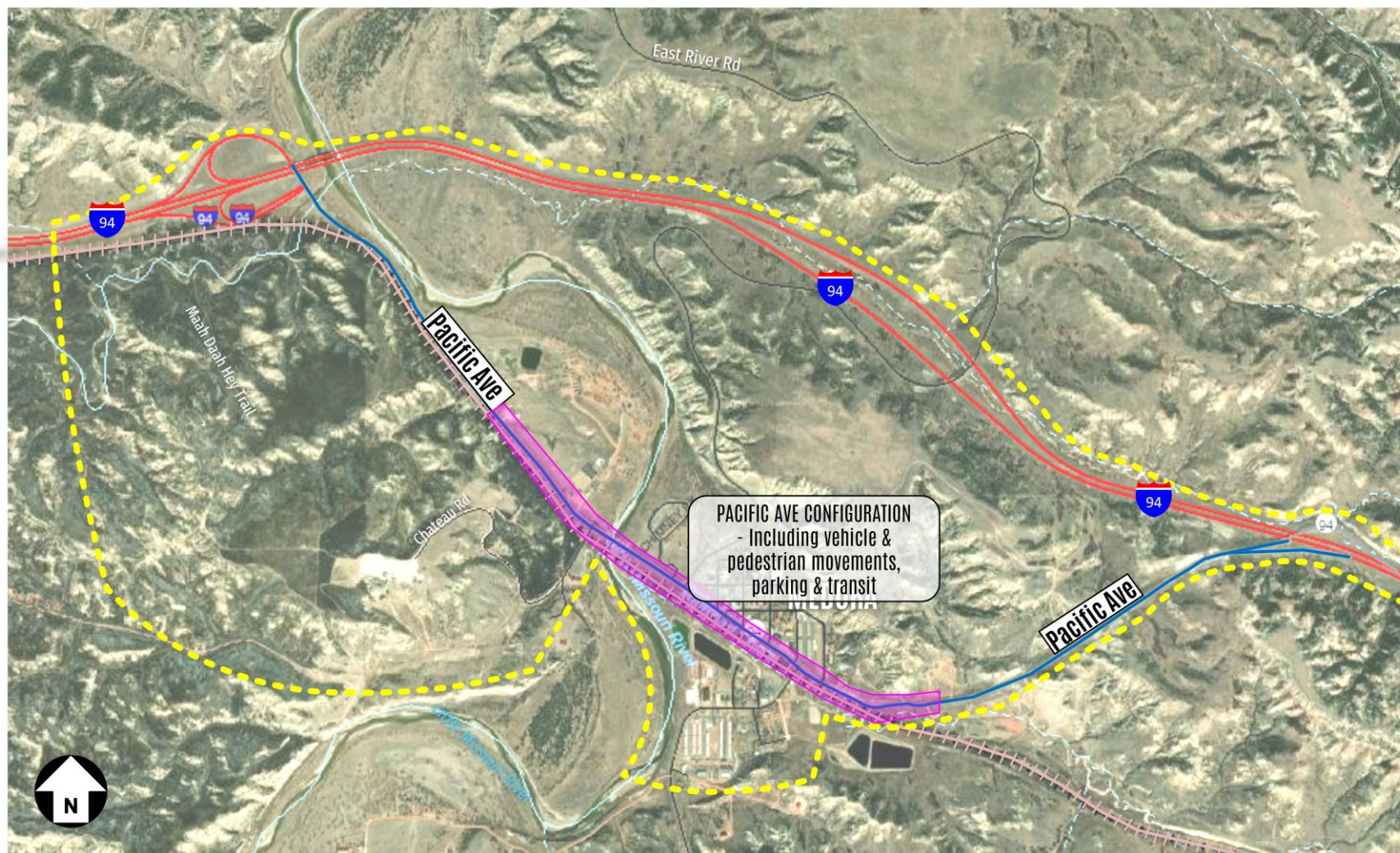




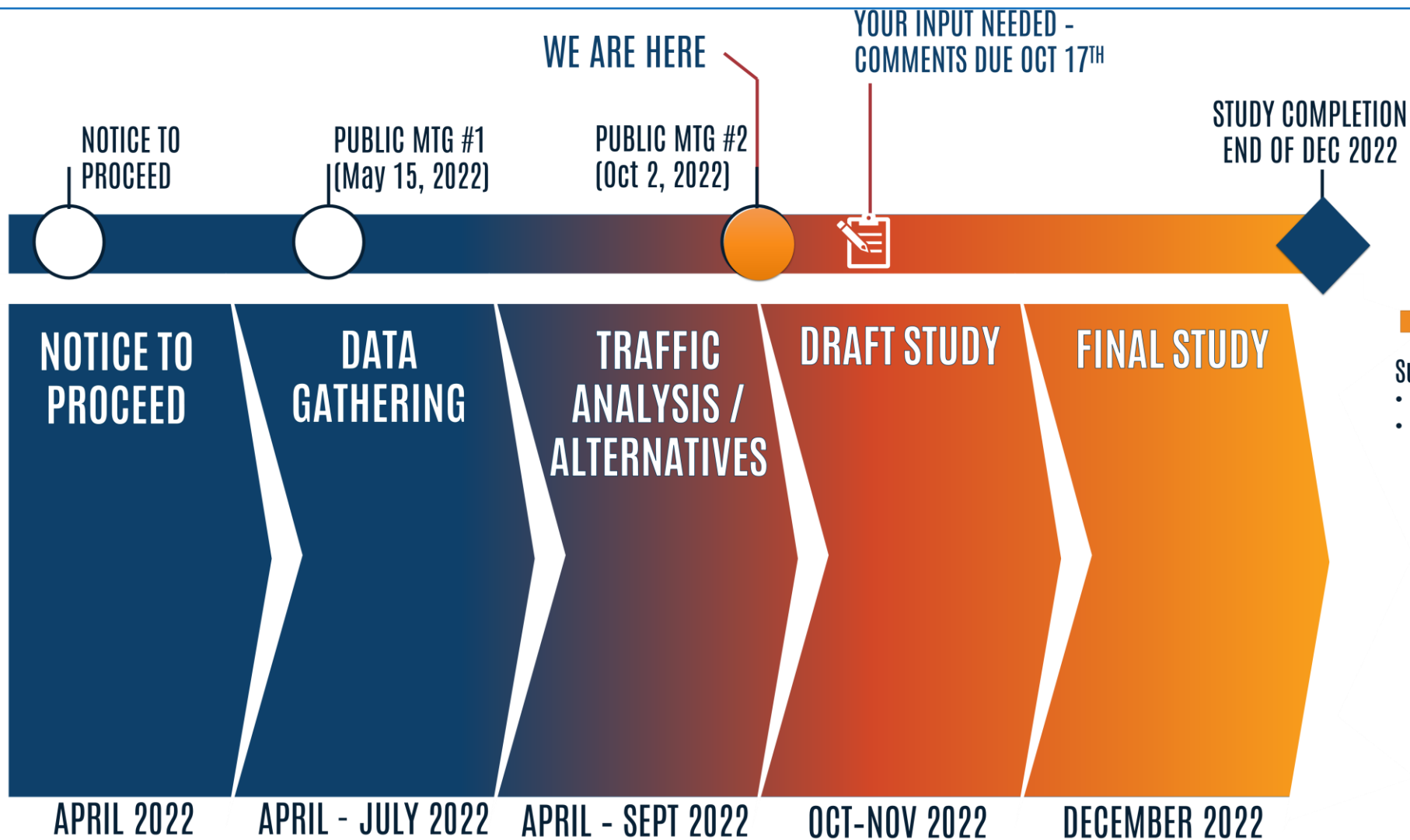
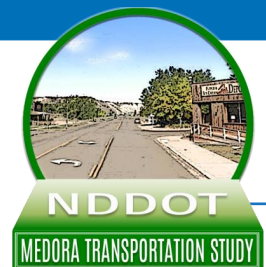
# TRANSPORTATION STUDY AREA



## PACIFIC AVENUE CONFIGURATION



# PROCESS / SCHEDULE



## Subsequent Project

- Environmental Study
- Alternative Development and Design Details



# WHAT WE HAVE HEARD

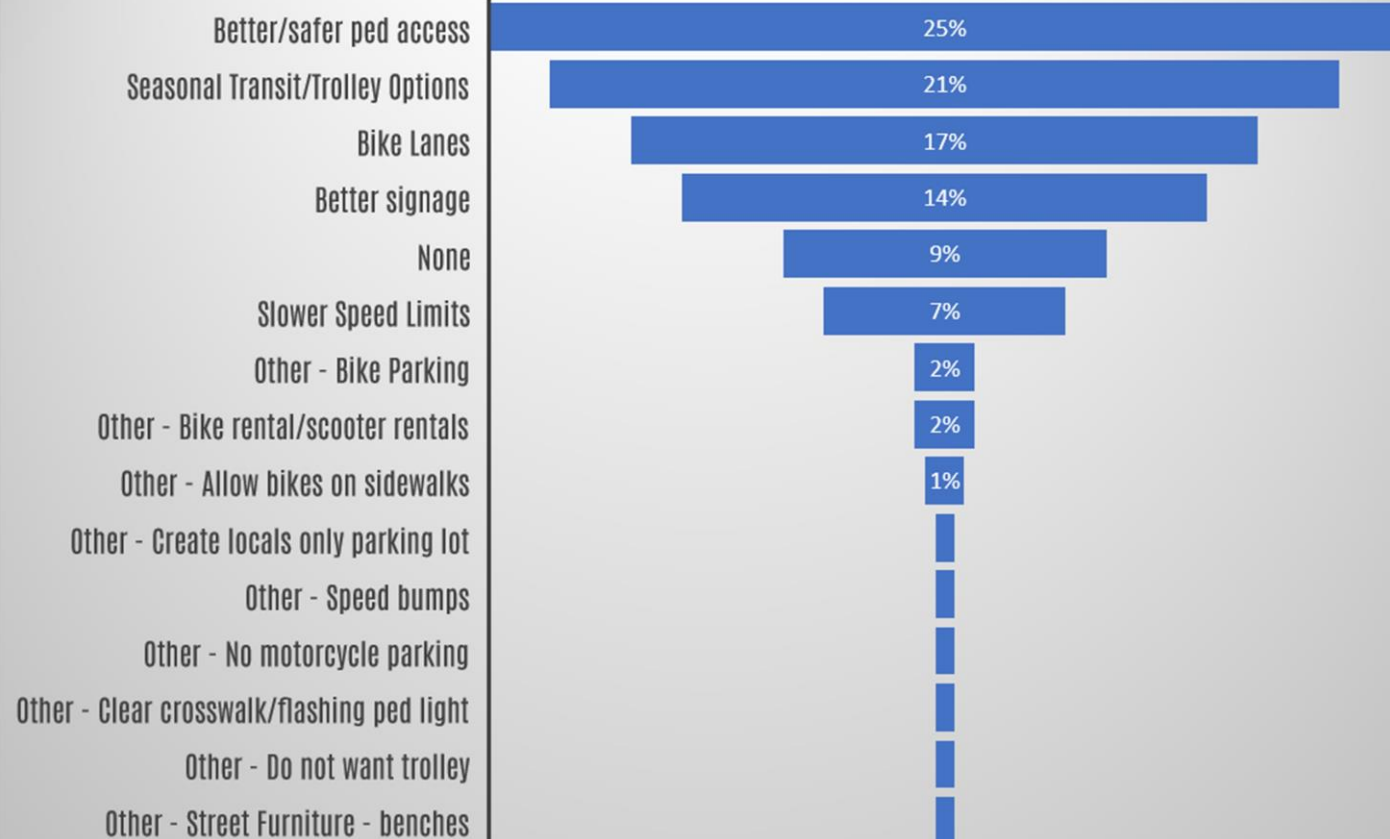


NDDOT

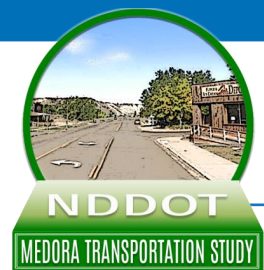
MEDORA TRANSPORTATION STUDY

1. Public Meeting – May 15th, 2022
2. On-Street Interviews – July 9, 2022
3. On Site Data Collection – July 9, 2022
4. One-on-One Interviews – August 8 – 10, 2022
5. On-going on – line survey participation

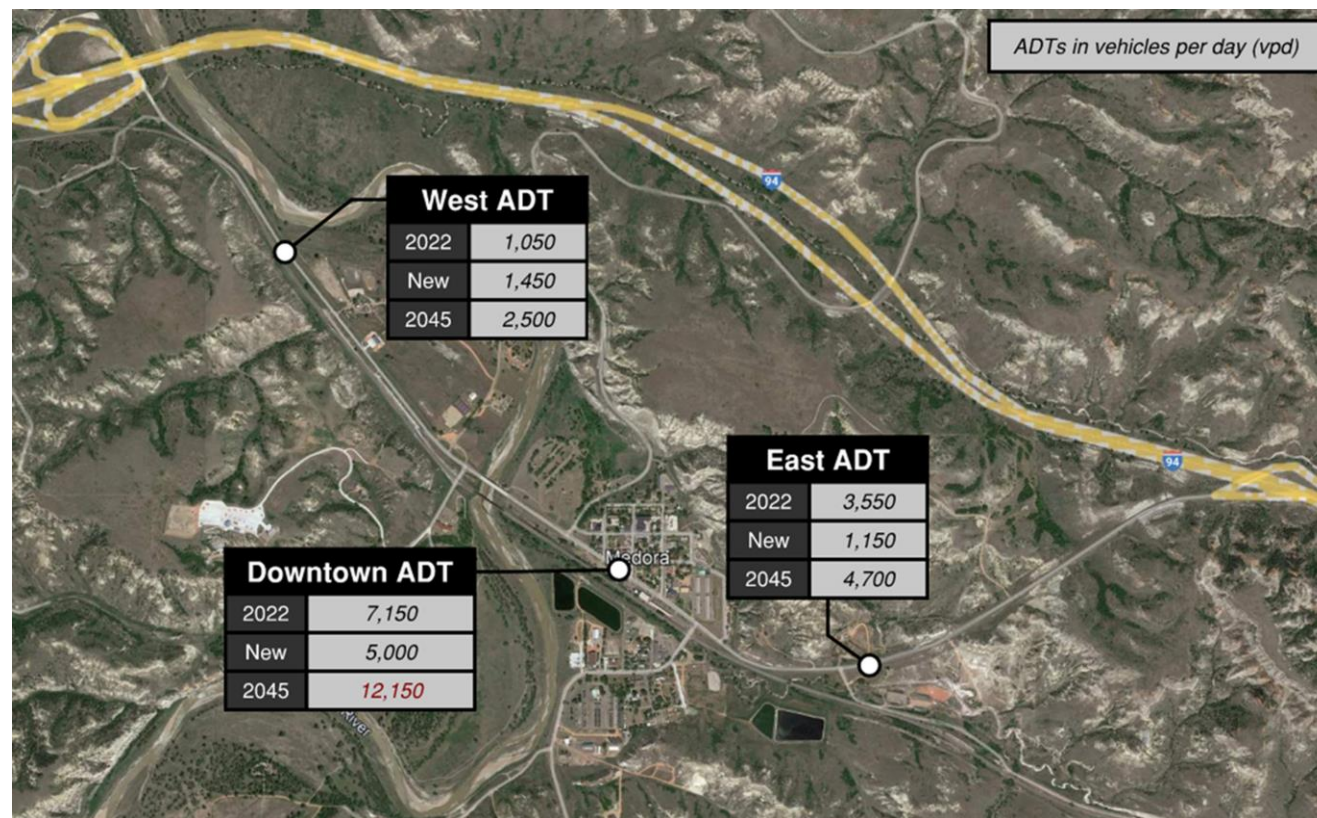
## DESIRED IMPROVEMENTS



# TRAFFIC CONDITIONS AND FORECAST

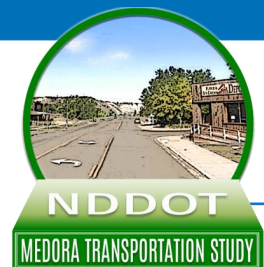


- Future traffic exceeds corridor capacity of 10,000 vpd, assuming stop-controlled side streets
- Intersection Improvements will be needed
- Focus on Pedestrian Accommodation/ Safety



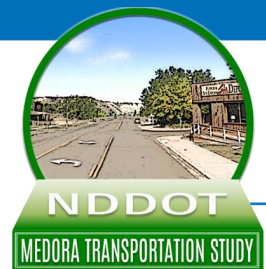


# PACIFIC AVENUE ROUNDABOUTS



- Enhanced level of service over stop-controlled intersections





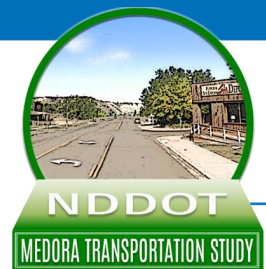
# PACIFIC AVENUE CONCEPT #1a

## Roundabouts with 2 Lanes and Flex Trolley Lane

(existing parking is removed north side during peak season)







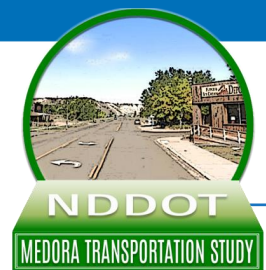
# PACIFIC AVENUE CONCEPT #1b

## Roundabouts with 3 Lanes with Sharrows & Bulb-outs

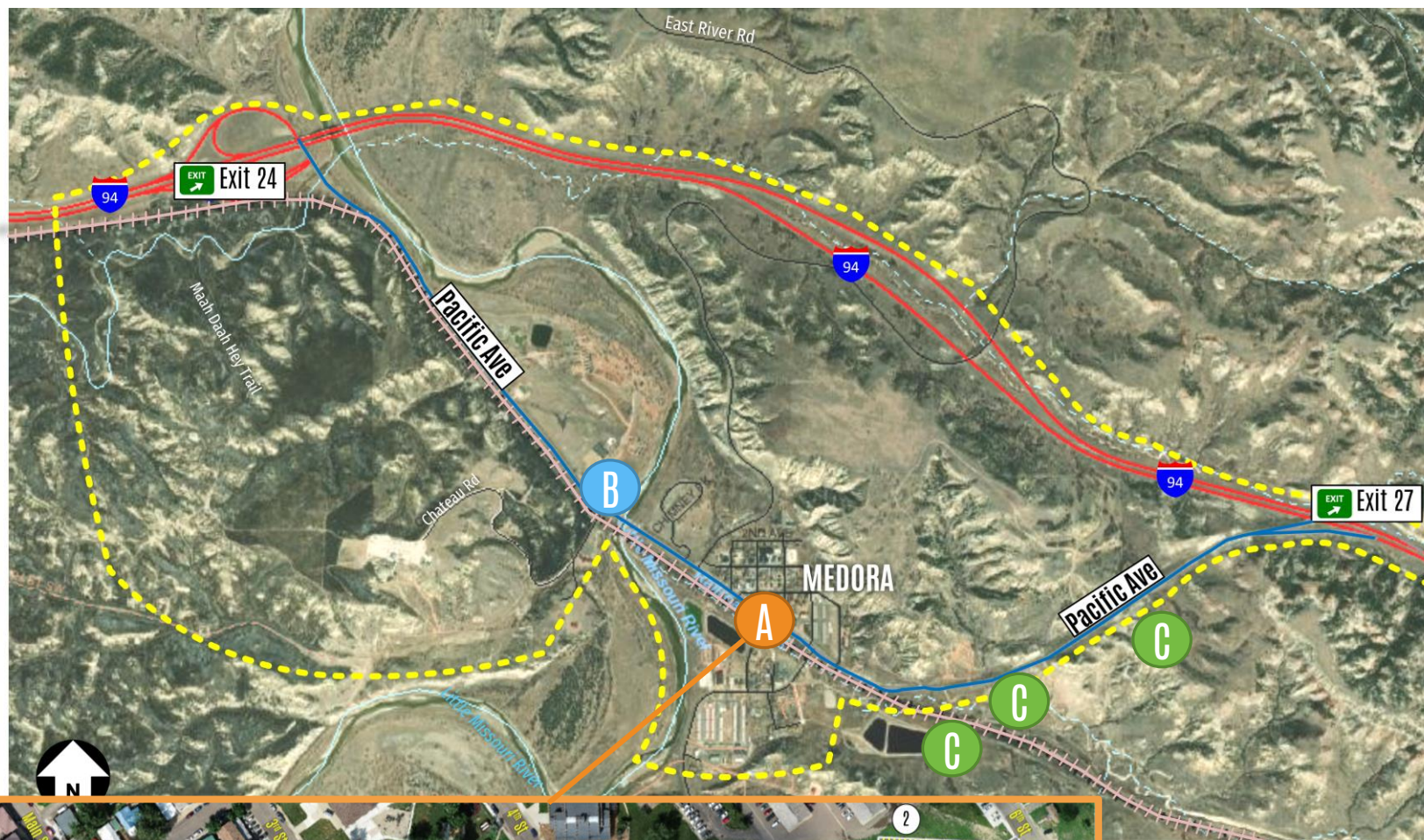




# PARKING/MULTI-MODAL

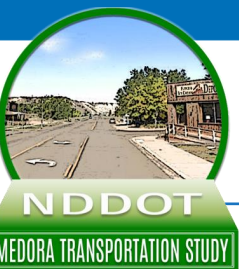


- A** Parking Concept #1 –  
Downtown expanded  
parking (3 potential  
locations)
- B** Parking Concept #2  
Western Offsite Shared  
Parking/Transit
- C** Parking Concept #3  
Eastern Offsite Shared  
Parking/Transit

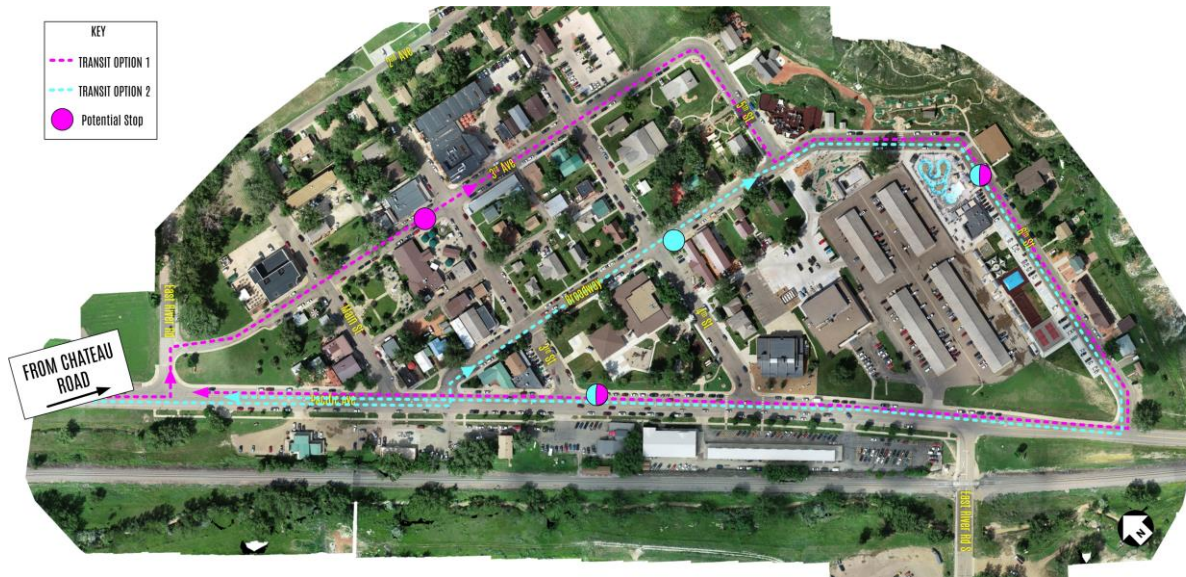




# POTENTIAL TROLLEY SERVICE (PEAK SEASON)



## CONCEPT #1 - TO/FROM AMPHITHEATER/PRESIDENTIAL LIBRARY /OFFSITE PARKING AREAS

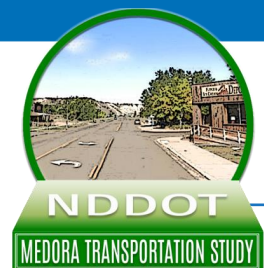


## CONCEPT #2- ADDITIONAL TROLLEY STOPS IN TOWN & SOUTH OF RAILROAD (NOT SHOWN)





# THEODORE ROOSEVELT PRESIDENTIAL LIBRARY/AMPHITHEATRE ACCESS



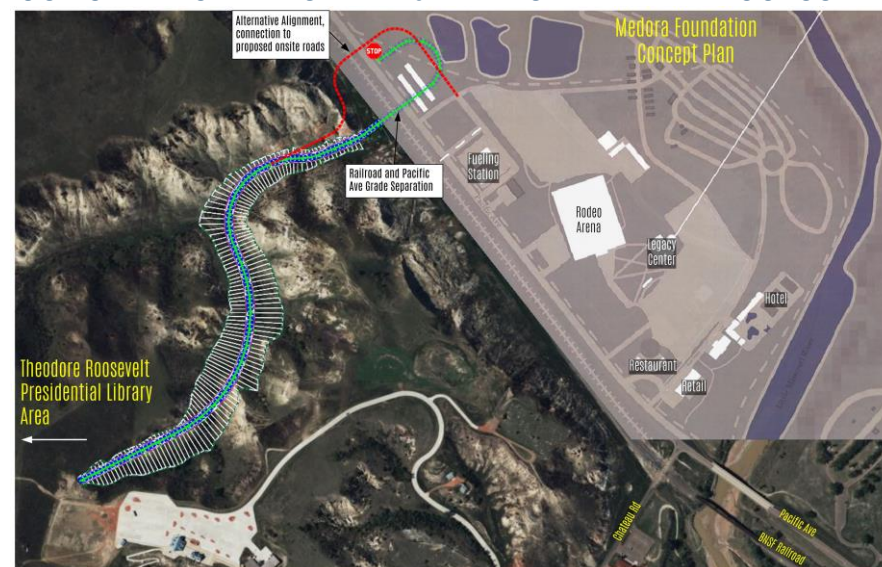
## CONCEPT #1 - EXISTING CHATEAU ROAD ACCESS



## CONCEPT #2 - EASTERN GRADE SEPARATED ACCESS

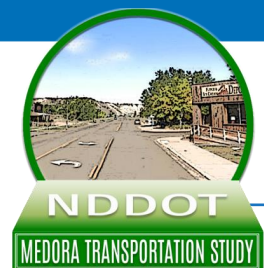


## CONCEPT #3 - WESTERN GRADE SEPARATED ACCESS





# INPUT & COMMUNICATIONS



## COMMENTS?

Please email written comments to [comments@civilsience.com](mailto:comments@civilsience.com) with "Public Input" in the subject line

**NDDOT CONSULTANT:**  
Civil Science, Inc.,  
Kyle J. Comer, PE Project Manager

**NDDOT LOCAL GOVERNMENT ENGINEER:**  
Stacey Hanson, PE

**ONGOING STUDY INFORMATION:**  
[dot.nd.gov/MedoraStudy](http://dot.nd.gov/MedoraStudy)



SCAN ME



## NDDOT - MEDORA TRANSPORTATION STUDY

Public Input Meeting  
October 2, 2022  
Comment Form

Please return this form to the project team at the completion of the meeting. Or send by October 17, 2022 to:  
Kyle Comer, Civil Science, Inc., 531 W Villard St, Suite 1, Dickinson, ND 58601 (Comments may also be submitted via  
email to: [comments@civilsience.com](mailto:comments@civilsience.com) with "Public Input" in the subject line)

1. Name/Contact Information

Name \_\_\_\_\_ Phone \_\_\_\_\_

Address \_\_\_\_\_ Email \_\_\_\_\_

2. THEODORE ROOSEVELT PRESIDENTIAL LIBRARY ACCESS: Please provide your comments regarding the proposed alternatives. Which alternative do you prefer, and why?

\_\_\_ Alternative 1: Western Access \_\_\_ Alternative 2: Eastern Access

3. I-94 INTERCHANGE IMPROVEMENTS: Please provide your input on the potential Exit 27 Interchange improvements.

4. THEODORE ROOSEVELT NATIONAL PARK ENTRANCE: What concerns do you have regarding the proposed intersection improvements to facilitate traffic movements into the Park?

5. PACIFIC AVENUE CONFIGURATION: Please provide your input on roundabouts to improve the flow of traffic on Pacific Ave.

Proposed Recommended Alternatives: Please provide your comments regarding the proposed roadway section alternatives. Which alternative do you prefer?

\_\_\_ No Build \_\_\_ 1a. Roundabouts - 2 lane/Flex Transit Lane  
(Parking removed north side/peak season)

\_\_\_ 1b. Roundabouts - 3 Lane, Bulb-outs, Sharrows, crosswalks  
(Matching existing cross section)

(see other side)