

December 5, 2023

ADDENDUM 2 – JOB 23341

TO: All prospective bidders on Projects NH-9-999(477) and NH-7-002(172)053, Job No. 23341 scheduled for the December 8, 2023 bid opening.

The following revision(s) shall be made:

Plan Revisions:

See attached summary from Jason Thorenson, P.E. dated December 5, 2023 for an explanation.

Request for Proposal Revisions:

- Remove and replace pages 5 thru 8 of 10 of the Proposal pages located at the beginning of the Request for Proposal with pages revised December 5, 2023.
- Bid Item Changes are summarized in the Plan Addendum Summary and Approval.

This addendum is to be incorporated into the bidder's proposal for this project. AASHTOWare Project Bids files should be updated by downloading the addendum file from the Bid Express on-line bidding exchange at <http://www.bidx.com/> and load it into the AASHTOWare Project Bids program.



PHILLIP MURDOFF, P.E. – CONSTRUCTION SERVICES ENGINEER

80: jwj

Enclosure

PLAN ADDENDUM SUMMARY AND APPROVAL

PROJECT INFORMATION			
Project:	NH-7-002(172)053	PCN:	22605
Location:	CITY OF RAY - EB/WB		
Date:	12/5/2023	Lead Designer:	Kyle Evert
Bid Opening Date:	12/8/2023	JOB#:	23341 Addendum#: 2

PLAN SHEET CHANGES		
Section	Sheet	Description
8	1-2	Updated quantity for Spec 748 Code 0140 "Cub & Gutter – Type I".
130	1-2	Added section 130

CHANGES MADE TO BID ITEMS FOR JOB					
Spec	Code	Description	Unit	Previous Quantity	Revised Quantity
748	0140	Cub & Gutter – Type I	LF	18	75

APPROVAL

Should the revisions described above be processed as a plan addendum?

Yes No

Jason Thorenson _____

12/05/23
Date

Jason Thorenson, P.E. – Bridge Engineer or

BID ITEMS

Projects: NH-9-999(477) (PCN-23341) and NH-7-002(172)053 (PCN-22605)

Bidder must type or neatly print unit prices in numerals, make extensions for each item, and total. Do not carry unit prices further than three (3) decimal places.

Item No.	Spec No.	Code No.	Description	Unit	Approx. Quantity	Unit Price		Amount	
						\$\$\$\$	000	\$\$\$\$	00
001	103	0100	CONTRACT BOND	L SUM	1.				
002	107	0100	RAILWAY PROTECTION INSURANCE	L SUM	1.				
003	107	0140	RAILROAD COORDINATION	L SUM	1.				
004	202	0101	REMOVAL OF CONCRETE	EA	2.				
005	202	0111	REMOVAL OF CONCRETE	L SUM	1.				
006	202	0114	REMOVAL OF CONCRETE PAVEMENT	SY	75.				
007	202	0132	REMOVAL OF BITUMINOUS SURFACING	SY	80.				
008	202	0350	REMOVAL OF TEMPORARY BYPASS	EA	2.				
009	203	0109	TOPSOIL	CY	53.100				
010	210	0099	CLASS 1 EXCAVATION	L SUM	1.				
011	210	0210	FOUNDATION FILL	CY	91.				
012	256	0200	RIPRAP GRADE II	CY	340.				
013	302	0120	AGGREGATE BASE COURSE CL 5	TON	678.				
014	430	0500	COMMERCIAL GRADE HOT MIX ASPHALT	TON	400.				
015	550	3005	CONCRETE MEDIAN PAVEMENT	SY	84.				
016	570	0240	DOWELED CONTRACTION JOINT ASSEMBLY	LF	192.				

BID ITEMS

Projects: NH-9-999(477) (PCN-23341) and NH-7-002(172)053 (PCN-22605)

Bidder must type or neatly print unit prices in numerals, make extensions for each item, and total. Do not carry unit prices further than three (3) decimal places.

Item No.	Spec No.	Code No.	Description	Unit	Approx. Quantity	Unit Price		Amount	
						\$\$\$\$	000	\$\$\$\$	00
017	570	0706	13.5IN CONCRETE PAVEMENT REPAIR-FULL DEPTH-DOWEL	SY	585.				
018	602	0130	CLASS AAE-3 CONCRETE	CY	40.				
019	602	1131	CLASS AE-3 CONCRETE-BOX CULVERT	CY	52.100				
020	602	1134	PILE SUPPORTED APPROACH SLAB	SY	327.800				
021	602	1135	BRIDGE APPROACH SLAB-REMOVE & REPLACE	SY	291.				
022	602	1250	PENETRATING WATER REPELLENT TREATMENT	SY	3,212.				
023	602	1260	BRIDGE DECK CRACK SEALING	LF	5,100.				
024	612	0114	REINFORCING STEEL-GRADE 60-BOX CULVERT	LBS	10,262.				
025	612	0115	REINFORCING STEEL-GRADE 60	LBS	894.				
026	612	0116	REINFORCING STEEL-GRADE 60-EPOXY COATED	LBS	6,293.				
027	650	0805	DECK SPALL REPAIR	SF	18.				
028	702	0100	MOBILIZATION	L SUM	1.				
029	704	0100	FLAGGING	MHR	90.				
030	704	1000	TRAFFIC CONTROL SIGNS	UNIT	3,355.				
031	704	1038	ATTENUATION DEVICE-TYPE B-40	EA	4.				
032	704	1048	PORTABLE RUMBLE STRIPS	EA	6.				

BID ITEMS

Projects: NH-9-999(477) (PCN-23341) and NH-7-002(172)053 (PCN-22605)

Bidder must type or neatly print unit prices in numerals, make extensions for each item, and total. Do not carry unit prices further than three (3) decimal places.

Item No.	Spec No.	Code No.	Description	Unit	Approx. Quantity	Unit Price		Amount	
						\$\$\$\$	000	\$\$\$\$	00
033	704	1052	TYPE III BARRICADE	EA	8.				
034	704	1060	DELINEATOR DRUMS	EA	156.				
035	704	1067	TUBULAR MARKERS	EA	54.				
036	704	1072	FLEXIBLE DELINEATORS	EA	192.				
037	704	1087	SEQUENCING ARROW PANEL-TYPE C	EA	2.				
038	704	1500	OBLITERATION OF PAVEMENT MARKING	SF	852.				
039	704	3511	STATE FURNISHED MEDIAN BARRIER	LF	1,200.				
040	709	0155	GEOSYNTHETIC MATERIAL TYPE RR	SY	337.				
041	748	0120	CURB & GUTTER MOUNTABLE-TYPE I	LF	18.				
042	748	0140	CURB & GUTTER-TYPE I	LF	75.				
043	762	0110	EPOXY PVMT MK 4IN LINE-GROOVED	LF	42.				
044	762	0112	EPOXY PVMT MK MESSAGE	SF	208.				
045	762	0113	EPOXY PVMT MK 4IN LINE	LF	9,090.				
046	762	0115	EPOXY PVMT MK 8IN LINE	LF	1,468.				
047	762	0420	SHORT TERM 4IN LINE-TYPE R	LF	13,508.				
048	762	0426	SHORT TERM 24IN LINE-TYPE R	LF	130.				

BID ITEMS

Projects: NH-9-999(477) (PCN-23341) and NH-7-002(172)053 (PCN-22605)

Bidder must type or neatly print unit prices in numerals, make extensions for each item, and total. Do not carry unit prices further than three (3) decimal places.

Item No.	Spec No.	Code No.	Description	Unit	Approx. Quantity	Unit Price		Amount	
						\$\$\$\$	000	\$\$\$\$	00
049	764	0145	W-BEAM GUARDRAIL END TERMINAL	EA	2.				
050	764	0150	REMOVE & RESET GUARDRAIL	LF	129.				
051	930	8230	SHORING	EA	6.				
052	930	8644	SILICONE SEALANT	LF	1,280.				
053	930	8671	CONCRETE SLEEPER SLAB	SY	66.				
054	930	8700	3 IN EXPANSION JOINT	LF	112.				
055	930	9586	PRESSURE RELIEF JOINT	LF	48.				
056	930	9612	SPALL REPAIR	SF	168.800				
057	930	9639	APPROACH SLAB LIP REPAIR	LF	85.100				
058	930	9660	ABUTMENT REPAIR	L SUM	1.				
059	930	9671	BOX CULVERT JOINT REPAIR	EA	89.				
060	950	9712	JOINT TREATMENT	LF	192.				
			TOTAL SUM BID						

ESTIMATE OF QUANTITIES

STATE	PROJECT NO.	SECTION NO.	SHEET NO.
ND	NH-7-002(172)053	8	1

REVISED 12/04/2023

SPEC CODE	ITEM DESCRIPTION	UNIT	MAINLINE	TOTAL
-----	-----	-----	-----	-----
103	0100 CONTRACT BOND	L SUM	0.52	0.52
107	0100 RAILWAY PROTECTION INSURANCE	L SUM	1	1
107	0140 RAILROAD COORDINATION	L SUM	1	1
202	0111 REMOVAL OF CONCRETE	L SUM	1	1
202	0114 REMOVAL OF CONCRETE PAVEMENT	SY	75	75
202	0132 REMOVAL OF BITUMINOUS SURFACING	SY	80	80
202	0350 REMOVAL OF TEMPORARY BYPASS	EA	2	2
203	0109 TOPSOIL	CY	17	17
210	0099 CLASS 1 EXCAVATION	L SUM	1	1
302	0120 AGGREGATE BASE COURSE CL 5	TON	678	678
430	0500 COMMERCIAL GRADE HOT MIX ASPHALT	TON	400	400
550	3005 CONCRETE MEDIAN PAVEMENT	SY	84	84
570	0240 DOWELED CONTRACTION JOINT ASSEMBLY	LF	192	192
570	0706 13.5IN CONCRETE PAVEMENT REPAIR-FULL DEPTH-DOWELED	SY	585	585
602	0130 CLASS AAE-3 CONCRETE	CY	40	40
602	1134 PILE SUPPORTED APPROACH SLAB	SY	327.8	327.8
602	1135 BRIDGE APPROACH SLAB-REMOVE & REPLACE	SY	291	291
602	1250 PENETRATING WATER REPELLENT TREATMENT	SY	3,212	3,212
602	1260 BRIDGE DECK CRACK SEALING	LF	5,100	5,100
612	0115 REINFORCING STEEL-GRADE 60	LBS	894	894
612	0116 REINFORCING STEEL-GRADE 60-EPOXY COATED	LBS	6,293	6,293
650	0805 DECK SPALL REPAIR	SF	18	18
702	0100 MOBILIZATION	L SUM	0.39	0.39
704	1000 TRAFFIC CONTROL SIGNS	UNIT	1,647	1,647
704	1052 TYPE III BARRICADE	EA	6	6
704	1060 DELINEATOR DRUMS	EA	56	56
704	1072 FLEXIBLE DELINEATORS	EA	192	192
704	1087 SEQUENCING ARROW PANEL-TYPE C	EA	2	2
704	1500 OBLITERATION OF PAVEMENT MARKING	SF	852	852
748	0120 CURB & GUTTER MOUNTABLE-TYPE I	LF	18	18
748	0140 CURB & GUTTER-TYPE I	LF	75	75
762	0110 EPOXY PVMT MK 4IN LINE-GROOVED	LF	42	42
762	0112 EPOXY PVMT MK MESSAGE	SF	208	208

ESTIMATE OF QUANTITIES

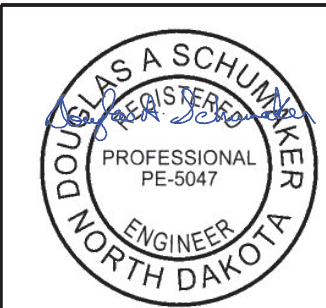
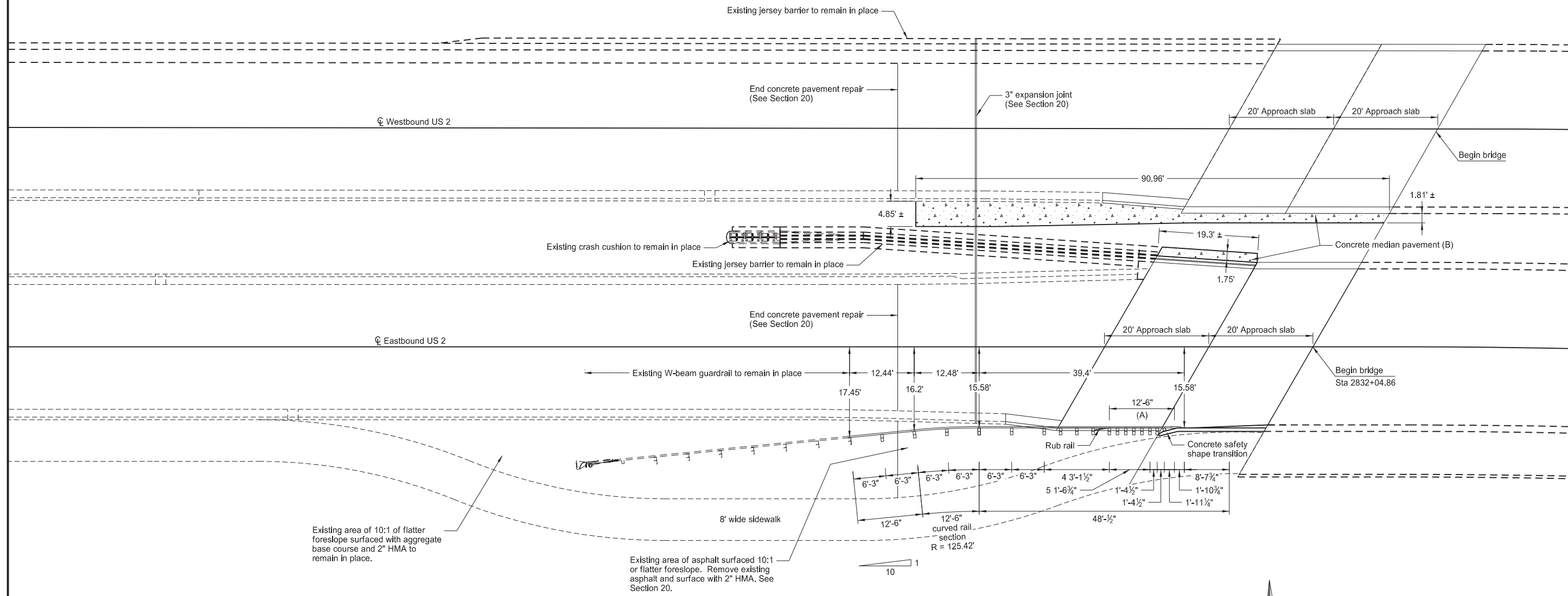
STATE	PROJECT NO.	SECTION NO.	SHEET NO.
ND	NH-7-002(172)053	8	2

REVISED 12/04/2023

SPEC CODE	ITEM DESCRIPTION	UNIT	MAINLINE	TOTAL
-----	-----	-----	-----	-----
762 0113	EPOXY PVMT MK 4IN LINE	LF	9,090	9,090
762 0115	EPOXY PVMT MK 8IN LINE	LF	1,468	1,468
762 0420	SHORT TERM 4IN LINE-TYPE R	LF	13,508	13,508
762 0426	SHORT TERM 24IN LINE-TYPE R	LF	130	130
764 0145	W-BEAM GUARDRAIL END TERMINAL	EA	2	2
764 0150	REMOVE & RESET GUARDRAIL	LF	129	129
930 8230	SHORING	EA	4	4
930 8644	SILICONE SEALANT	LF	1,280	1,280
930 8671	CONCRETE SLEEPER SLAB	SY	66	66
930 8700	3 IN EXPANSION JOINT	LF	112	112
930 9586	PRESSURE RELIEF JOINT	LF	48	48
930 9612	SPALL REPAIR	SF	43.3	43.3
930 9639	APPROACH SLAB LIP REPAIR	LF	85.1	85.1
930 9660	ABUTMENT REPAIR	L SUM	1	1

23 USC § 409 Documents
 NDDOT Reserves All Objections

STATE	PROJECT NO.	SECTION NO.	SHEET NO.
ND	NH-7-002(172)053	130	1



01/06/22

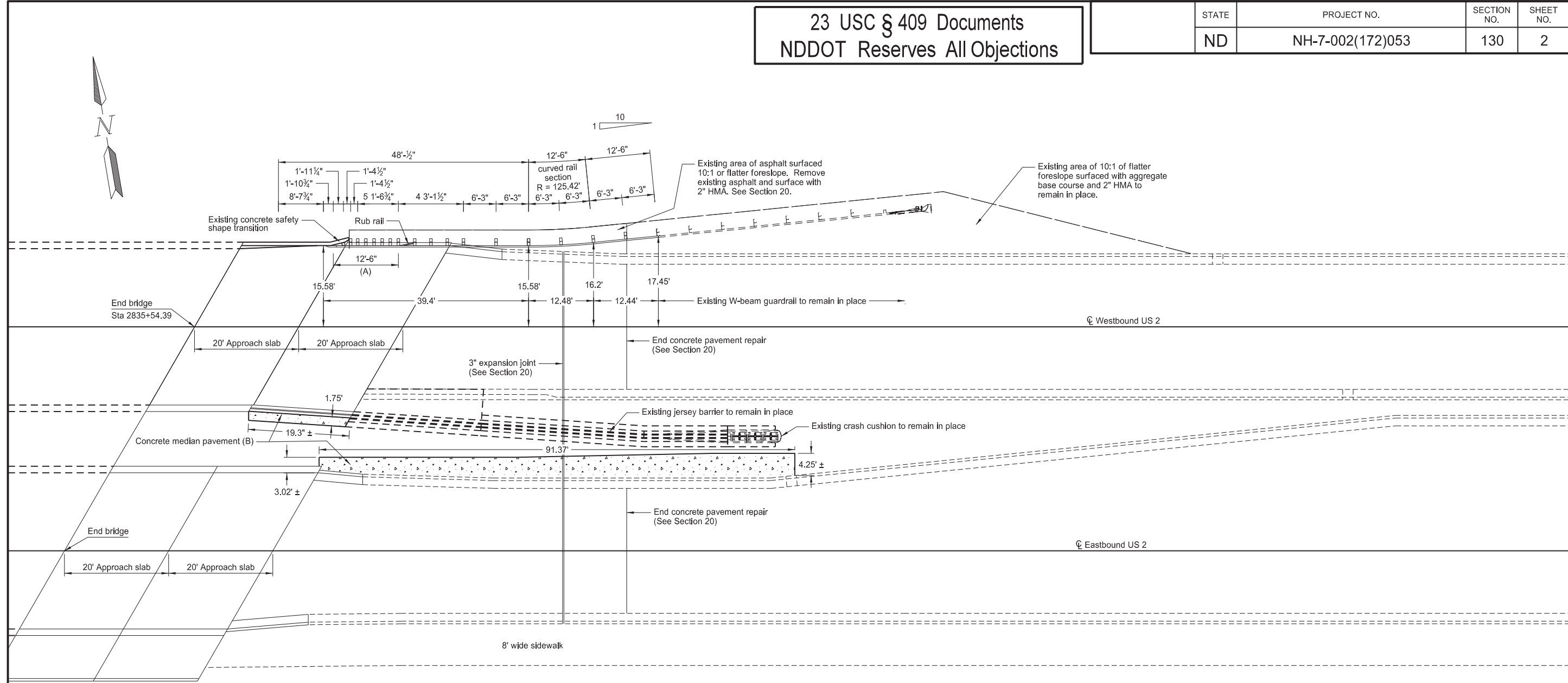
SPEC	CODE	BID ITEM	QTY	UNIT
550	3005	CONCRETE MEDIAN PAVEMENT	40	SY
764	0150	REMOVE & RESET GUARDRAIL Sta 2831+15.85 to 2831+80.17 Rt	64.4	LF

- (A) 12'-6" double rail section.
- (B) Pavement thickness varies from 9" at the back side of the curb to 4". See Standard D-750-2.

W-Beam Guardrail Layout
 West End of Burlington Northern RR Overhead
 RP 53.731
 US 2

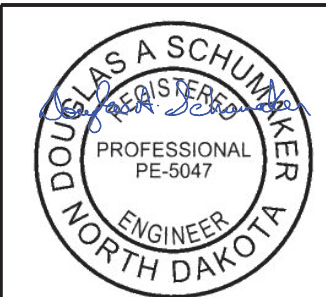
23 USC § 409 Documents
 NDDOT Reserves All Objections

STATE	PROJECT NO.	SECTION NO.	SHEET NO.
ND	NH-7-002(172)053	130	2



SPEC	CODE	BID ITEM	QTY	UNIT
550	3005	CONCRETE MEDIAN PAVEMENT	43.9	SY
764	0150	REMOVE & RESET GUARDRAIL Sta 2835+79.14 to 2836+43.46 Lt	64.4	LF

- (A) 12'-6" double rail section.
- (B) Pavement thickness varies from 9" at the back side of the curb to 4". See Standard D-750-2.



01/06/22

W-Beam Guardrail Layout
 East End of Burlington Northern RR Overhead
 RP 53.731
 US 2