

December 6, 2023

ADDENDUM 3 – JOB 23279

TO: All prospective bidders on Projects SS-8-018(106)064, Job No. 23279 scheduled for the December 8, 2023 bid opening.

The following revision(s) shall be made:

Plan Revisions:

See attached summary from Jason Thorenson, P.E. dated December 5, 2023 for an explanation.

Request for Proposal Revisions:

- Remove and replace pages 5 thru 9 of 11 of the Proposal pages located at the beginning of the Request for Proposal with pages revised December 5, 2023.
- Bid Item Changes are summarized in the Plan Addendum Summary and Approval.

This addendum is to be incorporated into the bidder's proposal for this project. AASHTOWare Project Bids files should be updated by downloading the addendum file from the Bid Express on-line bidding exchange at <http://www.bidx.com/> and load it into the AASHTOWare Project Bids program.



PHILLIP MURDOFF, P.E. – CONSTRUCTION SERVICES ENGINEER

80: jwj

Enclosure

PLAN ADDENDUM SUMMARY AND APPROVAL

PROJECT INFORMATION		
Project:	SS-8-018(106)064	PCN: 23279
Location:	8 NORTH OF LEONARD, MAPLE RIVER	
Date:	12/5/2023	Lead Designer: Kyle Evert
Bid Opening Date:	12/8/2023	JOB#: 23279 Addendum#: 3

PLAN SHEET CHANGES		
Section	Sheet	Description
2	1	Additional Bid Item required extra page on quantities sheet.
8	1	Added bid item spec 604 Code 9620 PRESTRESSED BOX BEAM-33IN
170	4	Added bid item spec 604 Code 9620 PRESTRESSED BOX BEAM-33IN to Bridge Bid Items
170	15	Adjusted beam length from 65.83 LF to 65.88 LF
170	17	Double dimension added to detail

CHANGES MADE TO BID ITEMS FOR JOB					
Spec	Code	Description	Unit	Previous Quantity	Revised Quantity
604	9620	PRESTRESSED BOX BEAM-33IN	LF	0	590.7

APPROVAL

Should the revisions described above be processed as a plan addendum?

X Yes _____ No

Jason Thorenson _____

12/05/23
Date

Jason Thorenson, P.E. – Bridge Engineer or

BID ITEMS

Project: SS-8-018(106)064 (PCN-23279)

Bidder must type or neatly print unit prices in numerals, make extensions for each item, and total. Do not carry unit prices further than three (3) decimal places.

Item No.	Spec No.	Code No.	Description	Unit	Approx. Quantity	Unit Price		Amount	
						\$\$\$\$	000	\$\$\$\$	00
001	103	0100	CONTRACT BOND	L SUM	1.				
002	202	0105	REMOVAL OF STRUCTURE	L SUM	1.				
003	202	0350	REMOVAL OF TEMPORARY BYPASS	EA	1.				
004	202	0400	REMOVAL OF RIPRAP - LOOSE ROCK	CY	674.				
005	203	0101	COMMON EXCAVATION-TYPE A	CY	51.				
006	203	0109	TOPSOIL	CY	2,710.				
007	203	0113	COMMON EXCAVATION-WASTE	CY	2,043.				
008	203	0140	BORROW-EXCAVATION	CY	12,007.				
009	203	0218	GUARDRAIL EMBANKMENT	EA	2.				
010	210	0099	CLASS 1 EXCAVATION	L SUM	1.				
011	210	0111	CLASS 2 EXCAVATION	L SUM	1.				
012	210	0201	FOUNDATION PREPARATION	EA	1.				
013	216	0100	WATER	M GAL	162.				
014	251	0200	SEEDING CLASS II	ACRE	2.500				
015	251	1000	WETLAND SEED	ACRE	.580				
016	251	2000	TEMPORARY COVER CROP	ACRE	2.300				

BID ITEMS

Project: SS-8-018(106)064 (PCN-23279)

Bidder must type or neatly print unit prices in numerals, make extensions for each item, and total. Do not carry unit prices further than three (3) decimal places.

Item No.	Spec No.	Code No.	Description	Unit	Approx. Quantity	Unit Price		Amount	
						\$\$\$\$\$	000	\$\$\$\$\$	00
017	253	0101	STRAW MULCH	ACRE	5.380				
018	256	0200	RIPRAP GRADE II	CY	948.				
019	261	0112	FIBER ROLLS 12IN	LF	5,805.				
020	261	0113	REMOVE FIBER ROLLS 12IN	LF	3,635.				
021	262	0100	FLOTATION SILT CURTAIN	LF	105.				
022	262	0101	REMOVE FLOTATION SILT CURTAIN	LF	105.				
023	302	0100	SALVAGED BASE COURSE	TON	2,326.				
024	411	0105	MILLING PAVEMENT SURFACE	SY	932.				
025	430	0500	COMMERCIAL GRADE HOT MIX ASPHALT	TON	1,139.				
026	602	0130	CLASS AAE-3 CONCRETE	CY	165.900				
027	602	1130	CLASS AE-3 CONCRETE	CY	126.500				
028	602	1134	PILE SUPPORTED APPROACH SLAB	SY	115.500				
029	602	1250	PENETRATING WATER REPELLENT TREATMENT	SY	1,508.				
030	602	1260	BRIDGE DECK CRACK SEALING	LF	298.				
031	604	9620	PRESTRESSED BOX BEAM-33IN	LF	590.700				
032	612	0115	REINFORCING STEEL-GRADE 60	LBS	11,767.				

BID ITEMS

Project: SS-8-018(106)064 (PCN-23279)

Bidder must type or neatly print unit prices in numerals, make extensions for each item, and total. Do not carry unit prices further than three (3) decimal places.

Item No.	Spec No.	Code No.	Description	Unit	Approx. Quantity	Unit Price		Amount	
						\$\$\$\$	000	\$\$\$\$	00
033	612	0116	REINFORCING STEEL-GRADE 60-EPOXY COATED	LBS	34,676.				
034	616	0360	STRUCTURAL STEEL	LBS	850.600				
035	622	0020	STEEL PILING HP 10 X 42	LF	480.				
036	622	0040	STEEL PILING HP 12 X 53	LF	325.				
037	622	0060	STEEL PILING HP 14 X 73	LF	660.				
038	702	0100	MOBILIZATION	L SUM	1.				
039	704	0100	FLAGGING	MHR	200.				
040	704	1000	TRAFFIC CONTROL SIGNS	UNIT	1,179.				
041	704	1048	PORTABLE RUMBLE STRIPS	EA	2.				
042	704	1052	TYPE III BARRICADE	EA	7.				
043	704	1060	DELINEATOR DRUMS	EA	18.				
044	704	1067	TUBULAR MARKERS	EA	27.				
045	704	1080	STACKABLE VERTICAL PANELS	EA	57.				
046	704	1500	OBLITERATION OF PAVEMENT MARKING	SF	175.				
047	706	0400	FIELD OFFICE	EA	1.				
048	706	0500	AGGREGATE LABORATORY	EA	1.				

BID ITEMS

Project: SS-8-018(106)064 (PCN-23279)

Bidder must type or neatly print unit prices in numerals, make extensions for each item, and total. Do not carry unit prices further than three (3) decimal places.

Item No.	Spec No.	Code No.	Description	Unit	Approx. Quantity	Unit Price		Amount	
						\$\$\$\$	000	\$\$\$\$	00
049	709	0100	GEOSYNTHETIC MATERIAL TYPE G	SY	56.				
050	709	0151	GEOSYNTHETIC MATERIAL TYPE R1	SY	2,334.				
051	714	4099	PIPE CONDUIT 18IN-APPROACH	LF	298.				
052	714	4157	PIPE CONDUIT 84IN-APPROACH	LF	760.				
053	720	0130	IRON PIN R/W MONUMENTS	EA	5.				
054	748	0141	CURB & GUTTER-TYPE 1 SPECIAL	LF	30.				
055	754	0206	STEEL GALV POSTS-TELESCOPING PERFORATED TUBE	LF	15.				
056	754	0592	RESET SIGN PANEL	EA	1.				
057	754	0596	RESET MILE POST	EA	1.				
058	760	0027	SINUSOIDAL RUMBLE STRIP - ASPHALT CENTERLINE	MILE	.040				
059	762	0420	SHORT TERM 4IN LINE-TYPE R	LF	3,609.				
060	762	1104	PVMT MK PAINTED 4IN LINE	LF	3,459.				
061	764	0131	W-BEAM GUARDRAIL	LF	192.				
062	764	0145	W-BEAM GUARDRAIL END TERMINAL	EA	2.				
063	764	0151	REMOVE W-BEAM GUARDRAIL & POSTS	LF	192.				
064	764	2081	REMOVE END TREATMENT & TRANSITION	EA	2.				

BID ITEMS

Project: SS-8-018(106)064 (PCN-23279)

Bidder must type or neatly print unit prices in numerals, make extensions for each item, and total. Do not carry unit prices further than three (3) decimal places.

Item No.	Spec No.	Code No.	Description	Unit	Approx. Quantity	Unit Price		Amount	
						\$\$\$\$\$	000	\$\$\$\$\$	00
065	900	1000	TEMPORARY STREAM DIVERSION	EA	1.				
066	930	8230	SHORING	EA	1.				
067	930	9537	ABUTMENT UNDERDRAIN SYSTEM	EA	1.				
			TOTAL SUM BID						

TABLE OF CONTENTS

PLAN SECTIONS

Section	Page(s)	Description
1	1	Title Sheet
2	1	Table of Contents
4	1	Scope of Work
6	1 - 3	Notes
6	4	Environmental Notes
8	1 - 3	Quantities
10	1	Basis of Estimate
20	1	General Details
30	1 - 3	Typical Sections
40	1	Removals
51	1	Allowable Pipe List
60	1 - 3	Plan & Profile
75	1 - 2	Wetland Impacts
76	1	Temporary Erosion Control
77	1	Permanent Erosion Control
81	1	Survey Coordinate and Curve Data
82	1 - 3	Survey Data Layouts
90	1	Paving Layouts
100	1 - 3	Work Zone Traffic Control
110	1 - 2	Signing
120	1	Pavement Marking
130	1 - 2	Guardrail
170	1 - 27	Bridges and Box Culverts
175	1	Soil Boring Logs
200	1 - 13	Cross Sections

SPECIAL PROVISIONS

Number	Description
SSP 1	Temporary Erosion and Sediment Best Management Practices
SSP 2	Federal Migratory Bird Treaty Act
PSP 49(23)	Permits and Environmental Considerations
SP 214(23)	Temporary Water Diversion
SP 211(23)	Commercial Grade Asphalt
153(23)	Utility Coordination

LIST OF STANDARD DRAWINGS

Number	Description
D-101-1, 2,3,4	NDDOT Abbreviations
D-101-10	NDDOT Utility Company and Organization Abbreviations
D-101-20, 21	Line Styles
D-101-30, 31,32,33	Symbols
D-101-40	Cross Section Legend
D-203-8	Standard Rural Approaches
D-260-1	Erosion And Siltation Controls - Silt Fence
D-261-1	Erosion Control - Fiber Roll Placement Details
D-704-7	Breakaway Systems For Construction Zone Signs - Perforated Tube
D-704-8	Breakaway Systems For Construction Zone Signs - U-Channel Post
D-704-9	Construction Sign Details - Terminal And Guide Signs
D-704-10	Construction Sign Details - Regulatory Signs
D-704-11, 11A	Construction Sign Details - Warning Signs
D-704-13	Barricade And Channelizing Device Details
D-704-14	Construction Sign Punching And Mounting Details
D-704-15	Road Closure Layouts
D-704-22	Construction Truck And Temporary Detour Layouts
D-704-24	Shoulder Closures And Bridge Painting Layouts
D-704-27	Mobile Operation (Pavement Marking)
D-704-33	Two-Lane Roadway Portable Rumble Strips
D-704-50	Portable Sign Support Assembly
D-704-56	Mobile Operation - Grinding Shoulder Rumble Strips
D-706-1	Bituminous Laboratory
D-714-4	Round Corrugated Steel Pipe Culverts And End Sections
D-714-25	Transverse Mainline Pipe Installation Detail - Pipes More Than 4 Feet Below Top of Subgrade
D-748-1	Curb & Gutter And Valley Gutter
D-754-19	(Conventional Use) Reference Markers
D-754-23	Perforated Tube Assembly Details
D-754-24	Mounting Details Perforated Tube
D-754-24A	Breakaway Coupler System For Perforated Tubes
D-754-25	Mounting Details Perforated Tube
D-754-26, 29.32	Sign Punching, Stringer and Support Location Details Regulatory, Warning and Guide Signs
D-754-47, 48,50	Sign Punching, Stringer and Support Location Details For Variable Length Signs
D-754-51	Sign Punching, Stringer and Support Location Details - Route Marker Signs
D-754-82	Object Markers
D-754-86	911 Sign Support Information And Sign Details
D-754-87	Sign Punching, Stringer And Support Location Details For Street Name Signs And 911 Signs
D-760-4	Rumble Strips Undivided Highways (Shoulders Less Than 4')
D-762-4	Pavement Marking
D-762-11	Short-Term Pavement Marking
D-764-38	MGS Flared Energy Absorbing Terminal - Wood Post
D-764-40	MGS W-Beam Guardrail General Details
D-764-48	Typical Grading at Bridge Ends with MGS W-Beam Guardrail
D-764-60	MGS W-Beam Transition with Approach Curb to Concrete Single Slope or Jersey Barrier
D-764-62	Jersey Barrier to Thrie Beam Connector Plate Details

ESTIMATE OF QUANTITIES

STATE	PROJECT NO.	SECTION NO.	SHEET NO.
ND	SS-8-018(106)064	8	1

REVISED 12/05/2023

SPEC CODE	ITEM DESCRIPTION	UNIT	MAINLINE	TOTAL
-----	-----	-----	-----	-----
103	0100 CONTRACT BOND	L SUM	1	1
202	0105 REMOVAL OF STRUCTURE	L SUM	1	1
202	0350 REMOVAL OF TEMPORARY BYPASS	EA	1	1
202	0400 REMOVAL OF RIPRAP - LOOSE ROCK	CY	674	674
203	0101 COMMON EXCAVATION-TYPE A	CY	51	51
203	0109 TOPSOIL	CY	2,710	2,710
203	0113 COMMON EXCAVATION-WASTE	CY	2,043	2,043
203	0140 BORROW-EXCAVATION	CY	12,007	12,007
203	0218 GUARDRAIL EMBANKMENT	EA	2	2
210	0099 CLASS 1 EXCAVATION	L SUM	1	1
210	0111 CLASS 2 EXCAVATION	L SUM	1	1
210	0201 FOUNDATION PREPARATION	EA	1	1
216	0100 WATER	M GAL	162	162
251	0200 SEEDING CLASS II	ACRE	2.5	2.5
251	1000 WETLAND SEED	ACRE	0.58	0.58
251	2000 TEMPORARY COVER CROP	ACRE	2.3	2.3
253	0101 STRAW MULCH	ACRE	5.38	5.38
256	0200 RIPRAP GRADE II	CY	948	948
261	0112 FIBER ROLLS 12IN	LF	5,805	5,805
261	0113 REMOVE FIBER ROLLS 12IN	LF	3,635	3,635
262	0100 FLOTATION SILT CURTAIN	LF	105	105
262	0101 REMOVE FLOTATION SILT CURTAIN	LF	105	105
302	0100 SALVAGED BASE COURSE	TON	2,326	2,326
411	0105 MILLING PAVEMENT SURFACE	SY	932	932
430	0500 COMMERCIAL GRADE HOT MIX ASPHALT	TON	1,139	1,139
602	0130 CLASS AAE-3 CONCRETE	CY	165.9	165.9
602	1130 CLASS AE-3 CONCRETE	CY	126.5	126.5
602	1134 PILE SUPPORTED APPROACH SLAB	SY	115.5	115.5
602	1250 PENETRATING WATER REPELLENT TREATMENT	SY	1,508	1,508
602	1260 BRIDGE DECK CRACK SEALING	LF	298	298
604	9620 PRESTRESSED BOX BEAM-33IN	LF	590.7	590.7
612	0115 REINFORCING STEEL-GRADE 60	LBS	11,767	11,767
612	0116 REINFORCING STEEL-GRADE 60-EPOXY COATED	LBS	34,676	34,676

ESTIMATE OF QUANTITIES

STATE	PROJECT NO.	SECTION NO.	SHEET NO.
ND	SS-8-018(106)064	8	2

REVISED 12/05/2023

SPEC CODE	ITEM DESCRIPTION	UNIT	MAINLINE	TOTAL
-----	-----	-----	-----	-----
616	0360 STRUCTURAL STEEL	LBS	850.6	850.6
622	0020 STEEL PILING HP 10 X 42	LF	480	480
622	0040 STEEL PILING HP 12 X 53	LF	325	325
622	0060 STEEL PILING HP 14 X 73	LF	660	660
702	0100 MOBILIZATION	L SUM	1	1
704	0100 FLAGGING	MHR	200	200
704	1000 TRAFFIC CONTROL SIGNS	UNIT	1,179	1,179
704	1048 PORTABLE RUMBLE STRIPS	EA	2	2
704	1052 TYPE III BARRICADE	EA	7	7
704	1060 DELINEATOR DRUMS	EA	18	18
704	1067 TUBULAR MARKERS	EA	27	27
704	1080 STACKABLE VERTICAL PANELS	EA	57	57
704	1500 OBLITERATION OF PAVEMENT MARKING	SF	175	175
706	0400 FIELD OFFICE	EA	1	1
706	0500 AGGREGATE LABORATORY	EA	1	1
709	0100 GEOSYNTHETIC MATERIAL TYPE G	SY	56	56
709	0151 GEOSYNTHETIC MATERIAL TYPE R1	SY	2,334	2,334
714	4099 PIPE CONDUIT 18IN-APPROACH	LF	298	298
714	4157 PIPE CONDUIT 84IN-APPROACH	LF	760	760
720	0130 IRON PIN R/W MONUMENTS	EA	5	5
748	0141 CURB & GUTTER-TYPE 1 SPECIAL	LF	30	30
754	0206 STEEL GALV POSTS-TELESCOPING PERFORATED TUBE	LF	15	15
754	0592 RESET SIGN PANEL	EA	1	1
754	0596 RESET MILE POST	EA	1	1
760	0027 SINUSOIDAL RUMBLE STRIP - ASPHALT CENTERLINE	MILE	0.04	0.04
762	0420 SHORT TERM 4IN LINE-TYPE R	LF	3,609	3,609
762	1104 PVMT MK PAINTED 4IN LINE	LF	3,459	3,459
764	0131 W-BEAM GUARDRAIL	LF	192	192
764	0145 W-BEAM GUARDRAIL END TERMINAL	EA	2	2
764	0151 REMOVE W-BEAM GUARDRAIL & POSTS	LF	192	192
764	2081 REMOVE END TREATMENT & TRANSITION	EA	2	2
900	1000 TEMPORARY STREAM DIVERSION	EA	1	1
930	8230 SHORING	EA	1	1

ESTIMATE OF QUANTITIES

STATE	PROJECT NO.	SECTION NO.	SHEET NO.
ND	SS-8-018(106)064	8	3

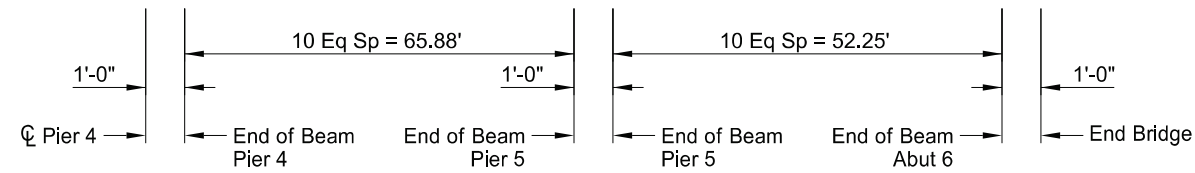
REVISED 12/05/2023

SPEC CODE	ITEM DESCRIPTION	UNIT	MAINLINE	TOTAL
-----	-----	-----	-----	-----
930	9537 ABUTMENT UNDERDRAIN SYSTEM	EA	1	1

23 U.S.C. § 407 Documents
 NDDOT Reserves All Objections

Revised 12/05/23	STATE	PROJECT NO.	SECTION NO.	SHEET NO.
	ND	SS-8-018(106)064	170	4

Beam 1	938.67	938.67	938.69	938.70	938.71	938.71	938.72	938.71	938.71	938.70	938.69	938.67	938.67	938.68	938.68	938.69	938.69	938.69	938.69	938.69	938.68	938.68	938.67	938.67	
Beam 2	938.84	938.84	938.85	938.86	938.87	938.88	938.88	938.88	938.87	938.86	938.85	938.84	938.84	938.84	938.85	938.85	938.86	938.86	938.86	938.86	938.85	938.85	938.84	938.84	938.84
Beam 3	939.00	939.00	939.01	939.03	939.04	939.04	939.04	939.04	939.04	939.03	939.01	939.00	939.00	939.01	939.01	939.02	939.02	939.02	939.02	939.02	939.01	939.01	939.00	939.00	939.00
Beam 4	938.84	938.84	938.85	938.86	938.87	938.88	938.88	938.88	938.87	938.86	938.85	938.84	938.84	938.84	938.85	938.85	938.86	938.86	938.86	938.86	938.85	938.85	938.84	938.84	938.84
Beam 5	938.67	938.67	938.69	938.70	938.71	938.71	938.72	938.71	938.71	938.70	938.69	938.67	938.67	938.68	938.68	938.69	938.69	938.69	938.69	938.68	938.68	938.68	938.67	938.67	938.67



Beam 1 is west beam.
 SCREED ELEVATION

BRIDGE BID ITEMS

SPEC	CODE	ITEM DESCRIPTION	UNIT	QUANTITY
202	0105	REMOVAL OF STRUCTURE	L SUM	1
210	0099	CLASS 1 EXCAVATION	L SUM	1
210	0111	CLASS 2 EXCAVATION	L SUM	1
210	0201	FOUNDATION PREPARATION	EA	1
602	0130	CLASS AAE-3 CONCRETE	CY	165.9
602	1130	CLASS AE-3 CONCRETE	CY	126.5
602	1134	PILE SUPPORTED APPROACH SLAB	SY	115.5
602	1250	PENETRATING WATER REPELLENT TREATMENT	SY	1,508
602	1260	BRIDGE DECK CRACK SEALING	LF	298
604	9620	PRESTRESSED BOX BEAM-33IN	LF	590.7
612	0115	REINFORCING STEEL-GRADE 60	LBS	11,767
612	0116	REINFORCING STEEL-GRADE 60-EPOXY COATED	LBS	34,676
616	0360	STRUCTURAL STEEL	LBS	850.6
622	0020	STEEL PILING HP 10 X 42	LF	480
622	0040	STEEL PILING HP 12 X 53	LF	325
622	0060	STEEL PILING HP 14 X 73	LF	660
930	8230	SHORING	EA	1
930	9537	ABUTMENT UNDERDRAIN SYSTEM	EA	1

NOTE:

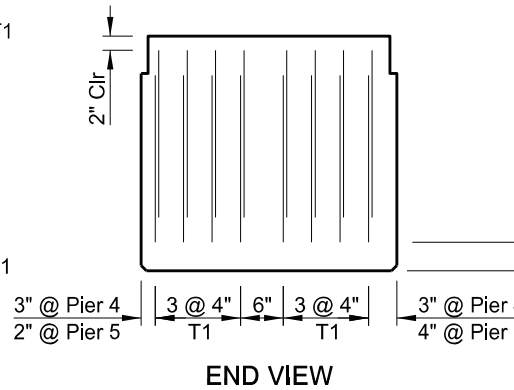
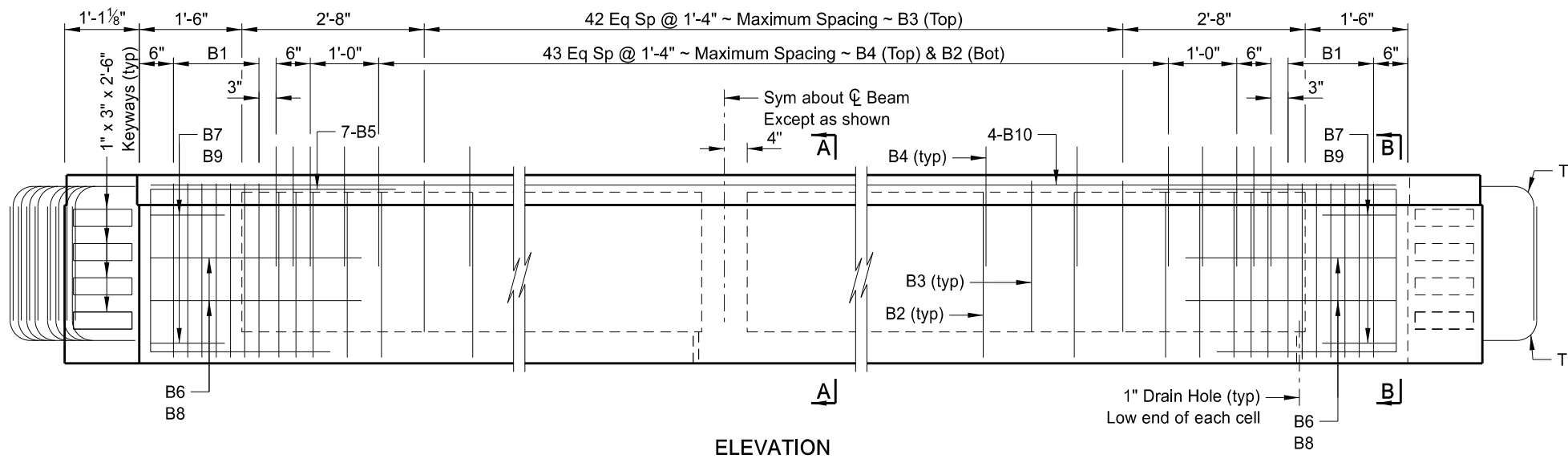
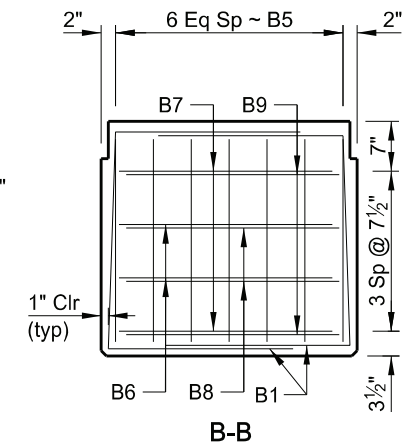
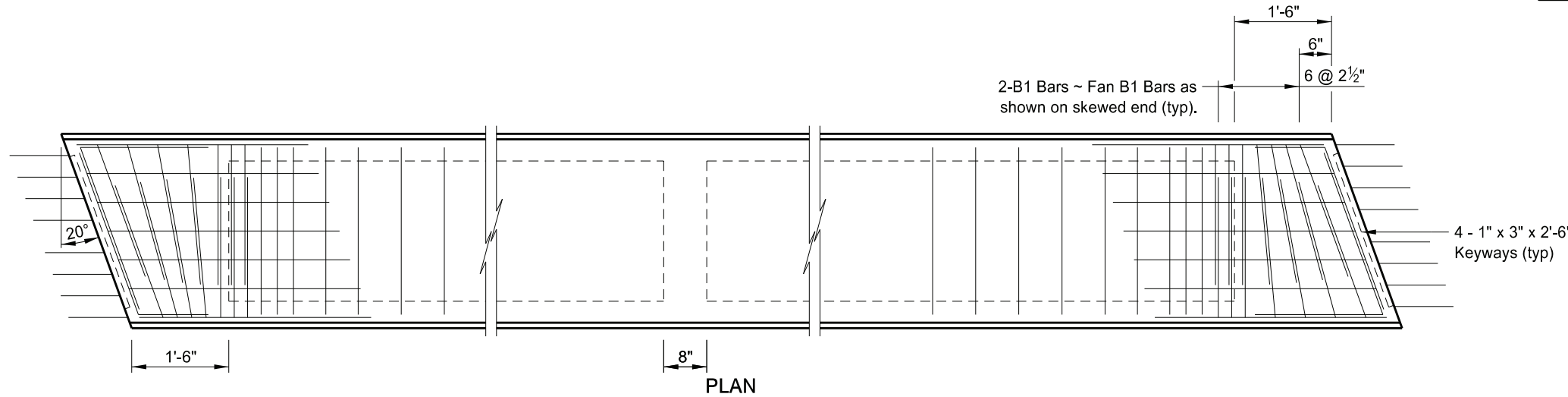
After deck and endwall concrete removal and prior to abutment removal, record the top of existing concrete beam elevations at \bar{C} Bearing. Submit the top of beam elevations to the Bridge Division for review to see if any adjustments need to be made to the bridge profile and/or bearing seat elevations. Allow the Bridge Division 3 days for review.



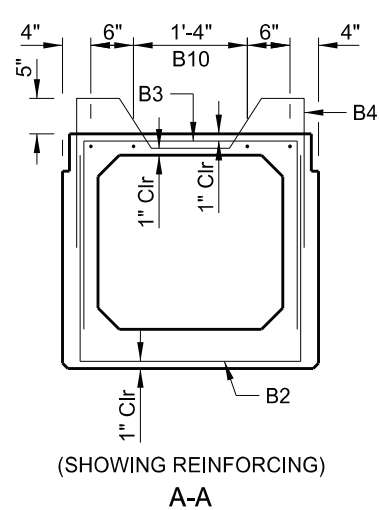
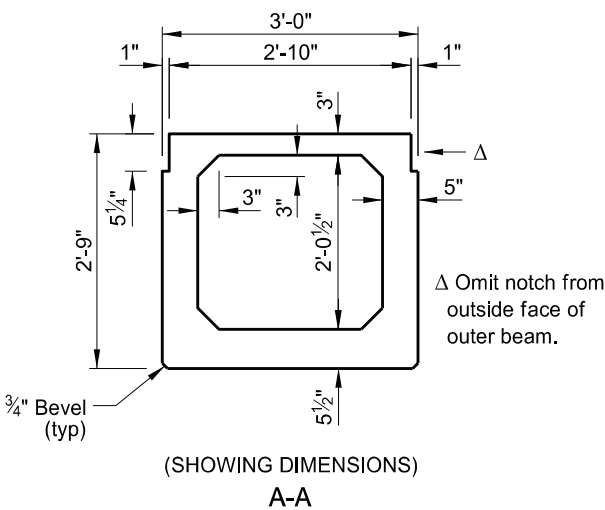
MAPLE RIVER	
SCREED ELEVATIONS, BID ITEMS & QUANTITIES	
DRAWING NO.	18-064.955-4

23 U.S.C. § 407 Documents
NDDOT Reserves All Objections

Revised 12/05/23	STATE	PROJECT NO.	SECTION NO.	SHEET NO.
	ND	SS-8-018(106)064	170	15

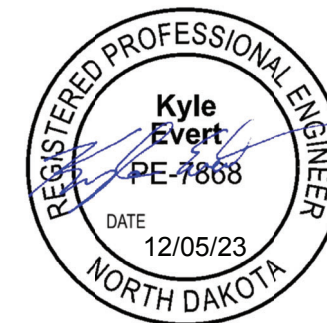


BAR LIST ~ ONE BEAM				
MARK	SIZE	NO.	LENGTH	SHAPE
B1	4	28	6'-11"	BENT
B2	4	52	7'-5"	BENT
B3	4	43	7'-0"	BENT
B4	4	52	6'-9"	BENT
B5	5	14	8'-7"	BENT
B6	4	4	5'-9"	BENT
B7	4	4	3'-9"	BENT
B8	4	4	6'-8"	BENT
B9	4	4	4'-8"	BENT
B10	4	8	34'-3"	STR
T1	4	32	4'-9"	STR



** Field bend as shown (Grade 40).

* Welded Wire Reinforcing with minimum circumferential steel area of 0.15 sq in per ft may be substituted for B2 and B3 bars.



BEAM SECTION DATA	
WT =	601.2 LBS/FT + 3171 LBS
CROSS SECTIONAL AREA =	558.5 IN ²
C.G. (FROM BOTTOM) =	14.85 IN
I =	73,708 IN ⁴
S _B =	4,964 IN ³

QUANTITIES (ONE BEAM)	
BEAM LENGTH	65.88 LF
MAPLE RIVER	
PRE-TENSIONED 33" X 36" PRESTRESSED SPREAD BOX BEAM	
DRAWING NO.	18-064.955-15

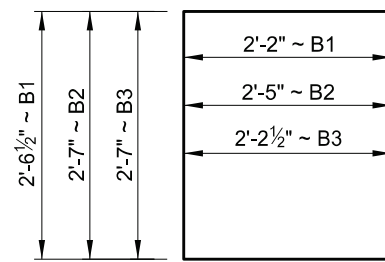
STATE	PROJECT NO.	SECTION NO.	SHEET NO.
ND	SS-8-018(106)064	170	17

NOTES:

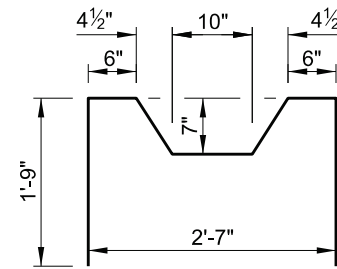
Select the final prestress force (remaining after all losses have been accounted for) and its corresponding center of gravity from those on a curve determined by the three values shown in the "Prestressing Data" table.

Provide holes and inserts in the beams at locations shown to accommodate the diaphragm bars.

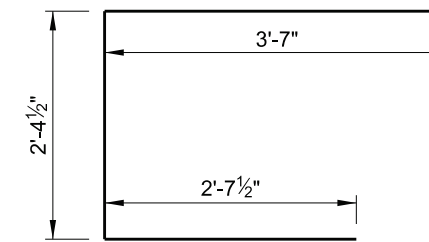
Minor changes to the shape of the beam and to reinforcing steel may be made to accommodate the forms of various contractors and their construction methods with the approval of the Engineer.



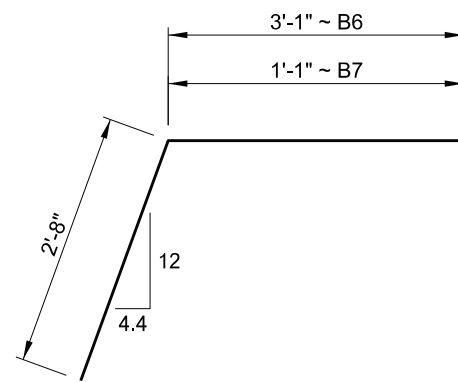
B1, B2 & B3



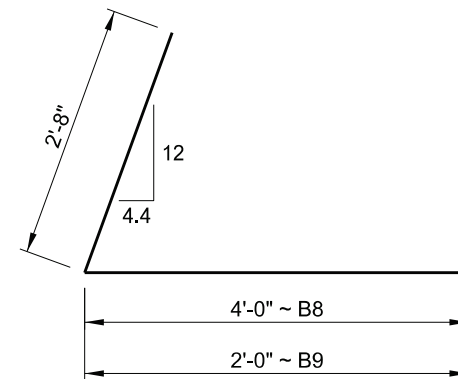
B4



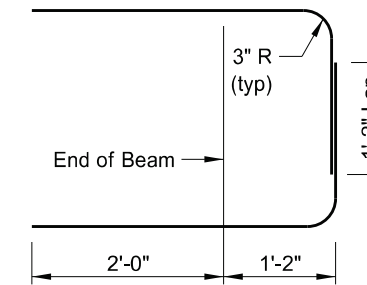
B5



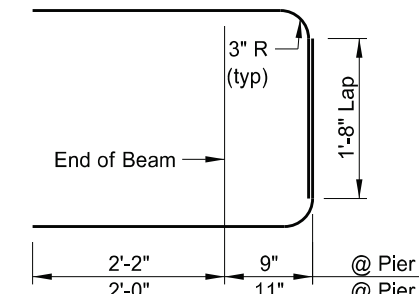
B6 & B7



B8 & B9



(AT ABUTMENTS)

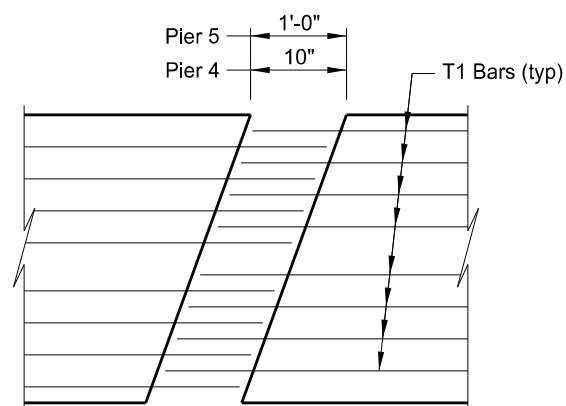


(AT PIERS)

T1

(DIMENSIONS SHOWN ARE OUT TO OUT)

BENT BAR DETAILS



BEAM END PLAN AT PIER



PRESTRESSING DATA					
C.G.	FINAL FORCE	DETENSION STRENGTH	ACCEPTANCE STRENGTH	WEIGHT (TONS)	BEAM LENGTH
2.75"	677.0 k	5.5 psi (Min)	5.5 psi (Min)	21.1	65'-10"
2.94"	683.2 k				
3.25"	693.5 k				
2.75"	399.5 k	5.5 psi (Min)	5.5 psi (Min)	17.5	52'-3"
2.94"	403.1 k				
3.25"	409.2 k				

MAPLE RIVER	
PRE-TENSIONED 33" X 36" PRESTRESSED SPREAD BOX BEAM	
DRAWING NO.	18-064.955-17