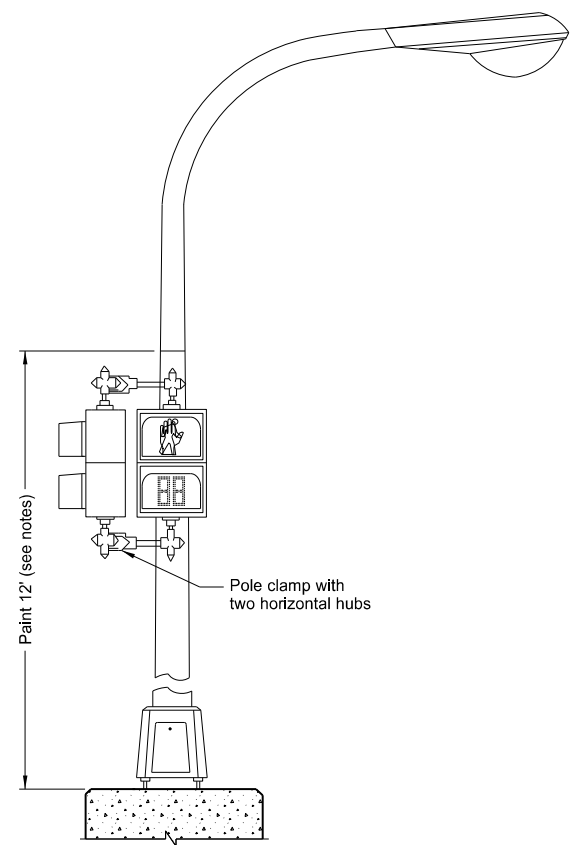
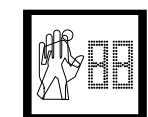


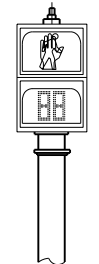
TRAFFIC SIGNAL HEAD MOUNTING



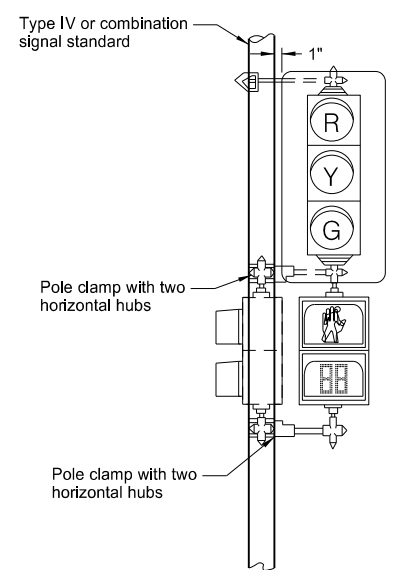
Light Standard Mounted Pedestrian Signal Head (A)



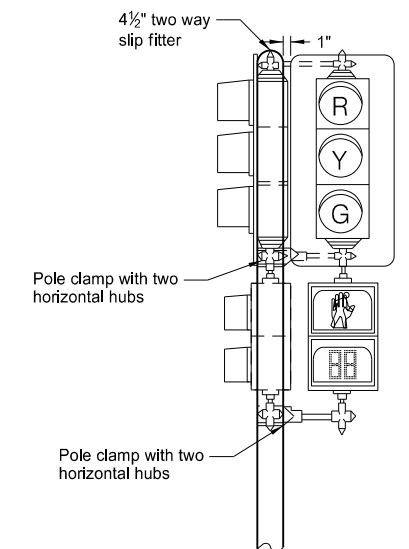
Pedestrian countdown timer
(A) See plans for the appropriate orientation and type of pedestrian signal head to use.



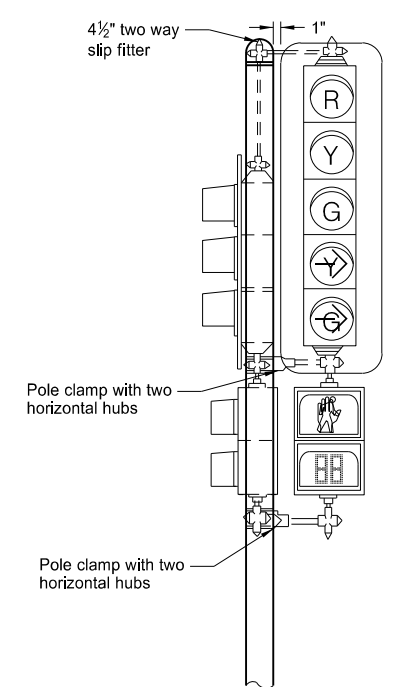
Type II
Pedestal Mounted - Pedestrian (A)



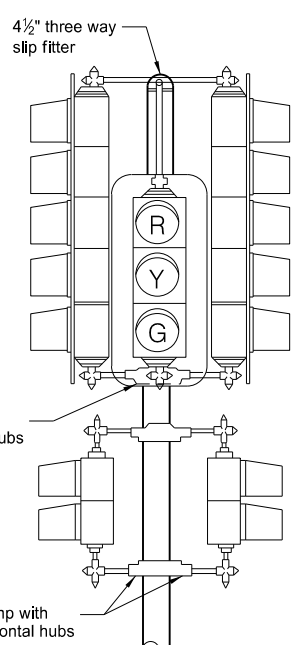
Type IV
Post Mounted - Vehicular
Post Mounted - Pedestrian (A)



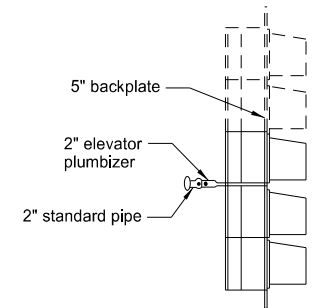
Type V
Post Mounted - Vehicular
Post Mounted - Pedestrian (A)



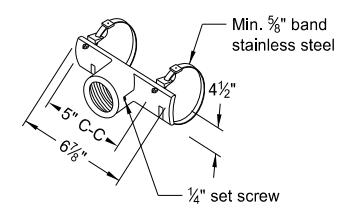
Type VI
Post Mounted - Vehicular
Post Mounted - Pedestrian (A)



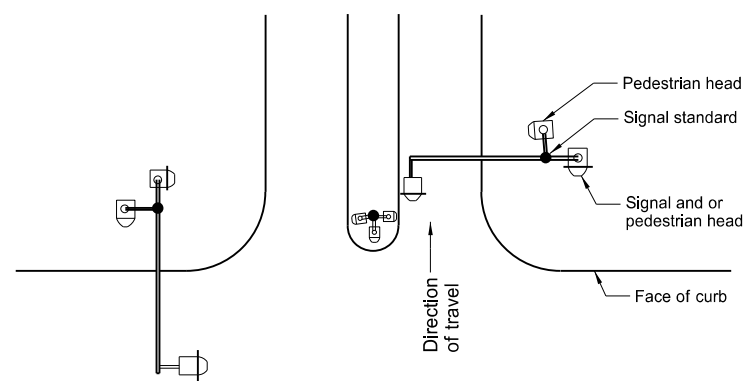
Type VII
Post Mounted - Vehicular
Post Mounted - Pedestrian (A)



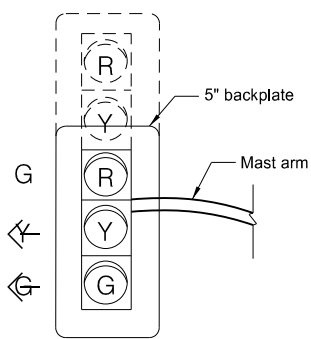
Side View
Mid-Span Mounted and Mast Arm Rigid Mounted Signal Heads



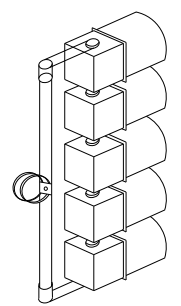
Mast Arm Signal Head Bracket



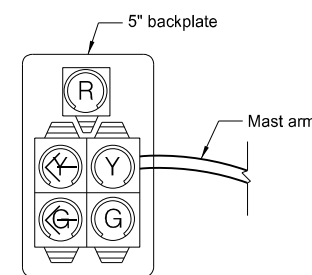
Note: Place signal heads behind the face of the curb.



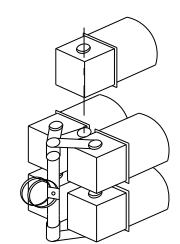
Front View



Isometric View



Front View



Isometric View

End Mounted and Mast Arm Rigid Mounted Signal Heads

Notes:

- Reinforcing Plates:** Install reinforcing plates where mounting hardware attaches to signal heads when using polycarbonate signal heads. Where a plumbizer is used, place reinforcing plates on each side of the plumbizer.
- Clearance:** Place the bottom of post or pedestal mounted vehicular signal heads a minimum of 10 ft. and pedestrian signal heads a minimum of 8 ft. above the ground line or sidewalk.
- Signal Heads:** See traffic signal layout for correct mounting position, numbers, size, and arrangement of lenses.
- Pole Clamps:** A pole plate with suitable banding material, as approved by the Engineer, is allowed in place of pole clamps. Where traffic signal heads and pedestrian signal heads are mounted one above the other, one pole clamp assembly is allowed.
- Paint:** Paint signal housing yellow and backplates dull black. Paint pole clamps and signal head mounting hardware the same color as the signal standard shaft.
- When pedestrian heads are light standard mounted, paint the lower 12 ft. the same color as the other traffic signal standards.
- Mounting Details:** All signal heads shown viewed from direction of travel.

NORTH DAKOTA DEPARTMENT OF TRANSPORTATION	
11-14-13	
REVISIONS	
DATE	CHANGE
7-8-14	Added reinforcing plate note
10-17-17	Updated to active voice.
8-28-19	New Design Engineer PE Stamp.

This document was originally issued and sealed by
Kirk J Hoff,
Registration Number
PE-4683,
on 8/28/19 and the original document is stored at the North Dakota Department of Transportation