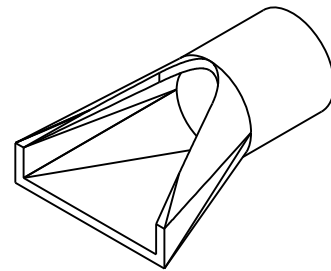
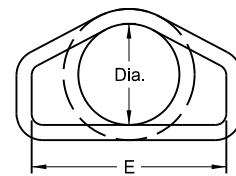


REINFORCED CONCRETE PIPE CULVERTS AND END SECTIONS
(Round Pipe)

FLARED END SECTION						
TERMINAL DIMENSIONS						
DIA	A	B	C	D	E	U
12	0'-4"	2'-0"	4'-0 ⁷ / ₈ "	6'-0 ⁷ / ₈ "	2'-0"	2"
15	0'-6"	2'-3"	3'-10"	6'-1"	2'-6"	2 ¹ / ₄ "
18	0'-9"	2'-3"	3'-10"	6'-1"	3'-0"	2 ¹ / ₂ "
21	0'-9"	3'-0"	3'-1"	6'-1"	3'-6"	2 ¹ / ₂ "
24	0'-9 ¹ / ₂ "	3'-7 ¹ / ₂ "	2'-6"	6'-1 ¹ / ₂ "	4'-0"	3"
27	0'-10 ¹ / ₂ "	4'-0"	2'-1 ¹ / ₂ "	6'-1 ¹ / ₂ "	4'-6"	3 ¹ / ₂ "
30	1'-0"	4'-6"	1'-7 ¹ / ₄ "	6'-1 ³ / ₄ "	5'-0"	3 ¹ / ₂ "
36	1'-3"	5'-3"	2'-9"	8'-0"	6'-0"	4"
42	1'-9"	5'-3"	2'-9"	8'-0"	6'-6"	4 ¹ / ₂ "
48	2'-0"	6'-0"	2'-0"	8'-0"	7'-0"	5"
54	2'-3"	5'-5"	2'-9 ¹ / ₄ "	8'-2 ¹ / ₄ "	7'-6"	5 ¹ / ₂ "
60	2'-11"	5'-0"	3'-3"	8'-3"	8'-0"	5"
66	2'-6"	6'-0"	2'-3"	8'-3"	8'-6"	5 ¹ / ₂ "
72	3'-0"	6'-6"	1'-9"	8'-3"	9'-0"	6"
78	3'-0"	7'-6"	1'-9"	9'-3"	9'-6"	6 ¹ / ₂ "
84	3'-0"	7'-6 ¹ / ₂ "	1'-9"	9'-3 ¹ / ₂ "	10'-0"	6 ¹ / ₂ "
90	3'-5"	7'-3 ¹ / ₂ "	2'-0"	9'-3 ¹ / ₂ "	11'-0"	6 ¹ / ₂ "

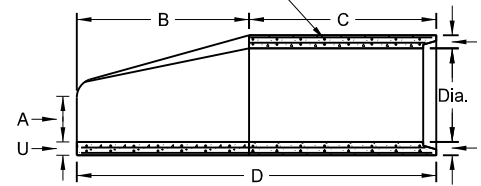


PERSPECTIVE

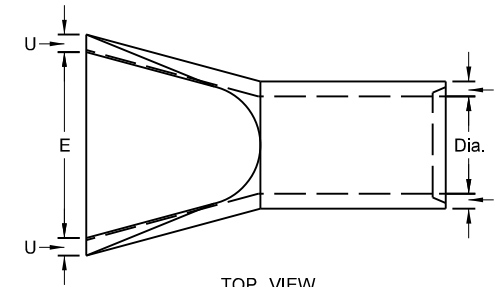


END VIEW

Standard Reinforcement for Class III pipe reinforced as per AASHTO M170



SIDE VIEW



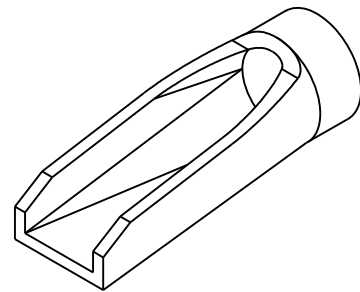
TOP VIEW

NOTES:

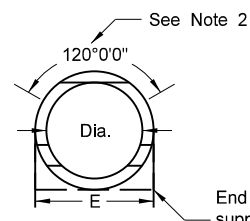
- All reinforcing steel shall meet AASHTO M170 requirements.
- All circular, longitudinal, and elliptical reinforcement shall be assembled and securely fastened in cage fashion so as to maintain reinforcement in exact shape and correct positions within the forms.
- Laying length of pipe: 12" to 66" (incl.) = not less than 4 feet
66" to 108" (incl.) = not less than 6 feet
- Joints shall be sealed with rubber gaskets or with sealer approved by the engineer whenever pipe are specified for storm drain or sanitary sewers.
- For Class IV and Class V reinforced concrete pipe and end section sizes which do not have reinforcement specified by AASHTO M170, shop drawings and design calculations shall be prepared and sealed by a Professional Engineer and submitted for the Engineer's review.

REINFORCED CONCRETE PIPE - FLARED END SECTION
Reinforcement to be equivalent to Class III RCP

TRAVERSABLE END SECTION						
DIA	B	C	D	E	R	S
15"	4'	9"	4'-9"	1'-7 ¹ / ₂ "	3"	6
18"	5'-9"	9"	6'-6"	1'-11"	3"	6
24"	6'	1'	7'	2'-6"	3"	4
30"	7'-6"	1'	8'-6"	3'-1"	3 ¹ / ₂ "	4
36"	7'-3"	15"	8'-6"	3'-8"	3"	4



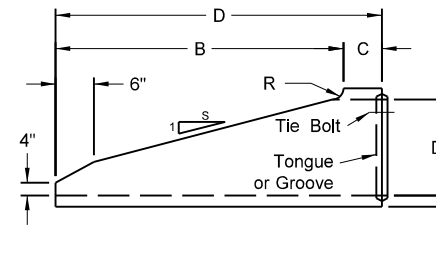
PERSPECTIVE



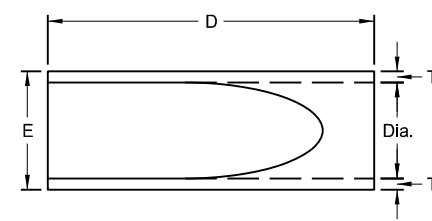
END VIEW

See Note 2
120°0'0"

End may be supplied with flat bottom



SIDE VIEW



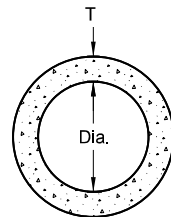
TOP VIEW

NOTES (Traversable End Section):

- Manufactured in accordance with applicable portions of ASTM C76/AASHTO M170.
- Reinforcement per Class III RCP with double reinforcement in the upper 120° of the full barrel portion.

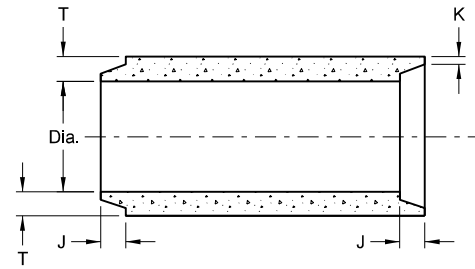
REINFORCED CONCRETE PIPE - TRAVERSABLE END SECTION
Reinforcement to be equivalent to Class III RCP

All Classifications of Round Concrete Pipe						
Internal Dia. of pipe in Inches	Cross-Sectional Water Area	Weight per Lin. Foot of pipe Std. Wall	Joint J Groove End Min./Max.	Joint K Tongue End Min.	Minimum Wall Thickness (T)	
Dia	Sq. ft.	Lbs.	In.	In.	In.	
12	0.79	92	1 ¹ / ₈ -2 ³ / ₈	3/4	2	
15	1.23	127	1 ³ / ₈ -2 ¹ / ₄	7/8	2 ¹ / ₄	
18	1.77	168	1 ⁷ / ₈ -2 ⁷ / ₈	1	2 ¹ / ₂	
21	2.40	214	1 ⁷ / ₈ -3 ¹ / ₈	1 ¹ / ₈	2 ³ / ₄	
24	3.14	265	2 ³ / ₄ -3 ¹ / ₄	1 ¹ / ₂	3	
27	3.98	322	2 ³ / ₄ -4	1 ¹ / ₄	3 ¹ / ₄	
30	4.91	384	3 ¹ / ₄ -4 ¹ / ₄	1 ¹ / ₂	3 ¹ / ₂	
33	5.94	452	3 ¹ / ₄ -4 ¹ / ₄	1 ¹ / ₂	3 ³ / ₄	
36	7.07	524	3 ¹ / ₄ -4 ¹ / ₄	1 ¹ / ₂	4	
42	9.62	685	3 ³ / ₄ -4 ³ / ₄	1 ³ / ₄	4 ¹ / ₂	
48	12.57	885	3 ³ / ₄ -4 ³ / ₄	1 ³ / ₄	5	
54	15.90	1070	4 ¹ / ₈ -5 ¹ / ₄	2	5 ¹ / ₂	
60	19.63	1296	4 ¹ / ₂ -5 ¹ / ₂	2 ¹ / ₄	6	
66	23.76	1542	5-6	2 ³ / ₈	6 ¹ / ₂	
72	28.27	1810	5 ⁵ / ₈ -6 ³ / ₄	2 ³ / ₈	7	
78	33.18	2098	6 ¹ / ₄ -7 ¹ / ₄	2 ³ / ₈	7 ¹ / ₂	
84	38.48	2410	5 ⁵ / ₈ -7 ³ / ₄	3 ³ / ₈	8	
90	44.18	2793	6 ³ / ₄ -8 ¹ / ₂	3 ³ / ₈	8 ¹ / ₂	
96	50.27	3092	7-8 ¹ / ₄	3 ¹ / ₂	9	
102	56.75	3466	7-8 ¹ / ₄	3 ¹ / ₂	9 ¹ / ₂	
108	63.62	3864	7 ¹ / ₄ -8 ¹ / ₂	3 ³ / ₄	10	

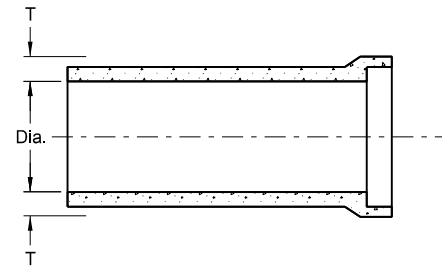


END VIEW

CIRCULAR PIPE

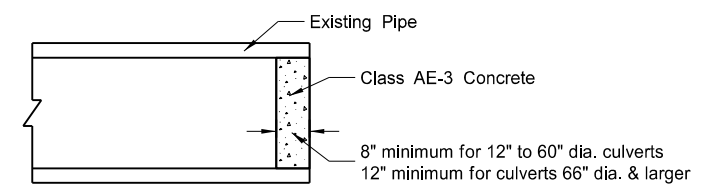


TONGUE & GROOVE JOINT



BELL & SPIGOT JOINT

JOINTS FOR REINFORCED CONCRETE PIPE



CONCRETE PIPE PLUG

SEE STANDARD DRAWING D-714-22 FOR DETAILS OF CONCRETE PIPE TIES (TIE BOLTS).

NORTH DAKOTA DEPARTMENT OF TRANSPORTATION	
05-12-14	
REVISIONS	
DATE	CHANGE
01-21-15	Revised Note 5
11-21-16	Revised End Section Dimensions
09-18-19	Updated Perspective View Details

This document was originally issued and sealed by
Jon Ketterling
Registration Number
PE-4684,
on **9/18/19** and the original document is stored at the
North Dakota Department
of Transportation