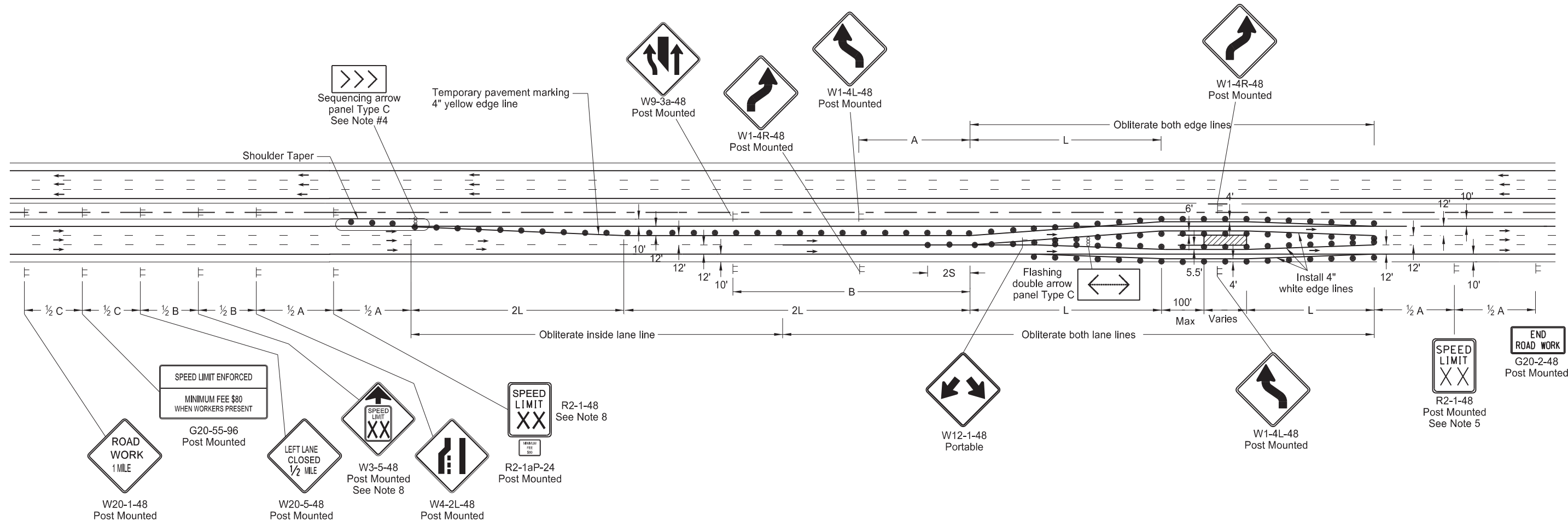
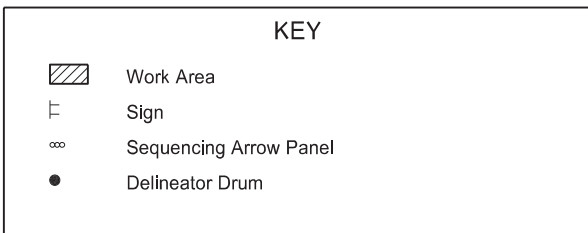


INTERIOR LANE CLOSURE ON 6 LANE INTERSTATE

D-704-60



- Notes:
1. Install a ramp speed limit sign when the work area encompasses a ramp. Remove the ramp speed limit sign when the main line speed zone moves past the ramp.
 2. Variables:
 S = Numerical value of speed limit or 85th percentile.
 W = The width of taper.
 L = Minimum length of taper, $S \times W$ for freeways, expressways, and all other roads with speeds of 45 mph or greater, or $W \times S^2 / 60$ for urban, residential, and other streets with speeds of 40 mph or less.
 3. Space delineator drums and tubular markers at dimension "S" for tapering traffic. Space tubular markers for tangents 2 times dimension "S".
 4. Sequencing and Flashing Arrow Panels:
 Place panels at the beginning of the taper when possible. Where shoulder width does not provide sufficient room, move the panel closer to the work area so it is placed on the roadway surface. See shoulder closure standard drawing.
 5. Re-establish speed limit. Determine exact speed limit in the field, dependent on location and conditions.
 6. Cover existing speed limit signs within a reduced speed zone.
 7. Determine the reduced speed based on the in place speed limit before construction. Where speed reductions exceed 30 mph, install a second speed limit sign with the desired speed reduction (not to exceed 30 mph.) Place the second speed limit sign at $\frac{1}{2} B$.
 8. As an option, use portable sign supports in lieu of post mounted signs in accordance with NDDOT Standard Drawing D-704-14.
 9. Recommend using 40 mph speed limit in vicinity of workers, unless location and conditions dictate otherwise.
 10. Sign G20-55-96 is not required if this layout is part of other traffic control that contains this sign.



Longitudinal Buffer Space	
*Speed (mph)	Length Min (feet)
20	115
25	155
30	200
35	250
40	305
45	360
50	425
55	495
60	570
65	645
70	730
75	820

* Posted speed, off-peak 85th percentile speed prior to work starting, or the anticipated operating speed in mph

ADVANCE WARNING SIGN SPACING			
Road Type	Distance Between Signs Min. (ft)		
	A	B	C
Urban - Low Speed (30 mph or less)	150	150	150
Urban - Low Speed (over 30 to 40 mph)	280	280	280
Urban - High Speed (over 40 mph to 50 mph)	360	360	360
Rural - High Speed (over 50 mph to 65 mph)	720	720	720
Urban Expressway and Freeway (55 mph to 60 mph)	850	1350	2200
Rural Expressway and Freeway (70 mph to 75 mph)	1000	1500	2640
Interstate/4-Lane Divided (Maintenance and Surveying)	750	1000	1500

NORTH DAKOTA DEPARTMENT OF TRANSPORTATION	
11-15-12	
REVISIONS	
DATE	CHANGE
08-17-17	Updated notes & sign numbers
11-01-19	Added shldr taper, revised note 8
12-08-21	Switched order of Road Work 1 Mile and Spd Limit Enforced & added Dollars At Work
11-29-22	Removed Dollars At Work



11/29/22