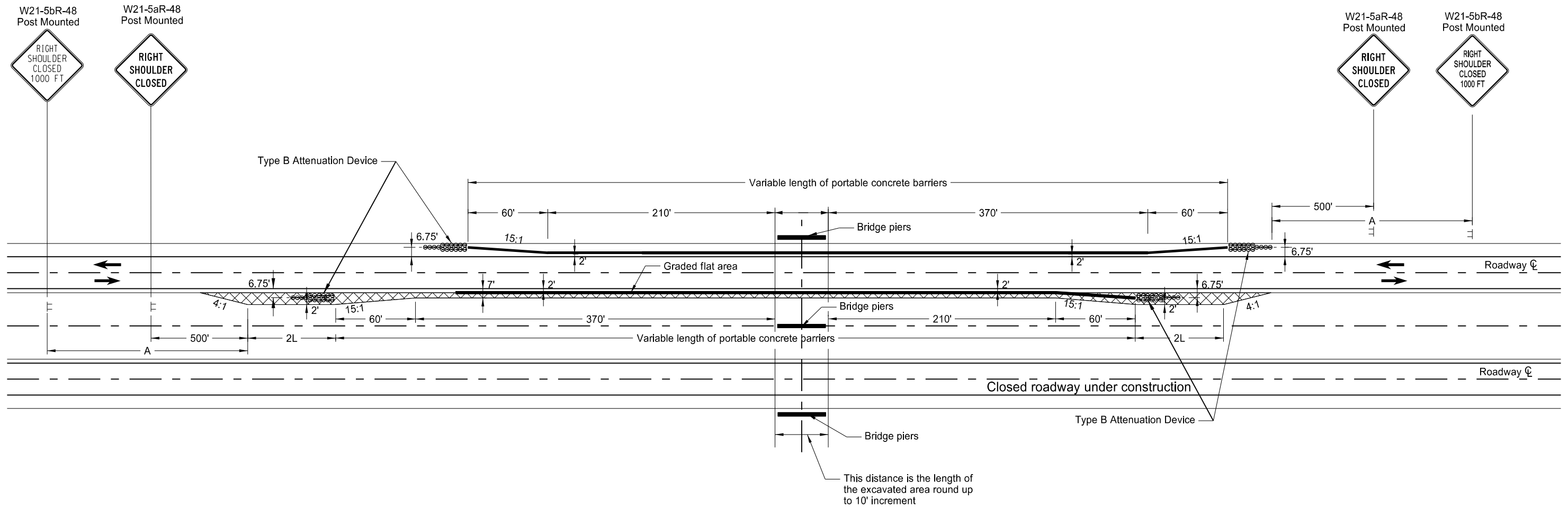


# Two-way, Two-lane Operation on Divided Highway for Overhead Structure, Pier, and Footing Replacement

D-704-59



KEY	
	Sign
	Embankment
	Type B Attenuation Device
	Precast Concrete Median Barrier

- NOTES:
- The layout is used when a bridge structure is being constructed.
  - The location is within a project and the necessary traffic control is in place.
- L= Length of attenuation device

ADVANCE WARNING SIGN SPACING			
Road Type	Distance Between Signs Min. (ft)		
	A	B	C
Urban - Low Speed (30 mph or less)	150	150	150
Urban - Low Speed (over 30 to 40 mph)	280	280	280
Urban - High Speed (over 40 mph to 50 mph)	360	360	360
Rural - High Speed (over 50 mph to 65 mph)	720	720	720
Urban Expressway and Freeway (55 mph to 60 mph)	850	1350	2200
Rural Expressway and Freeway (70 mph to 75 mph)	1000	1500	2640
Interstate/4-Lane Divided (Maintenance and Surveying)	750	1000	1500

NORTH DAKOTA DEPARTMENT OF TRANSPORTATION	
9-18-15	
REVISIONS	
DATE	CHANGE
9-18-15	Revised Standard Description
11-01-19	Atten Device, hatching, & sign #s

This document was originally issued and sealed by  
 Kirk J Hoff,  
 Registration Number  
 PE- 4683,  
 on 11/1/19 and the original document is stored at the  
 North Dakota Department  
 of Transportation