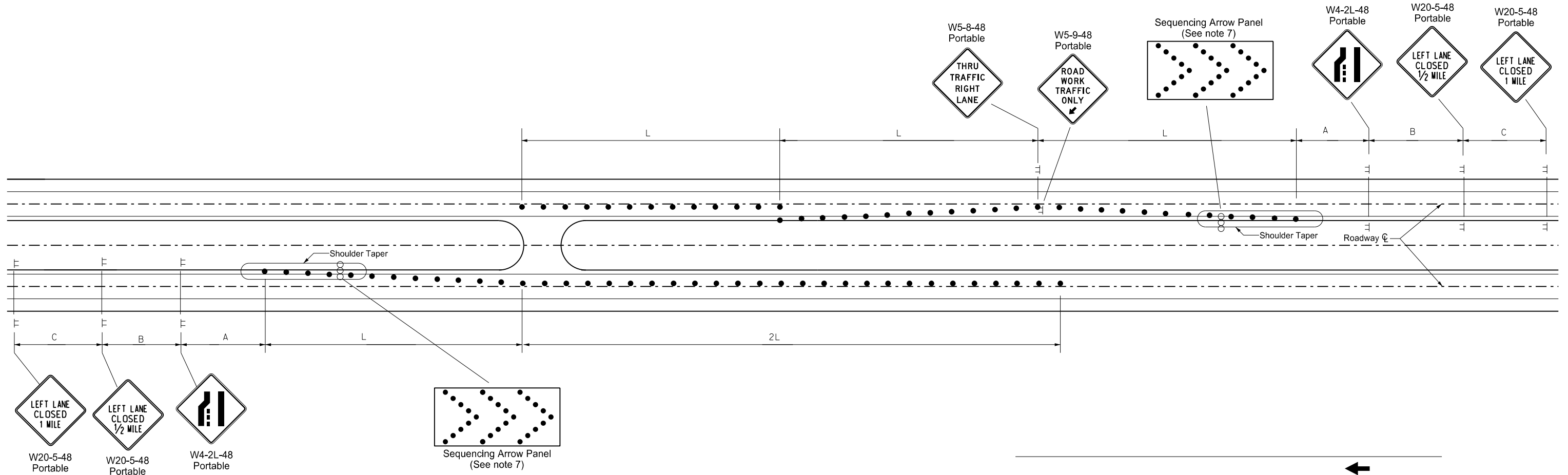
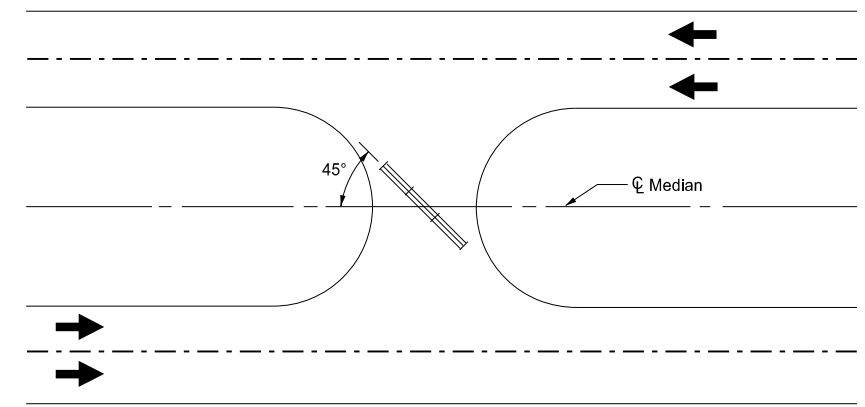


CONSTRUCTION SIGN AND BARRICADE LOCATION DETAILS CONSTRUCTION TRAFFIC MEDIAN CROSSING

D-704-49



- Notes:**
1. Include all costs for construction signing and devices in other items.
 2. Remove construction signs and channelizing devices daily and barricade median access during nonworking hours.
 3. Provide a minimum distance of one mile between the work area and the crossover. Use interchange access when the distance between work area and interchange is less than two miles.
 4. Do not allow construction traffic to decelerate until they are well into crossover lane.
 5. Variables:
 S = Numerical value of speed limit or 85th percentile.
 W = The width of taper
 L = Minimum length of taper, or $S \times W$ for freeways, expressways, and all other roads with speeds of 45 mph or greater, or $W \times S \times S / 60$ for urban, residential, and other streets with speed of 40 mph or less
 6. Space delineator drums, barricades or cones used for tapering traffic at dimension "S".
 7. Sequencing Arrow Panels:
 Place sequencing arrow panels at the beginning of the taper when possible. Where shoulder width does not provide sufficient room, move the panel closer to the work area and place on the roadway surface.
 Use Type A on roadways with slow moving traffic speeds and low volume (25 mph or less and 750 ADT or less).
 Use Type B on roadways with moderate traffic speeds and volumes (40 mph or less and 5000 ADT or less).
 Use Type C on roadways with high traffic speeds and volumes (over 40 mph and over 5000 ADT).



BARRICADE LOCATION DETAIL

Install barricades at 45 degrees away from approaching traffic when median access is not in use.

ADVANCE WARNING SIGN SPACING			
Road Type	Distance Between Signs Min. (ft)		
	A	B	C
Urban - Low Speed (30 mph or less)	150	150	150
Urban - Low Speed (over 30 to 40 mph)	280	280	280
Urban - High Speed (over 40 mph to 50 mph)	360	360	360
Rural - High Speed (over 50 mph to 65 mph)	720	720	720
Urban Expressway and Freeway (55 mph to 60 mph)	850	1350	2200
Rural Expressway and Freeway (70 mph to 75 mph)	1000	1500	2640
Interstate/4-Lane Divided (Maintenance and Surveying)	750	1000	1500

KEY	
	Sign
	Delineator Drum
	Sequencing Arrow Panel
	Type III Barricade

NORTH DAKOTA DEPARTMENT OF TRANSPORTATION	
11-19-12	
REVISIONS	
DATE	CHANGE
06-24-14	Changed W5-9-48 to portable mounted.
09-06-19	Update Notes to active voice & New Design Engr PE Stamp.
11-01-19	Identified Shoulder Taper.

This document was originally issued and sealed by
 Kirk J Hoff,
 Registration Number
 PE-4683,
 on 11/1/19 and the original document is stored at the
 North Dakota Department
 of Transportation