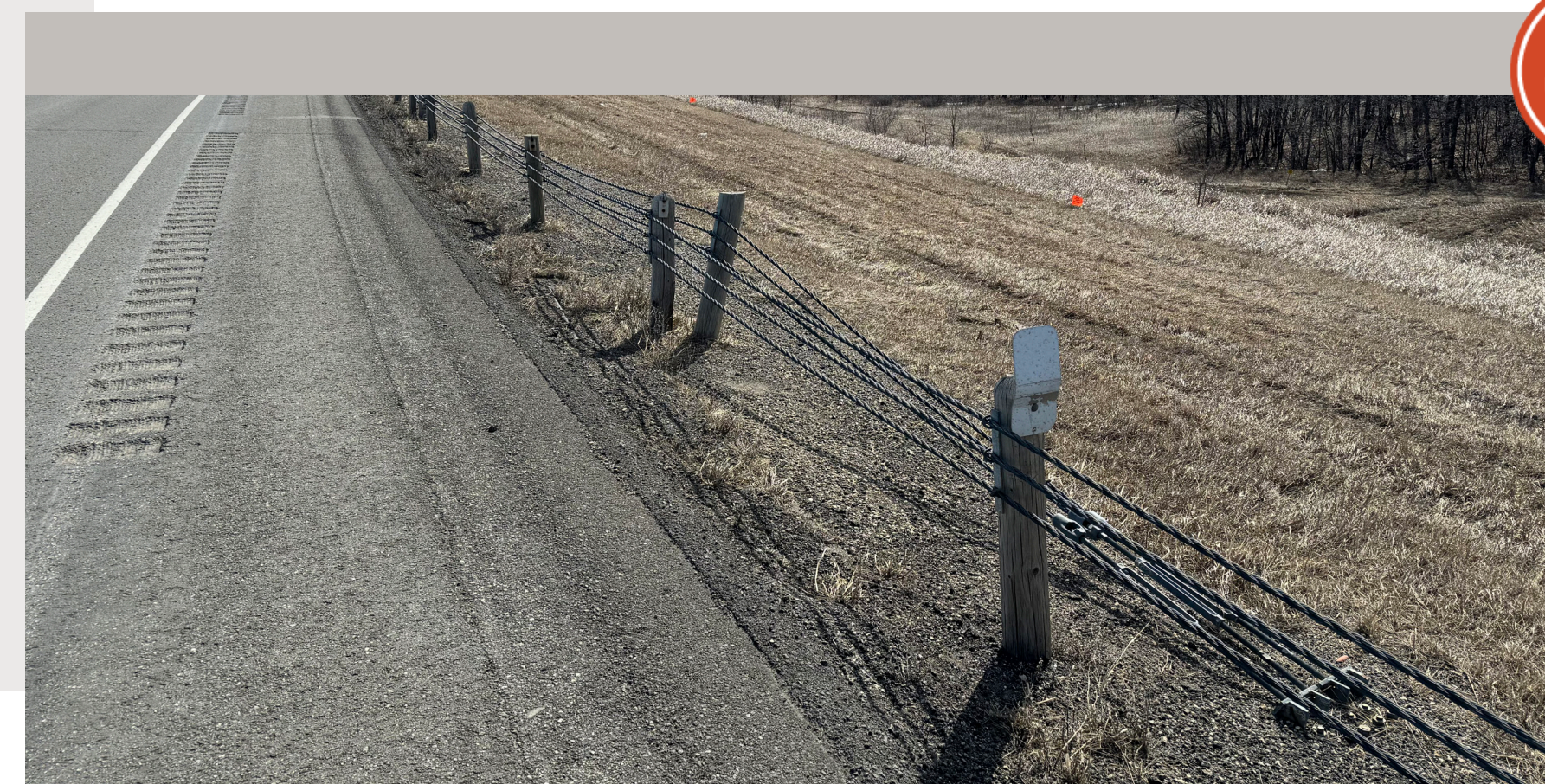


WHY ARE IMPROVEMENTS NEEDED?

Hwy 5 Structures

- Correct structural deficiencies
- End of usable life
- Address maintenance issues



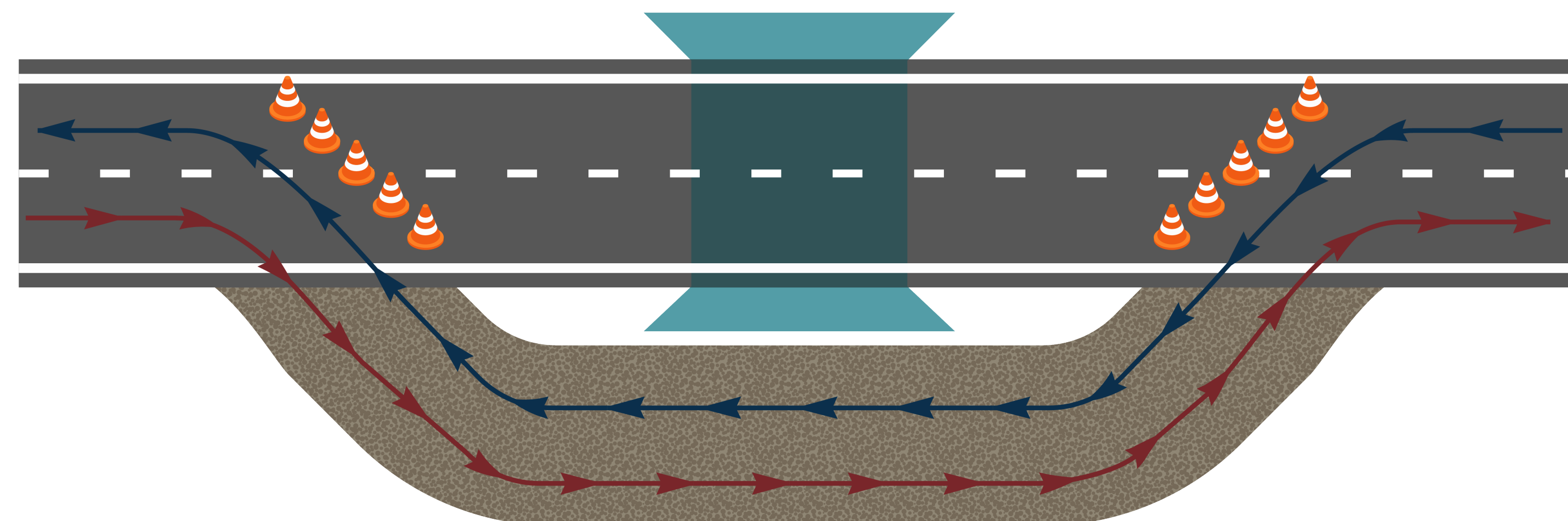
RP 297.70 to 298.45



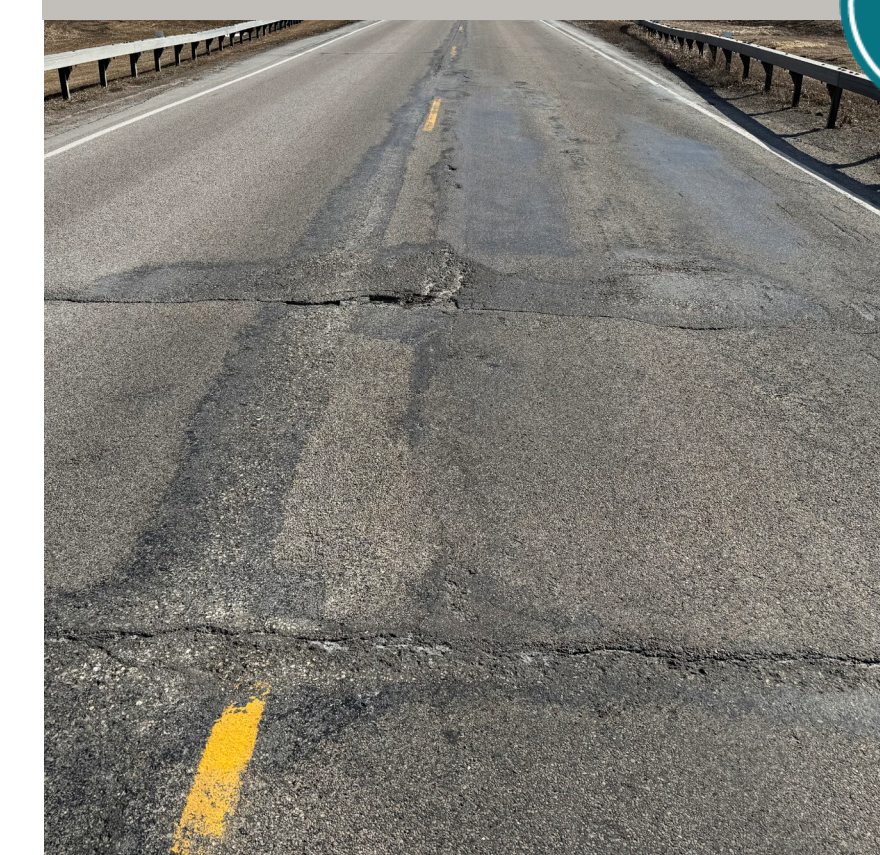
RP 305.341



TEMPORARY BYPASS



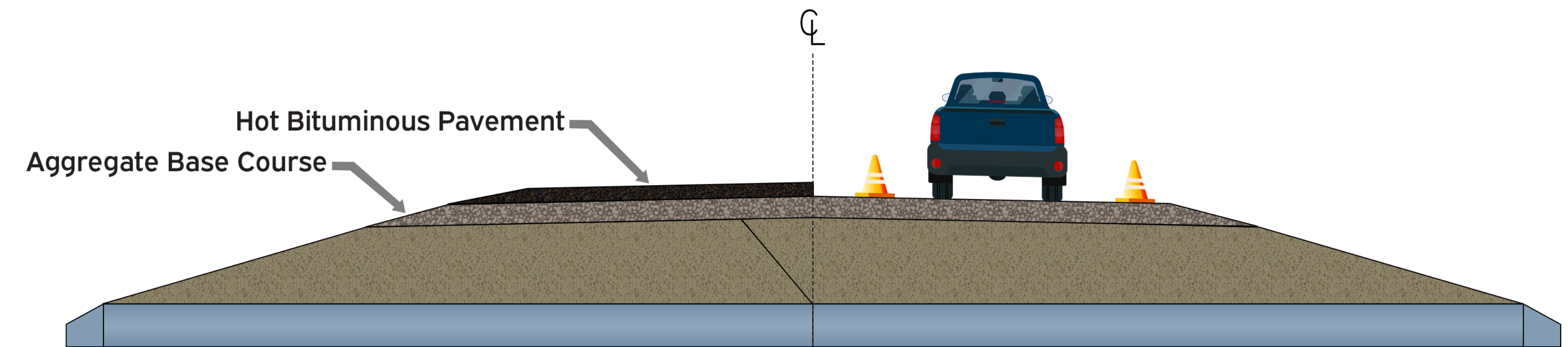
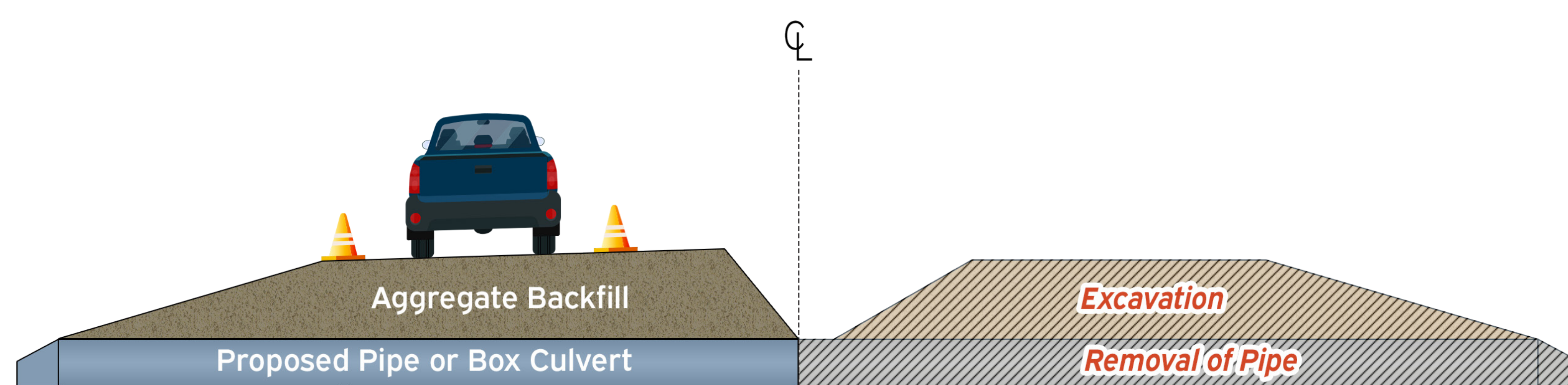
RP 303.364



RP 313.750



RP 314.446



CONSTRUCTION PHASING — HALF AT A TIME