

June 18, 2024

ADDENDUM 2 – JOB 24345

TO: All prospective bidders on Projects IM-5-094(171)064, Job No. 24345 scheduled for the June 21, 2024 bid opening.

The following revision(s) shall be made:

Plan Revisions:

See attached summary from Kirk J. Hoff, P.E. dated June 17, 2024 for an explanation.

Request for Proposal Revisions:

- Remove and replace pages 5 thru 6 of 8 of the Proposal pages located at the beginning of the Request for Proposal with pages revised June 17, 2024.
- Bid Item Changes are summarized in the Plan Addendum Summary and Approval.

This addendum is to be incorporated into the bidder's proposal for this project. AASHTOWare Project Bids files should be updated by downloading the addendum file from the Bid Express on-line bidding exchange at <http://www.bidx.com/> and load it into the AASHTOWare Project Bids program.



PHILLIP MURDOFF, P.E. – CONSTRUCTION SERVICES ENGINEER

80: jwj

Enclosure

PLAN ADDENDUM SUMMARY AND APPROVAL

PROJECT INFORMATION			
Project:	IM-5-029(171)064	PCN:	24345
Location:	Stark Co; I-94, Jct Bus 94 (East Dickinson Interchange) – Dickinson		
Date:	6/17/2024	Lead Designer:	Dustin Wing
Bid Opening Date:	06/21/2024	JOB#:	24345
		Addendum#:	2

PLAN SHEET CHANGES		
Section	Sheet	Description
2	1	Removed Standard D-704-12 and added Standard D-704-24.
6	1	Added Note 704-510 for obliteration of pavement Marking and revised Note 704-P02 for shoulder closures to call out D-704-24 Type HH instead of D-704-12.
8	1	Updated quantity sheet to changes listed below.
100	1	Revised quantities for shoulder closures using D-704-24 Type HH instead of D-704-12 for Main Line traffic.
100	3	Revised reference to Standard D-704-12 for shoulder closure to be D-704-24.
Standards	704-12 and 704-24	Added standard D-704-24 and removed standard D-704-12

CHANGES MADE TO BID ITEMS FOR JOB					
Spec	Code	Description	Unit	Previous Quantity	Revised Quantity
704	1000	Traffic Control Signs	Unit	1,951	2,895
704	1087	Sequencing Arrow Panel – Type C	Ea	2	0

APPROVAL

Should the revisions described above be processed as a plan addendum?

X Yes _____ No



 Kirk J Hoff, P.E. – Design Engineer

6/17/2024

 Date

BID ITEMS

Project: IM-5-094(171)064 (PCN-24345)

Bidder must type or neatly print unit prices in numerals, make extensions for each item, and total. Do not carry unit prices further than three (3) decimal places.

Item No.	Spec No.	Code No.	Description	Unit	Approx. Quantity	Unit Price		Amount	
						\$\$\$\$	000	\$\$\$\$	00
001	103	0100	CONTRACT BOND	L SUM	1.				
002	202	0119	SAW CONCRETE	LF	9.				
003	210	0099	CLASS 1 EXCAVATION	L SUM	1.				
004	702	0100	MOBILIZATION	L SUM	1.				
005	704	0100	FLAGGING	MHR	100.				
006	704	1000	TRAFFIC CONTROL SIGNS	UNIT	2,895.				
007	704	1018	LANE CLOSURE-SIGNAL CONTROL/FLAGGING CONTROL	EA	1.				
008	704	1052	TYPE III BARRICADE	EA	2.				
009	704	1060	DELINEATOR DRUMS	EA	49.				
010	704	1500	OBLITERATION OF PAVEMENT MARKING	SF	1,200.				
011	762	0114	EPOXY PVMT MK 6IN LINE	LF	3,600.				
012	762	0420	SHORT TERM 4IN LINE-TYPE R	LF	2,860.				
013	762	0426	SHORT TERM 24IN LINE-TYPE R	LF	48.				
014	930	8230	SHORING	EA	4.				
015	930	9505	BRIDGE REPAIR-BEARING	L SUM	1.				
016	930	9660	ABUTMENT REPAIR	L SUM	1.				

BID ITEMS

Project: IM-5-094(171)064 (PCN-24345)

Bidder must type or neatly print unit prices in numerals, make extensions for each item, and total. Do not carry unit prices further than three (3) decimal places.

Item No.	Spec No.	Code No.	Description	Unit	Approx. Quantity	Unit Price		Amount	
						\$\$\$\$	000	\$\$\$\$	00
017	970	0006	LANDSCAPE PREPARATION	L SUM	1.				
			TOTAL SUM BID						

TABLE OF CONTENTS

Revised 6/17/2024	STATE	PROJECT NO.	SECTION NO.	SHEET NO.
	ND	IM-5-094(171)064	2	1

PLAN SECTIONS

LIST OF STANDARD DRAWINGS

Section	Page(s)	Description
1	1	Title Sheet
2	1	Table of Contents
6	1	Notes
8	1	Quantities
10	1	Basis of Estimate
100	1 - 7	Work Zone Traffic Control
170	1 - 4	Bridges and Box Culverts

Number	Description
D-101-1, 2,3,4,10	NDDOT Abbreviations
D-101-20, 21	Line Styles
D-101-30, 31,32,33	Symbols
D-255-2	Erosion And Siltation Control - Erosion Control Blanket Installation
D-704-7	Breakaway Systems For Construction Zone Signs - Perforated Tube
D-704-8	Breakaway Systems For Construction Zone Signs - U-Channel Post
D-704-9	Construction Sign Details - Terminal And Guide Signs
D-704-10	Construction Sign Details - Regulatory Signs
D-704-11, 11A	Construction Sign Details - Warning Signs
D-704-13	Barricade And Channelizing Device Details
D-704-14	Construction Sign Punching And Mounting Details
D-704-15	Road Closure Layouts
D-704-16	Lane Closure On A Two Lane Road Using Traffic Control Signals
D-704-20	Terminal And Seal Coat Sign Layouts
D-704-24	Shoulder Closures And Bridge Painting Layouts
D-704-27	Mobile Operation (Pavement Marking)
D-704-50	Portable Sign Support Assembly
D-762-2	Interstate Pavement Marking 4 Lane Divided Highway
D-762-4	Pavement Marking
D-762-11	Short-Term Pavement Marking

SPECIAL PROVISIONS

Number	Description
SSP 2	Federal Migratory Bird Treaty Act

Revised 6/17/24	STATE	PROJECT NO.	SECTION NO.	SHEET NO.
	ND	IM-5-094(171)064	6	1

704-510 OBLITERATION OF PAVEMENT MARKINGS: Masking of pavement markings designated for obliteration is allowed. Choose to remove marking as specified in Section 704.04 N, "Obliteration of Pavement Markings" or mask markings. Mask markings using removable, non-reflective preformed tape that is approximately the same color as the pavement surface and that overlaps the marking a minimum of 1 inch on each side.

704-P01 LANE CLOSURE - SIGNAL CONTROL/FLAGGING CONTROL: Install the signal controlled lane closure on Standard D-704-16.

Obtain an electrical source for traffic signals. Solar powered signals may be used. Place generators a minimum of 60 feet from the roadway centerline, unless the generator and signal are part of a trailer mounted unit.

Place utility poles and equipment a minimum of 60 feet from the roadway centerline and place power conductors a minimum of 6 inches below the ground surface. Remove poles after they are no longer necessary.

Provide cameras and a video detection system.

The Engineer will measure individual traffic control devices, other than the signal system shown on the standard. Payment will be made at the respective contract unit price.

Include the cost of the traffic signal system in the contract unit price for "Lane Closure - Signal Control/Flagging Control".

704-P02 TRAFFIC CONTROL: Traffic control quantities are based on using two outside shoulder closures on I-94 (WB and EB) and a signalized one lane closure for phase 1 and phase 2 on the crossroad and ramps using layouts and the following Standard Drawings:

- D-704-24, For shoulder closure on the Mainline beneath bridge.
- D-704-15, For flagging operations.
- D-704-16, For traffic control at ramps and cross road bridge.
- D-704-20, For Construction Sign Layouts.
- D-704-27, For pavement marking mobile operation.



Note Sheet

Pedestal Repair Work

I-94 Exit 64 Interchange Bridge

ESTIMATE OF QUANTITIES

STATE	PROJECT NO.	SECTION NO.	SHEET NO.
ND	IM-5-094(171)064	8	1

REVISED 06/17/2024

SPEC CODE	ITEM DESCRIPTION	UNIT	MAINLINE	TOTAL
-----	-----	-----	-----	-----
103	0100 CONTRACT BOND	L SUM	1	1
202	0119 SAW CONCRETE	LF	9	9
210	0099 CLASS 1 EXCAVATION	L SUM	1	1
702	0100 MOBILIZATION	L SUM	1	1
704	0100 FLAGGING	MHR	100	100
704	1000 TRAFFIC CONTROL SIGNS	UNIT	2,895	2,895
704	1018 LANE CLOSURE-SIGNAL CONTROL/FLAGGING CONTROL	EA	1	1
704	1052 TYPE III BARRICADE	EA	2	2
704	1060 DELINEATOR DRUMS	EA	49	49
704	1500 OBLITERATION OF PAVEMENT MARKING	SF	1,200	1,200
762	0114 EPOXY PVMT MK 6IN LINE	LF	3,600	3,600
762	0420 SHORT TERM 4IN LINE-TYPE R	LF	2,860	2,860
762	0426 SHORT TERM 24IN LINE-TYPE R	LF	48	48
930	8230 SHORING	EA	4	4
930	9505 BRIDGE REPAIR-BEARING	L SUM	1	1
930	9660 ABUTMENT REPAIR	L SUM	1	1
970	0006 LANDSCAPE PREPARATION	L SUM	1	1

Revised 6/17/2024

STATE	PROJECT NO.	SECTION NO.	SHEET NO.
ND	IM-5-094(171)064	100	1

SIGN NUMBER	SIGN SIZE	DESCRIPTION	AMOUNT REQUIRED			TOTAL AMOUNT REQUIRED	UNITS PER AMOUNT	UNITS SUB TOTAL
			BY PHASE NO.					
			1	2	All			
E5-1-48	48"x48"	EXIT GORE					35	
G20-1-60	60"x24"	ROAD WORK NEXT ___ MILES			2	2	28	56
G20-1b-60	60"x24"	NO WORK IN PROGRESS (Sign and installation only)					18	
G20-2-48	48"x24"	END ROAD WORK	8	8	8	8	26	208
G20-4-36	36"x18"	PILOT CAR FOLLOW ME (Mounted to back of pilot car)					18	
G20-4b-36	36"x30"	WAIT FOR PILOT CAR					18	
G20-50a-72	72"x36"	ROAD WORK NEXT ___ MILES RT & LT ARROWS			2	2	43	86
G20-52a-72	72"x24"	ROAD WORK NEXT ___ MILES RT or LT ARROW					36	
G20-55-96	96"x48"	SPEED LIMIT ENFORCED - MINIMUM FEE \$80 WHEN WORKERS PRESENT	2	2	2	2	59	118
M1-1-36	36"x36"	INTERSTATE ROUTE MARKER (Post and installation only)					11	
M1-4-24	24"x24"	U.S. ROUTE MARKER (Post and installation only)					10	
M1-5-24	24"x24"	STATE ROUTE MARKER (Post and installation only)					10	
M3-1-24	24"x12"	NORTH (Mounted on route marker post)					7	
M3-2-24	24"x12"	EAST (Mounted on route marker post)					7	
M3-3-24	24"x12"	SOUTH (Mounted on route marker post)					7	
M3-4-24	24"x12"	WEST (Mounted on route marker post)					7	
M4-8-24	24"x12"	DETOUR (Mounted on route marker post)					7	
M4-9-30	30"x24"	DETOUR ARROW RIGHT or LEFT/AHD AND RT or LT					15	
M4-10-48	48"x18"	DETOUR (INSIDE ARROW) RIGHT or LEFT (Mounted on barricade)					7	
M5-1-21	21"x15"	ADVANCE TURN ARROW RT or LT (Mounted on route marker post)					7	
M5-1-30	30"x21"	ADVANCE TURN ARROW RT or LT (Mounted on route marker post)					9	
M6-1-21	21"x15"	DIRECTIONAL ARROW RT or LT (Mounted on route marker post)					7	
M6-1-30	30"x21"	DIRECTIONAL ARROW RT or LT (Mounted on route marker post)					9	
M6-3-21	21"x15"	DIRECTIONAL ARROW UP (Mounted on route marker post)					7	
R1-1-48	48"x48"	STOP					32	
R1-2-60	60"x60"	YIELD					29	
R2-1-36	36"x48"	SPEED LIMIT ___ (Portable only)	12	12	8	12	30	360
R2-1-48	48"x60"	SPEED LIMIT ___	2	2	2	2	39	78
R2-1aP-24	24"x18"	MINIMUM FEE \$80 (Mounted on Speed Limit post)	8	8	6	8	10	80
R3-2-48	48"x48"	NO LEFT TURN					35	
R4-1-48	48"x60"	DO NOT PASS					39	
R4-7-48	48"x60"	KEEP RIGHT					39	
R5-1-48	48"x48"	DO NOT ENTER					35	
R6-1-54	54"x18"	ONE WAY RIGHT or LEFT (Mounted on STOP or DO NOT ENTER post)					14	
R7-1-12	12"x18"	NO PARKING ANY TIME					11	
R10-6-24	24"x36"	STOP HERE ON RED	2	2	2	2	16	32
R11-2-48	48"x30"	ROAD CLOSED (Mounted on barricade)					12	
R11-2a-48	48"x30"	STREET CLOSED (Mounted on barricade)					12	
R11-3a-60	60"x30"	ROAD CLOSED ___ MILES AHEAD LOCAL TRAFFIC ONLY (Mtd on barricade)					15	
R11-3c-60	60"x30"	STREET CLOSED ___ MILES AHEAD LOCAL TRAFFIC ONLY (Mtd on barricade)					15	
R11-4a-60	60"x30"	STREET CLOSED TO THRU TRAFFIC (Mounted on barricade)					15	
W1-3-48	48"x48"	REVERSE TURN RIGHT or LEFT					35	
W1-4-48	48"x48"	REVERSE CURVE RIGHT or LEFT	2	2		2	35	70
W1-4b-48	48"x48"	TWO LANE REVERSE CURVE RIGHT or LEFT					35	
W1-6-48	48"x24"	ONE DIRECTION LARGE ARROW					26	
W3-1-48	48"x48"	STOP AHEAD					35	
W3-3-48	48"x48"	SIGNAL AHEAD	4	4	4	4	35	140
W3-4-48	48"x48"	BE PREPARED TO STOP	2	2		2	35	70
W3-5-48	48"x48"	SPEED REDUCTION AHEAD	8	8	6	8	35	280
W4-2-48	48"x48"	LANE ENDS RIGHT or LEFT					35	
W5-1-48	48"x48"	ROAD NARROWS					35	
W5-8-48	48"x48"	THRU TRAFFIC RIGHT LANE					35	
W5-9-48	48"x48"	ROAD WORK TRAFFIC ONLY DOWN & LT or RT ARROW					35	
W6-3-48	48"x48"	TWO WAY TRAFFIC					35	
W8-1-48	48"x48"	BUMP					35	
W8-3-48	48"x48"	PAVEMENT ENDS					35	
W8-7-48	48"x48"	LOOSE GRAVEL					35	
W8-11-48	48"x48"	UNEVEN LANES					35	
W8-12-48	48"x48"	NO CENTER LINE					35	
W8-17-48	48"x48"	SHOULDER DROP-OFF SYMBOL					35	
W8-53-48	48"x48"	TRUCKS ENTERING HIGHWAY					35	
W8-54-48	48"x48"	TRUCKS ENTERING AHEAD or ___ FT or ___ MILE					35	
W8-55-48	48"x48"	TRUCKS CROSSING AHEAD or ___ FT or ___ MILE					35	
W8-56-48	48"x48"	TRUCKS EXITING HIGHWAY					35	
W9-3a-48	48"x48"	CENTER LANE CLOSED SYMBOL					35	
W13-1P-30	30"x30"	___ MPH ADVISORY SPEED PLAQUE (Mounted on warning sign post)					14	
W14-3-64	64"x48"	NO PASSING ZONE					28	
W16-2P-30	30"x24"	___ FEET PLAQUE (Mounted on warning sign post)					10	
W20-1-48	48"x48"	ROAD WORK AHEAD or ___ FT or ___ MILE	10	10	8	10	35	350
W20-2-48	48"x48"	DETOUR AHEAD or ___ FT or ___ MILE					35	
W20-3-48	48"x48"	ROAD or STREET CLOSED AHEAD or ___ FT or ___ MILE					35	
W20-4-48	48"x48"	ONE LANE ROAD AHEAD or ___ FT or ___ MILE	4	4	4	4	35	140
W20-5-48	48"x48"	RIGHT or CENTER or LEFT LANE CLOSED AHEAD or ___ FT or ___ MILE					35	
W20-7-48	48"x48"	FLAGGER	2	2		2	35	70
W20-8-18	18"x18"	STOP - SLOW PADDLE Back to Back	2	2		2	5	10
W20-52P-54	54"x12"	NEXT ___ MILES (Mounted on warning sign post)					12	
W21-1-48	48"x48"	WORKERS					35	
W21-2-48	48"x48"	FRESH OIL					35	
W21-3-48	48"x48"	ROAD MACHINERY AHEAD or ___ FT or ___ MILE					35	
W21-5-48	48"x48"	SHOULDER WORK					35	
W21-5a-48	48"x48"	RIGHT or LEFT SHOULDER CLOSED	4	4	4	4	35	140
W21-5b-48	48"x48"	RIGHT or LEFT SHOULDER CLOSED AHEAD or ___ FT or ___ MILE	4	4	4	4	35	140

SIGN NUMBER	SIGN SIZE	DESCRIPTION	AMOUNT REQUIRED			TOTAL AMOUNT REQUIRED	UNITS PER AMOUNT	UNITS SUB TOTAL
			BY PHASE NO.					
			1	2	All			
W21-6-48	48"x48"	SURVEY CREW					35	
W21-50-48	48"x48"	BRIDGE PAINTING AHEAD or ___ FT					35	
W21-51-48	48"x48"	MATERIAL ON ROADWAY					35	
W21-52-48	48"x48"	PAVEMENT BREAKS					35	
W21-53-48	48"x48"	RUMBLE STRIPS AHEAD					35	
W22-8-48	48"x48"	FRESH OIL LOOSE ROCK					35	
W24-1-48	48"x48"	DOUBLE REVERSE CURVE					35	

SPECIAL SIGNS

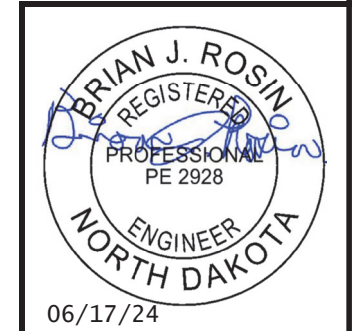
CONSIGN	DESCRIPTION	1	2	All	TOTAL AMOUNT	UNITS PER AMOUNT	UNITS SUB TOTAL
ConSign 1	156"x72" EXIT 64 NORTHBOUND 13 FT LANE WIDE VEHICLES USE ALTERNATE ROUTE	1			1	118	118
ConSign 2	158"x72" EXIT 64 SOUTHBOUND 13 FT LANE WIDE VEHICLES USE ALTERNATE ROUTE	1			1	119	119
ConSign 3	150"x72" 13 FT LANE ON BRIDGE WIDE VEHICLES USE ALTERNATE ROUTE	2			2	115	230

SPEC & CODE

704-1000	TRAFFIC CONTROL SIGNS	TOTAL UNITS	2895
----------	-----------------------	-------------	------

SPEC & CODE	DESCRIPTION	UNIT	QUANTITY			TOTAL QUANTITY
			BY PHASE NO.			
			1	2	All	
704-0100	FLAGGING	MHR	50	50		100
704-1018	LANE CLOSURE-SIGNAL CONTROL/FLAGGING CONTROL	EACH	1	1	1	1
704-1039	ATTENUATION DEVICE-TYPE B-45	EACH				
704-1048	PORTABLE RUMBLE STRIPS	EACH				
704-1050	TYPE I BARRICADES	EACH				
704-1052	TYPE III BARRICADES	EACH	2	2	2	2
704-1060	DELINEATOR DRUMS	EACH	49	49	49	49
704-1065	TRAFFIC CONES	EACH				
704-1067	TUBULAR MARKERS	EACH				
704-1070	DELINEATOR	EACH				
704-1072	FLEXIBLE DELINEATORS	EACH				
704-1080	STACKABLE VERTICAL PANELS	EACH				
704-1081	VERTICAL PANELS - BACK TO BACK	EACH				
704-1085	SEQUENCING ARROW PANEL - TYPE A	EACH				
704-1086	SEQUENCING ARROW PANEL - TYPE B	EACH				
704-1087	SEQUENCING ARROW PANEL - TYPE C	EACH				
704-1500	OBLITERATION OF PVMT MK	SF	1200			1200
704-3501	PORTABLE PRECAST CONCRETE MED BARRIER	LF				
704-3510	PRECAST CONCRETE MED BARRIER - STATE FURNISHED	EACH				
704-3511	STATE FURNISHED MEDIAN BARRIER	LF				
762-0200	RAISED PAVEMENT MARKERS	EACH				
762-0420	SHORT TERM 4IN LINE - TYPE R	LF	1430	1430		2860
762-0426	SHORT TERM 24IN LINE-TYPE R	LF			48	48
762-0430	SHORT TERM 4IN LINE - TYPE NR	LF				

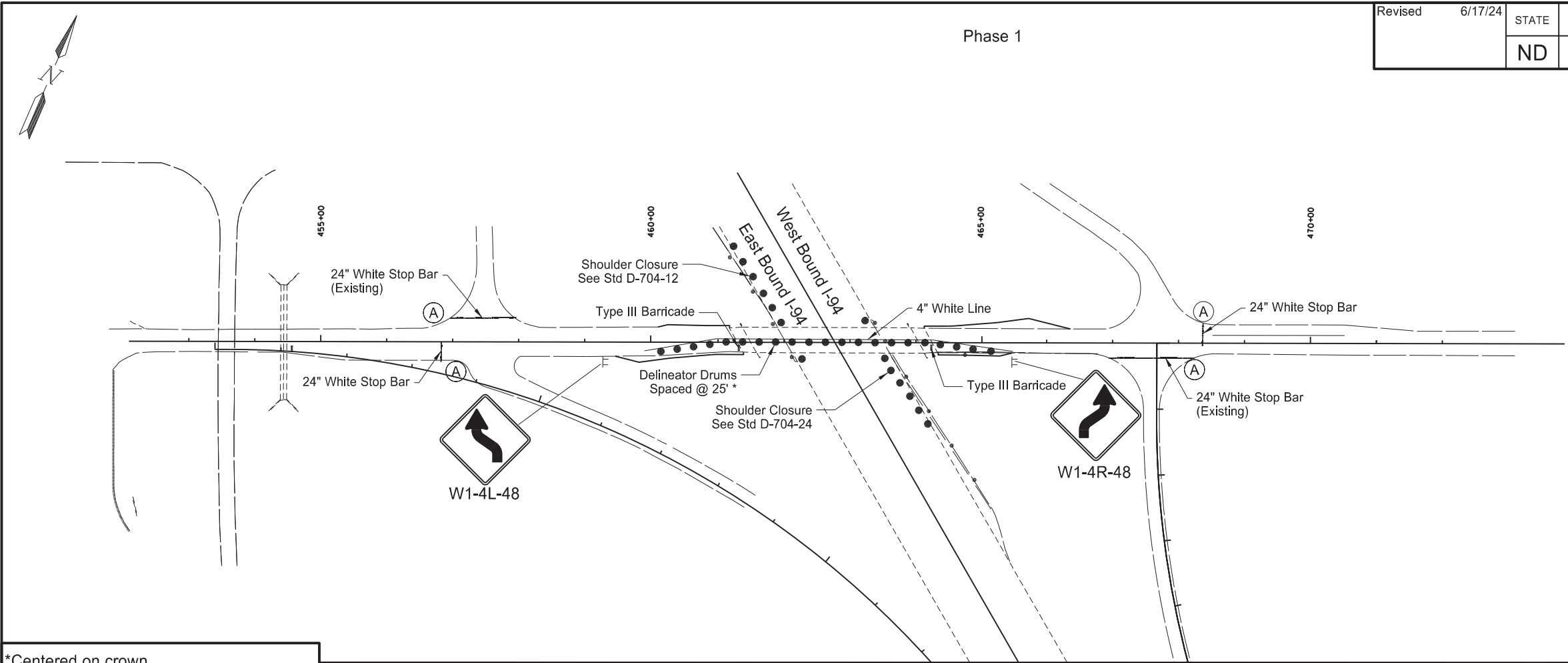
NOTE:
If additional signs are required, units will be calculated using the formula from Section III-18.06 of the Design Manual.
<http://www.dot.nd.gov/>



Traffic Control Devices List
Pedestal Repair Work
Exit 64 Interchange Bridge

Revised	6/17/24	STATE	PROJECT NO.	SECTION NO.	SHEET NO.
		ND	IM-5-094(171)064	100	3

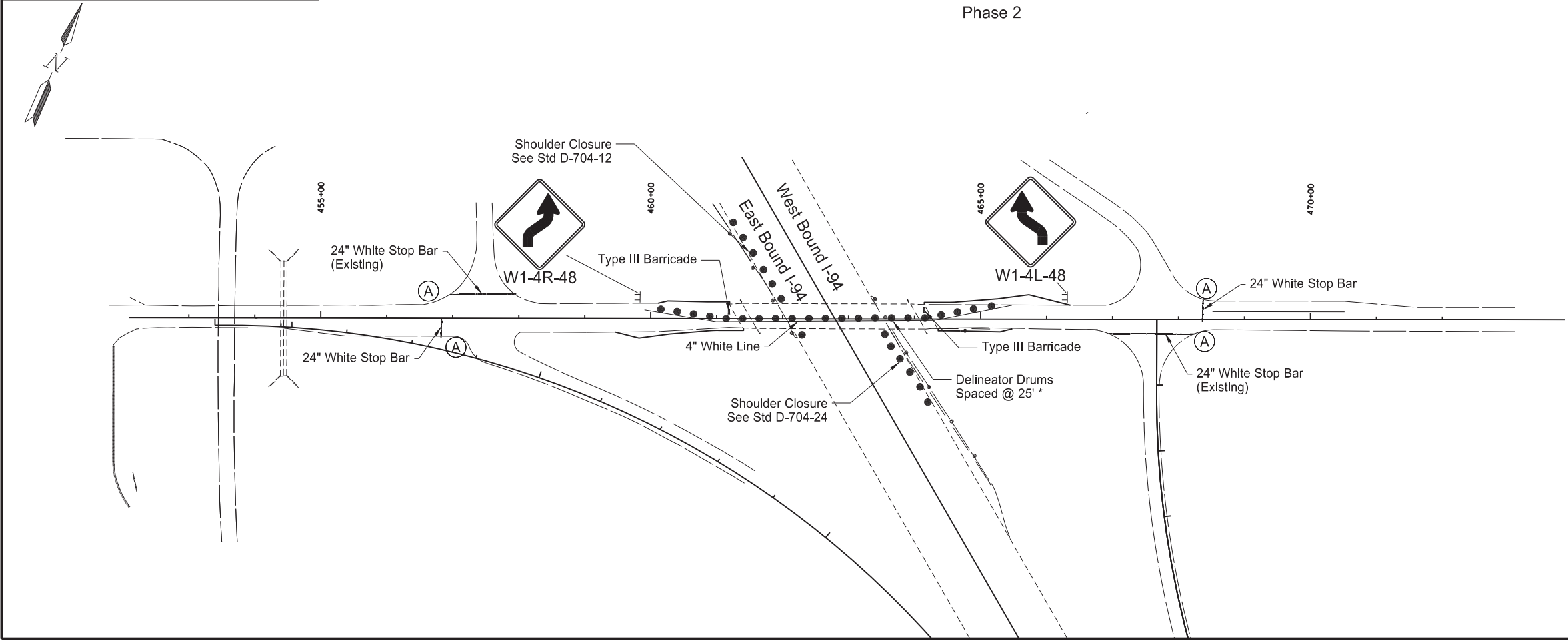
Phase 1



*Centered on crown

A Provide portable traffic control signal with cameras and a video detection system

Phase 2

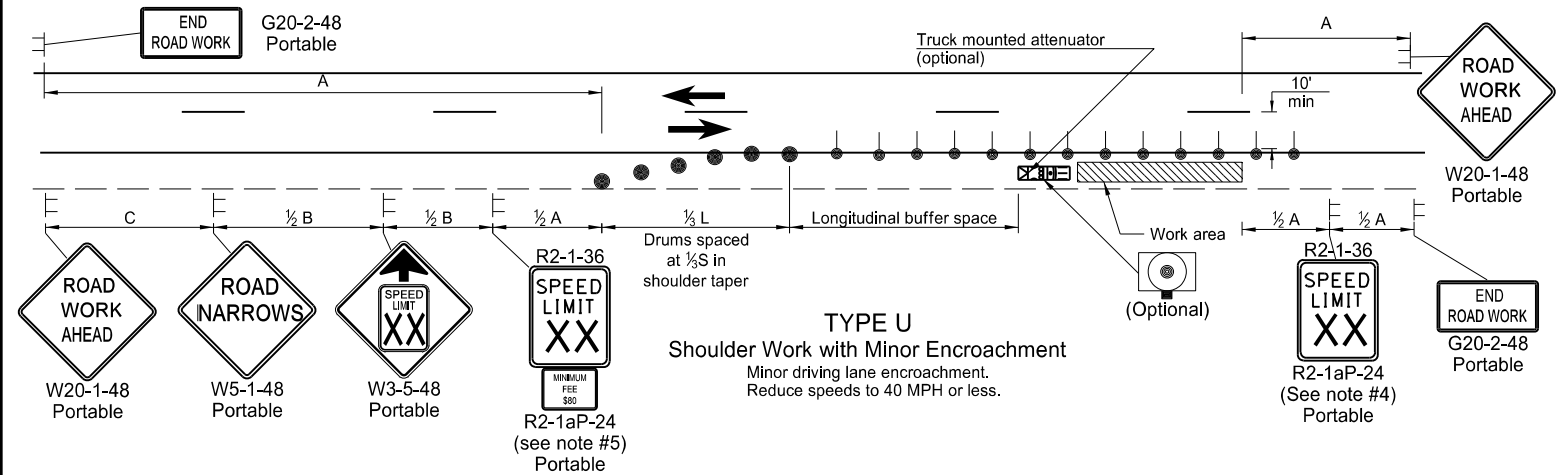
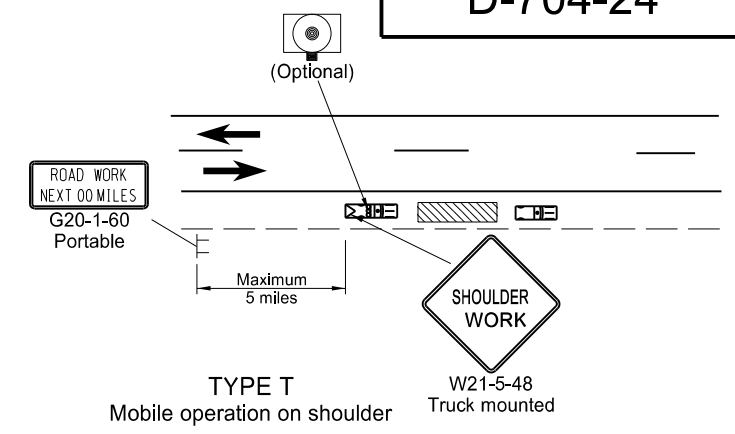
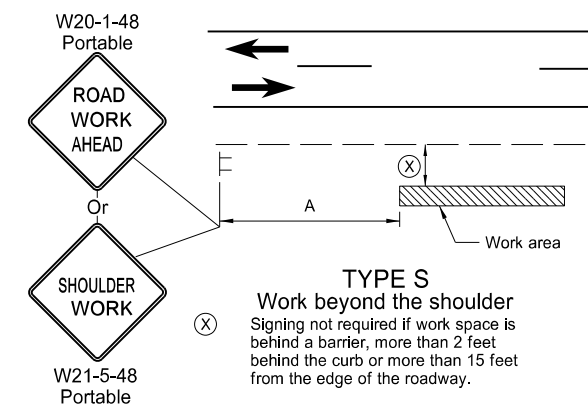
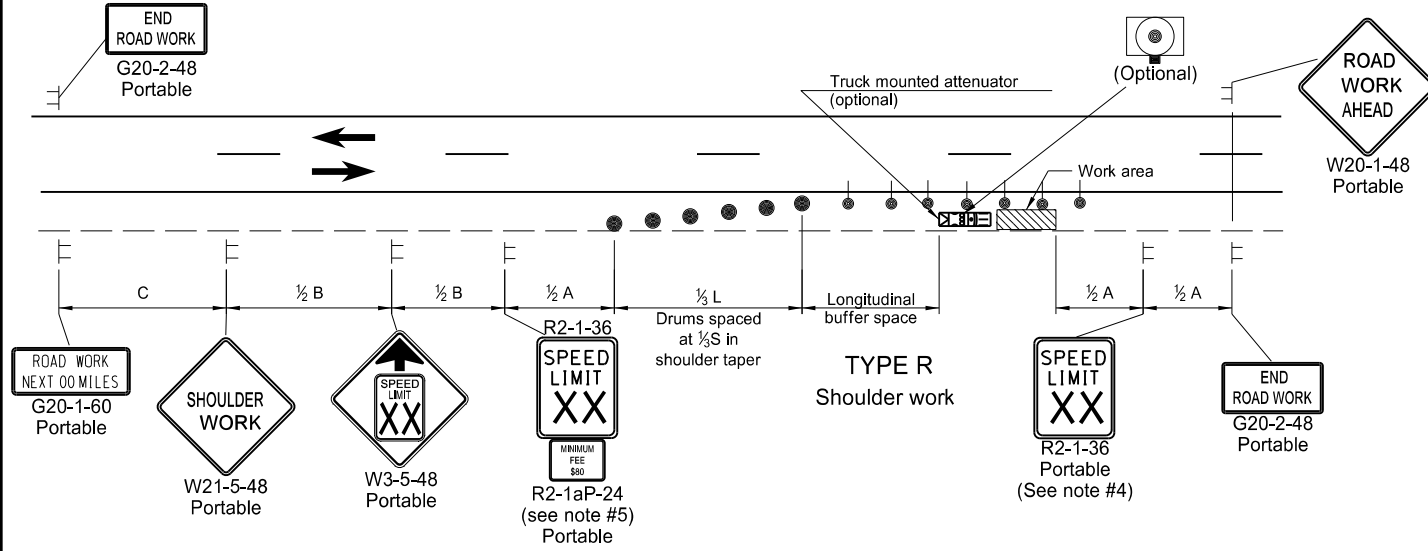


BRIAN J. ROSIN
REGISTERED
PROFESSIONAL
PE 2928
ENGINEER
NORTH DAKOTA
06/17/24

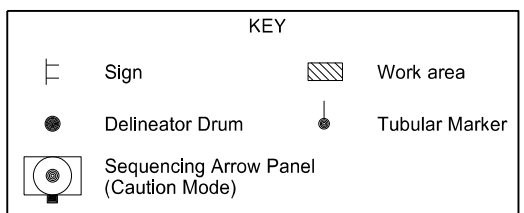
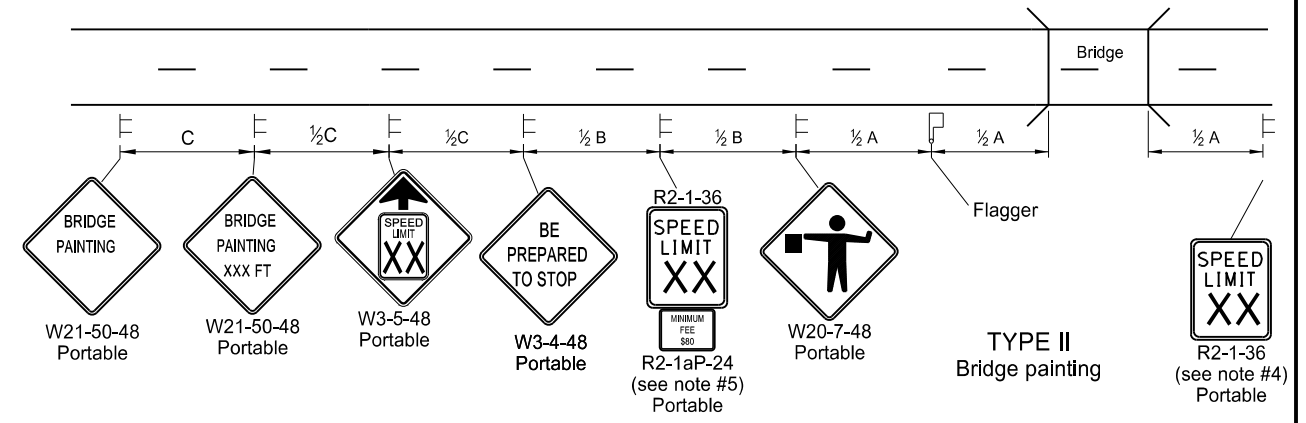
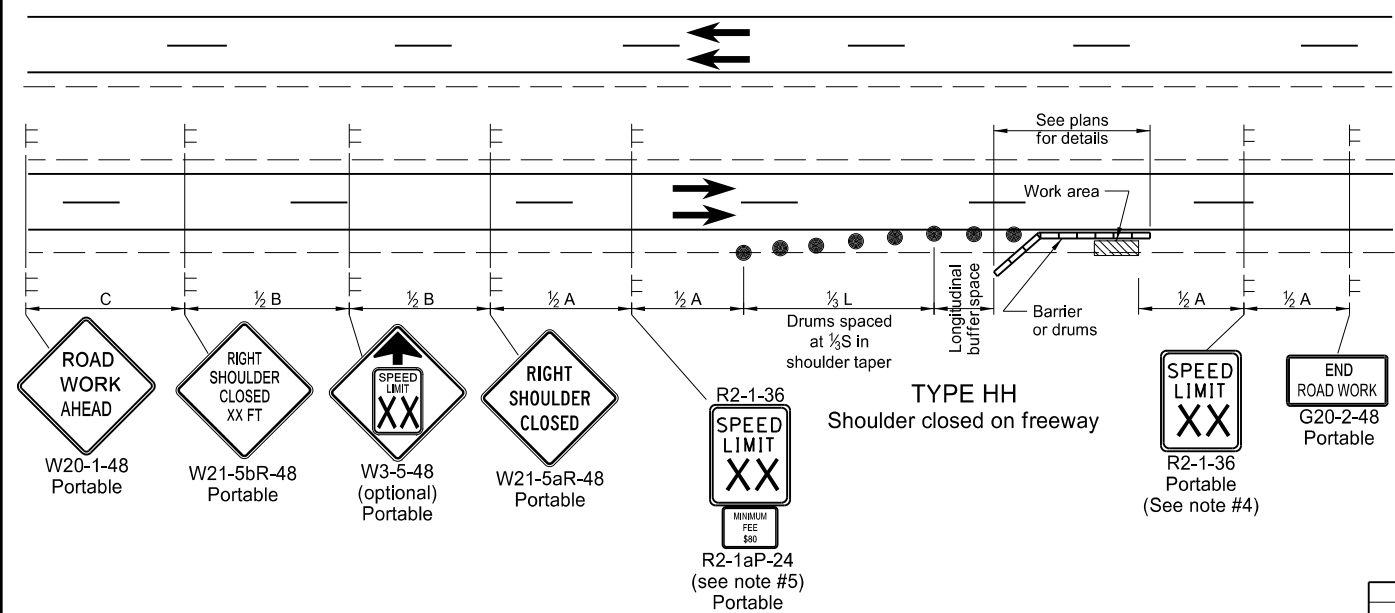
Traffic Control Layout - Phasing
Phase 1 - Repair Work Pedestals 4 and 5
Phase 2 - Repair Work Pedestals 1, 2, and 3

Pedestal Repair Work
I-94 Exit 64 Interchange Bridge

SHOULDER CLOSURES AND BRIDGE PAINTING LAYOUTS



- Notes
- Variables
 - S = Numerical value of speed limit or 85th percentile.
 - W = The width of the taper in feet.
 - L = Minimum length of taper, $S \times W$ for freeways, expressways, and all other roads with speeds of 45 mph or greater, or $W \times S^2 / 60$ for urban, residential, and other streets with speeds of 40 mph or less.
 - Space delineator drums for tapering traffic at dimension "S". Space delineator drums or tubular markers for tangents at 2 times "S".
 - Sequencing Arrow Panels
 - Use Type A on roadways with slow moving traffic speeds and low volume (25 mph or less and 750 ADT or less).
 - Use Type B on roadways with moderate traffic speeds and volumes (40 mph or less and 5000 ADT or less).
 - Use Type C on roadways with high traffic speeds and volumes (over 40 mph or over 5000 ADT).
 - Re-establish speed limit. Determine exact speed limit in the field, dependent on location and conditions.
 - Determine the reduced speed limit based on the in-place speed limit before construction. Where speed reductions exceed 30 MPH, install a second speed limit sign with the desired speed reduction (not to exceed 30 mph.) Place the second speed limit sign at 1/2 B.
 - Install flags on warning signs in urban areas when signs are not portable. Mount 24 inch square flags perpendicular to the edges of the sign, and at such a distance above the edge that the flag does not touch the sign when limp.
 - Cover existing speed limit signs within a reduced speed zone.
 - As an option, use portable sign supports in lieu of post mounted signs in accordance with NDDOT Standard Drawing D-704-14.
 - Recommend 40 mph speed limit in vicinity of workers, unless location and conditions dictate otherwise.



ADVANCE WARNING SIGN SPACING			
Road Type	Distance Between Signs Min. (ft)		
	A	B	C
Urban - Low Speed (30 mph or less)	150	150	150
Urban - Low Speed (over 30 to 40 mph)	280	280	280
Urban - High Speed (over 40 mph to 50 mph)	360	360	360
Rural - High Speed (over 50 mph to 65 mph)	720	720	720
Urban Expressway and Freeway (55 mph to 60 mph)	850	1350	2200
Rural Expressway and Freeway (70 mph to 75 mph)	1000	1500	2640
Interstate/4-Lane Divided (Maintenance and Surveying)	750	1000	1500

Longitudinal Buffer Space	
Speed (mph)	Length Min (feet)
20	115
25	155
30	200
35	250
40	305
45	360
50	425
55	495
60	570
65	645
70	730
75	820

NORTH DAKOTA DEPARTMENT OF TRANSPORTATION	
9-27-13	
REVISIONS	
DATE	CHANGE
8-17-17 11-01-19	Updated notes & revised signs Revised drum spacing & signs nos.

This document was originally issued and sealed by Kirk J Hoff, Registration Number PE-4683, on 11/1/19 and the original document is stored at the North Dakota Department of Transportation