

Traffic Signals



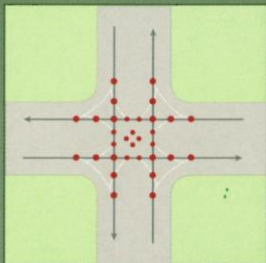
- Public is familiar with red, yellow, green
- Can handle large volumes in traffic (typical in urban areas)
- Clear message for pedestrians of when they can cross
- Emergency vehicles can communicate with signals to give them a green

Roundabouts

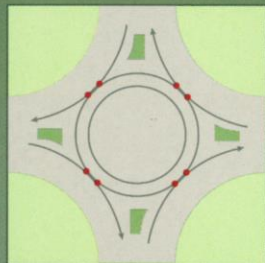


- Safer than signals (see figures below)
- Slower speeds are generally safer for pedestrians
- Fewer vehicles come to complete stop (less idle time than a signal)
- No signal equipment to maintain
- Can continue to operate in a power outage
- Functional and aesthetically pleasing

With roundabouts, head-on and high-speed right angle collisions are virtually eliminated.



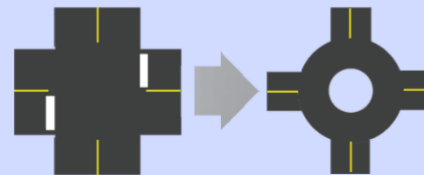
[Traditional intersection]



[Roundabout]

● Potential vehicle conflict point

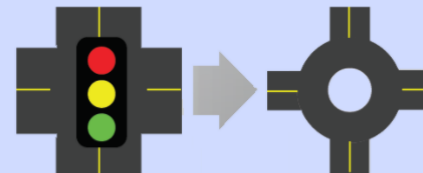
Two-Way Stop-Controlled Intersection to a Roundabout



82%

Reduction in severe crashes

Signalized Intersection to a Roundabout



78%

Reduction in severe crashes

Source: *Highway Safety Manual*